

Wood-Mizer®

Parts Manual

MS300 E3S
MS300 E2S

rev. A1.04
rev. A1.04



Safety is our #1 concern! Read and understand all safety information and instructions before operating, setting up or maintaining this machine.

Form #2501

Table of Contents

Section-Page

SECTION 1	GENERAL INFORMATION	1-1
1.1	How To Use the Parts List.....	1-1
1.2	Sample Assembly	1-1
SECTION 2	MS300 TABLE SAW	2-1
2.1	Mechanical Assembly	2-1
2.2	MS300 Mechanical Assembly	2-3
2.3	Decals	2-5
2.4	Motor Kit	2-7
2.5	Handle Assembly (No. 542521)	2-8
2.6	Cutting Unit Assembly (No. 544171)	2-9
2.7	Spindle Housing Assembly (No. 544061)	2-11
2.8	Motor Base Assembly (No. 544067)	2-12
2.9	Lower Body Assembly (No. 544059)	2-13
2.10	Horizontal Drive Shaft Assembly (No. 544177)	2-14
2.11	Up/Down Screw Assembly (No. 544180)	2-15
2.12	Riving Knife Assembly (No. 544053)	2-16
2.13	Sawdust Chute Assembly (No. 544077)	2-17
2.14	Scale Guide Bar Assembly (No. 544081)	2-18
2.15	Board Guide Fence w/Bracket (No. 544091)	2-19
2.16	Upper Guard Assembly (No. 544125)	2-20
2.17	Bottom Bracket Assembly (No. 544107)	2-21
2.18	Telescopic Arm Assembly (No. 544113)	2-22
2.19	Upper Arm Assembly (No. 544120)	2-23
2.20	Lower Arm Assembly (No. 544118)	2-24
2.21	Extension Shelf Assembly (No. 544057)	2-25
2.22	Blade Tilt Drive Screw (No. 544046)	2-26
2.23	Angle Cutting Guide Assembly (No. 544156)	2-27
2.24	Mounting Assembly (No. 544154)	2-28
2.25	Side Clamp (No. 544350)	2-29
2.26	Work Table (No. 544270)	2-30
2.27	Main Profile (No. 544271)	2-31
2.28	Lower Profile (No. 544282)	2-32
2.29	Bearing Ball Strip (No. 544283)	2-33
2.30	Main Profile Side Handle (No. 544269)	2-34
2.31	Main Profile Side Handle (No. 544285)	2-35
2.32	Side Shelf (No. 544267)	2-36
2.33	MS300EA3S Electrical Box (Part No. 536932-6)	2-37
2.34	Extraction Hose Assembly (No. 544186)	2-38
2.35	Hold-Down Assembly (No. 542460)	2-39
2.36	Hold-Down Arm (No. 544367)	2-40
2.37	Table Extension (No. 541506)	2-41

SECTION 1 GENERAL INFORMATION

1.1 How To Use the Parts List

- Use the index above to locate the assembly that contains the part you need.
- Go to the appropriate section and locate the part in the illustration.
- Use the number pointing to the part to locate the correct part number and description in the table.
- Parts shown indented under another part are included with that part.
- Parts marked with a diamond (◆) are only available in the assembly listed above the part.

See the sample table below. Sample Part #A01111 includes part F02222-2 and subassembly A03333. Subassembly A03333 includes part S04444-4 and subassembly K05555. The diamond (◆) indicates that S04444-4 is not available except in subassembly A03333. Subassembly K05555 includes parts M06666 and F07777-77. The diamond (◆) indicates M06666 is not available except in subassembly K05555.

1.2 Sample Assembly				
REF.	DESCRIPTION (◆ Indicates Parts Available In Assemblies Only)	PART #	QTY	
	Sample Assembly, Complete (Includes All Indented Parts Below)	A01111	1	
1	Sample Part	F02222-22	1	
	Sample Subassembly (Includes All Indented Parts Below)	A03333	1	
2	Sample Part (◆ Indicates Part Is Only Available With A03333)	S04444-4	1	◆
	Sample Subassembly (Includes All Indented Parts Below)	K05555	1	
3	Sample Part (◆ Indicates Part Is Only Available With K05555)	M06666	2	◆
4	Sample Part	F07777-77	1	

To Order Parts:

- From Europe call our European Headquarters and Manufacturing Facility in Kolo, Poland at **+48-63-2626000**. From the continental U.S., call our toll-free Parts hotline at **1-800-525-8100**. Have your customer number, vehicle identification number, and part numbers ready when you call. From other international locations, contact the Wood-Mizer distributor in your area for parts.

Office Hours:

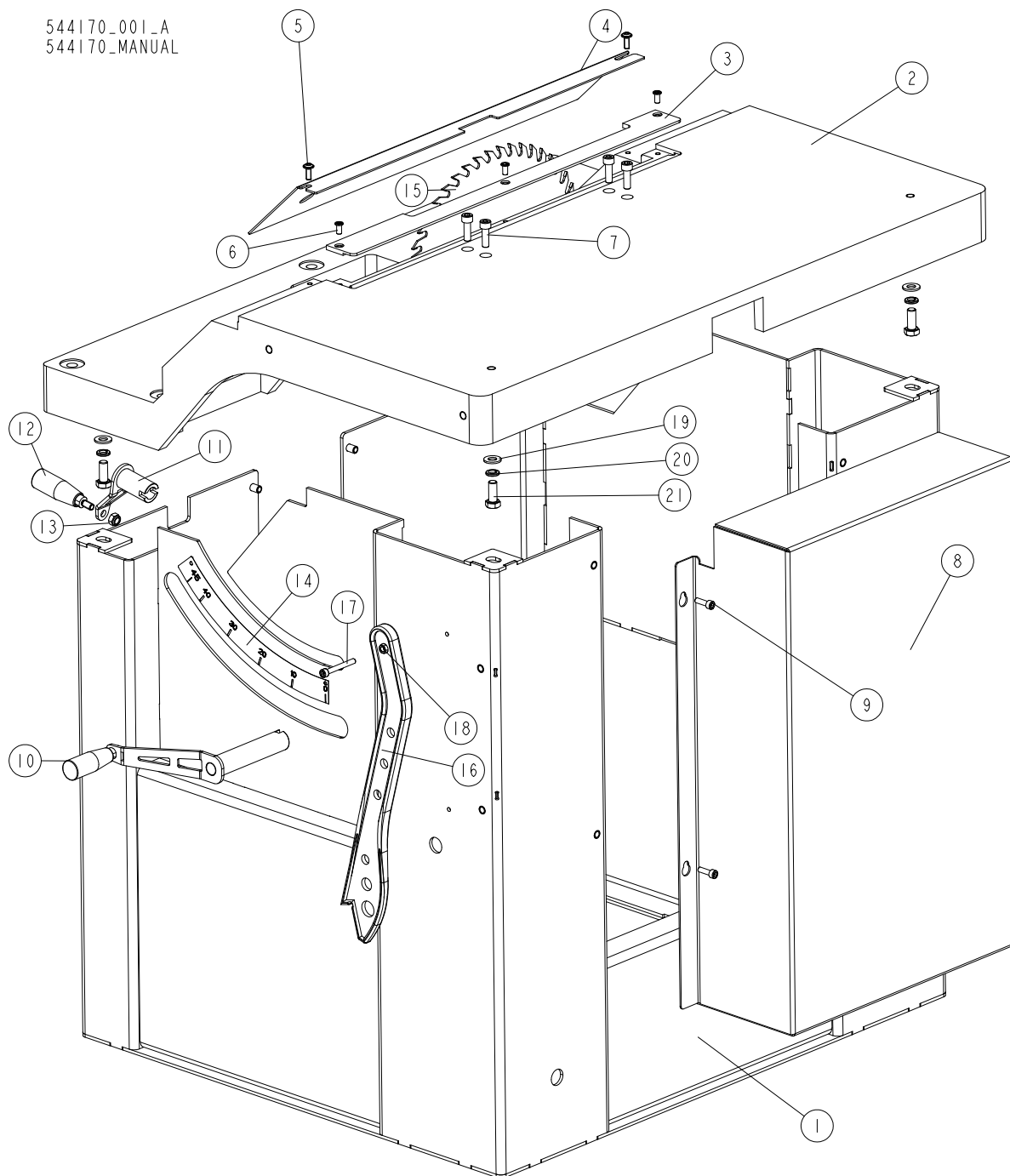
Country	Monday - Friday	Saturday	Sunday
Poland	7-15	Closed	Closed
US	8 a.m.- 5 p.m.	8 a.m.- 12 p.m.	Closed



CAUTION! It is strongly recommended that only original spare parts be used.

SECTION 2 MS300 TABLE SAW

2.1 Mechanical Assembly



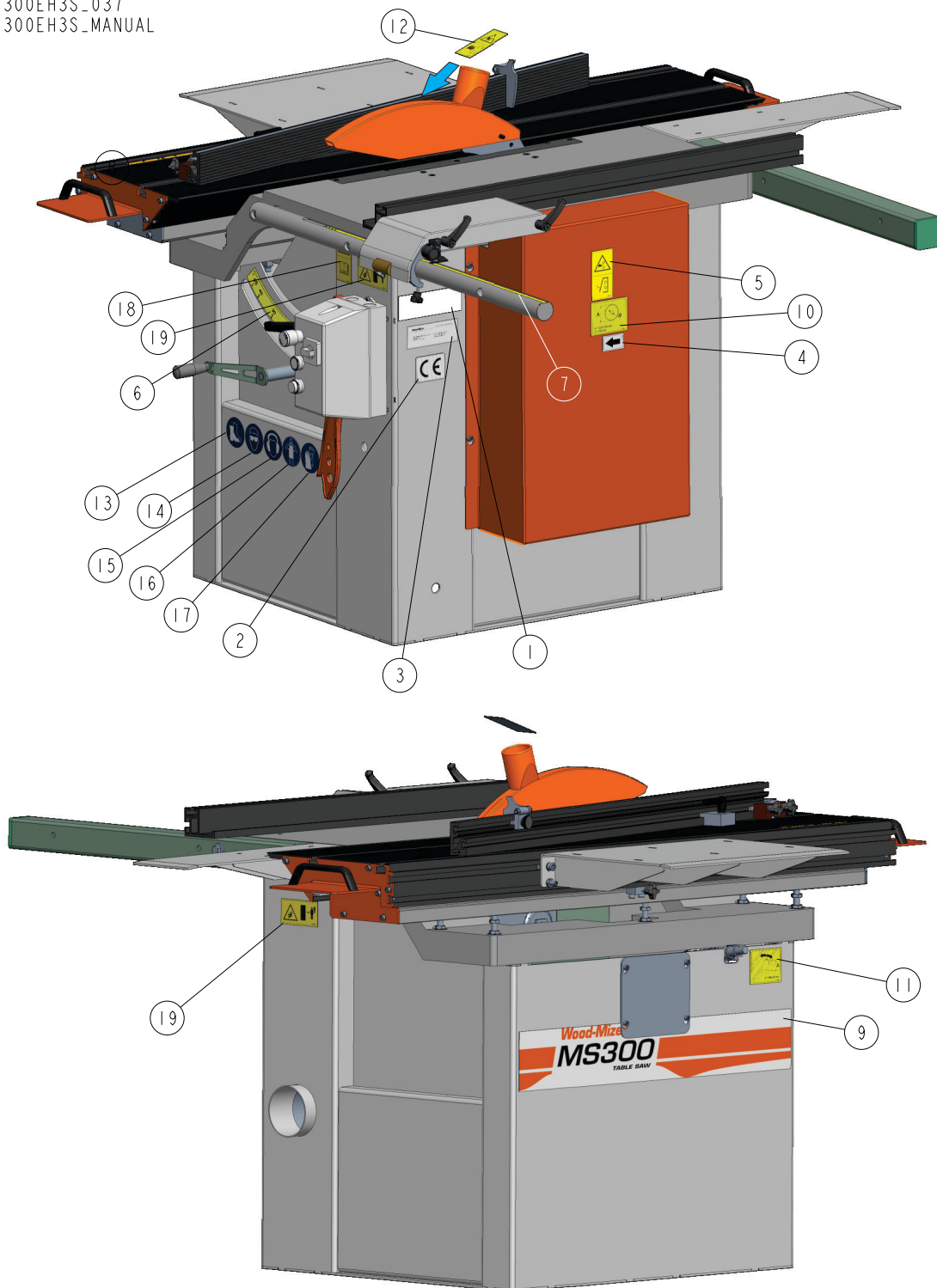
REF.	DESCRIPTION (◆ indicates parts available in assemblies only)	PART #	QTY
-	MS300 MECHANICAL ASSEMBLY	544170	1
1	CHASSIS, WELDED AND PAINTED	544015-1	1
2	TABLE	544020-1	1
3	PLATE, TABLE	546427-1	1
4	PLATE, TABLE COVER	544078-1	1

REF.	DESCRIPTION (◆ indicates parts available in assemblies only)	PART #	QTY	
5	BOLT, M6X16 BN 11252 "BOSSARD"	F81001-24	2	
6	SCREW M6X16 SHCS ZC 10.9 BN 1206	F81001-105	2	
7	SCREW, M8X25-10.9-FE/ZN5 DIN 912 HEX SOCKET HEAD CAP	F81002-128	4	
8	DRIVE GUARD	544176-1	1	
9	SCREW, M6 X 20 8.8 HEX SOCKET HEAD CAP	F81001-22	4	
10	HANDLE, COMPLETE See Section 2.5	542521	1	
-	HANDLE ASSEMBLY	536955	1	
11	HANDLE WELDMENT	536953-1	1	
12	CYLINDRICAL GRIP	533505	1	
13	NUT, M8-8-B HEX NYLON ZINC LOCK	F81032-2	1	
14	STICKER, ANGLE SCALE	544157	1	
15	BLADE, 315X3,2/2.2X30+PH2 Z=48ECO-SIL	544158	1	
16	PUSHER	544293	1	
17	SCREW M6X60 SHCS 8.8; DIN 912 ISO 4762	F81001-83	1	
18	NUT, M6-8 HEX ZINC	F81031-1	1	
19	WASHER, 10.5 FLAT ZINC	F81055-1	4	
20	WASHER, 10.2 SPLIT LOCK ZINC	F81055-2	4	
21	BOLT, M10X25-8.8 HEX HEAD FULL THREAD ZINC	F81003-11	4	

REF.	DESCRIPTION (◆ indicates parts available in assemblies only)	PART #	QTY	
14	NUT, SPECIAL	544132-1	5	
15	BLADE TILT SCREW ASSEMBLY See Section 2.18	544046	1	
16	WORK TABLE See Section 2.22	544270	1	
17	ANGLE CUTTING GUIDE ASSEMBLY See Section 2.19	544156	1	
18	EXTRACTION HOSE ASSEMBLY See Section 2.30	544186	1	
19	INDICATOR, ANGLE SCALE	546455	1	
20	WASHER, 5.1 SPLIT LOCK	F81052-2	2	
21	SCREW, M5X10 DIN 912 A2-70 HEX SOCKET HEAD STAINLESS STEEL CAP	F81000-23	2	
22	PLATE, INSPECTION HOLE CAP	546431-1	1	
23	SCREW, M6X20 8.8 HEX SOCKET HEAD CAP ZINC	F81001-22	4	

2.3 Decals

MS300EH3S_037
MS300EH3S_MANUAL

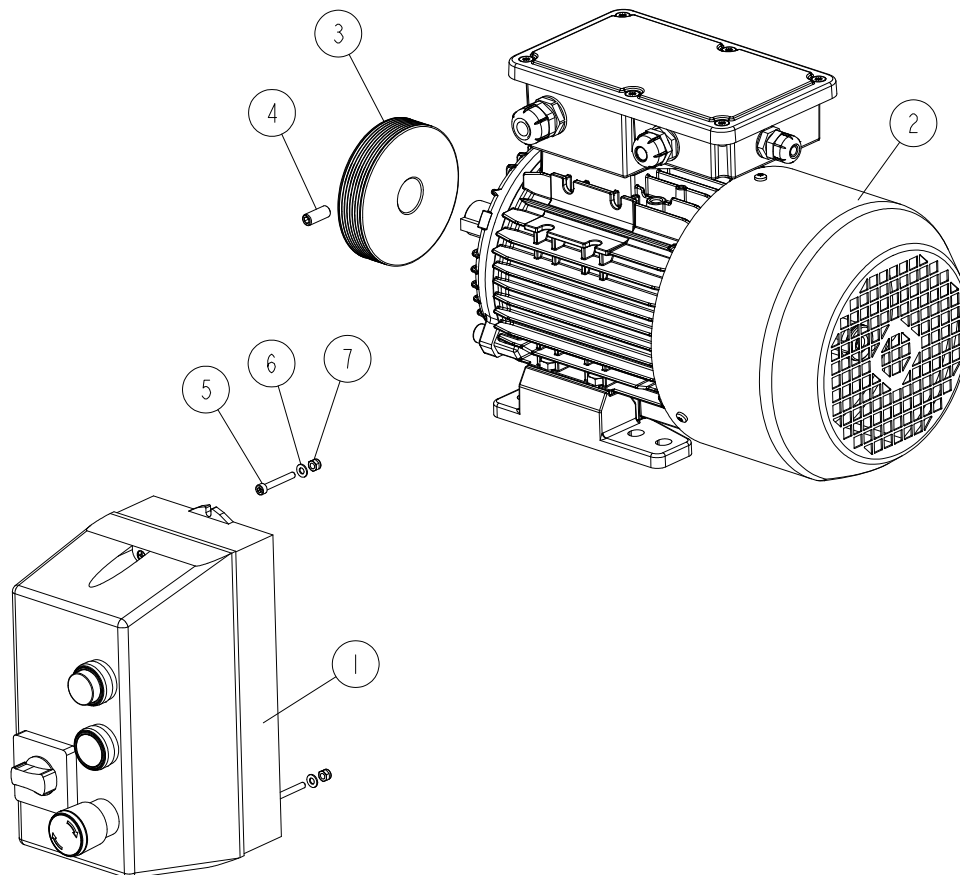


REF.	DESCRIPTION (◆ indicates parts available in assemblies only)	PART #	QTY
-	MS300 DECAL KIT	550401	1
1	DECAL, VIN	VIN	1
2	DECAL, CE CERTIFIED SAWMILL (SMALL)	P85070	1
3	DECAL, EUROPEAN HEADQUARTERS ADDRESS	015841	1

REF.	DESCRIPTION (◆ indicates parts available in assemblies only)	PART #	QTY	
4	DECAL, MOTOR REVOLUTIONS DIRECTION	S20097	1	
5	DECAL, "CLOSE GUARDS AND COVERS BEFORE OPERATING"	099220	1	
6	DECAL, ANGLE SCALE	544157	1	
7	DECAL, METRIC SCALE	544080	1	
8	DECAL, MEASURE	544274	1	
9	DECAL, MS300 MACHINE TYPE	550402	1	
10	DECAL, MS300 CUTTING TOOLS SPECIFICATIONS	550403	1	
11	DECAL, MS300 BLADE TILT	550404	1	
12	DECAL, HAND INJURY HAZARD (PICTOGRAM)	509255	1	
13	DECAL, "USE PROTECTIVE FOOTWEAR" - SMALL (PICTOGRAM)	501465-1	1	
14	DECAL, EYE PROTECTION WARNING - 60 MM (PICTOGRAM)	S12004G-1	1	
15	DECAL, "WEAR PROTECTIVE EAR MUFFS" - SMALL (PICTOGRAM)	S12005G-1	1	
16	DECAL, "WEAR PROTECTIVE APRON" - SMALL (60 MM)	539211-1	1	
17	DECAL, "WEAR SAFETY GLOVES" - SMALL	512107-1	1	
18	DECAL, "READ THE OPERATOR'S MANUAL" (PICTOGRAM)	096317	1	
19	DECAL, "KEEP A SAFE DISTANCE" (PICTOGRAM)	099221H	2	

2.4 Motor Kit

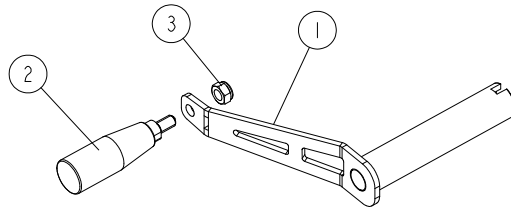
544190_001_A
544190_MANUAL



REF.	DESCRIPTION (◆ indicates parts available in assemblies only)	PART #	QTY
-	MOTOR KIT	544190	1
1	STARTER, 10A MAX (3-4 KW PRZY 400V) IP6	536932	1
2	MOTOR, 3SIE90L-2A-HM 3KW IM1001	536948	1
3	PULLEY, MULTI-GROOVE ALUMINIUM	533585	1
4	SCREW, M8X20 HSS W/FLAT POINT ZC 45H DIN 913	F81002-103	1
5	SCREW, M4X30-8.8 FE/ZN5 DIN 912 HEX SOCKET HEAD CAP	F81000-85	2
6	WASHER, 4.3 FLAT ZINC	F81051-2	2
7	NUT, M4-B HEX NYLON ZINC LOCK	F81029-1	2

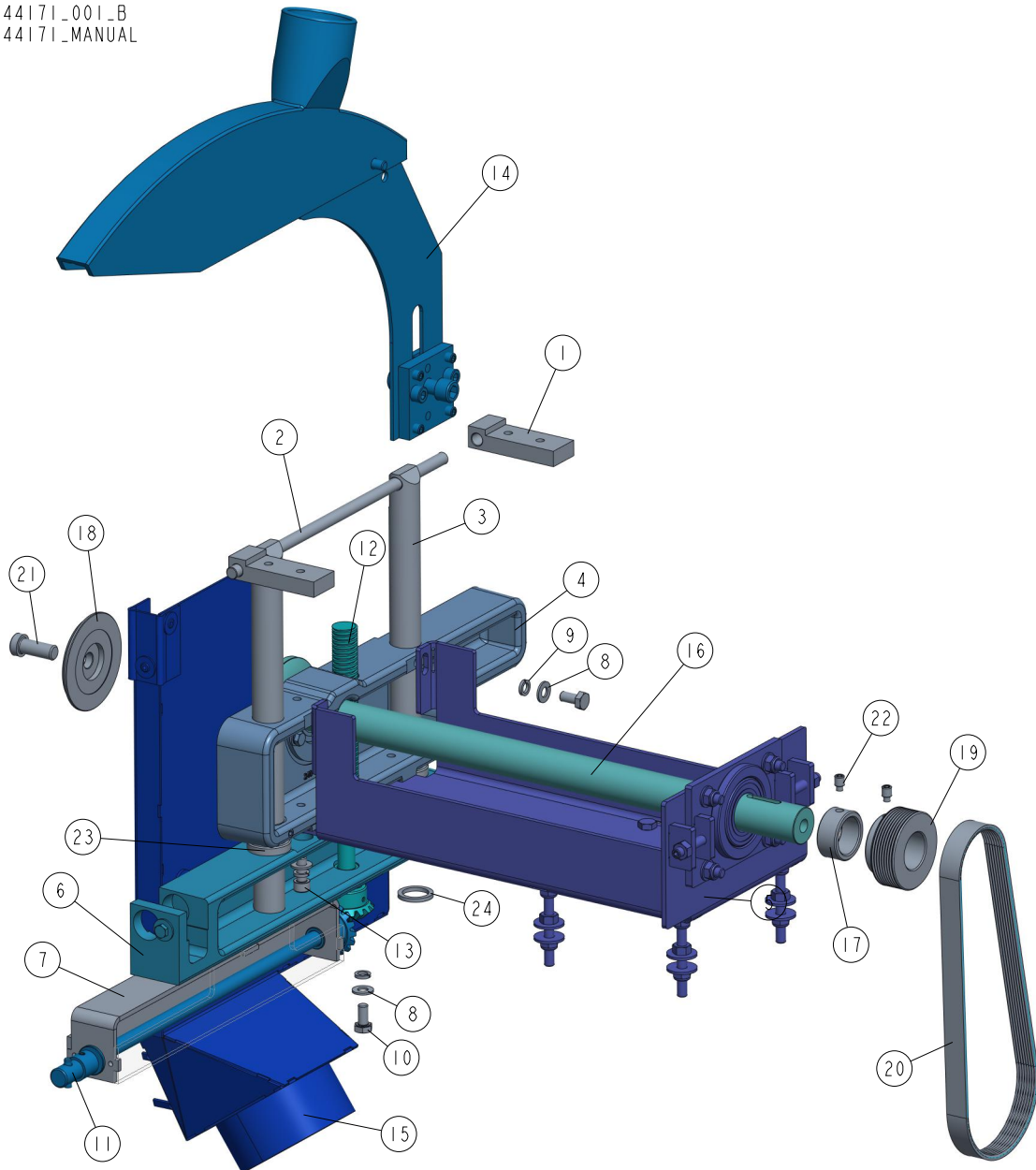
2.5 Handle Assembly (No. 542521)

542521_001
542521_MANUAL



REF.	DESCRIPTION (◆ indicates parts available in assemblies only)	PART #	QTY	
-	HANDLE, COMPLETE	542521	1	
1	HANDLE	542522-1	1	
2	GRIP, CYLINDRICAL	533505	1	
3	NUT, M8-8-B HEX NYLON ZINC LOCK	F81032-2	1	

2.6 Cutting Unit Assembly (No. 544171)

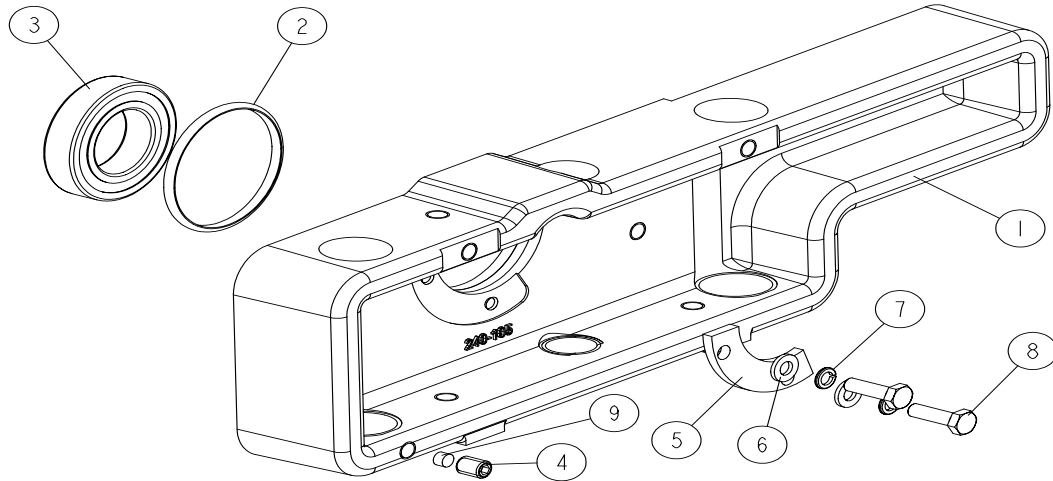
544171_001_B
544171_MANUAL

REF.	DESCRIPTION (◆ indicates parts available in assemblies only)	PART #	QTY
-	CUTTING UNIT ASSEMBLY	544171	1
1	MOUNTING BRACKET	544023	2
2	BAR	544024	1
3	GUIDE ROD	544026	2
4	SPINDLE HOUSING ASSEMBLY See Section 2.7	544061	1
5	ELECTRIC MOTOR BASE ASSEMBLY See Section 2.8	544067	1
6	LOWER BODY ASSEMBLY See Section 2.9	544059	1
7	BRACKET WELDMENT	544182-1	1
8	WASHER, 8.4 FLAT ZINC	F81054-1	6
9	WASHER, 8.2 SPLIT LOCK ZINC	F81054-4	6

REF.	DESCRIPTION (◆ indicates parts available in assemblies only)	PART #	QTY	
10	BOLT, M8X16 -8.8-B HEX HEAD FULL THREAD ZINC	F81002-20	4	
11	HORIZONTAL DRIVE SHAFT ASSEMBLY See Section 2.10	544177	1	
12	UP/DOWN SCREW ASSEMBLY See Section 2.11	544180	1	
13	SCREW, M8 X 20-8.8 HEX SOCKET HEAD CAP ZINC	F81002-30	2	
14	RIVING KNIFE ASSEMBLY See Section 2.12	544053	1	
15	SAWDUST CHUTE ASSEMBLY See Section 2.13	544077	1	
16	DRIVE SHAFT ASSEMBLY	546394	1	
17	RETAINING BUSHING RETAINING BUSHING (FOR ONE-PHASE OPTION)	544029 546391	1 1	
18	BLADE CLAMPING PLATE	544030	1	
19	PULLEY,MULTI-GROOVE SMALL ALUMINIUM	544135	1	
20	BELT, 660J/260J-715 MULTI-RIBBED	544136	1	
21	SCREW, M12X30-LH-8.8-FE/ZN5 DIN 6912 HEX SOCKET HEAD CAP	F81004-121	1	
22	SCREW M8X12 HSS W/DOG POINT ZC 45H DIN 9	F81002-122	2	
23	SPACER 25/35X8	546470	2	
24	SPACER 21/28-3	562550	1	

2.7 Spindle Housing Assembly (No. 544061)

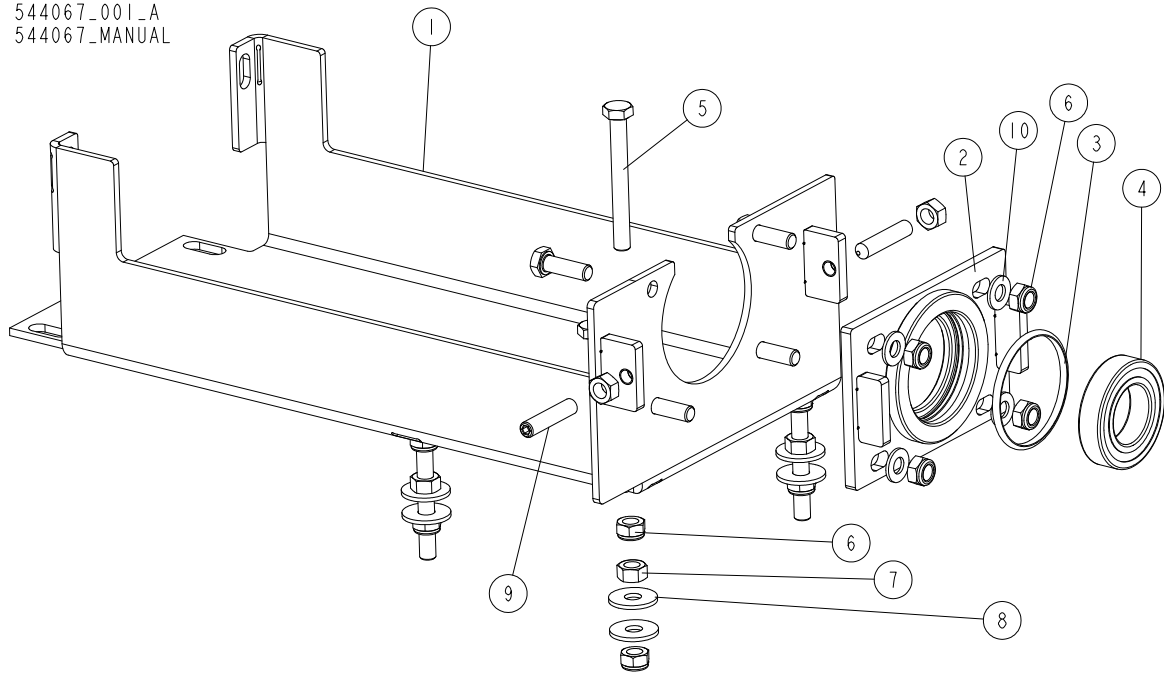
544061_001_B
544061_MANUAL



REF.	DESCRIPTION (◆ indicates parts available in assemblies only)	PART #	QTY	
-	SPINDLE HOUSING ASSEMBLY	544061	1	
1	SPINDLE HOUSING (CAST)	544060-1	1	
2	O-RING, OR 54X3.5	536959_1	1	
3	BEARING SKF 6006 2RS1/C3	544063	1	
4	SCREW M8X10 HSS W/DOG POINT ZC 45H DIN 9	F81002-123	1	
5	PLATE, BEARING SUPPORT	546433	1	
6	WASHER, 6.4 FLAT ZINC	F81053-1	2	
7	WASHER, Z 6.1 SPLIT LOCK ZINC	F81053-3	2	
8	BOLT, M6X20 8.8 HEX HEAD FULL THREAD ZINC	F81001-2	2	
9	PIN, SLIDE	535987	1	

2.8 Motor Base Assembly (No. 544067)

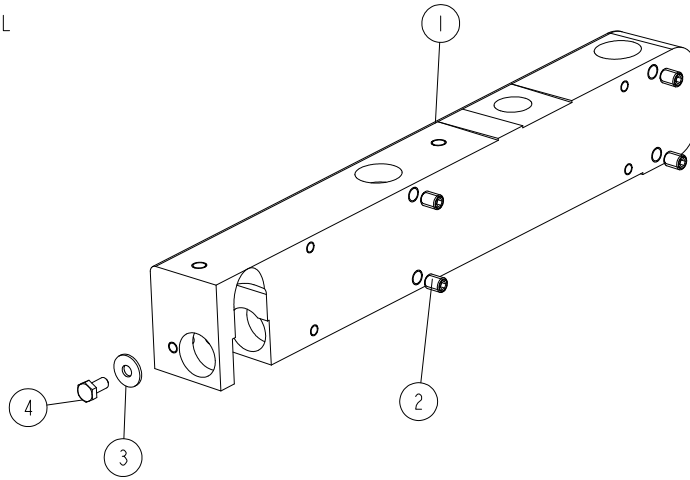
544067_001_A
544067_MANUAL



REF.	DESCRIPTION (◆ indicates parts available in assemblies only)	PART #	QTY
-	ELECTRIC MOTOR BASE ASSEMBLY	544067	1
1	MOTOR BASE WELDMENT	546393-1	1
2	ADJUSTABLE BEARING HOUSING	546456-1	1
3	ORING OR 54X3,5	536959_1	1
4	BEARING SKF 6006 2RS1/C3	544063	1
5	BOLT M8X70-8.8 FE/ZN5 DIN 933	F81002-130	4
6	NUT, M8-8-B HEX NYLON ZINC LOCK	F81032-2	12
7	NUT, M8-8-B HEX ZINC	F81032-1	6
8	WASHER, 8.5 SPECIAL FLAT ZINC	F81054-11	8
9	SCREW, M8X40-45H HEX SOCK.SET CONE POINT	F81002-52	2
10	WASHER, 8.4 FLAT ZINC	F81054-1	4

2.9 Lower Body Assembly (No. 544059)

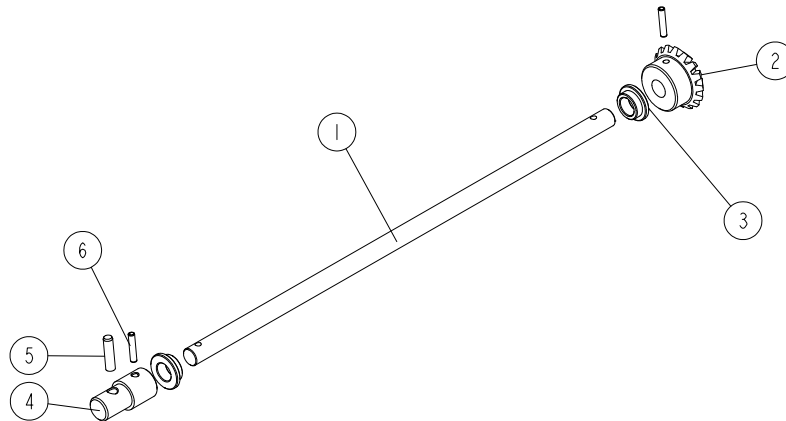
544059_001
544059_MANUAL



Ref	DESCRIPTION (◆ indicates parts available in assemblies only)	PART #	QTY
-	LOWER BODY ASSEMBLY	544059	1
1	LOWER BODY (CAST)	544058-1	1
2	SCREW M8X10 HSS W/DOG POINT ZC 45H DIN 913 ISO 4026	F81002-123	4
3	WASHER 6.5 ZC FENDER DIN 9021 ISO 7093	F81053-11	1
4	BOLT M6X12 HH ZC FT 8.8 DIN 933	F81001-7	1

2.10 Horizontal Drive Shaft Assembly (No. 544177)

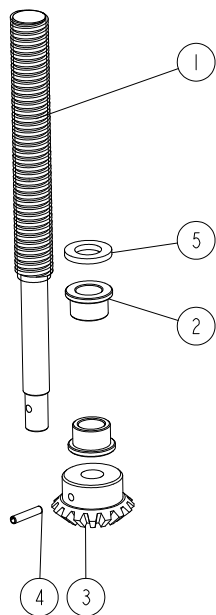
544177_001
544177_MANUAL



REF.	DESCRIPTION (◆ indicates parts available in assemblies only)	PART #	QTY
-	HORIZONTAL DRIVE SHAFT ASSEMBLY	544177	1
1	HORIZONTAL DRIVE SHAFT	544178	1
2	BEVEL GEAR M=2,5 T=16	544179	1
3	SELF-LUBRICATING BEARING, AMES N12/N18/N24-8	544031	2
4	PIN, SCALE DISK MOUNT	533595-1	1
5	PIN, 6X30 ROLL ZINC	F81045-7	1
6	ROLL PIN PN-EN ISO 8752-4X30-ST-A0P	F81044-11	2

2.11 Up/Down Screw Assembly (No. 544180)

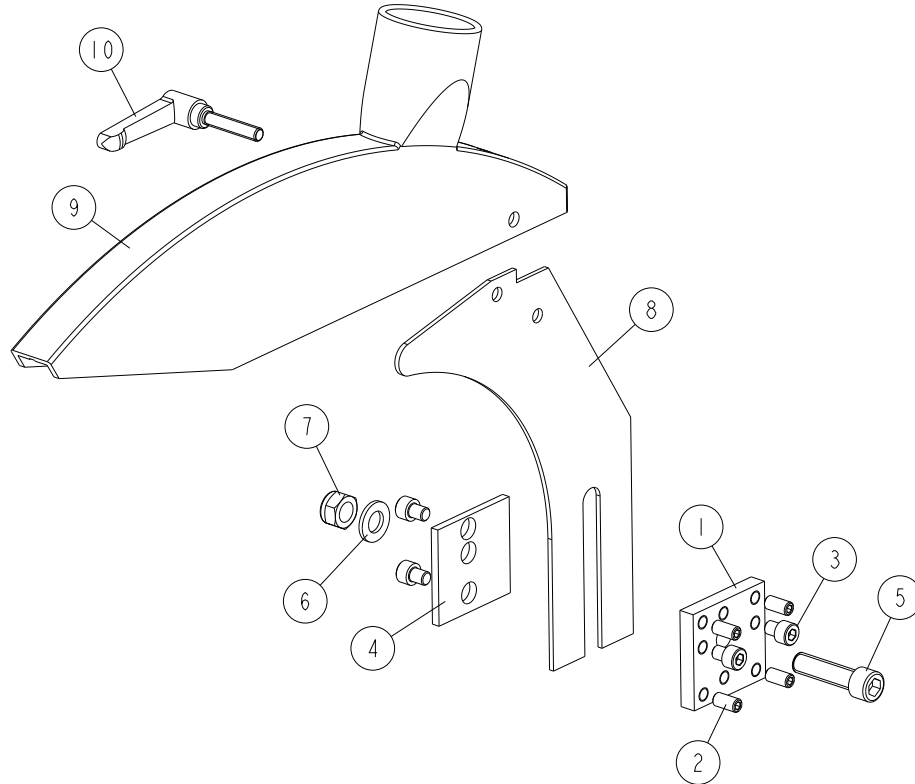
544180_001
544180_MANUAL



REF.	DESCRIPTION (◆ indicates parts available in assemblies only)	PART #	QTY
-	UP/DOWN SCREW ASSEMBLY	544180	1
1	UP/DOWN SCREW	544181	1
2	SELF-LUBRICATING BEARING, AMES N14/N20/N25-14	544037	2
3	BEVEL GEAR M=2,5 T=16	544179	1
4	ROLL PIN 4X30, ISO 8752, STEEL	F81044-11	1
5	WASHER 14.2	546243	1

2.12 Riving Knife Assembly (No. 544053)

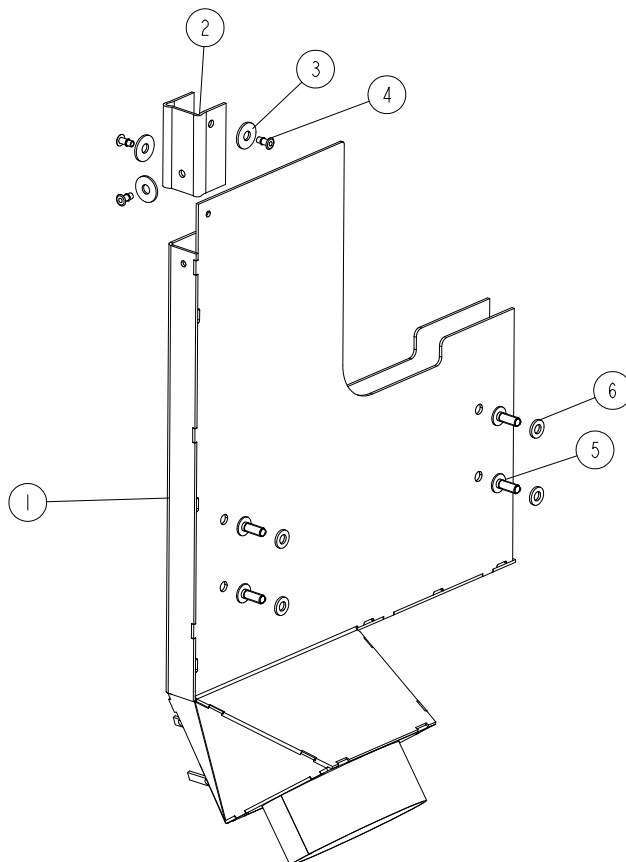
544053_001
544053_MANUAL



REF.	DESCRIPTION (◆ indicates parts available in assemblies only)	PART #	QTY
-	KNIFE ASSEMBLY, RIVING	544053	1
1	PLATE, CLAMPING (2)	544051-1	1
2	SCREW, M8X16-45H DIN913 HEX SOCKET SET W/FLAT POINT	F81002-124	4
3	SCREW, M8X10-8.8 HEX SOCKET HEAD CAP ZINC	F81002-32	4
4	PLATE, CLAMPING (1)	544050-1	1
5	SCREW, M12X45-8.8-B HEX SOCKET HEAD CAP ZINC	F81004-93	1
6	WASHER, 13 FLAT ZINC	F81056-1	1
7	NUT, M12-8-FE/ZN5 DIN 982 HEX NYLON ZINC LOCK	F81034-2	1
-	GUARD, BLADE	562579	1
8	PLATE, RIVING KNIFE	562577	1
9	GUARD	562578	1
10	LEVER, ELESA+GANter GN 302-63-M8-40-SW ADJUSTABLE HAND	544291	1

2.13 Sawdust Chute Assembly (No. 544077)

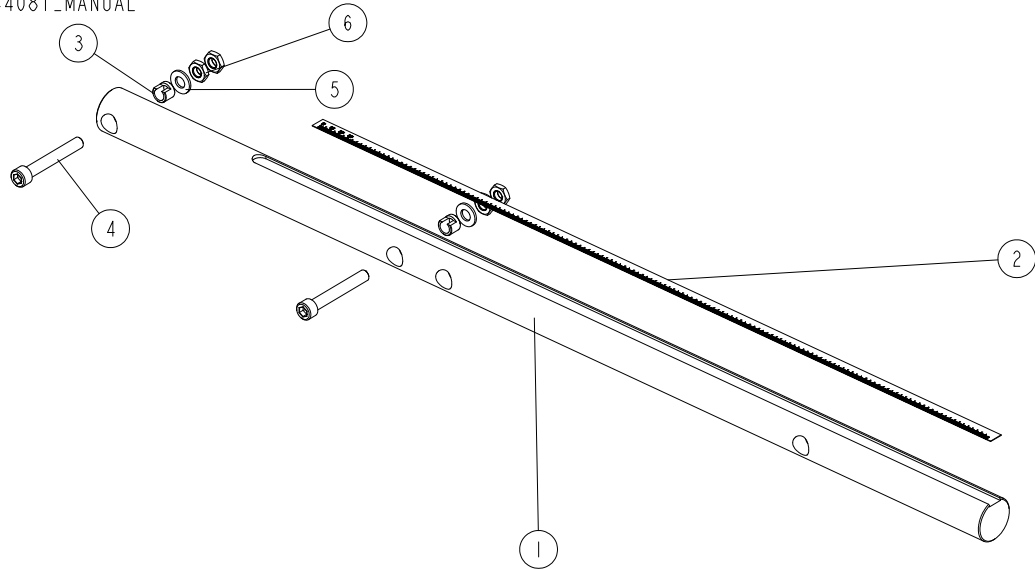
544077_001
544077_MANUAL



REF.	DESCRIPTION (◆ indicates parts available in assemblies only)	PART #	QTY
-	SAWDUST CHUTE ASSEMBLY	544077	1
1	SAWDUST CHUTE	544075-1	1
2	SEAL	544076	1
3	WASHER 6,5 ZC FENDER DIN 9021 ISO 7093	F81053-11	3
4	BREAKING RIVET AL 4X10	F81021-15	3
5	BOLT, M6X16 BN 11252 "BOSSARD"	F81001-24	4
6	WASHER 6.4 ZC DIN 126 ISO 7091	F81055-1	4

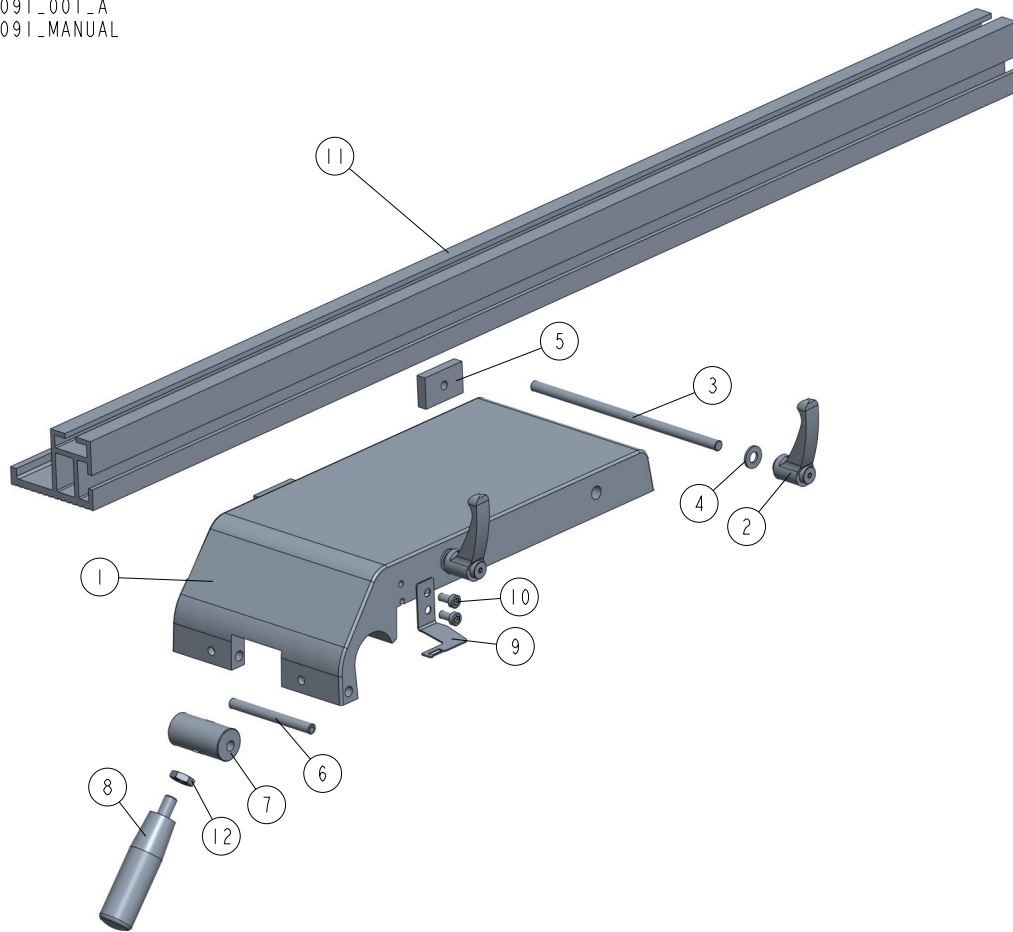
2.14 Scale Guide Bar Assembly (No. 544081)

544081_001_A
544081_MANUAL



REF.	DESCRIPTION (◆ indicates parts available in assemblies only)	PART #	QTY	
-	SCALE GUIDE BAR ASSEMBLY	544081	1	
1	SCALE GUIDE BAR	544079	1	
2	METRIC SCALE	544080	1	
3	SPACER SLEEVE	544082	2	
4	SCREW, M10X70-8.8 FE/ZN5 DIN 912 HEX SOCKET HEAD CAP	F81003-60	2	
5	WASHER, 10.5 FLAT ZINC	F81055-1	2	
6	NUT, M10 DIN439 THIN	F81033-20	4	

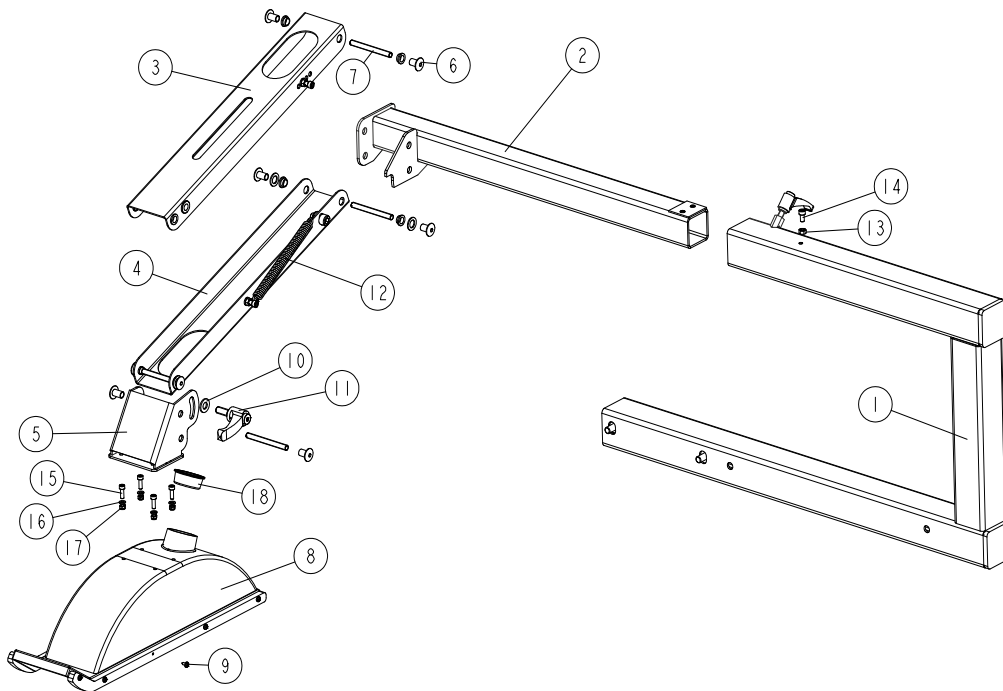
2.15 Board Guide Fence w/Bracket (No. 544091)

544091_001_A
544091_MANUAL

REF.	DESCRIPTION (◆ indicates parts available in assemblies only)	PART #	QTY
-	BOARD GUIDE FENCE W/BACKET - COMPLETE	544091	1
1	BRACKET, BOARD GUIDE FENCE (CAST)	544083-1	1
-	ADJUSTABLE HANDLE ASSEMBLY	544090	2
2	ADJUSTABLE HANDLE ERX.63A-M8	544089	1
3	THREADED ROD M8X185	544088	1
4	WASHER, 8.4 FLAT ZINC	F81054-1	1
5	CLAMPING NUT	544086-1	2
6	ECCENTRIC SLEEVE SHAFT	544085	1
7	ECCENTRIC SLEEVE	544084-1	1
8	FIXED CYLINDRICAL HANDLE I.280/90 P-M10X16	544087	1
9	INDICATOR PLATE	544093-1	1
10	SCREW, M6X12-10.9 DIN 7984 LOW HEX SOCKET HEAD CAP	F81001-80	2
11	BOARD GUIDE FENCE I - 820	544260	1
12	NUT, M10-04-W THIN ZINC	F81033-6	1

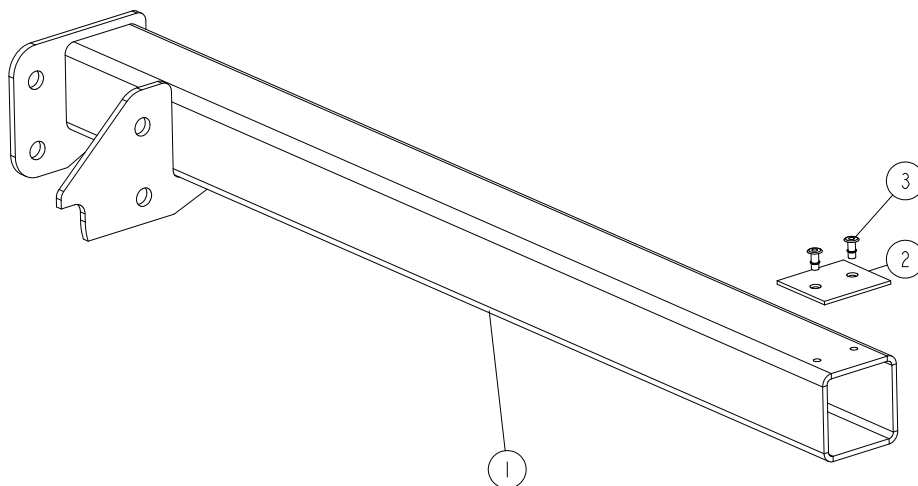
2.16 Upper Guard Assembly (No. 544125)

544125_001_B
544125_MANUAL



REF.	DESCRIPTION (◆ indicates parts available in assemblies only)	PART #	QTY
-	UPPER GUARD ASSEMBLY	544125	1
1	BOTTOM BRACKET ASSEMBLY See Section 2.17	544107	1
2	TELESCOPIC ARM ASSEMBLY See Section 2.18	544113	1
3	UPPER ARM ASSEMBLY See Section 2.19	544120	1
4	LOWER ARM ASSEMBLY See Section 2.20	544118	1
5	ARM CONNECTOR	544122-1	1
6	NUT, ERICSON M8 AN88 COLLAR ZINC	F81032-33	8
7	THREADED ROD M8X80	544121	4
8	BLADE COVER	564932	1
9	SCREW, Z C-ST3.5X9.5 SELF-TAPPING	F81010-4	10
10	WASHER 10,5 ZC DIN 126 ISO 7091	F81055-1	1
11	ADJUSTABLE HANDLE ERZ.78 P-M10X25	544127	1
12	SPRING 2.5X15X140 LESJOFORS 3486	544128	1
13	NUT, M6 8 HEX ZINC	F81031-1	1
14	SCREW M6X12 SHCS ZC 8.8 DIN 912 ISO 4762	F81001-87	1
15	SCREW, M5X16-8.8 HEX SOCKET HEAD CAP ZINC	F81000-25	4
16	WASHER, 5.3 FLAT ZINC	F81052-1	4
17	NUT, M5-8 DIN985 HEX NYLON ZINC LOCK	F81030-2	4
18	CAP, BLADE COVER	546443	1

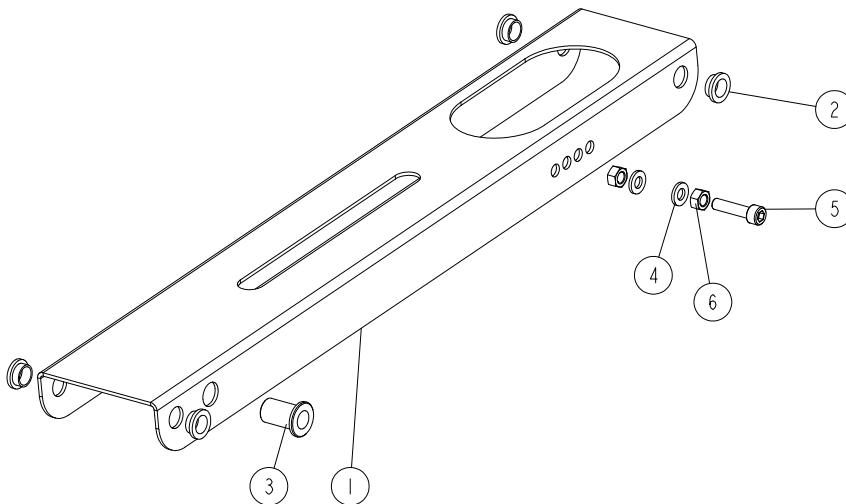
2.18 Telescopic Arm Assembly (No. 544113)

544113_001
544113_MANUAL

REF.	DESCRIPTION (◆ indicates parts available in assemblies only)	PART #	QTY
-	TELESCOPIC ARM ASSEMBLY	544113	1
1	TELESCOPIC ARM	544112-1	1
2	POLYETHYLENE INSERT	544111	1
3	BREAK MANDREL RIVET AL 4X10	F81021-15	2

2.19 Upper Arm Assembly (No. 544120)

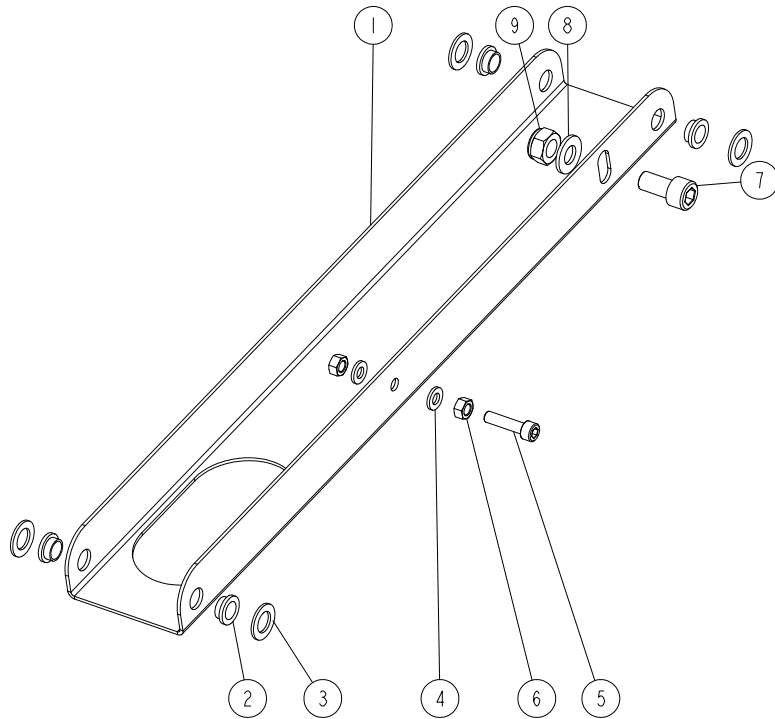
544120_001
544120_MANUAL



Ref	DESCRIPTION (◆ indicates parts available in assemblies only)	PART #	QTY
-	UPPER ARM ASSEMBLY	544120	1
1	UPPER ARM	544119-1	1
2	BUSHING WITH FLANGE 10/12-6 FLANGE 16-2	544117	4
3	RIVET NUT M10 ZC W/KNURLED SHANK AND ROUND PAN HEAD	F81033-15	1
4	WASHER 6.4 ZC DIN 126 ISO 7091	F81053-1	2
5	BOLT M6X25 SHCS ZC PT 8.8 DIN 912 ISO 4762	F81001-41	1
6	NUT M6 ZC 8 DIN 934	F81031-1	2

2.20 Lower Arm Assembly (No. 544118)

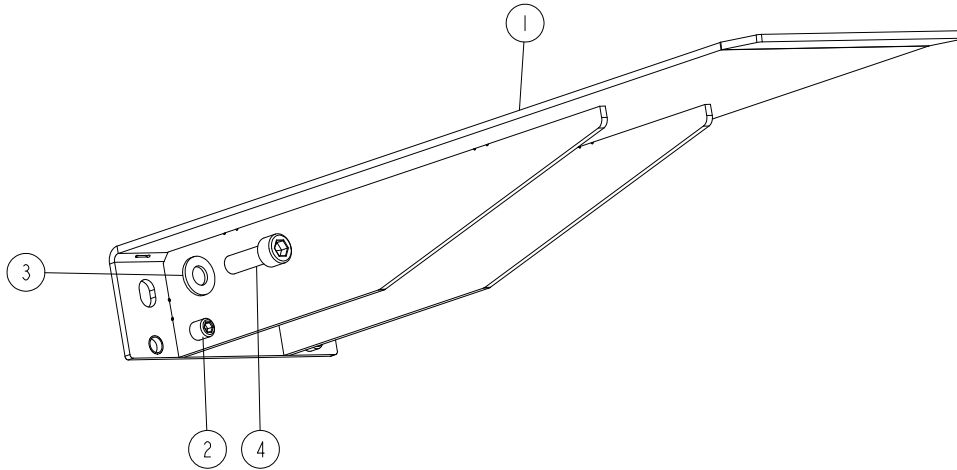
544118_001
544118_MANUAL



REF.	DESCRIPTION (◆ indicates parts available in assemblies only)	PART #	QTY
-	LOWER ARM ASSEMBLY	544118	1
1	LOWER ARM	544115-1	1
2	BUSHING WITH FLANGE 10/12-6 FLANGE 16-2	544117	4
3	SPACER WASHER 12/20-1.5	544116-1	4
4	WASHER 6,4 ZC DIN 126 ISO 7091	F81053-1	2
5	BOLT M6X25 SHCS ZC PT 8.8 DIN 912 ISO 4762	F81001-41	1
6	NUT M6 ZC 8 DIN 934	F81031-1	2
7	SCREW M10X20 SHCS ZC 8.8 DIN 912 ISO 4762	F81003-108	1
8	WASHER 10.5 ZC DIN 126 ISO 7091	F81055-1	1
9	NUT M10 ZC 8 NYLOCK DIN 982 ISO 7040	F81033-1	1

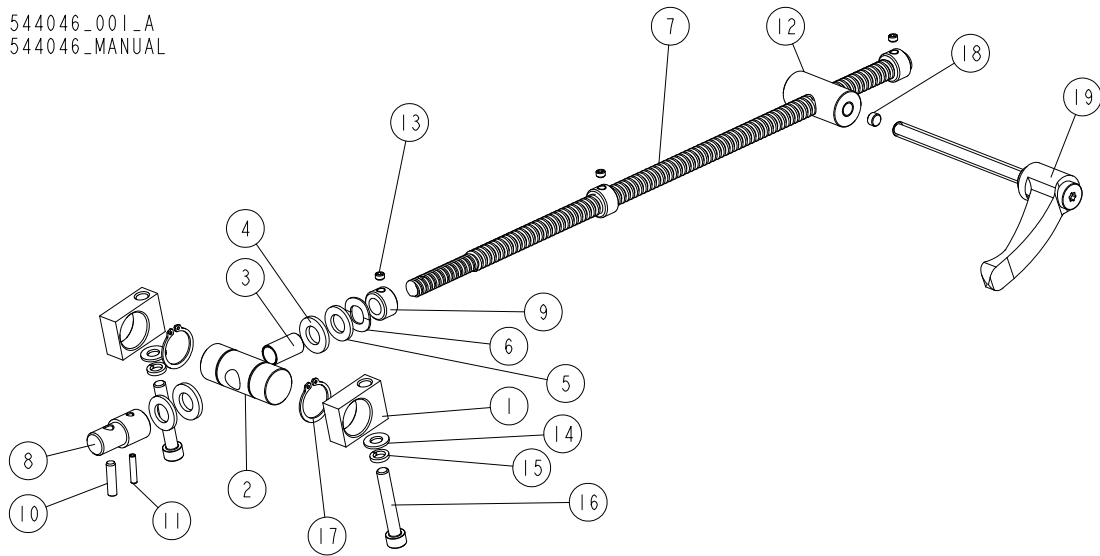
2.21 Extension Shelf Assembly (No. 544057)

544057_001
544057_MANUAL



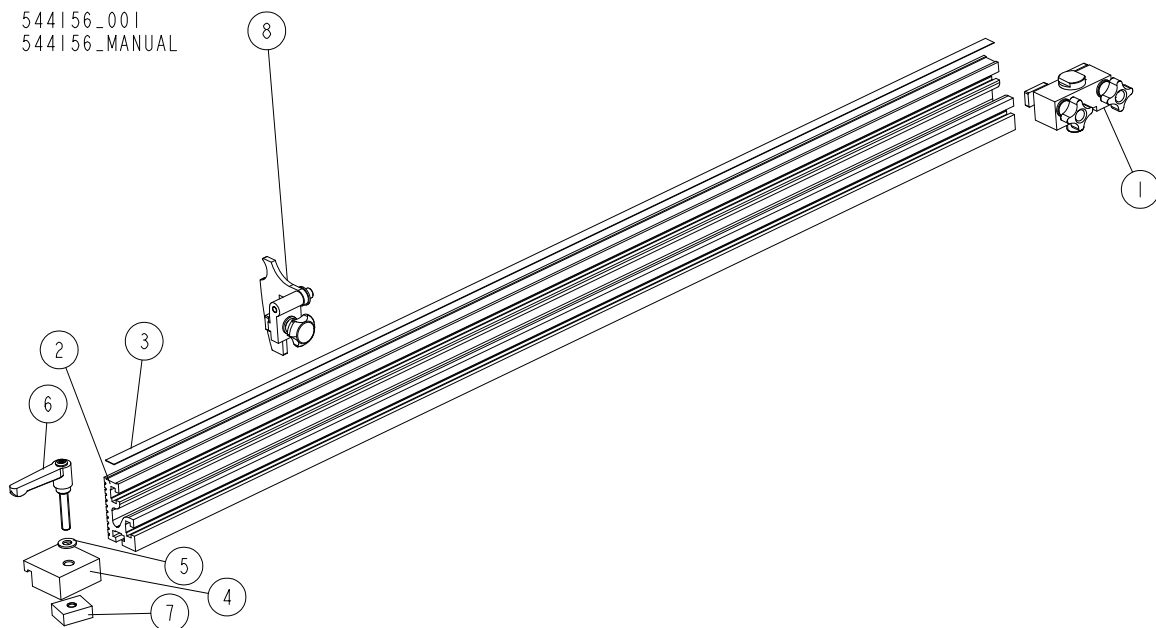
Ref	DESCRIPTION (◆ indicates parts available in assemblies only)	PART #	QTY	
-	EXTENSION SHELF ASSEMBLY	544057	1	
1	EXTENSION SHELF WELDMENT	544056-1	1	
2	SCREW, M10X12-45H ZINC SET	F81003-46	2	
3	WASHER 10.5 ZC DIN 126 ISO 7091	F81055-1	2	
4	SCREW M10X30 SHCS ZC 8.8 DIN 912 ISO 4762	F81003-110	2	

2.22 Blade Tilt Drive Screw (No. 544046)

544046_001_A
544046_MANUAL

REF.	DESCRIPTION (◆ indicates parts available in assemblies only)	PART #	QTY
-	BLADE TILT SCREW ASSEMBLY	544046	1
1	NUT SUPPORT BRACKET	544042	2
2	HINGE	544041	1
3	SLIDE BUSHING	544044	1
4	WASHER 13/24-3	544045	2
5	WASHER, 13 FLAT ZINC	F81056-1	2
6	WASHER, M12 DIN 137 B SPRING WAVED	F81056-21	1
7	BLADE TILT DRIVE SCREW	544043	1
8	PIN, SCALE DISK MOUNT	533595-1	1
9	RETAINING NUT	544039	3
10	PIN, 6X30 ROLL ZINC	F81045-7	1
11	PIN, 8752-4X20 ROLL	F81044-11	1
12	NUT	544040	1
13	SCREW, M6X4-45H FE/ZN5 DIN 913 SET	F81001-123	3
14	WASHER, 8.4 FLAT ZINC	F81054-1	2
15	WASHER, 8.2 SPLIT LOCK ZINC	F81054-4	2
16	SCREW M8X40 SHCS ZC 8.8 DIN 912 ISO 4762	F81002-85	2
17	RING, 25Z OUTSIDE RETAINING	F81090-22	2
18	PRESSURE INSERT	544138	1
19	COMPLETE HANDLE M10	544143	1

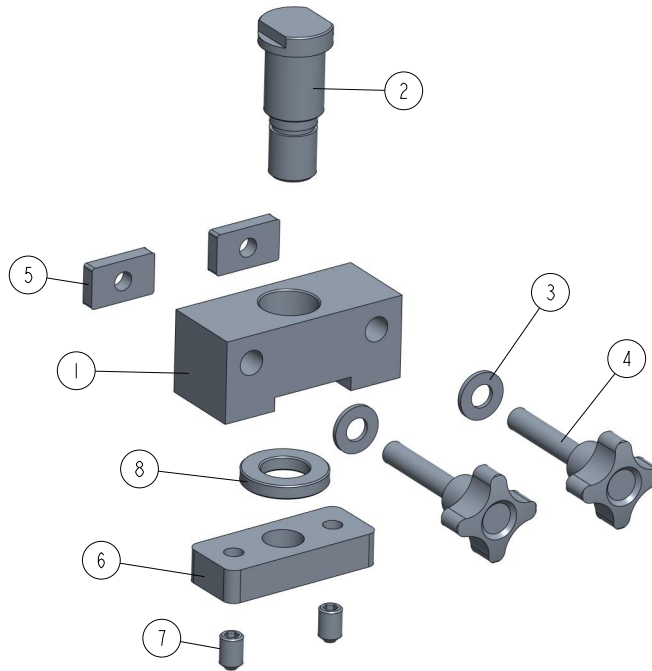
2.23 Angle Cutting Guide Assembly (No. 544156)



Ref	DESCRIPTION (* indicates parts available in assemblies only)	PART #	QTY
-	ANGLE CUTTING GUIDE ASSEMBLY	544156	1
1	MOUNTING ASSEMBLY See Section 2.24	544154	1
-	MAIN TABLE ADDITIONAL WITH SCALE	544288	1
2	MAIN TABLE ADDITIONAL GUIDIE	544286	1
3	SCALE	544287	1
-	CLAMP	544292	1
4	BLOCK	544289-1	1
5	WASHER 8,4 ZC DIN 126 ISO 7091	F81054-1	1
6	ADJUSTABLE HAND LEVER ELESA+GANTER GN 302-63-M8-40-SW	544291	1
7	THREADED BLOCK	544290-1	1
8	SIDE CLAMP See Section 2.25	544350	1

2.24 Mounting Assembly (No. 544154)

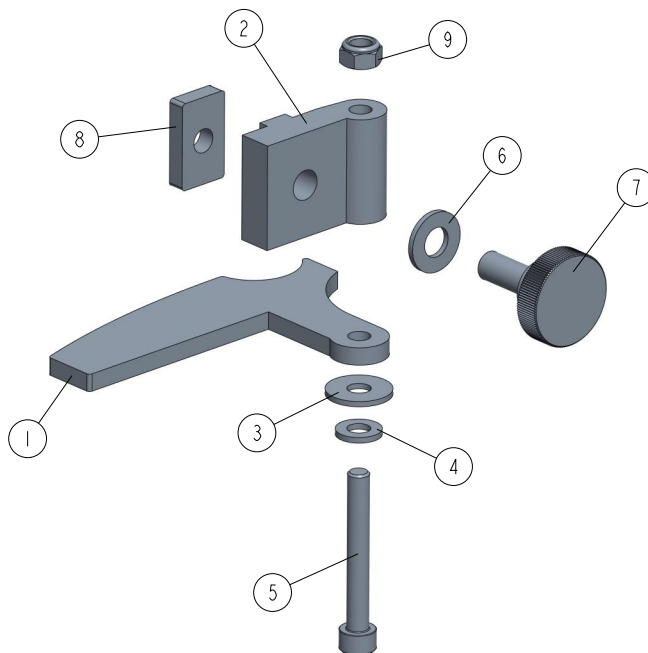
544154_001_A
544154_MANUAL



REF.	DESCRIPTION (◆ indicates parts available in assemblies only)	PART #	QTY
-	MOUNTING ASSEMBLY	544154	1
1	BLOCK, MOUNT	544152-1	1
2	PIN	544146-1	1
3	WASHER, 8.4 FLAT ZINC	F81054-1	2
4	GRIP, KIPP K1089.43208X40 PALM	544155	2
5	NUT, M8	544153-1	2
6	BLOCK, GUIDE	544273-1	1
7	SCREW M8X12 HSS W/CONE POINT ZC 45H DIN	F81002-105	2
8	WASHER	544355-1	1

2.25 Side Clamp (No. 544350)

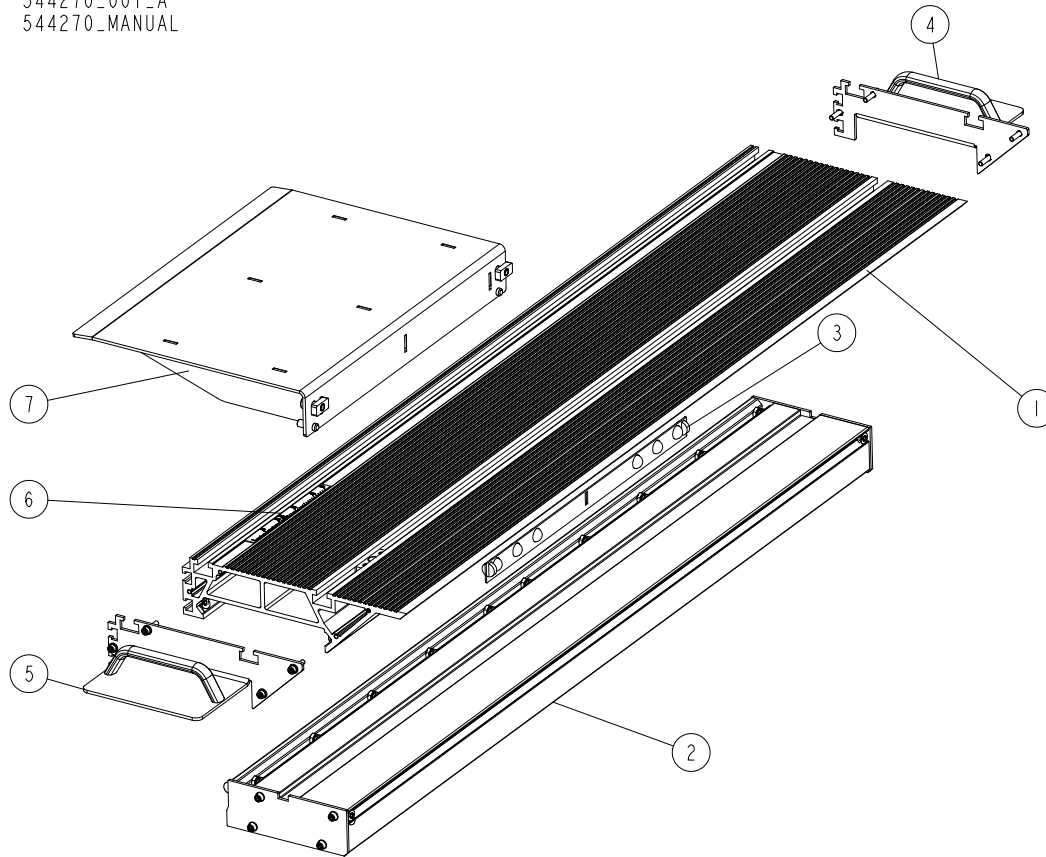
544350_001_A
544350_MANUAL



REF.	DESCRIPTION (◆ indicates parts available in assemblies only)	PART #	QTY
-	CLAMP, SIDE	544350	1
1	PLATE	544347-1	1
2	BLOCK, ALUMINUM	544348-1	1
3	WASHER, 6.5 SPECIAL FLAT ZINC-PL.	F81053-11	1
4	WASHER, 6.4 FLAT ZINC	F81053-1	1
5	SCREW M6X45 SHC ZC 8.8 DIN 912 ISO 4762	F81001-86	1
6	WASHER, 8.4 FLAT ZINC	F81054-1	1
7	KNURLED KNOB M8-20	592851	1
8	NUT, M8	544153-1	1
9	NUT, M6-8-B NYLON HEX ZINC LOCK	F81031-2	1

2.26 Work Table (No. 544270)

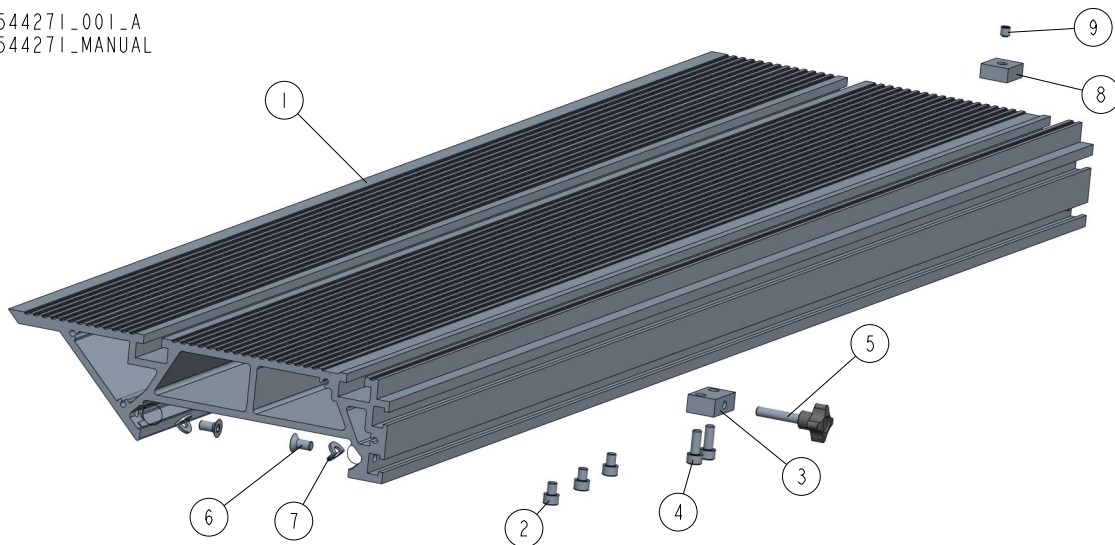
544270_001_A
544270_MANUAL



REF.	DESCRIPTION (◆ indicates parts available in assemblies only)	PART #	QTY
-	WORK TABLE	544270	1
1	MAIN PROFILE See Section 2.27	544271	1
2	MAIN TABLE LOWER PROFILE See Section 2.28	544282	1
3	COMPLETE BEARING BALL STRIP See Section 2.29	544283	2
4	MAIN PROFILE SIDE HANDLE See Section 2.30	544269	1
5	MAIN PROFILE SIDE HANDLE See Section 2.6	544285	1
6	MEASURE	544274	1
7	WORK TABLE SIDE SHELF See Section 2.32	544267	1

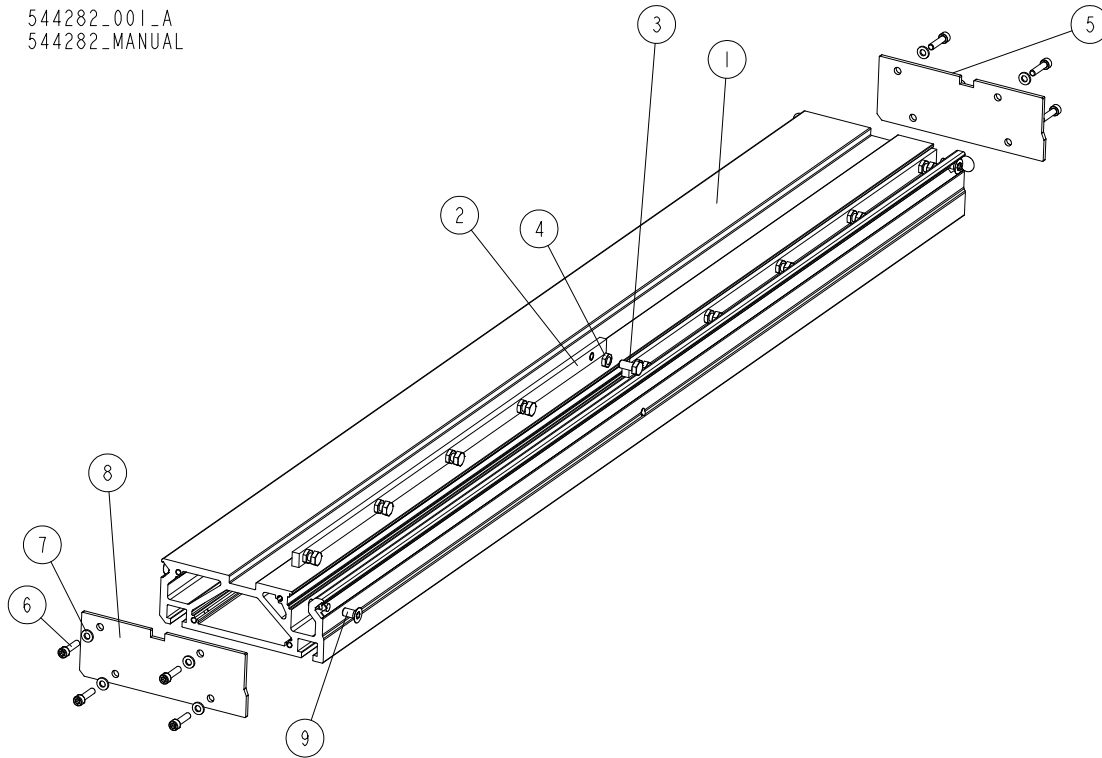
2.27 Main Profile (No. 544271)

544271_001_A
544271_MANUAL



REF.	DESCRIPTION (◆ indicates parts available in assemblies only)	PART #	QTY
-	MAIN PROFILE	544271	1
1	MAIN PROFILE WITH GUIDES	544295	1
2	SCREW, M8X10-8.8 HEX SOCKET HEAD CAP ZINC	F81002-32	3
3	PROFILE BLOCK	544272-1	1
4	SCREW, M8X20-8.8 HEX SOCKET HEAD CAP ZINC	F81002-30	2
5	GRIP, KIPP K1089.43208X40 PALM	544155	1
6	SCREW M8X16 HSFHS ZC 8.8 DIN7991 ISO106	F81002-115	4
7	BENT WASHER 10	544294	4
8	BLOCK W/THREADED HOLE	544290-1	1
9	SCREW, M8X8-33H GEOMET HEX SOCKET SET FLAT POINT	F81014-1	1

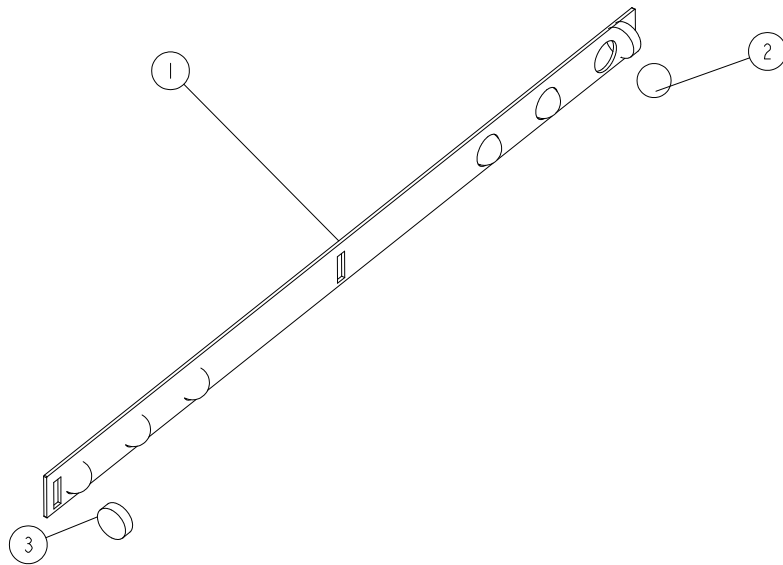
2.28 Lower Profile (No. 544282)

544282_001_A
544282_MANUAL

REF.	DESCRIPTION (◆ indicates parts available in assemblies only)	PART #	QTY	
-	MAIN TABLE LOWER PROFILE	544282	1	
1	LOWER PROFILE FOR A WORKTABLE WITH INSERTED GUIDE	544296	1	
2	BAR	544281	2	
3	BOLT, M8X16 -8.8-B HEX HEAD FULL THREAD ZINC	F81002-20	10	
4	NUT M8 BLACK 04 DIN 439 ISO 4035 THIN	F81032-17	10	
5	LOWER PROFILE SIDE PLATE	546462-1	1	
6	SCREW, M6X25 -8.8 HEX SOCKET HEAD CAP ZINC	F81001-41	8	
7	WASHER, 6.4 FLAT ZINC	F81053-1	8	
8	LOWER PROFILE SIDE PLATE	544279-1	1	
9	SCREW M8X16 HSFHS ZC 8.8 DIN7991 ISO106	F81002-115	4	

2.29 Bearing Ball Strip (No. 544283)

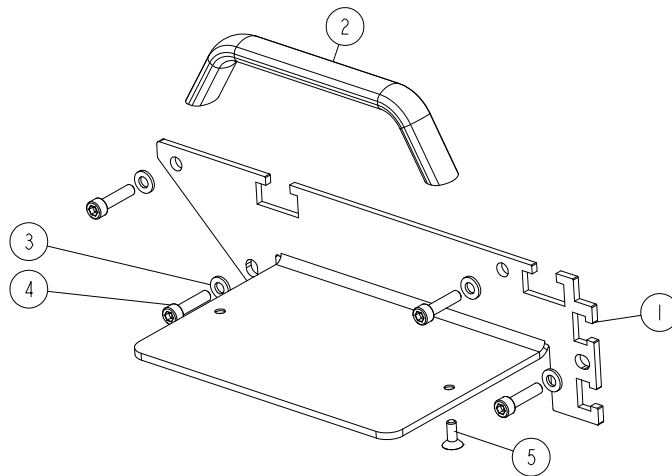
544283_001_A
544283_MANUAL



REF.	DESCRIPTION (◆ indicates parts available in assemblies only)	PART #	QTY
-	BEARING BALL STRIP	544283	1
1	STRIP, BEARING BALL	544275	1
2	BEARING BALL FI 18 MM	546442	6
3	FELT INSERT FI 19MM, 3/4"	544277	2

2.30 Main Profile Side Handle (No. 544269)

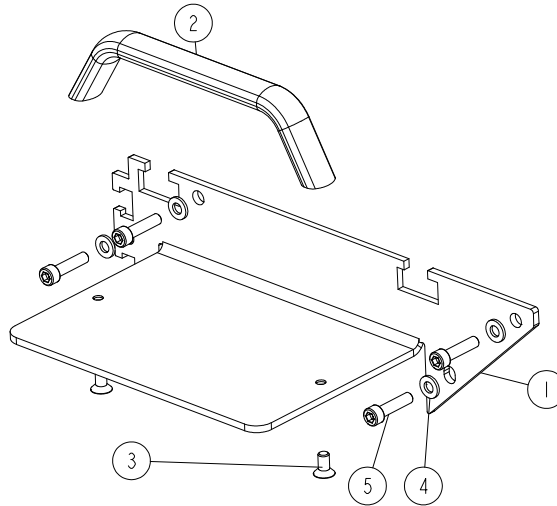
544269_001_A
544269_MANUAL



REF.	DESCRIPTION (◆ indicates parts available in assemblies only)	PART #	QTY
-	MAIN PROFILE SIDE HANDLE	544269	1
1	HANDLE PLATE	544268-1	1
2	U-HANDLE, ELESA+GANter GN_564-25-160	546491	1
3	WASHER, 6.4 FLAT ZINC	F81053-1	4
4	SCREW, M6X25 -8.8 HEX SOCKET HEAD CAP ZINC	F81001-41	4
5	SCREW M5X14 HSFH ZC 8.8 DIN 7991 ISO1064	F81001-110	2

2.31 Main Profile Side Handle (No. 544285)

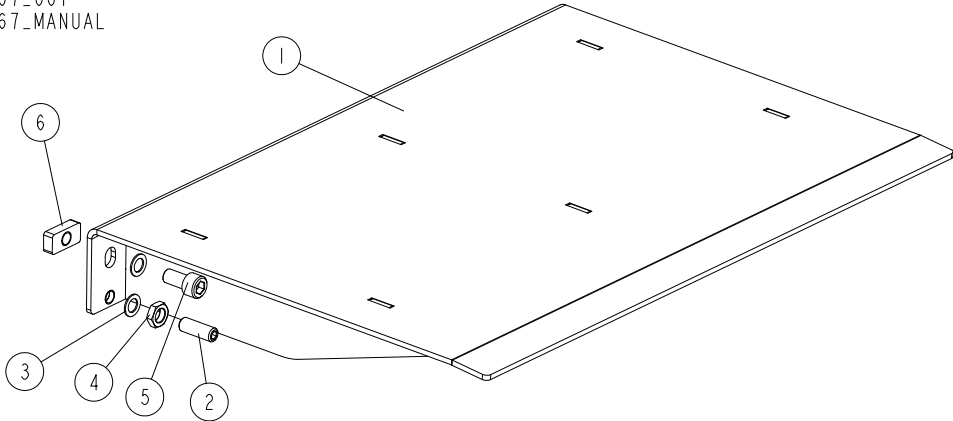
544285_001_A
544285_MANUAL



REF.	DESCRIPTION (◆ indicates parts available in assemblies only)	PART #	QTY
-	MAIN PROFILE SIDE HANDLE	544285	1
1	HANDLE PLATE	544284-1	1
2	U- HANDLE, ELESA+GANter GN_564-25-160	546491	1
3	SCREW, M6X12-10.9 DIN7991 FLAT SOCKET HEAD CAP ZINC	F81001-54	2
4	WASHER, 6.4 FLAT ZINC	F81053-1	4
5	SCREW, M6X25 -8.8 HEX SOCKET HEAD CAP ZINC	F81001-41	4

2.32 Side Shelf (No. 544267)

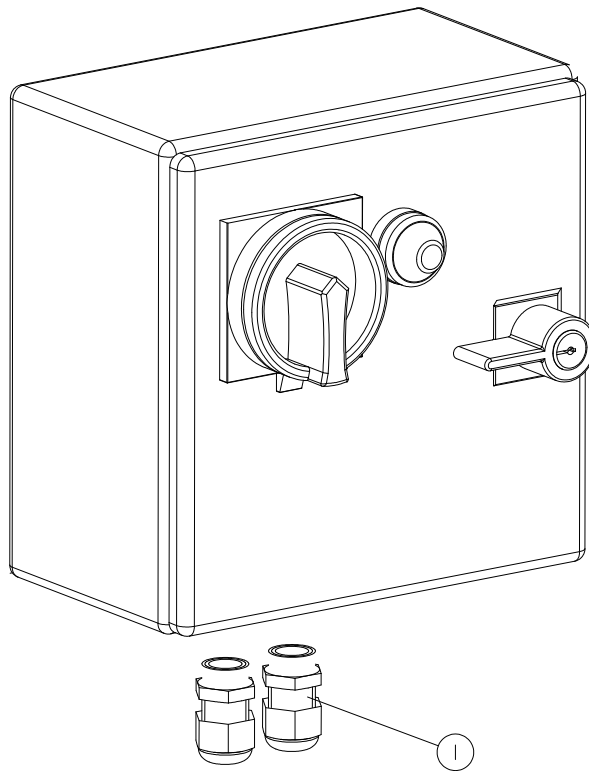
544267_001
544267_MANUAL



REF.	DESCRIPTION (◆ indicates parts available in assemblies only)	PART #	QTY
-	WORK TABLE SIDE SHELF	544267	1
1	SIDE SHELF	544266-1	1
2	SCREW, M10X30 33H GEOMET HEX SOCKET SET W/FLAT POINT	F81003-35	2
3	WASHER, 10X16X1 DIN988 FLAT	F81055-15	4
4	NUT, M10X1-04-ST-A2E ISO8675 THIN	F81033-10	2
5	SCREW M10X20 SHCS ZC 8.8 DIN 912 ISO 4762	F81003-108	2
6	SHELF BLOCK	544263-1	2

2.33 MS300EA3S Electrical Box (Part No. 536932-6)

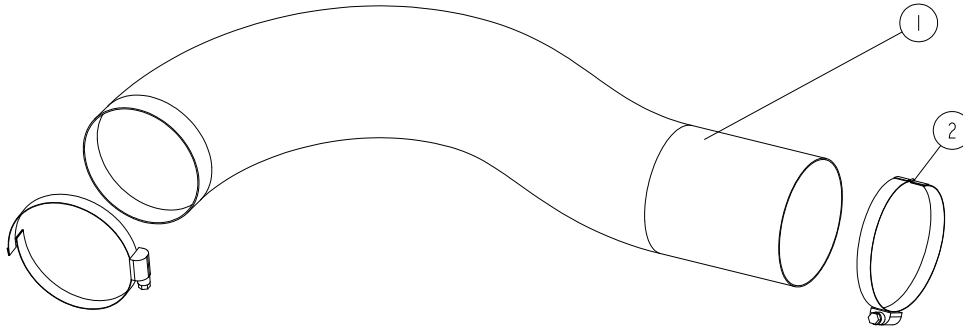
536932-6_001
536932-6_MANUAL



REF.	DESCRIPTION (◆ indicates parts available in assemblies only)	PART #	QTY
-	BOX, MS300EA3S ELECTRICAL	536932-6	1
1	GLAND, DW11/H CABLE	544185	2

2.34 Extraction Hose Assembly (No. 544186)

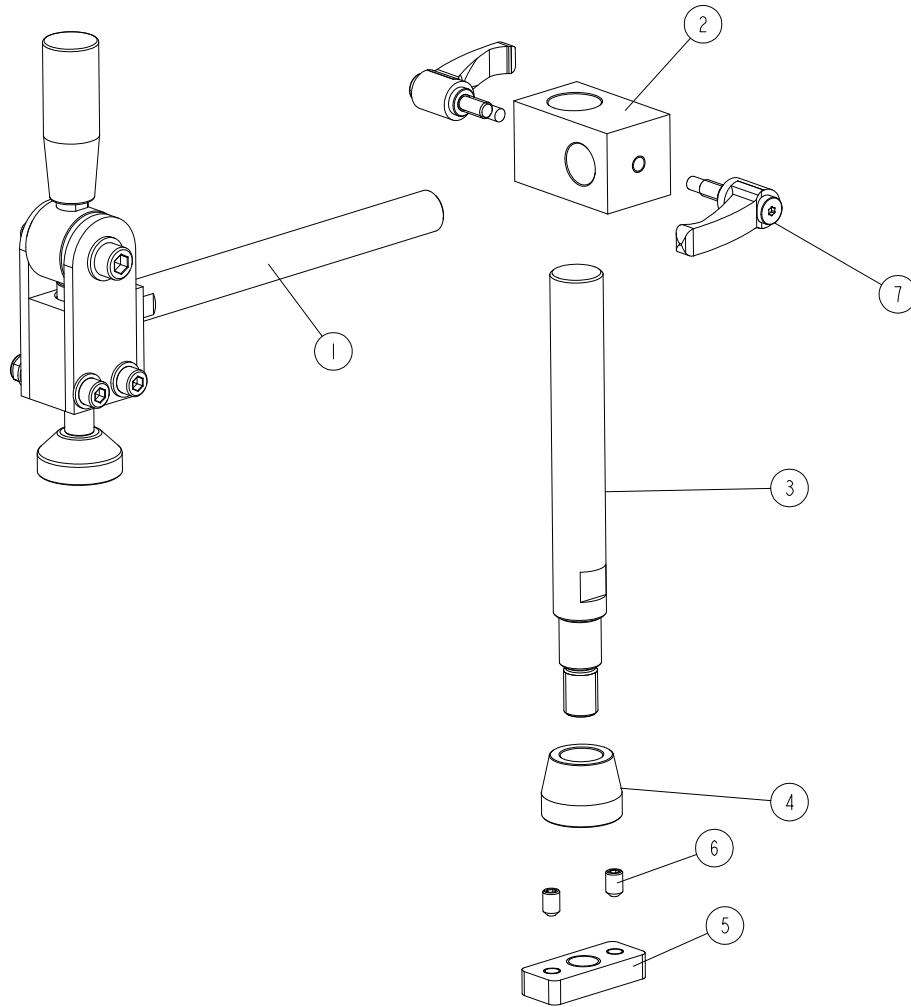
544186_001
544186_MANUAL



REF.	DESCRIPTION (◆ indicates parts available in assemblies only)	PART #	QTY
-	EXTRACTION HOSE ASSEMBLY	544186	1
1	EXTRACTION HOSE DIA=100; L=1100	544185	1
2	BRIDGE CLAMP BC (N90-110)	F81095-11	2

2.35 Hold-Down Assembly (No. 542460)

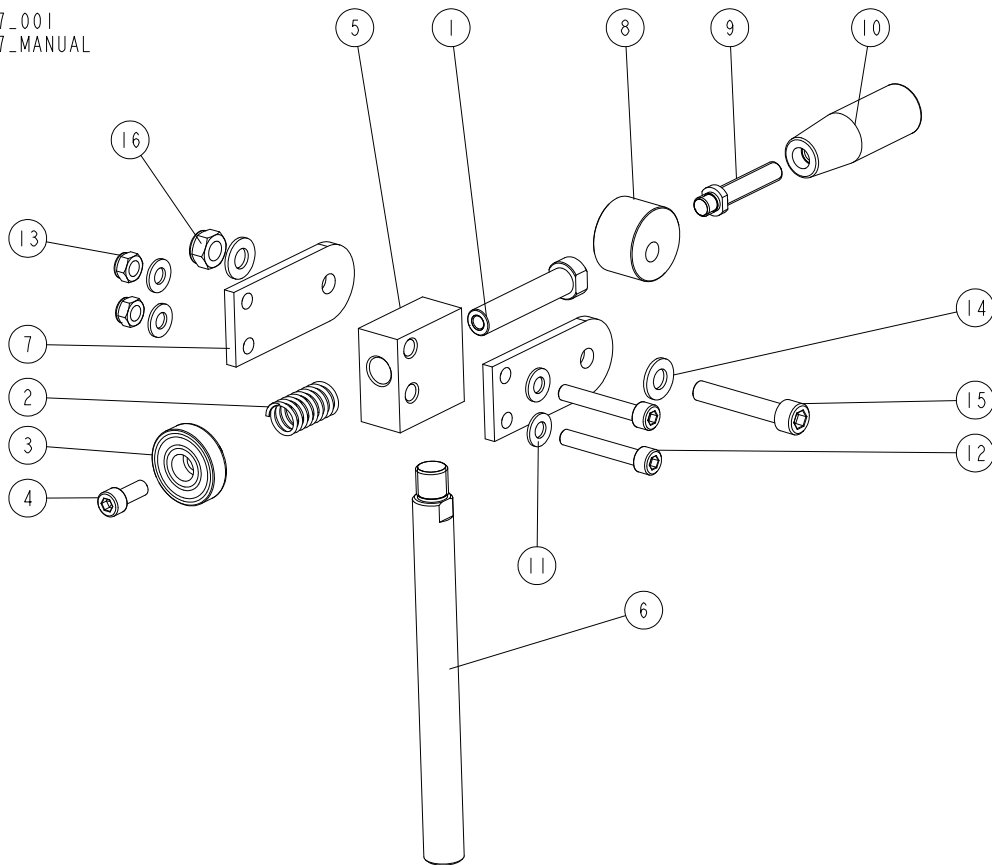
542460_001
542460_MANUAL



REF.	DESCRIPTION (◆ indicates parts available in assemblies only)	PART #	QTY
-	HOLD-DOWN ASSEMBLY	542460	1
1	ARM, HOLD-DOWN See Section 2.36	544367	1
2	BLOCK	544353-1	1
3	ROD	544352-1	1
4	SLEEVE, CONICAL	544381-1	1
5	BLOCK, GUIDE	544273-1	1
6	SCREW, M8X12-45H FE/ZN DIN914/ PN82315 HEX SOCKET SET W/CONE POINT	F81002-105	2
7	HANDLE, ERZ.63 P-M8X16 ADJUSTABLE	535988	2

2.36 Hold-Down Arm (No. 544367)

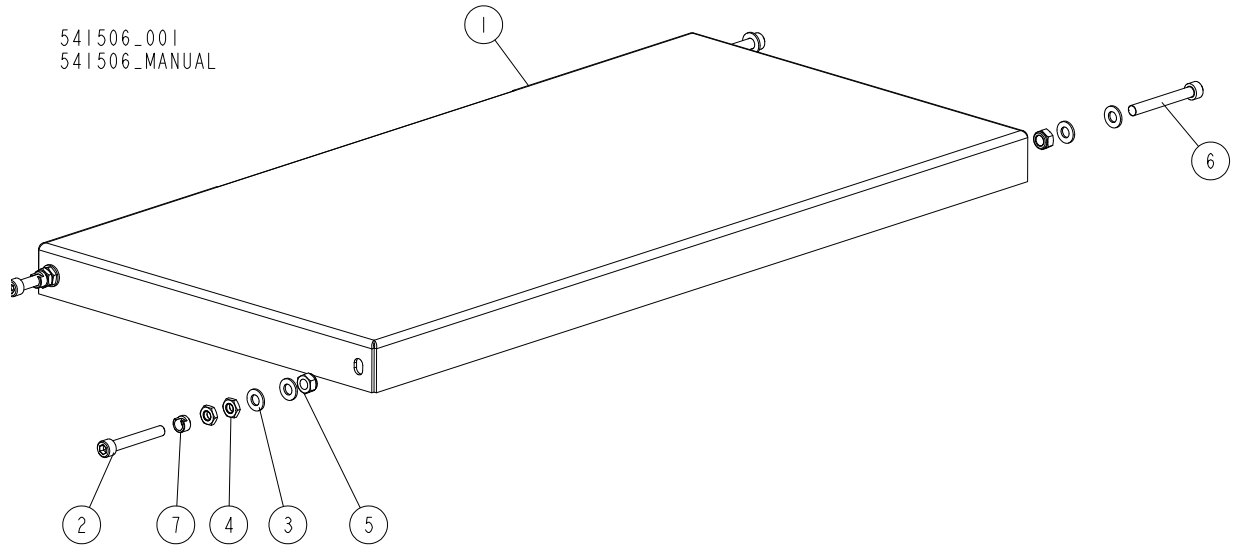
544367_001
544367_MANUAL



REF.	DESCRIPTION (◆ indicates parts available in assemblies only)	PART #	QTY
-	ARM, HOLD-DOWN	544367	1
-	HOLD-DOWN ASSEMBLY	544360	1
1	SHAFT II	544359-1	1
2	SPRING, 18.3X35X2	544361	1
3	ELEMENT, HOLD-DOWN	544358-1	1
4	SCREW, M8X20-8.8 HEX SOCKET HEAD CAP ZINC	F81002-30	1
5	BLOCK	544356-1	1
6	SHAFT	544357-1	1
7	PLATE	544362-1	2
-	HANDLE ASSEMBLY	544365	1
8	CAM	544363-1	1
9	PIN	544364-1	1
10	HANDLE, Elesa CYLINDRICAL	544366	1
11	WASHER, 8.4 FLAT ZINC	F81054-1	4
12	SCREW, M8X40-8.8 HEX SOCKET HEAD CAP ZINC	F81002-85	2
13	NUT, M8-8-B HEX NYLON ZINC LOCK	F81032-2	2
14	WASHER, 10.5 FLAT ZINC	F81055-1	2
15	SCREW, M10X55-8.8 HEX SOCKET HEAD CAP ZINC	F81003-55	1
16	NUT, M10-8-B HEX NYLON ZINC LOCK	F81033-1	1

2.37 Table Extension (No. 541506)

541506_001
541506_MANUAL



REF.	DESCRIPTION (◆ indicates parts available in assemblies only)	PART #	QTY
-	EXTENSION, MS300 TABLE - COMPLETE	541506	1
1	EXTENSION, MS300 TABLE	546410-1	1
2	SCREW, M10X70-8.8 FE/ZN5 DIN 912 HEX SOCKET HEAD CAP	F81003-60	2
3	WASHER, 10.5 FLAT ZINC	F81055-1	8
4	NUT, M10 DIN439 THIN	F81033-20	4
5	NUT, M10-8-B HEX NYLON ZINC LOCK	F81033-1	4
6	SCREW, M10X80-8.8HEX SOCKET HEAD CAP ZINC	F81003-69	2
7	BUSHING, SPACER	546483	2