

# **Wood-Mizer®**

## **Parts Manual**

---

**MP360**

**rev. A1.02**

---



**Safety is our #1 concern!** Read and understand all safety information and instructions before operating, setting up or maintaining this machine.

*Form #2342*

# Table of Contents

# Section-Page

<b>SECTION 1</b>	<b>GENERAL INFORMATION</b>	<b>1-1</b>
1.1	How To Use the Parts List.....	1-1
1.2	Sample Assembly .....	1-1
<b>SECTION 2</b>	<b>MECHANICAL ASSEMBLY</b>	<b>2-1</b>
2.1	Board Guide Fence 2 .....	2-1
2.2	Mechanical Assembly .....	2-2
2.3	Left Guard .....	2-4
2.4	Right Guard .....	2-5
2.5	Moving Plate Assembly .....	2-6
2.6	Up/Down Limiter Assembly .....	2-7
2.7	Top Cover Assembly .....	2-8
<b>SECTION 3</b>	<b>OUTSIDE BODY</b>	<b>3-1</b>
3.1	Outside Body .....	3-1
3.2	Table .....	3-3
3.3	Right Spindle Assembly .....	3-4
3.4	Cutter Guard .....	3-6
3.5	Bottom Cutter .....	3-7
3.6	Bottom Helical Cutterhead .....	3-8
3.7	Sawdust Outlet .....	3-9
3.8	Spindle Moving Assembly .....	3-10
3.9	Left Spindle Assembly .....	3-12
3.10	Clamp Roller Assembly II .....	3-14
3.11	Clamp Roller Assembly .....	3-15
3.12	Foot Set .....	3-16
<b>SECTION 4</b>	<b>INSIDE BODY</b>	<b>4-1</b>
4.1	Inside Body .....	4-1
4.2	Rods .....	4-3
4.3	Feed Assembly .....	4-4
4.4	Shaft With Protective Cover .....	4-5
4.5	Bearing .....	4-6
4.6	Drive Shaft Assembly .....	4-7
4.7	Up/Down System .....	4-8
4.8	Upper Cutter .....	4-10
4.9	Helical Upper Cutter .....	4-11
4.10	Guard .....	4-12
4.11	Guard Set .....	4-13
<b>SECTION 5</b>	<b>TABLES</b>	<b>5-1</b>
5.1	Outfeed Table .....	5-1

## Table of Contents

## Section-Page

5.2	Infeed Table .....	5-2
5.3	Rear Adjustment Rail .....	5-4
5.4	Front Adjustment Rail .....	5-5
5.5	Board Guide Fence 1 .....	5-6
5.6	Infeed Table 2m (Option) .....	5-8
5.7	Infeed Table Top .....	5-10
5.8	Board Guide Fence .....	5-11
<b>SECTION 6      MOTOR KITS</b>		<b>6-1</b>
6.1	Motor Kit for MP360 EH 3x400V CE .....	6-1
6.2	Motor Kit for MP360BU 3x230V UL .....	6-2
6.3	Safety Switch Assembly 4 .....	6-3
6.4	Emergency Stop Assembly .....	6-4
6.5	Side Cutter Drive .....	6-5
6.6	Feed Drive .....	6-6
6.7	Upper Horizontal Cutter Drive .....	6-7
6.8	Bottom Horizontal Cutter Drive .....	6-9
6.9	Electrical Box Mount .....	6-10
6.10	Electrical Box Mount - Complete.....	6-11
6.11	Safety Switch (1) .....	6-12
6.12	Safety Switch (2) .....	6-13
6.13	MP360H Electrical Box .....	6-14
6.14	Safety Switch Assembly (3) .....	6-15
<b>SECTION 7      DECALS</b>		<b>7-1</b>
7.1	Decals MP360 .....	7-1

## SECTION 1 GENERAL INFORMATION

### 1.1 How To Use the Parts List

- Use the index above to locate the assembly that contains the part you need.
- Go to the appropriate section and locate the part in the illustration.
- Use the number pointing to the part to locate the correct part number and description in the table.
- Parts shown indented under another part are included with that part.
- Parts marked with a diamond (◆) are only available in the assembly listed above the part.

See the sample table below. Sample Part #A01111 includes part F02222-2 and subassembly A03333. Subassembly A03333 includes part S04444-4 and subassembly K05555. The diamond (◆) indicates that S04444-4 is not available except in subassembly A03333. Subassembly K05555 includes parts M06666 and F07777-77. The diamond (◆) indicates M06666 is not available except in subassembly K05555.

1.2 Sample Assembly				
REF.	DESCRIPTION (◆ Indicates Parts Available In Assemblies Only)	PART #	QTY	
	Sample Assembly, Complete (Includes All Indented Parts Below)	A01111	1	
1	Sample Part	F02222-22	1	
	Sample Subassembly (Includes All Indented Parts Below)	A03333	1	
2	Sample Part (◆ Indicates Part Is Only Available With A03333)	S04444-4	1	◆
	Sample Subassembly (Includes All Indented Parts Below)	K05555	1	
3	Sample Part (◆ Indicates Part Is Only Available With K05555)	M06666	2	◆
4	Sample Part	F07777-77	1	

#### To Order Parts:

- From Europe call our European Headquarters and Manufacturing Facility in Kolo, Poland at **+48-63-2626000**. From the continental U.S., call our toll-free Parts hotline at **1-800-525-8100**. Have your customer number, vehicle identification number, and part numbers ready when you call. From other international locations, contact the Wood-Mizer distributor in your area for parts.

#### Office Hours:

Country	Monday - Friday	Saturday	Sunday
Poland	7-15	Closed	Closed
US	8 a.m.- 5 p.m.	8 a.m.- 12 p.m.	Closed

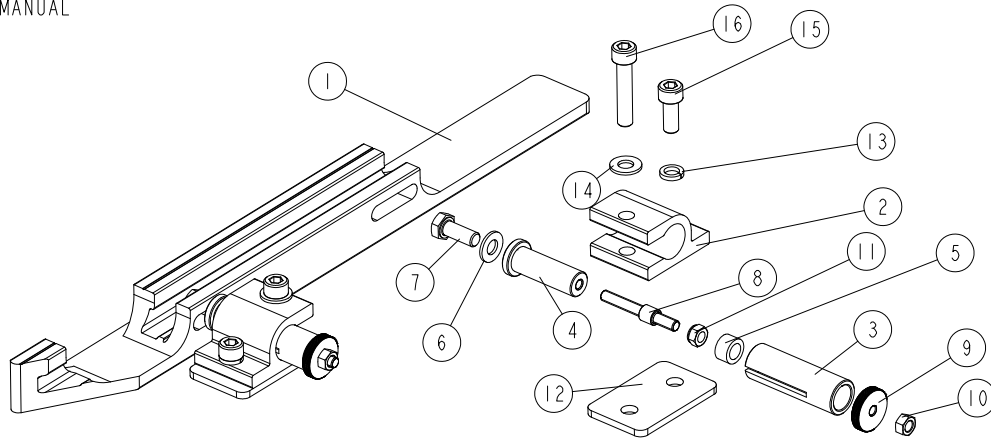


**CAUTION!** It is strongly recommended that only original spare parts be used.

## SECTION 2 MECHANICAL ASSEMBLY

### 2.1 Board Guide Fence 2

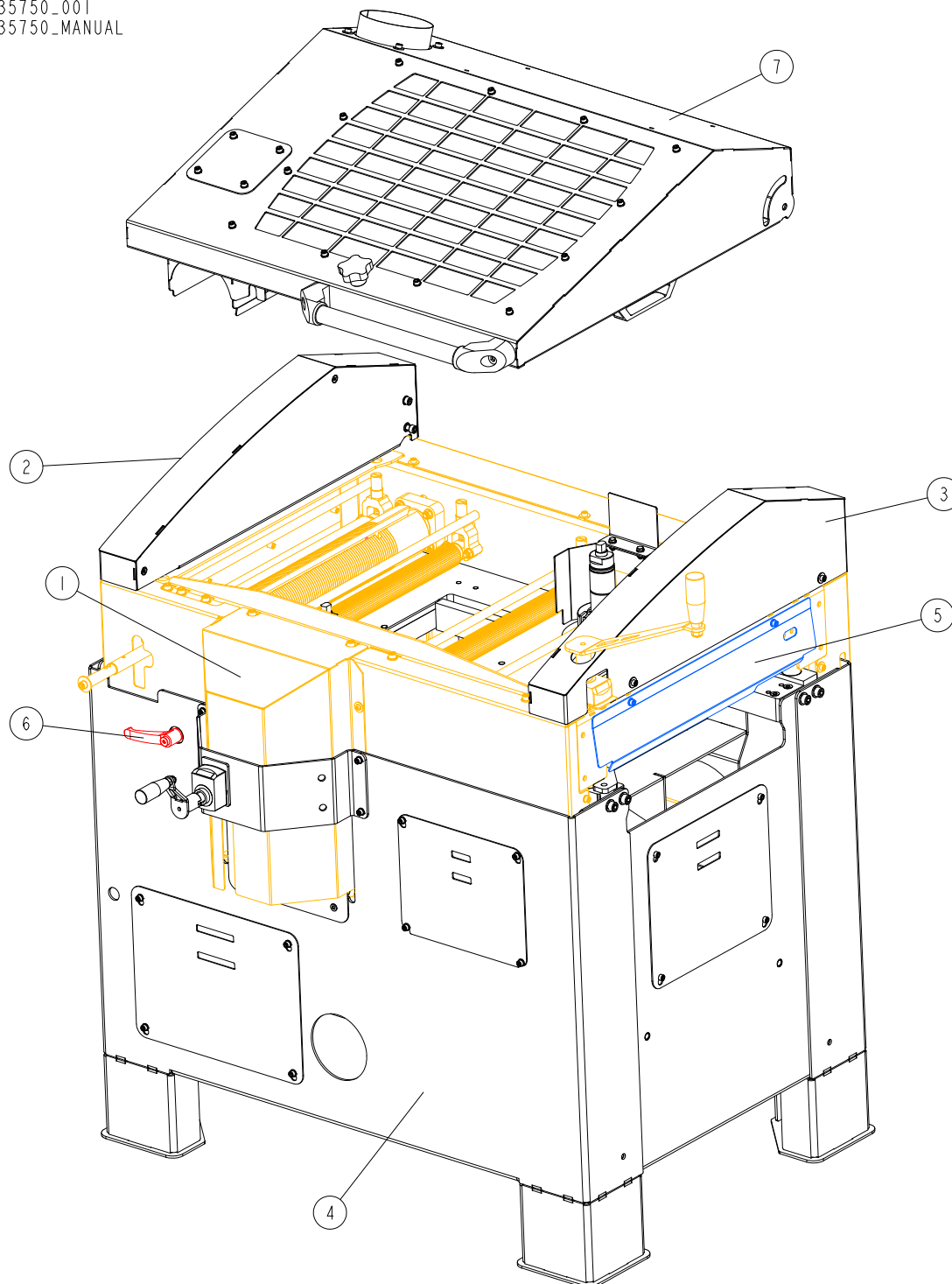
536963\_001\_B  
536963\_MANUAL



REF	DESCRIPTION (u indicates parts available in assemblies only)	PART #	QTY
-	<b>BOARD GUIDE FENCE 2- COMPLETE</b>	536963	1
1	FENCE 2	536962-1	1
2	CLAMP	536966-1	2
-	ADJUSTABLE KNOB	536965	2
3	PIN GUIDE	537001-1	1
4	KNOB PIN	536999-1	1
5	INSERT	537002	1
6	WASHER, 8,4-FLAT ZINC	F81054-1	1
7	BOLT, M8X20-8.8-B-HEX HEAD FULL THREAD Z	F81002-4	1
8	THREAD PIN M6	541455	1
9	KNURLED NUT	541454	1
10	NUT, M6 8 HEX ZINC	F81031-1	1
11	NUT, M6-8-B-HEX NYLON ZINC LOCK	F81031-2	1
12	BASE	536968-1	2
13	WASHER, 8,2 SPLIT LOCK ZINC	F81054-4	2
14	WASHER, 8,4-FLAT ZINC	F81054-1	2
15	BOLT, M8X20-8.8 SOCKET HEAD	F81002-30	2
16	SCREW, M8X40 -8.8- HEX SOCKET HEAD CAP Z	F81002-29	2

## 2.2 Mechanical Assembly

535750\_001  
 535750\_MANUAL

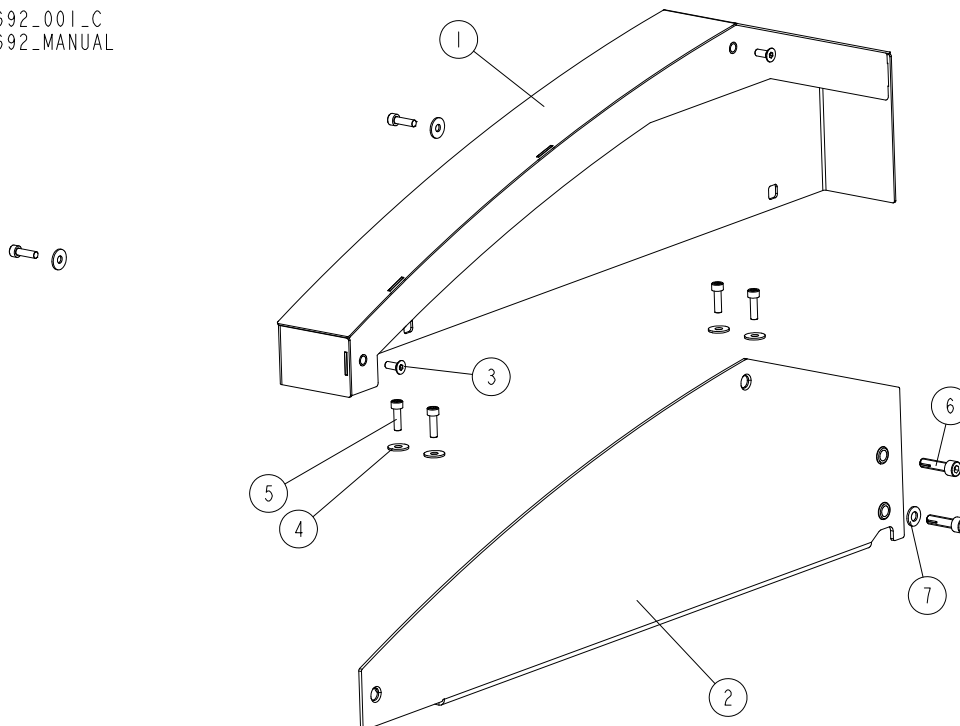


REF.	DESCRIPTION (* indicates parts available in assemblies only)	PART #	QTY
-	<b>MP360-MECHANICAL ASSEMBLY</b>	535750	1
1	INSIDE BODY - COMPLETE	535805	1
2	LEFT GUARD - COMPLETE <a href="#">See Section 2.3</a>	535692	1
3	RIGHT GUARD - COMPLETE <a href="#">See Section 2.4</a>	535694	1

REF.	DESCRIPTION (* indicates parts available in assemblies only)	PART #	QTY	
4	OUTSIDE BODY COMPLETE	535650	1	
5	MOVING PLATE ASSEMBLY <a href="#">See Section 2.5</a>	535839	1	
6	UP/DOWN LIMITER ASSEMBLY <a href="#">See Section 2.6</a>	535870	1	
7	TOP COVER ASSEMBLY <a href="#">See Section 2.7</a>	535608	1	

### 2.3 Left Guard

535692\_001\_C  
535692\_MANUAL

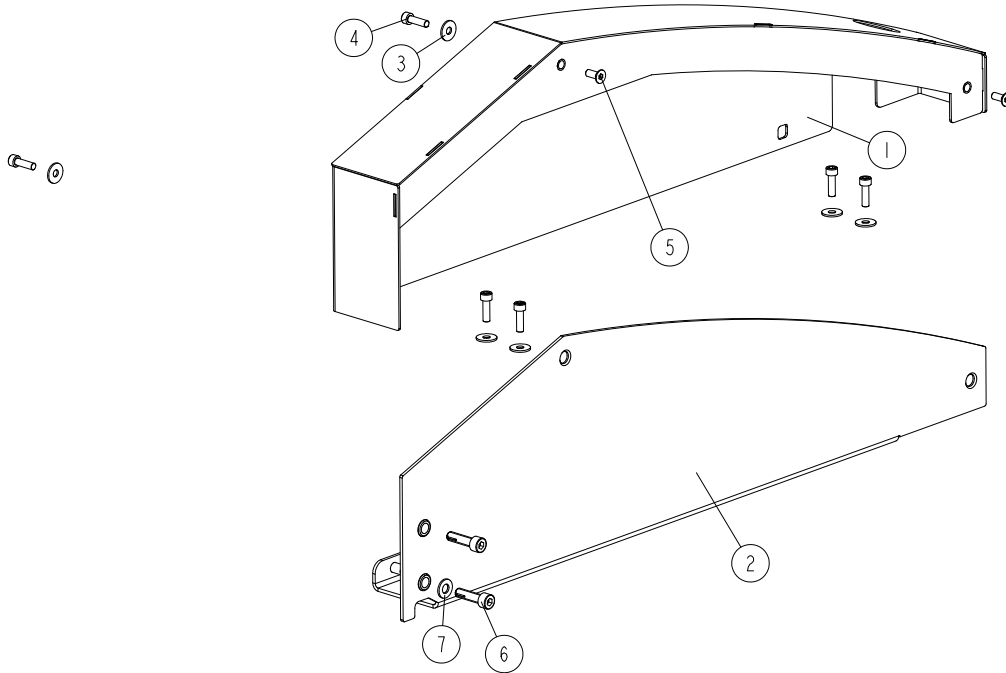


REF	DESCRIPTION (u indicates parts available in assemblies only)	PART #	QTY	
-	<b>LEFT GUARD COMPLETE</b>	535692	1	
1	LEFT GUARD WELDMENT	535690-1	1	
2	LEFT GUARD PLATE ASSEMBLY	535730	1	
3	SCREW, M6X16-10.9 DIN7991 FLAT SOCKET HE	F81001-55	2	
4	WASHER, 6.5 SPECIAL FLAT ZINC	F81053-11	6	
5	SCREW, M6X20 8.8 HEX SOCKET HEAD CAP ZIN	F81001-22	6	
6	SOCKET HEAD SCREW M8X30 DIN 912 ISO 4762	F81002-146	2	
7	WASHER, 8.4 FLAT ZINC	F81054-1	1	



## 2.4 Right Guard

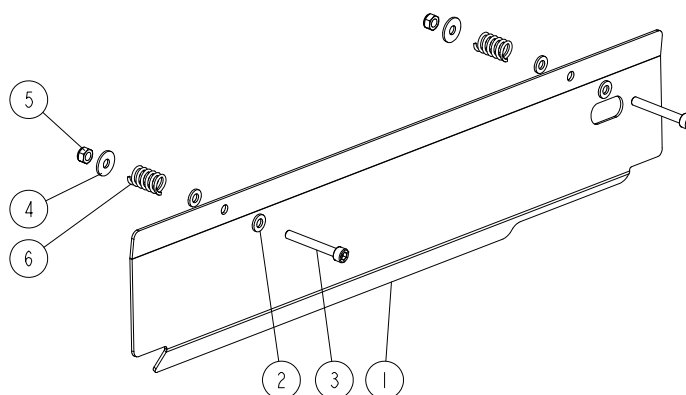
535694\_001\_C  
 535694\_MANUAL



REF	DESCRIPTION (u indicates parts available in assemblies only)	PART #	QTY	
-	<b>RIGHT GUARD COMPLETE</b>	535694	1	
1	RIGHT GUARD WELDMENT	535695-1	1	
2	RIGHT GUARD PLATE ASSEMBLY	535729	1	
3	WASHER, 6.5 SPECIAL FLAT ZINC	F81053-11	6	
4	SCREW, M6X20 8.8 HEX SOCKET HEAD CAP ZIN	F81001-22	6	
5	SCREW, M6X16-10.9 DIN7991 FLAT SOCKET HE	F81001-55	2	
6	SOCKET HEAD SCREW M8X30 DIN 912 ISO 4762	F81002-146	2	
7	WASHER, 8.4 FLAT ZINC	F81054-1	1	

## 2.5 Moving Plate Assembly

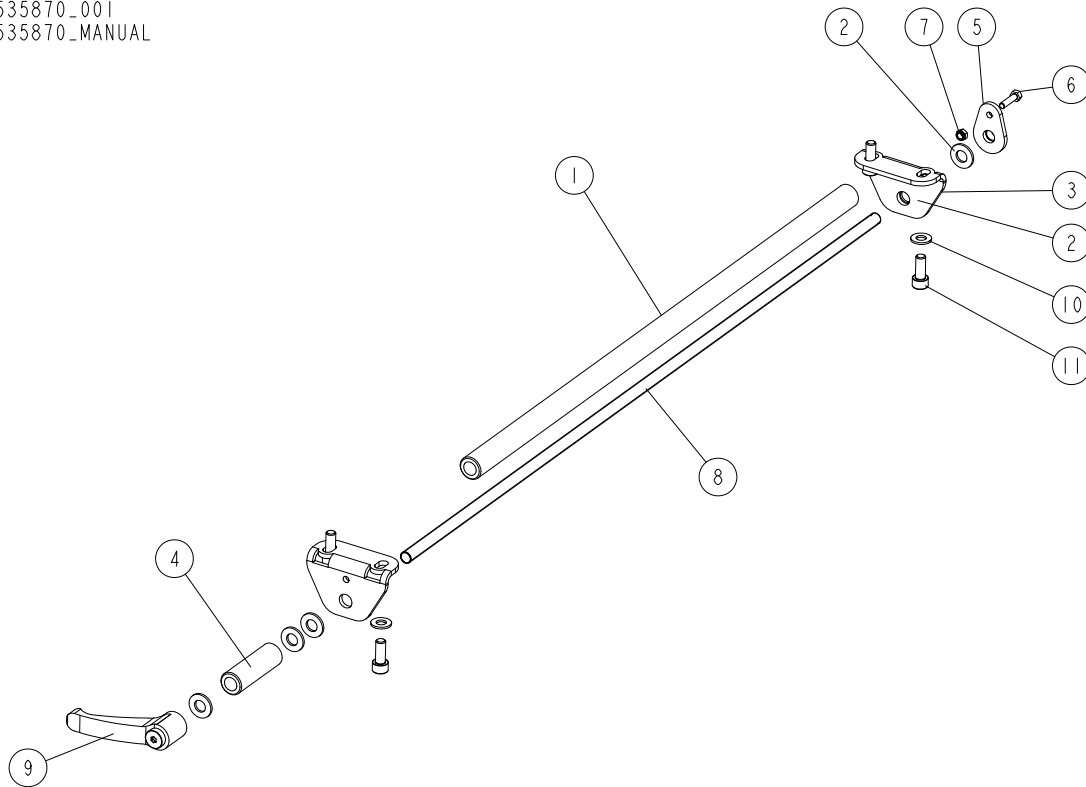
535839\_001  
 535839\_MANUAL



REF.	DESCRIPTION (* indicates parts available in assemblies only)	PART #	QTY	
-	<b>MOVING PLATE ASSEMBLY</b>	535839	1	
1	MOVING PLATE	535838-1	1	
2	WASHER 6.4 ZC DIN 126 ISO 7091	F81053-1	4	
3	SCREW M6X45 SHC ZC 8.8 DIN 912 ISO 4762	F81001-86	2	
4	WASHER 6.5 ZC FENDER DIN 9021 ISO 7093	F81053-11	2	
5	NUT M6 ZC 8 NYLOCK DIN 982 ISO 7040	F81031-2	2	
6	SPRING	533677	2	

## 2.6 Up/Down Limiter Assembly

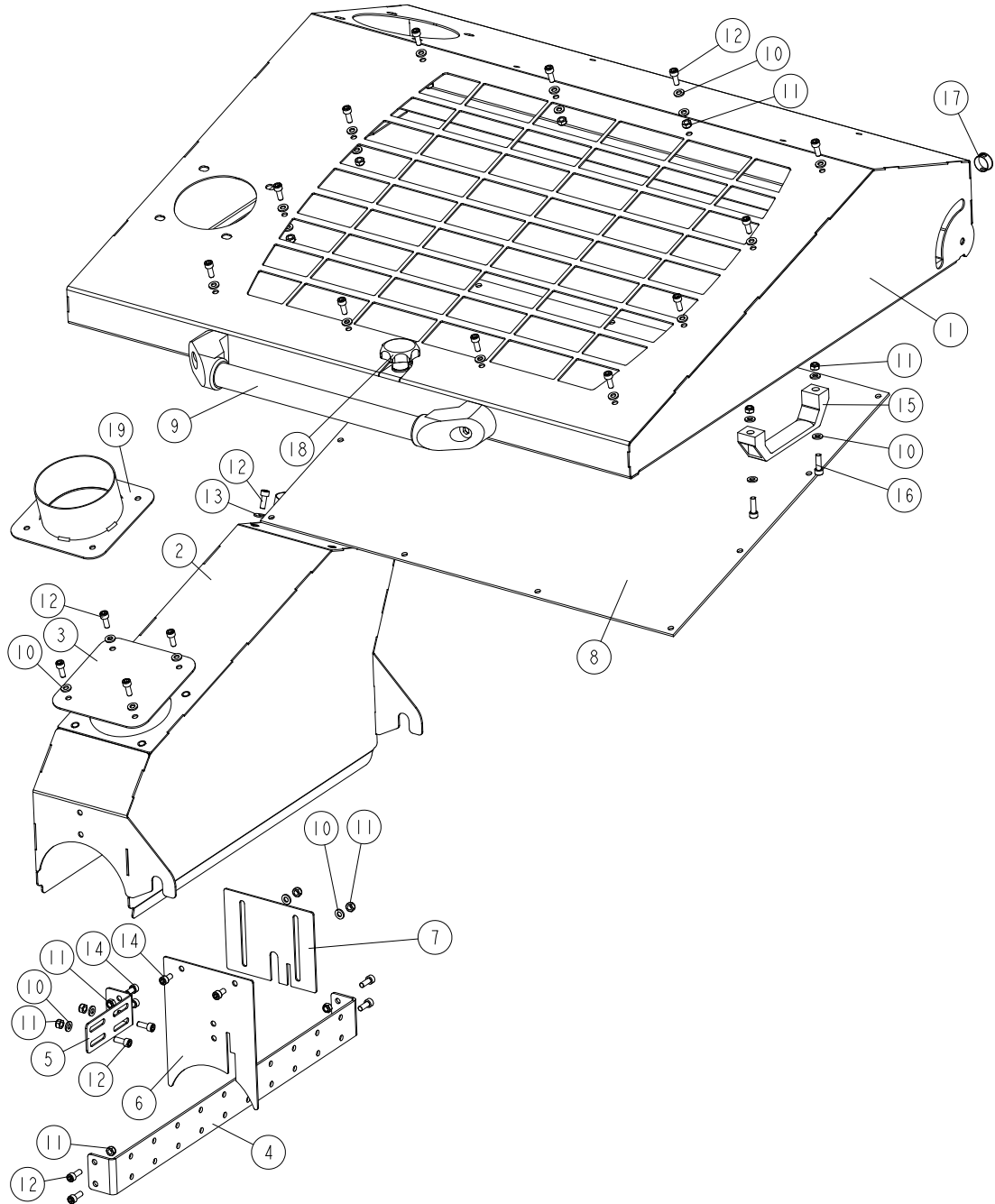
535870\_001  
535870\_MANUAL



REF.	DESCRIPTION (* indicates parts available in assemblies only)	PART #	QTY
-	<b>UP/DOWN LIMITER ASSEMBLY</b>	535870	1
1	TUBE 20X4X580	535862-1	1
2	WASHER 10.5 ZC DIN 126 ISO 7091	F81055-1	5
3	BRACKET	535863-1	2
4	BUSHING 20X4-64	535866-1	1
5	PLATE WELDMENT	535865-1	1
6	BOLT M6X20 HH FT ZC 8.8 DIN 933 ISO 4017	F81000-35	1
7	NUT, M5-8-FE/ZN5 DIN985	F81030-2	1
8	THREADED ROD M10X720	535867	1
9	ADJUSTABLE HANDLE ERZ.78 A-M10	535868	1
10	WASHER 8.4 ZC DIN 126 ISO 7091	F81054-1	4
11	SCREW M8X20 SHCS ZC 8.8 DIN 912 ISO 4762	F81002-30	4

**2.7 Top Cover Assembly**

535608\_001\_B  
 535608\_MANUAL



REF	DESCRIPTION (* indicates parts available in assemblies only)	PART #	QTY
-	<b>TOP COVER ASSEMBLY</b>	535608	1
1	TOP COVER WELDMENT	535180-1	1
2	SAWDUST OUTLET WELDMENT	535189-1	1
3	COVER PLATE	535609-1	1

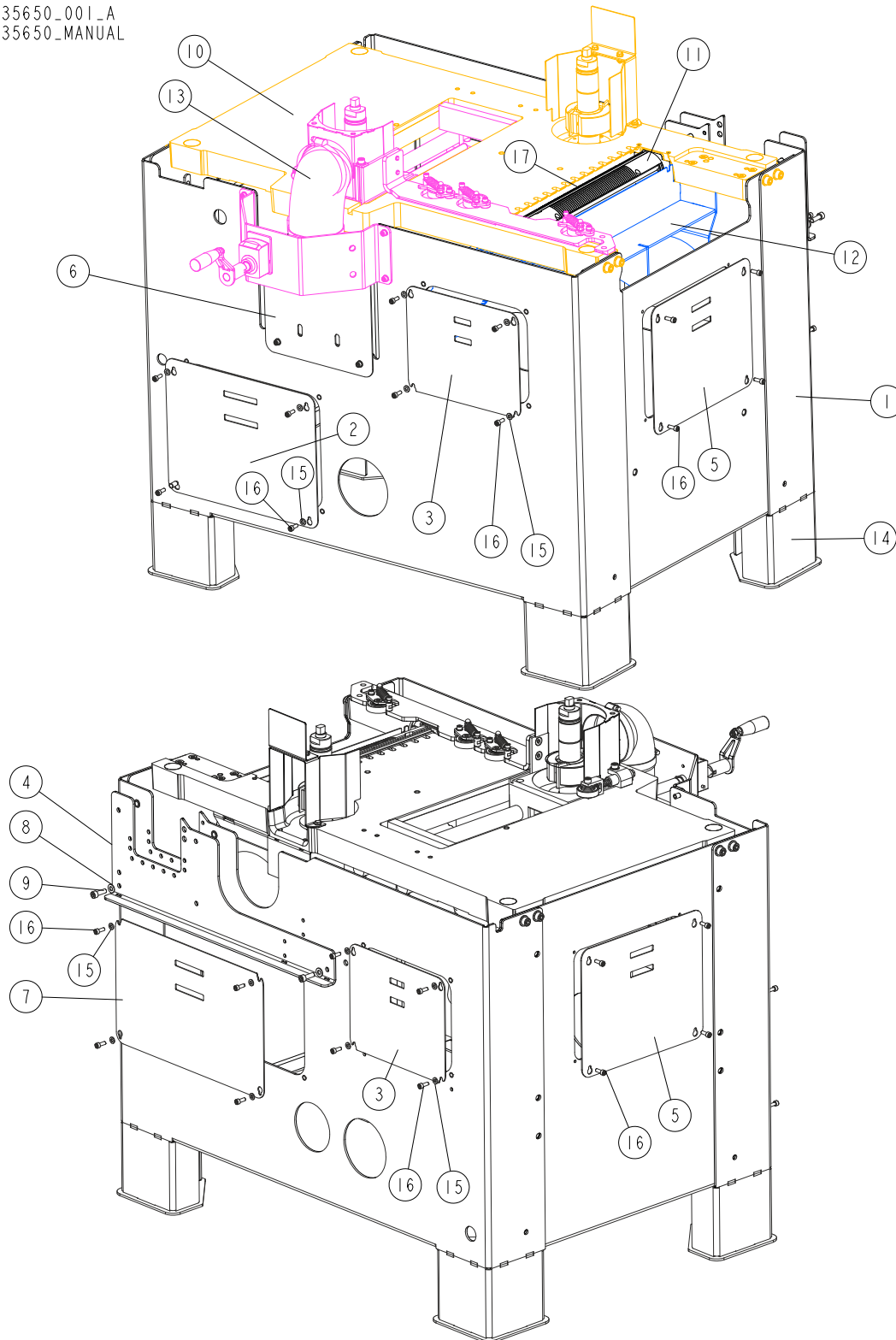
REF	DESCRIPTION (* indicates parts available in assemblies only)	PART #	QTY	
4	MOUNTING ANGLE	535193-1	1	
5	SEPARATOR CONNECTOR	535611-1	1	
6	SEPARATOR 2	535612-1	1	
7	SEPARATOR 1	535610-1	1	
8	INSPECTION WINDOW PLATE	535613	1	
9	TUBULAR HANDLE	535614	1	
10	WASHER, 6.4 FLAT ZINC	F81053-1	36	
11	NUT, M6-8-B HEX NYLON ZINC LOCK	F81031-2	24	
12	SCREW, M6X16, HEX SOCKET HEAD CAP	F81001-21	26	
13	WASHER, FLAT ZINC	F81053-11	4	
14	SCREW M6X12 SHCS ZC 8.8 DIN 912 ISO 4762	F81001-87	4	
15	HANDLE, PULL	533506	1	
16	SCREW, M6X20-8.8 HEX SOCKET HEAD CAP ZINC	F81001-22	2	
17	CAP, 20.6 HOLE HEYMAN DP-812	086811	1	
18	KNOB ASSEMBLY, STAR	533685	1	
19	ADDITIONAL CHIP OUTLET	546422-1 <sup>1</sup>	1	

<sup>1</sup> Optional equipment

## SECTION 3 OUTSIDE BODY

### 3.1 Outside Body

535650\_001\_A  
535650\_MANUAL



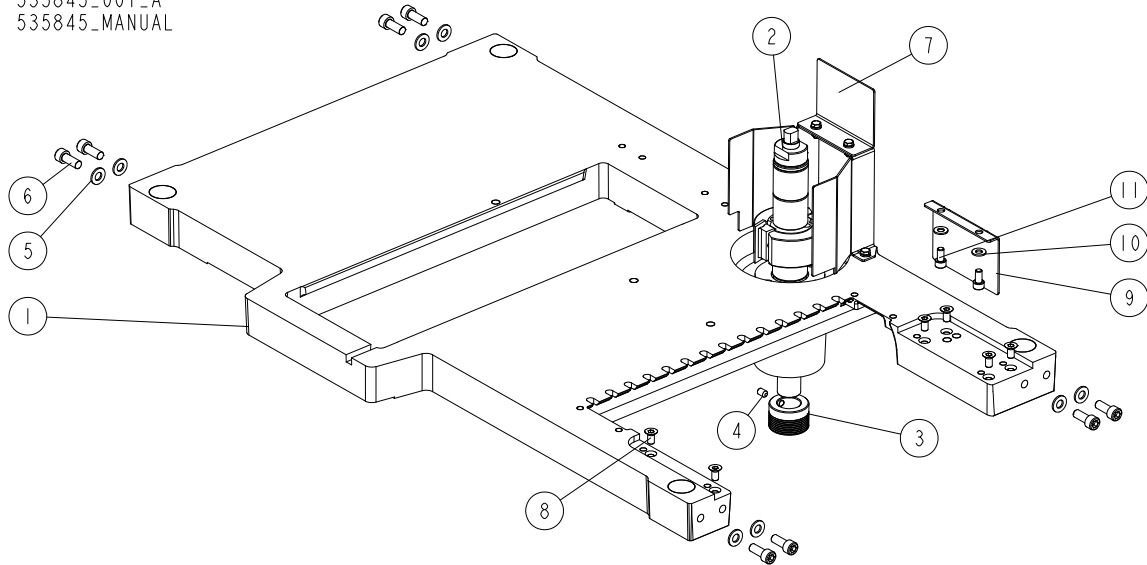
REF.	DESCRIPTION (* indicates parts available in assemblies only)	PART #	QTY	
-	<b>OUTSIDE BODY - COMPLETE</b>	535650	1	
1	OUTSIDE BODY	535615-1	1	
2	COVER 1	535659-1	1	
3	COVER 2	535642-1	2	
4	STIFFENER PLATE	535620-1	1	
5	COVER 3	535643-1	2	
6	COVER 4	535645-1	1	
7	COVER 5	535644-1	1	
8	WASHER 8.4 ZC DIN 126 ISO 7091	F81054-1	2	
9	SCREW M8X25 SHCS ZC 8.8 DIN 912 ISO 4762	F81002-21	2	
10	TABLE MP360 - COMPLETE <a href="#">See Section 3.2</a>	535845	1	
11	BOTTOM CUTTER ASSEMBLY <a href="#">See Section 3.6</a>	536960	1	
12	SAWDUST OUTLET - COMPLETE <a href="#">See Section 3.7</a>	535725	1	
13	SPINDLE MOVING ASSEMBLY <a href="#">See Section 3.8</a>	535980	1	
14	MP360 FOOT SET <a href="#">See Section 3.12</a>	535875	1	
15	WASHER 6.4 ZC DIN 126 ISO 7091	F81053-1	18	
16	SCREW M6X16 SHCS ZC 8.8 DIN 912 ISO 4762	F81001-21	26	
17	PLANING KNIFE, STRAIGHT	TPK41020MP	2	

# 3 OUTSIDE BODY

## Table

### 3.2 Table

535845\_001\_A  
535845\_MANUAL

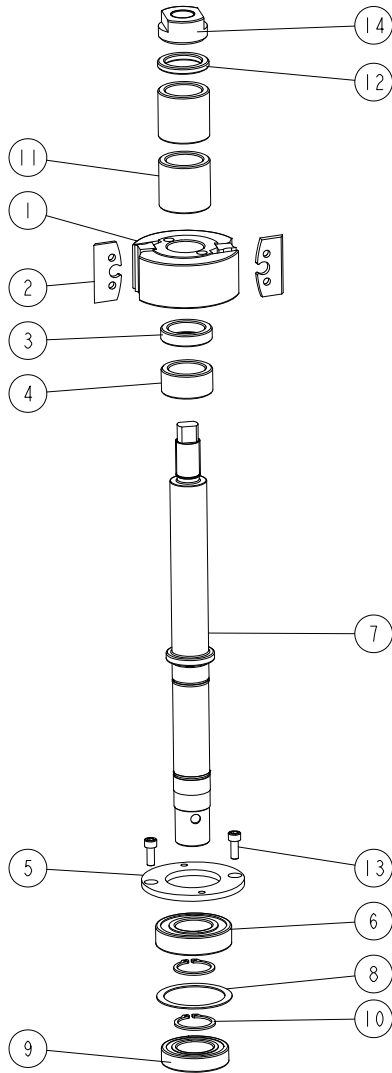


REF	DESCRIPTION (* indicates parts available in assemblies only)	PART #	QTY
-	<b>MP360 TABLE - COMPLETE</b>	535845	1
1	TABLE MP360	535710-1	1
2	RIGHT SPINDLE ASSEMBLY <a href="#">See Section 3.3</a>	535885	1
3	PULLEY, MULTI-GROOVE SMALL ALUMINIUM	533586	1
4	SCREW M8X12 HSS W/CONE POINT ZC 45H DIN 914	F81002-105	1
5	WASHER 10,5 ZC DIN 126 ISO 7091	F81055-1	8
6	SCREW M10X25 SHCS ZC 8.8 DIN 912 ISO 4762	F81003-32	8
7	CUTTER GUARD COMPLETE <a href="#">See Section 3.4</a>	535860	1
8	SCREW M8X16 HSFHS ZC 10.9 DIN7991 ISO 10642	F81002-82	6
9	LOWER GUARD	535882-1	1
10	WASHER 8,4 ZC DIN 126 ISO 7091	F81054-1	2
11	SCREW M8X16 SHCS ZC 8.8 DIN 912 ISO 4762	F81002-39	2



### 3.3 Right Spindle Assembly

535885\_001  
535885\_MANUAL



REF	DESCRIPTION (* indicates parts available in assemblies only)	PART #	QTY
-	<b>RIGHT SPINDLE ASSEMBLY</b>	535885	1
-	PROFILE HEAD 93X40X30 Z=2	TG56.2K	1
1	CUTTERHEAD	533587	1
2	KNIFE, CUTTER	533588	2
3	BUSHING, 30/42-10 ZINC-PLATED	533539-1	1
4	BUSHING, 30/42-20.2 ZINC-PLATED	533541-1	1
5	PLATE, CLAMPING	533542-1	1
6	BEARING, 6206 2RSR P6 ROLLING (FAG, NSK, SKF)	100787	1
7	SHAFT	535887	1
8	WASHER 50X61.6X1	533543	1
9	BEARING, 6006 2RSR	096191	1
10	OUTSIDE RETAINING RING Z30 PN-M/85111 DIN 471	F81090-23	2
11	BUSHING 30/42-40.2 ZINC-PLATED	535848-1	2
12	BUSHING, 30/42-5.2 ZINC-PLATED	533540-1	1

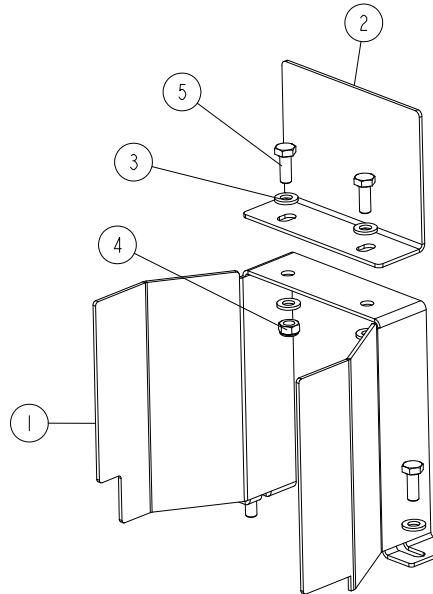
**3****OUTSIDE BODY***Right Spindle Assembly*

---

REF	DESCRIPTION (* indicates parts available in assemblies only)	PART #	QTY	
13	SCREW M6X16 SHCS ZC 8.8 DIN 912 ISO 4762	F81001-21	2	
14	NUT, M20X1.5	535886-1	1	
	<b>SHIM, 30/42-2 FE/ZN5 DIN 988</b>	F81069-1	A/R	
	<b>SHIM, 30/42-1 FE/ZN5 DIN 988</b>	F81069-2	A/R	
	<b>SHIM, 30/42-0.5 FE/ZN5 DIN 988</b>	F81069-3	A/R	
	<b>SHIM, 30/42-0.3 FE/ZN5 DIN 988</b>	F81069-4	A/R	

### 3.4 Cutter Guard

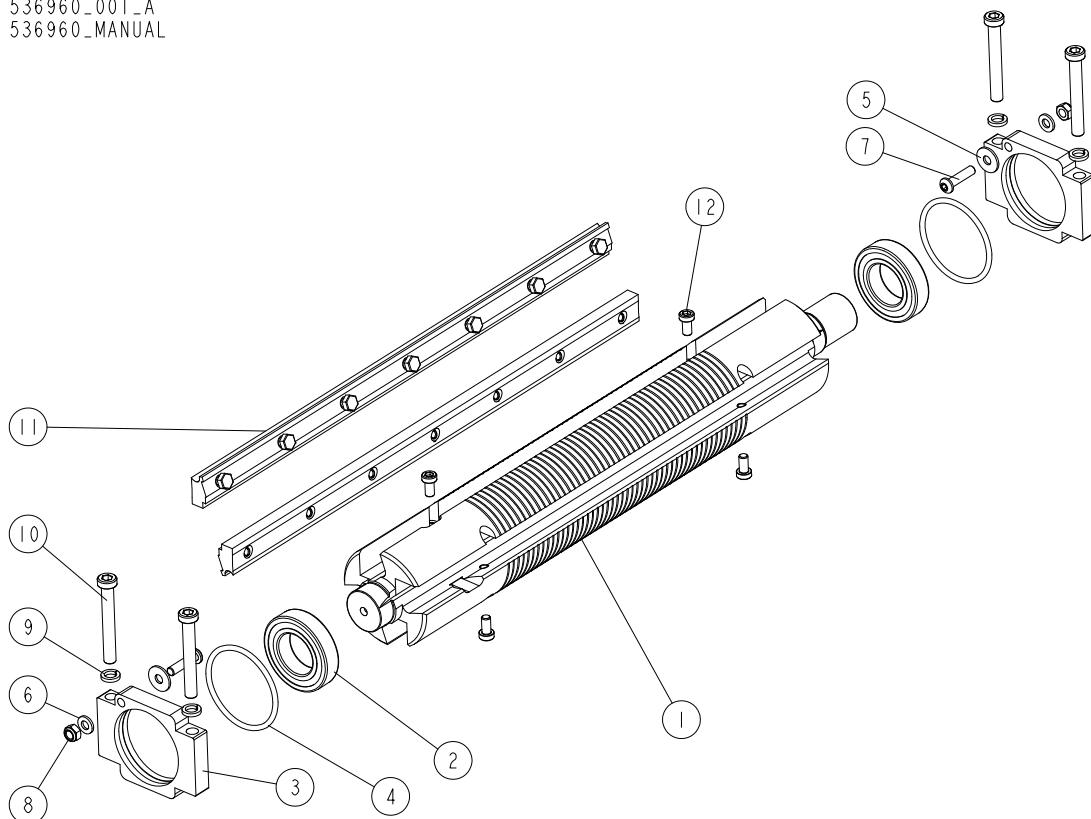
535860\_001  
535860\_MANUAL



REF.	DESCRIPTION (* indicates parts available in assemblies only)	PART #	QTY
-	<b>CUTTER GUARD - COMPLETE</b>	535860	1
1	CUTTER GUARD	535859-1	1
2	TOP GUARD	535861-1	1
3	WASHER 6.4 ZC DIN 126 ISO 7091	F81053-1	6
4	NUT M6 ZC 8 NYLOCK DIN 982 ISO 7040	F81031-2	2
5	BOLT M6X16 HH ZC FT 8.8 DIN 933	F81001-15	4

### 3.5 Bottom Cutter

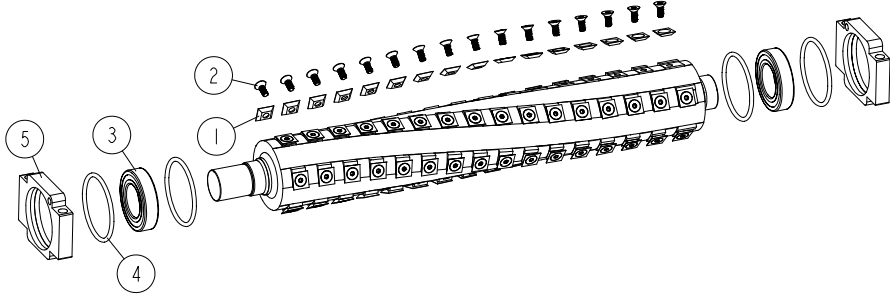
536960\_001\_A  
536960\_MANUAL



REF.	DESCRIPTION (* indicates parts available in assemblies only)	PART #	QTY
-	<b>BOTTOM CUTTER ASSEMBLY</b>	536960	1
1	MAIN SHAFT	360-840	1
2	BEARING, 6006 2RSR	096191	2
3	BEARING HOUSING 1	536958-1	2
4	O-RING	536959	2
5	WASHER 6.5 ZC FENDER DIN 9021 ISO 7093	F81053-11	2
6	WASHER 6.4 ZC DIN 126 ISO 7091	F81053-1	2
7	HEXAGON SOCKET BUTTON HED SCROW M6X25 ZC 10.9 ISO 7380	F81001-109	2
8	NUT M6 ZC 8 NYLOCK DIN 982 ISO 7040	F81031-2	2
9	WASHER 8.2 ZC SPRING LOCK DIN 127	F81054-4	4
10	SCREW M8X60 LHSCS 8.8 DIN 7984	F81002-41	4
11	MOUNTING WEDGES	241-060	1
12	SCREW M6X12 LSHCS 10.9 DIN 7984	F81001-80	4

**3.6 Bottom Helical Cutterhead**

THH360BC\_001  
 THH360BC-S



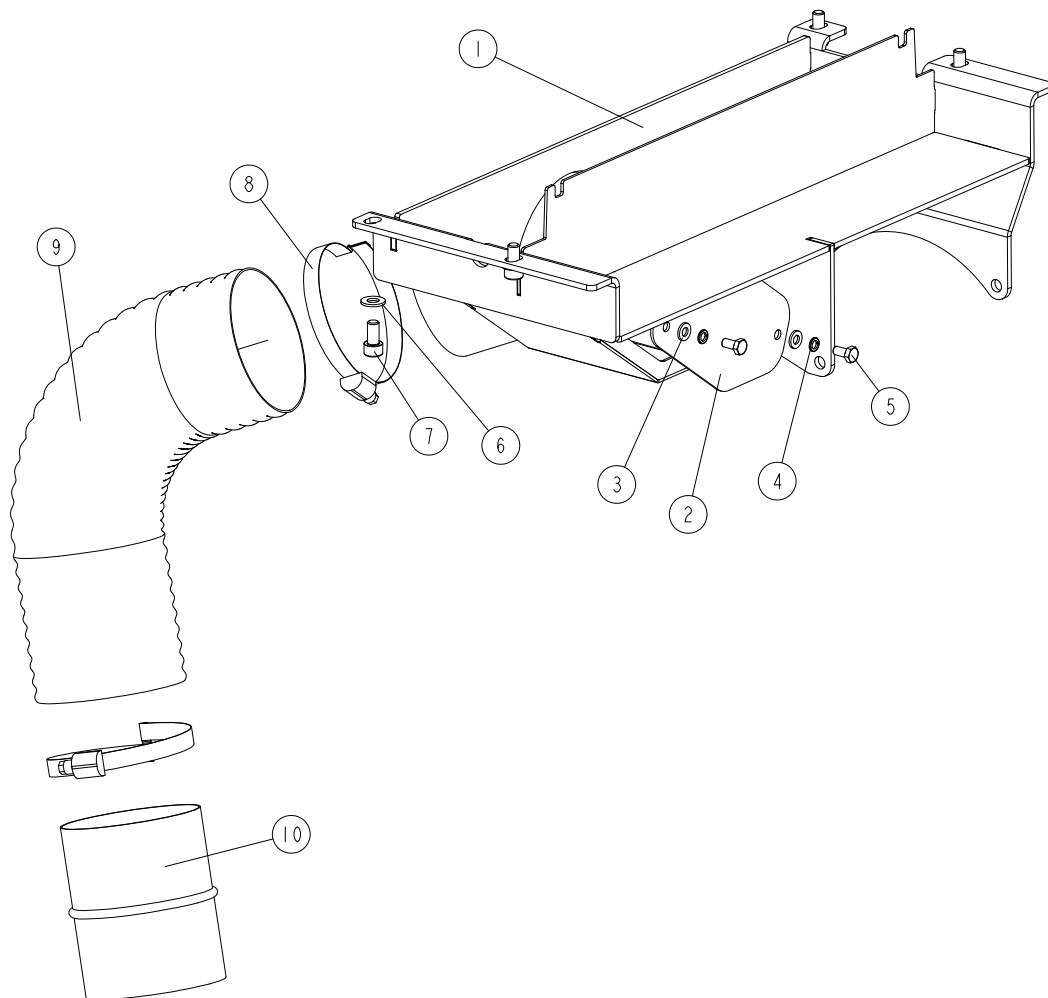
REF	DESCRIPTION (u indicates parts available in assemblies only)	PART #	QTY	
-	<b>KIT, MP360 HELICAL BOTTOM CUTTERHEAD</b>	THH360BC-S	1	
-	CUTTERHEAD, HELICAL BOTTOM THH360BC	THH360BC	1	
1	INSERT, REPLACEMENT CARBIDE	TIK19HM	80	
2	SCREW, 10-32X1/2 FH BO; TORX PLUS	F05004-325	80	
3	BEARING, 6006 2RSR	096191	2	
4	O-RING	536959	4	
5	HOUSING, BEARING	564942-1	2	

# 3 OUTSIDE BODY

## Sawdust Outlet

### 3.7 Sawdust Outlet

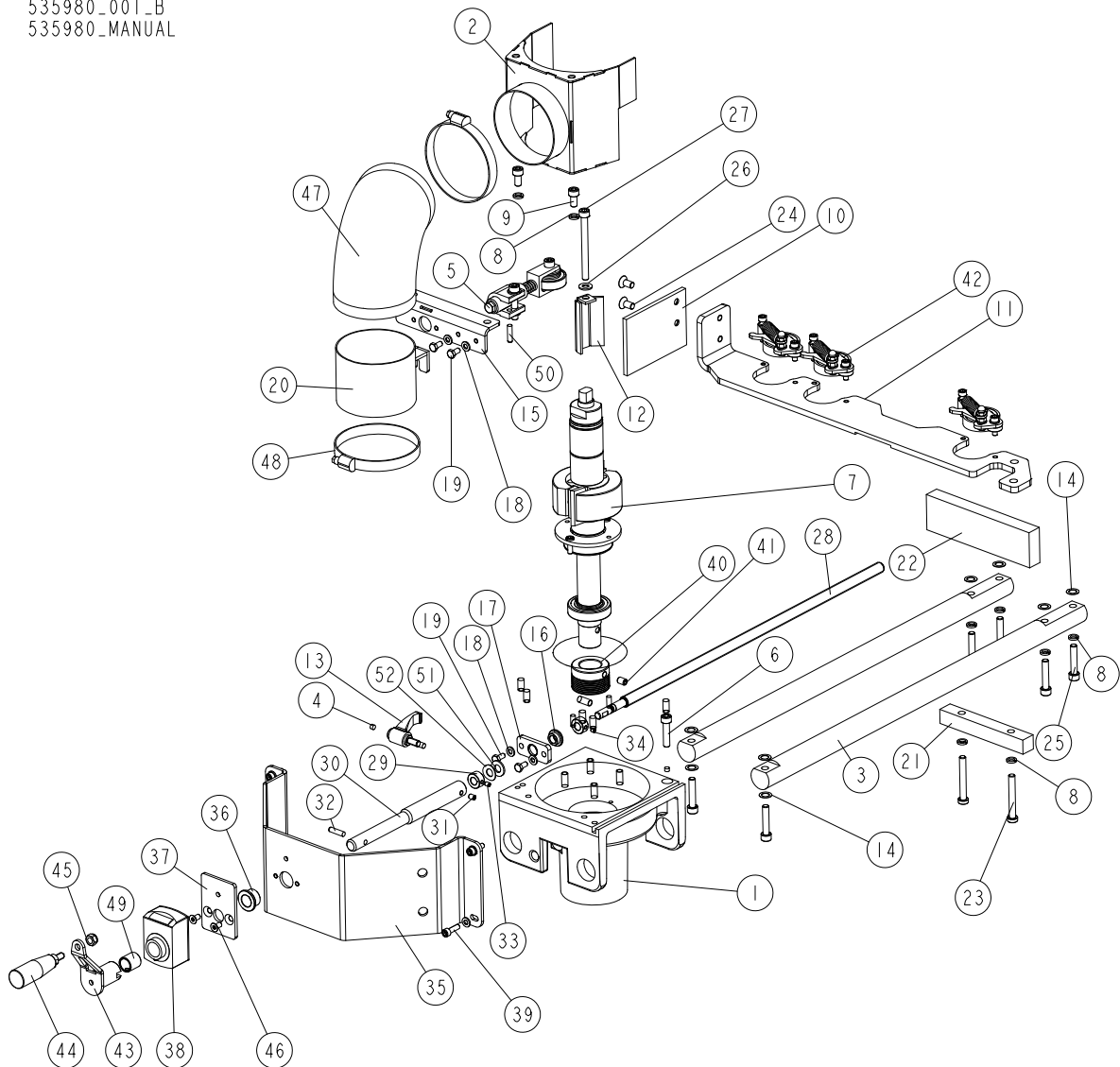
535725\_001\_A  
535725\_MANUAL



REF	DESCRIPTION (* indicates parts available in assemblies only)	PART #	QTY
-	<b>SAWDUST OUTLET - COMPLETE</b>	535725	1
1	SAWDUST OUTLET WELDMENT	535724-1	1
2	COVER	535726-1	1
3	WASHER 6.4 ZC DIN 126 ISO 7091	F81053-1	2
4	WASHER 6.1 ZC SPRING LOCK DIN 127	F81053-3	2
5	BOLT M6X12 HH ZC FT 8.8 DIN 933	F81001-7	2
6	WASHER 8.4 ZC DIN 126 ISO 7091	F81054-1	4
7	SCREW M8X16 SHCS ZC 8.8 DIN 912 ISO 4762	F81002-39	4
8	HOSE CLAMP, 90-110MM	F81095-11	2
9	SAWDUST OUTLET HOSE MASTER CLIP PUR DN10	546803	1
10	CONNECTOR DN100	546804	1

## 3.8 Spindle Moving Assembly

535980\_001\_B  
535980\_MANUAL



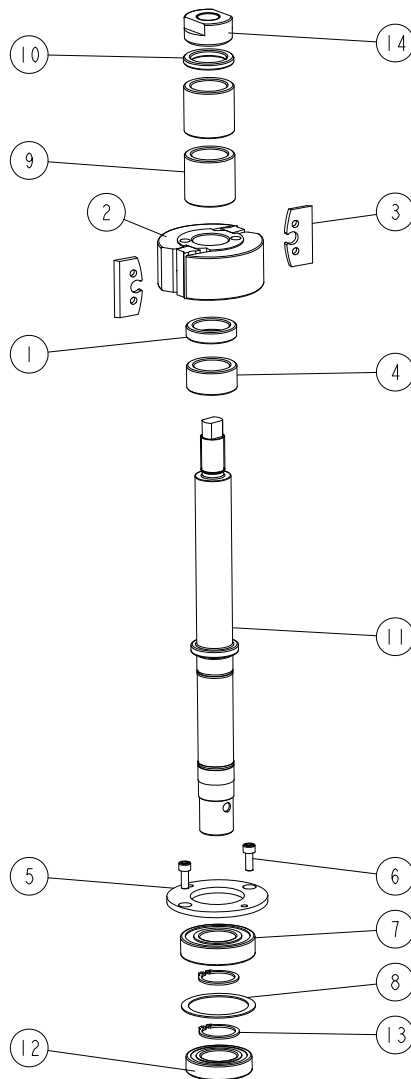
Ref	DESCRIPTION (* indicates parts available in assemblies only)	PART #	QTY
-	<b>SPINDLE MOVING ASSEMBLY</b>	535980	1
1	SPINDLE MOUNT BASE	546837-1	1
2	SAWDUST OUTLET WELDMENT	535979-1	1
3	LEFT SPINDLE GUIDE	535981	2
4	SLIDE	535987	2
5	CLAMP ROLLER ASSEMBLY II <a href="#">See Section 3.10</a>	533550	1
6	SCREW M8X35 SHCS ZC 8.8 DIN 912 ISO 4762	F81002-58	1
7	LEFT SPINDLE ASSEMBLY <a href="#">See Section 3.9</a>	535846	1
8	WASHER 8,2 ZC SPRING LOCK DIN 127	F81054-4	8
9	SCREW M8X16 SHCS ZC 8.8 DIN 912 ISO 4762	F81002-39	2
10	MOUNT PLATE	537027-1	1
11	MATERIAL GUIDE BAR	535982-1	1
12	GUIDE MOUNT BRACKET	535984-1	1

Ref	DESCRIPTION (* indicates parts available in assemblies only)	PART #	QTY	
13	ADJUSTABLE HANDLE ERZ.63 P-M8X16	535988	1	
14	THIN WASHER 10/16-0.5	535990	12	
15	SCREW MOUNTING PLATE	535989-1	1	
16	SELF LUBRICATING BEARING, AMES N10/N16/N22-8	541372	1	
17	SLIDE BUSHING PLATE	535991-1	1	
18	WASHER 6,4 ZC DIN 126 ISO 7091	F81053-1	8	
19	BOLT M6X12 HH ZC FT 8.8 DIN 933	F81001-7	4	
20	SAWDUST OUTLET CONNECTOR	535995-1	1	
21	GUIDE BLOCK 1	536956-1	1	
22	GUIDE BLOCK 2	536957-1	1	
23	SCREW M8X60 LHSCS 8.8 DIN 7984	F81002-41	2	
24	SCREW M8X16 HSFHS ZC 8.8 DIN7991 ISO10642	F81002-115	2	
25	SCREW M8X40 SHCS ZC 8.8 DIN 912 ISO 4762	F81002-29	6	
26	WASHER 8,4 ZC DIN 126 ISO 7091	F81054-1	1	
27	SCREW M8X90 SHCS ZC 8.8 DIN 912 ISO 4762	F81002-44	1	
-	TRAPEZOIDAL SCREW ASSEMBLY	536981	1	
28	CUTTER TRAPEZOIDAL SCREW	535996	1	
29	CONNECTOR 1	535997-1	2	
30	CONNECTOR 2	535998-1	1	
31	PIN, 4X24 ZINC ROLL	F81044-13	1	
32	DOWEL PIN 6M6X12 DIN 7 ISO 2338	F81045-5	1	
33	SCREW M5X8 45H HSS W/DOG POINT ZC DIN 915 ISO4028	F81014-15	1	
34	SCREW M5X5 45H W/FLAT POINT ZC DIN 913 ISO 4026	F81014-14	1	
35	SMALL SIDE COVER	535646-1	1	
36	SELF LUBRICATING BEARING, AMES N16/N22/N28-15	541373	1	
37	POSITION INDICATOR MOUNT PLATE	536000-1	1	
38	ADJUSTABLE POSITION INDICATOR METRIC	536952	1	
39	SCREW M6X20 SHCS ZC 8.8 DIN 912 ISO 4762	F81001-22	4	
40	PULLEY, MULTI-GROOVE SMALL ALUMINIUM	533586	1	
41	SCREW M8X12 HSS W/CONE POINT ZC 45H DIN 914	F81002-105	1	
42	CLAMP ROLLER COMPLETE <a href="#">See Section 3.11</a>	536980	3	
-	HANDLE ASSEMBLY	536955	1	
43	HANDLE WELDMENT	536953-1	1	
44	REVOLVING GRIP	533505	1	
45	NUT M8 ZC 8 NYLOCK DIN 982 ISO 7040	F81032-2	1	
46	SCREW M6X12 HSFH ZC 10.9 DIN 7991 ISO 10642	F81001-54	2	
47	SAWDUST OUTLET HOSE MASTER CLIP PUR DN100 L=600 [MM]	535883	1	
48	WORM CLAMP 90-110	F81095-8	2	
49	REDUCING SLEEVE	541138	1	
50	DOWEL PIN 6M6X12 DIN 7 ISO 2338	F81045-5	1	
51	WASHER 10,5 ZC DIN 126 ISO 7091	F81055-1	1	
52	DIN 137 B WAVE SPRING WASHER 10.5	F81055-18	1	



### 3.9 Left Spindle Assembly

535846\_001\_A  
535846\_MANUAL



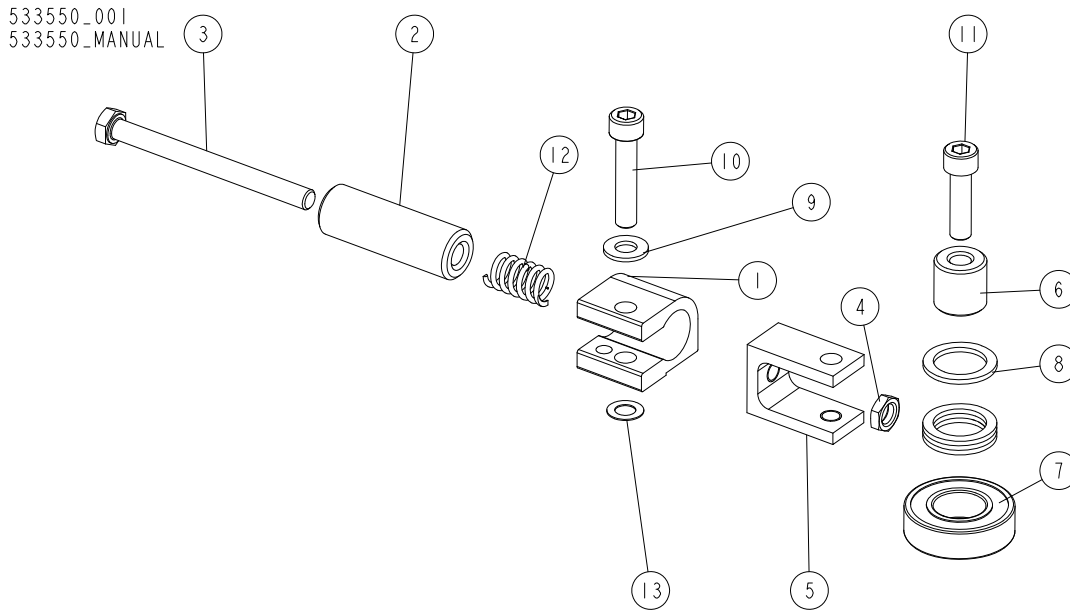
REF	DESCRIPTION (* indicates parts available in assemblies only)	PART #	QTY
-	<b>LEFT SPINDLE ASSEMBLY</b>	535846	1
1	BUSHING, 30/42-10 ZINC-PLATED	533539-1	1
-	CUTTERHEAD, TB90-92 STEEL	240-010	1
2	CUTTERHEAD	533587	1
3	KNIFE, CUTTER	533588	2
4	BUSHING, 30/42-20.2 ZINC-PLATED	533541-1	1
5	PLATE, CLAMPING	533542-1	1
6	SCREW M6X16 SHCS ZC 8.8 DIN 912 ISO 4762	F81001-21	2
7	BEARING, 6206 2RSR P6 ROLLING (FAG, NSK, SKF)	100787	1
8	WASHER 50X61.6X1	533543	1
9	BUSHING 30/42-40.2 ZINC-PLATED	535848-1	2
10	BUSHING, 30/42-5.2 ZINC-PLATED	533540-1	1
11	SHAFT	535847	1
12	BEARING, 6006 2RSR	096191	1

**3****OUTSIDE BODY***Left Spindle Assembly*

---

REF	DESCRIPTION (* indicates parts available in assemblies only)	PART #	QTY	
13	OUTSIDE RETAINING RING Z30 PN-M/85111 DIN 471	F81090-23	2	
14	NUT, M20X1.5 LEFT	533538-1	1	
	<b>SHIM, 30/42-2 FE/ZN5 DIN 988</b>	F81069-1	A/R	
	<b>SHIM, 30/42-1 FE/ZN5 DIN 988</b>	F81069-2	A/R	
	<b>SHIM, 30/42-0.5 FE/ZN5 DIN 988</b>	F81069-3	A/R	
	<b>SHIM, 30/42-0.3 FE/ZN5 DIN 988</b>	F81069-4	A/R	

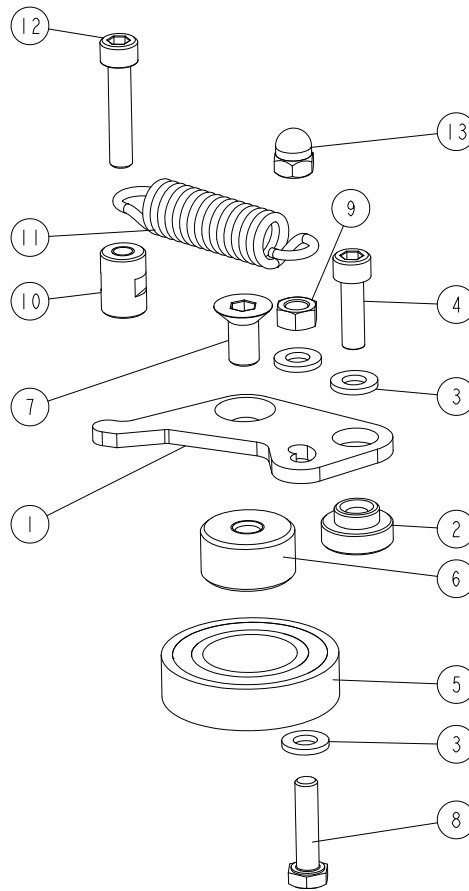
### 3.10 Clamp Roller Assembly II



REF	DESCRIPTION (* indicates parts available in assemblies only)	PART #	QTY
-	<b>CLAMP ROLLER ASSEMBLY II</b>	533550	1
1	CONNECTOR, ALUMINIUM	533551-1	1
2	BUSHING, 8.5/20-60 ZINC-PLATED	533553-1	1
3	BOLT M8X90 HH ZC FT 8.8 DIN 933	F81002-16	1
4	NUT, M8-04-FE/ZN ISO4035 HEX THIN	F81032-8	1
5	CONNECTOR, ALUMINIUM	533552	1
6	BUSHING, 8.2/20-20	533554-1	1
7	BEARING, 6004 2RS CX ROLLING	093868	1
8	WASHER, 28/20-2	533555	4
9	WASHER 8,4 ZC DIN 126 ISO 7091	F81054-1	1
10	SCREW M8X40 SHCS ZC 8.8 DIN 912 ISO 4762	F81002-29	1
11	SCREW M8X30 SHCS ZC 8.8 DIN 912 ISO 4762	F81002-31	1
12	SPRING, 12X25XN2	533556	1
13	RING SHIM 14/8-05 DIN 988	F81055-16	1

**3.11 Clamp Roller Assembly**

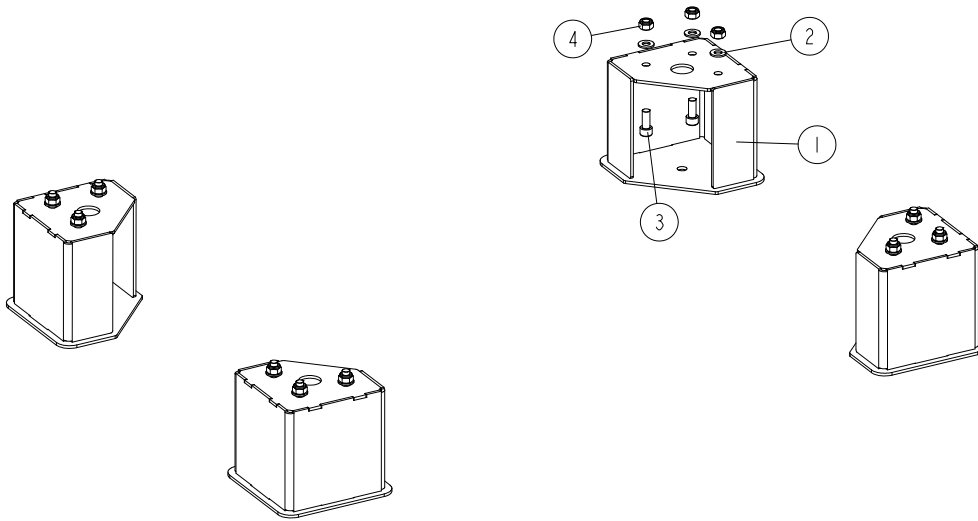
536980\_001  
536980\_MANUAL



REF	DESCRIPTION (* indicates parts available in assemblies only)	PART #	QTY
-	<b>CLAMP ROLLER ASSEMBLY</b>	536980	1
1	BRACKET, BEARING MOVABLE	533525-1	1
2	BUSHING, 6.2/12-10 FLANGED 19-6	533632	1
3	WASHER 6.4 ZC DIN 126 ISO 7091	F81053-1	3
4	SCREW M6X20 SHCS ZC 8.8 DIN 912 ISO 4762	F81001-22	1
5	BEARING 6005 2RS	089652	1
6	BUSHING, M8/25-13.5 ZINC-PLATED	533529-1	1
7	SCREW M8X16 HSFHS ZC 10.9 DIN7991 ISO 10642	F81002-82	1
8	BOLT M6X25 HH ZC FT 8.8 DIN 933	F81001-3	1
9	NUT M6 ZC 8 DIN 934	F81031-1	1
10	BUSHING, M6/12-17 ZINC-PLATED	533633-1	1
11	SPRING, 15X65X2.5	533571	1
12	SCREW M6X30 SHCS ZC 8.8 DIN 912 ISO 4762	F81001-42	1
13	HEX DOMED CAP NUT M6 ZC 6 DIN 1587	F81032-20	1

### 3.12 Foot Set

535875\_001  
535875\_MANUAL

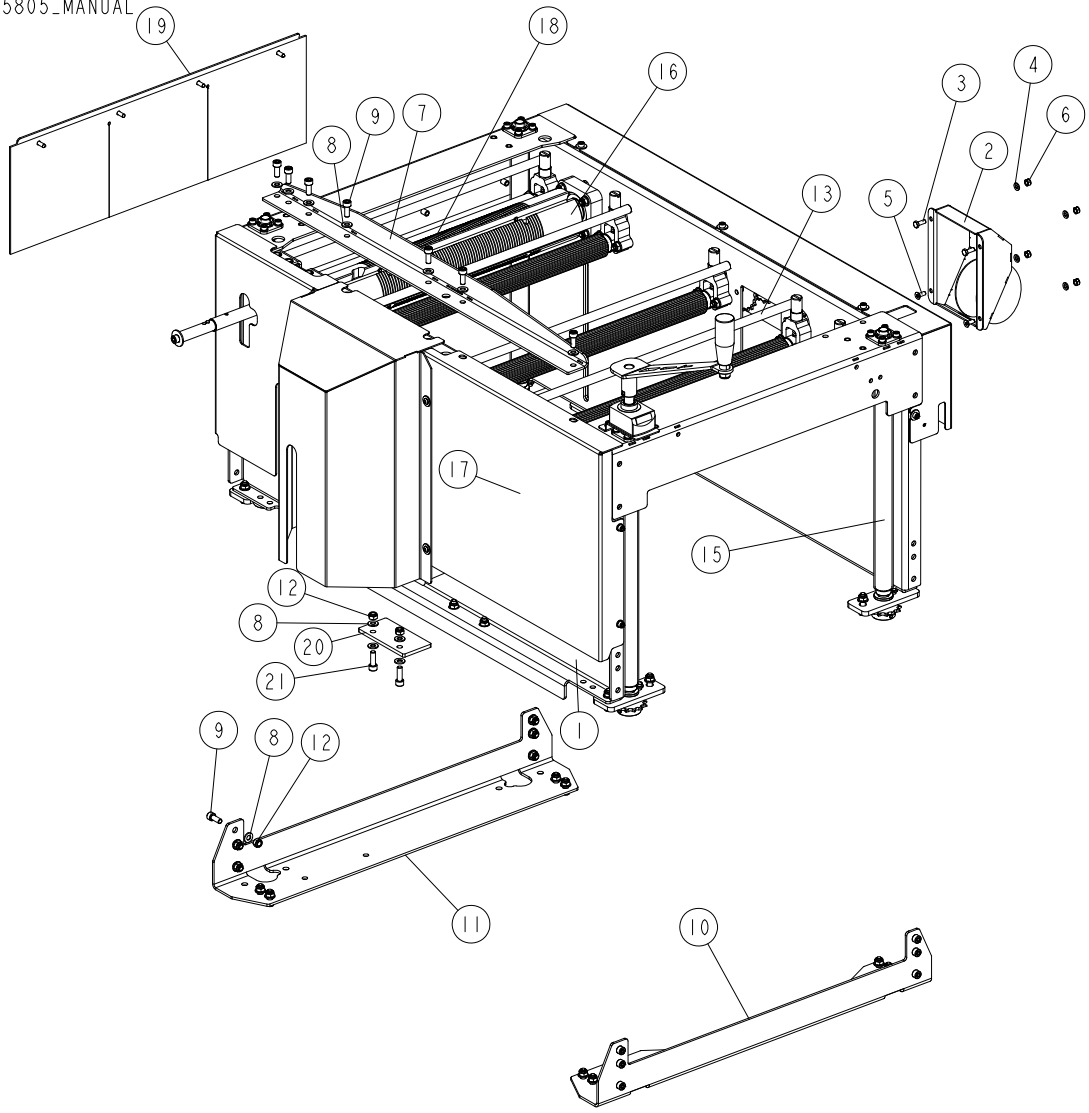


REF	DESCRIPTION (u indicates parts available in assemblies only)	PART #	QTY	
-	<b>MP360 FOOT SET</b>	535875	1	
1	MP360 FOOT	535623-1	4	
2	WASHER, 10.5 FLAT ZINC	F81055-1	12	
3	SCREW, M10X25 8.8 HEX SOCKET HEAD CAP ZI	F81003-32	12	
4	NUT, M10-8-B HEX NYLON ZINC LOCK	F81033-1	12	

**SECTION 4 INSIDE BODY**

**4.1 Inside Body**

535805\_001\_A  
 535805\_MANUAL

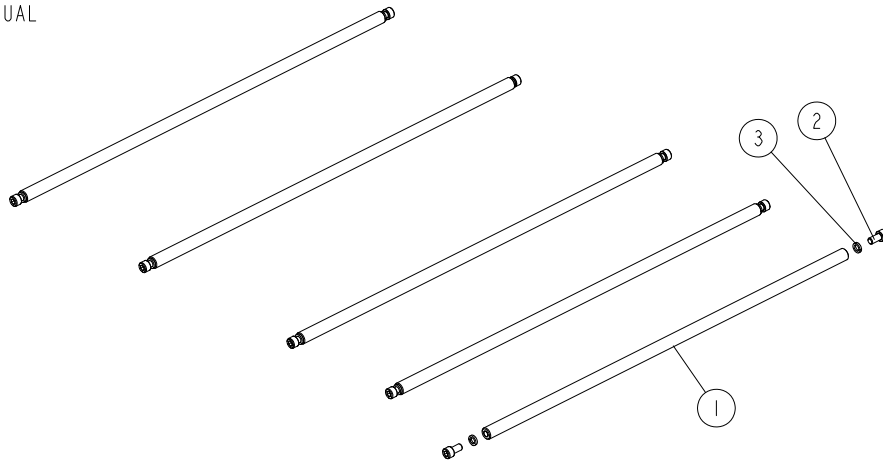


Ref	DESCRIPTION (* indicates parts available in assemblies only)	PART #	QTY
-	<b>INSIDE BODY COMPLETE</b>	535805	1
1	INSIDE BODY	535655-1	1
2	SAWDUST CHUTE WELDMENT	535630-1	1
3	BOLT M6X16 HH ZC FT 8.8 DIN 933	F81001-15	2
4	WASHER 6,4 ZC DIN 126 ISO 7091	F81053-1	4
5	SCREW M6X16 HSFHS ZC 10.9 DIN 7991	F81001-55	2
6	NUT M6 ZC 8 NYLOCK DIN 982 ISO 7040	F81031-2	4
7	COVER LOCK PLATE	535691-1	1
8	WASHER 8,4 ZC DIN 126 ISO 7091	F81054-1	31
9	SCREW M8X20 SHCS ZC 8.8 DIN 912 ISO 4762	F81002-30	27
10	RIGHT MOUNTING PLATE	535836-1	1

Ref	DESCRIPTION (* indicates parts available in assemblies only)	PART #	QTY	
11	LEFT MOUNTING PLATE	535837-1	1	
12	NUT M8 ZC 8 NYLOCK DIN 982 ISO 7040	F81032-2	22	
13	ROD SET <a href="#">See Section 4.2</a>	535835	1	
14	MP360 FEED ASSEMBLY <a href="#">See Section 4.3</a>	535831	1	
15	UP/DOWN SYSTEM <a href="#">See Section 4.7</a>	535960	1	
16	UPPER CUTTER ASSEMBLY <a href="#">See Section 4.9</a>	536961	1	
17	GUARD SET <a href="#">See Section 4.11</a>	535744	1	
18	KNIFE SET, PLANING	TPK510.25 MP	1	
19	GUARD COMPLETE <a href="#">See Section 4.10</a>	535850	1	
20	LIMITER	537662-1	1	
21	SCREW M8X25 SHCS ZC 8.8 DIN 912 ISO 4762	F81002-21	2	

**4.2 Rods**

535835\_001  
535835\_MANUAL

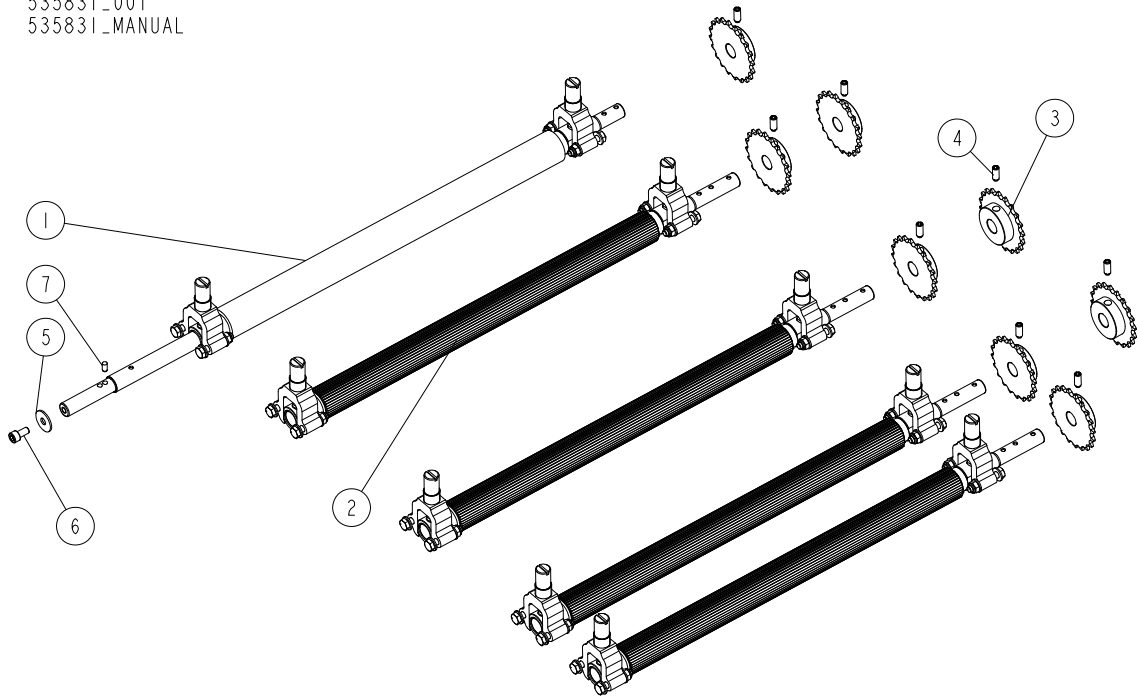


REF.	DESCRIPTION (* indicates parts available in assemblies only)	PART #	QTY	
-	ROD SET	535835	1	
1	ROD 15X592	535834-1	5	
2	SCREW M8X16 SHCS ZC 8.8 DIN 912 ISO 4762	F81002-39	10	
3	WASHER 8.2 ZC SPRING LOCK DIN 127	F81054-4	10	



4.3 Feed Assembly

535831\_001  
535831\_MANUAL



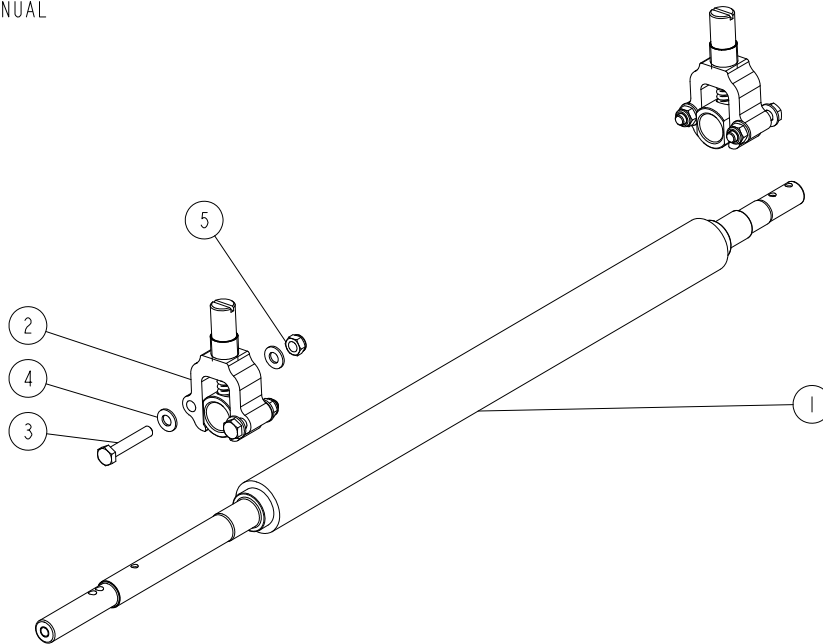
REF.	DESCRIPTION (* indicates parts available in assemblies only)	PART #	QTY
-	<b>MP360 FEED ASSEMBLY</b>	535831 <sup>1</sup>	1
1	SHAFT WITH PROTECTIVE COVER - COMPLETE <a href="#">See Section 4.4</a>	535740	1
2	DRIVE SHAFT ASSEMBLY <a href="#">See Section 4.6</a>	535732	4
3	SPROCKET Z=20; 1/2"X 3/16" (CHAIN 083-1)	535832	8
4	SCREW M8X20 HSS W/DOG POINT ZC 45H DIN 915 ISO 4028	F81002-77	8
5	WASHER 9/28-2	535853-1	1
6	SCREW M8X16 SHCS ZC 8.8 DIN 912 ISO 4762	F81002-39	1
7	DOWEL PIN 6M6X12 DIN 7 ISO 2338	F81048-13	1

<sup>1</sup>

- 535876- chain 083-1; p=1/2"; length=0.6096 m(47 links+1 offset link);
- 535877- chain 083-1; p=1/2"; length.=0.762 m (59 links+ 1 offset link);
- 535878- chain 083-1; p=1/2"; length=0.6731 m (53 links);
- 535879-chain 083-1; p=1/2"; length.=0.4393 m; (37 links);
- 533128- master link for chain 083-1 -4 pcs

## 4.4 Shaft With Protective Cover

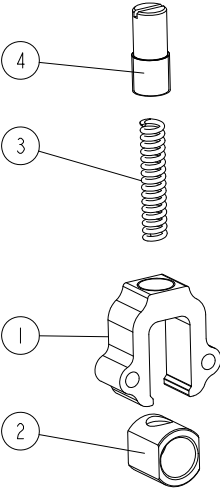
535740\_001  
535740\_MANUAL



REF.	DESCRIPTION (* indicates parts available in assemblies only)	PART #	QTY	
-	SHAFT WITH PROTECTIVE COVER - COMPLETE	535740	1	
1	SHAFT WITH PROTECTIVE COVER	535739	1	
2	HOUSING, BEARING - COMPLETE <a href="#">See Section 4.5</a>	535737	2	
3	BOLT M8X45 HH ZC FT 8.8 DIN 933	F81002-14	4	
4	WASHER 8.4 ZC DIN 126 ISO 7091	F81054-1	8	
5	NUT M8 ZC 8 NYLOCK DIN 982 ISO 7040	F81032-2	4	

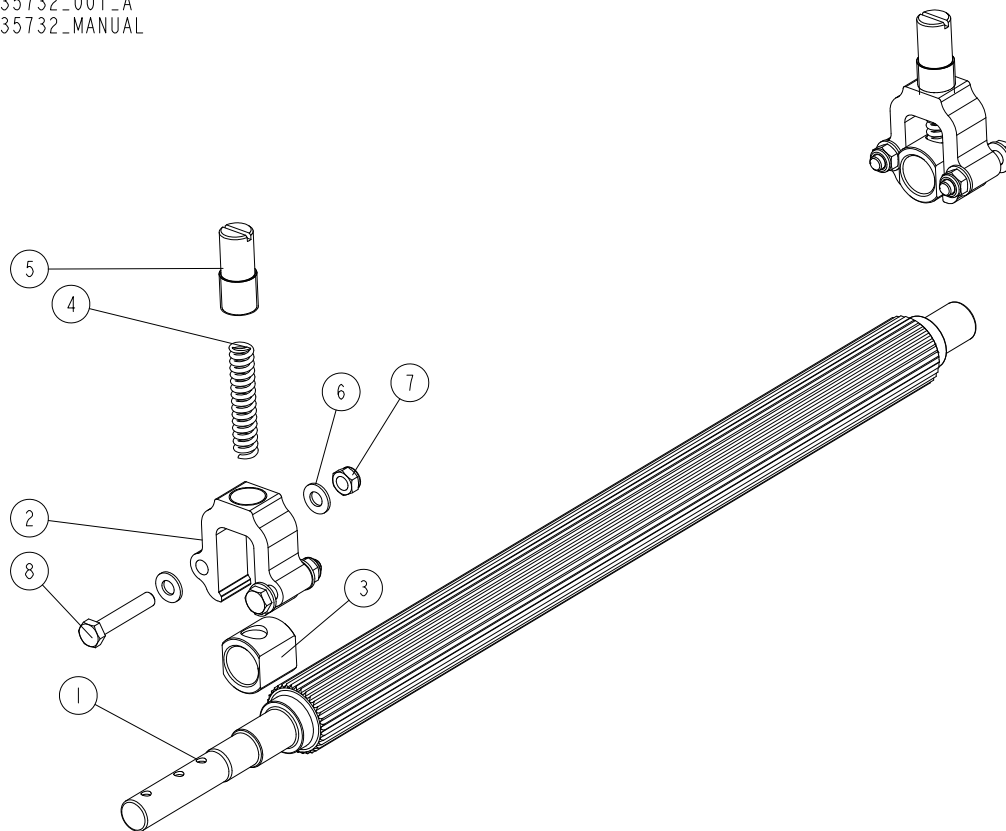
4.5 Bearing

535737\_001\_A  
 535737\_MANUAL



REF	DESCRIPTION (u indicates parts available in assemblies only)	PART #	QTY	
-	HOUSING, BEARING - COMPLETE	535737	1	
1	SLIDE BUSHING HOUSING	535733-1	1	
2	BUSHING, SLIDE	546899	1	
3	SPRING	535736-1	1	
4	ADJUSTMENT SCREW	535734-1	1	

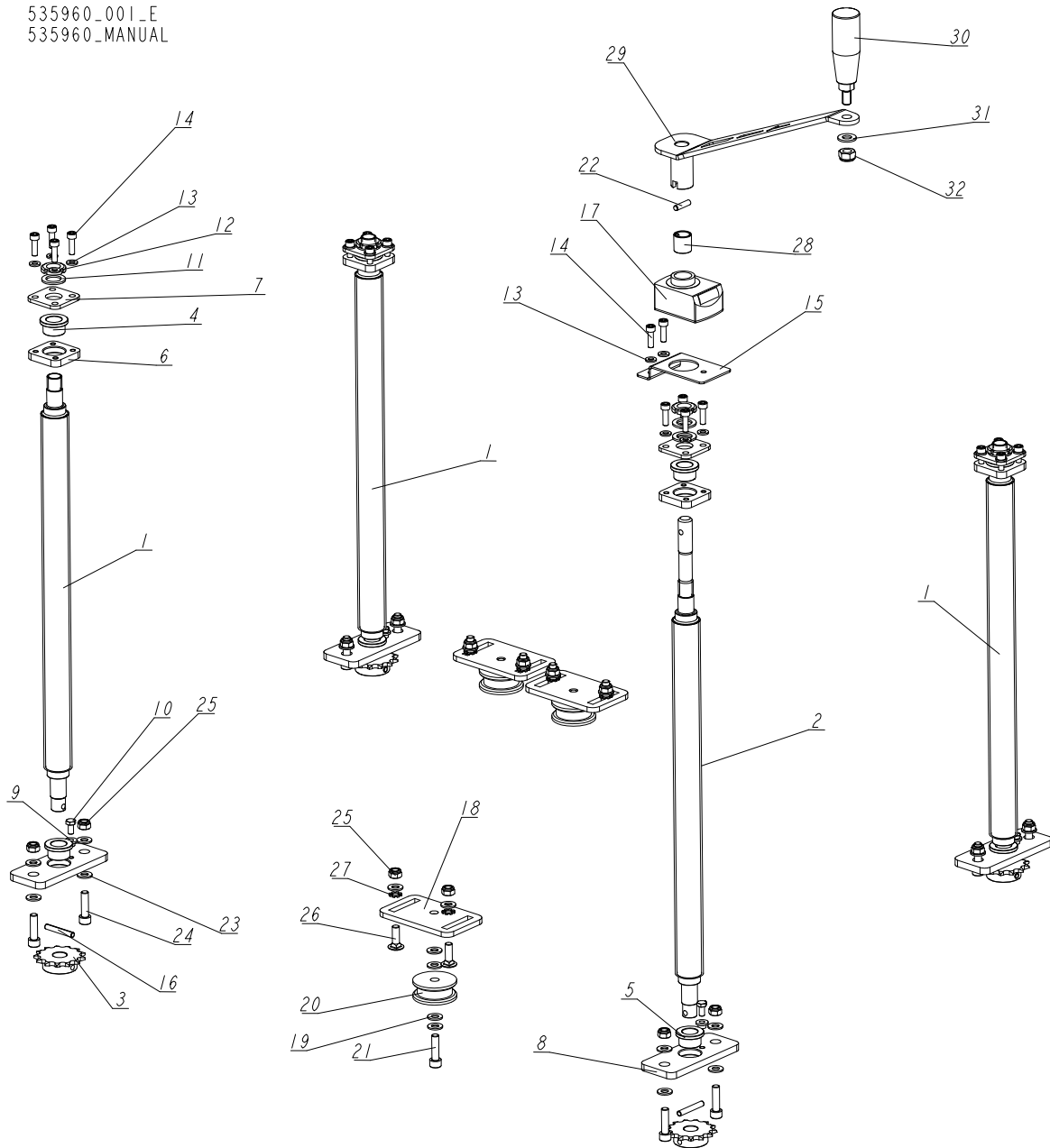
## 4.6 Drive Shaft Assembly

535732\_001\_A  
535732\_MANUAL

REF.	DESCRIPTION (* indicates parts available in assemblies only)	PART #	QTY	
-	<b>STEEL DRIVE SHAFT ASSEMBLY</b>	535732	1	
1	STEEL DRIVE SHAFT	535833-1	1	
-	HOUSING, BEARING - COMPLETE	535737	2	
2	SLIDE BUSHING HOUSING	535733-1	1	
3	BUSHING, SLIDE	546899	1	
4	SPRING	535736-1	1	
5	ADJUSTMENT SCREW	535734-1	1	
6	WASHER 8.4 ZC DIN 126 ISO 7091	F81054-1	8	
7	NUT M8 ZC 8 NYLOCK DIN 982 ISO 7040	F81032-2	4	
8	BOLT M8X45 HH ZC FT 8.8 DIN 933	F81002-14	4	

## 4.7 Up/Down System

535960\_001\_E  
535960\_MANUAL

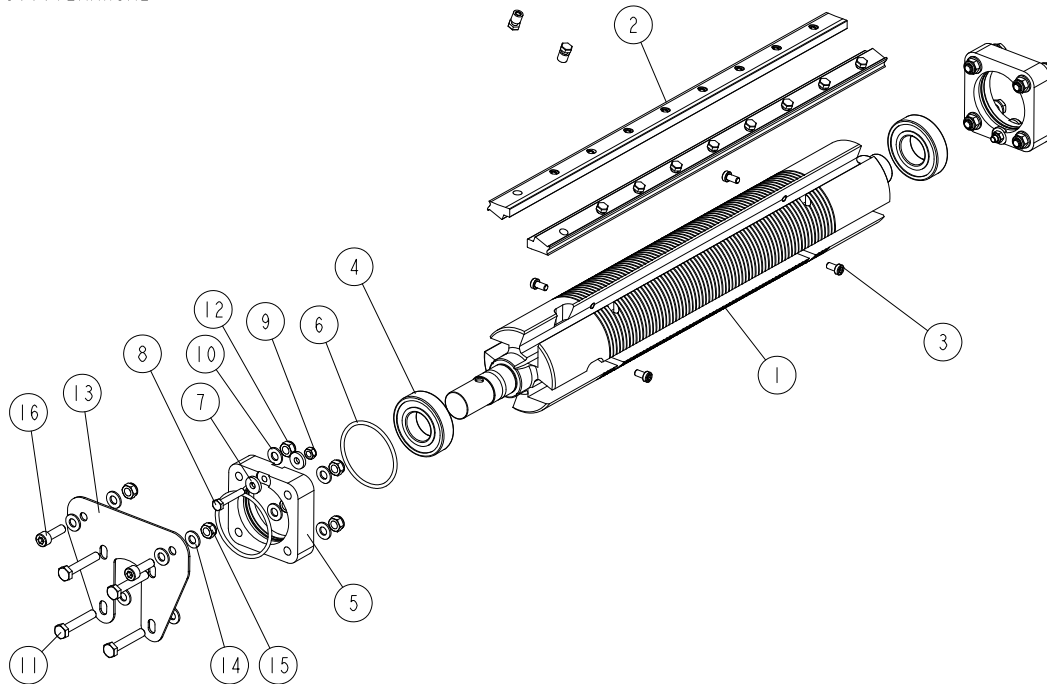


REF	DESCRIPTION (u indicates parts available in assemblies only)	PART #	QTY
-	<b>UP/DOWN FEED ASSEMBLY</b>	535960	1
1	TRAPEZOIDAL SCREW TR32X6	535951	3
2	ADJUSTABLE TRAPEZOIDAL SCREW TR32X6	535952	1
3	SPROCKET Z=13; 1/2"X 3/16"(CHAIN 083-1	535953	4
4	BUSHING 12.3/18-16 FLANGE 32-4	535954	4
5	BUSHING 18/25-16 FLANGE 32-4	546904	4
6	PLATE 1 - SCREW MOUNT	535962-1	4
7	PLATE 2 - SCREW MOUNT	535963-1	4
8	PLATE 3 - SCREW MOUNT	535964-1	4
9	LOCKING BUSHING	535965-1	4
10	BOLT, M6X12 8.8 HEX HEAD FULL THREAD ZIN	F81001-7	4

REF	DESCRIPTION (u indicates parts available in assemblies only)	PART #	QTY	
11	NYLON WASHER 17.5X27X2	535967	5	
12	NUT KM3 M17X1 NYLOCK DIN 981	535966	4	
13	WASHER, 6.4 FLAT ZINC	F81053-1	18	
14	SCREW M6X20 SHCS ZC 8.8 DIN 912 ISO 4762	F81001-22	18	
15	BRACKET	535961-1	1	
16	ROLL PIN 6X40 ZC DIN 1481 ISO 8752	F81045-8	4	
17	POSITION INDICATOR	535968	1	
-	CHAIN TENSION ASSEMBLY	535970	3	
18	WELDED TENSION PLATE	535969-1	1	
19	WASHER, 8.4 FLAT ZINC	F81054-1	4	
20	ROLLER, TENSIONER	533576	1	
21	SCREW, M8X30-8.8 HEX SOCKET HEAD CAP ZIN	F81002-31	1	
22	DOWEL PIN 6M6X12 DIN 7 ISO 2338	F81045-5	1	
23	WASHER, 8.4 FLAT ZINC	F81054-1	22	
24	SCREW, M8X30-8.8 HEX SOCKET HEAD CAP ZIN	F81002-31	8	
25	NUT, M8-8-B HEX NYLON ZINC LOCK	F81032-2	14	
26	BOLT M8X25 CARRIAGE ZC 8.8 DIN603 ISO 86	F81002-59	6	
27	WASHER, 8.4 EXTERIOR STAR LOCK ZINC	F81054-3	6	
28	REDUCING SLEEVE	541138	1	
-	HANDLE ASSEMBLY	535975	1	
29	HANDLE WELDMENT	535973-1	1	
30	REVOLVING GRIP	535974	1	
31	WASHER 10,5 ZC DIN 126 ISO 7091	F81055-1	1	
32	NUT M10 ZC 8 NYLOCK DIN 982 ISO 7040	F81033-1	1	

## 4.8 Upper Cutter

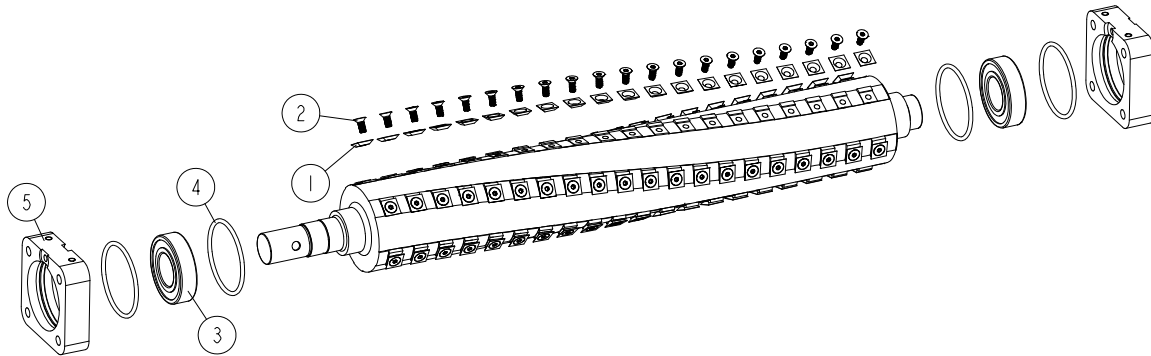
536961\_001  
536961\_MANUAL



REF.	DESCRIPTION (* indicates parts available in assemblies only)	PART #	QTY
-	<b>UPPER CUTTER ASSEMBLY</b>	536961	1
1	UPPER CUTTER	360-104-1	1
2	MOUNTING WEDGE SET	360-060	1
3	SCREW M6X12 LSHCS 10.9 DIN 7984	F81001-80	4
4	BEARING, 6206 2RSR P6 ROLLING (FAG, NSK, SKF)	100787	2
-	<b>UPPER CUTTER BEARING HOUSING ASSMEBLY</b>	536964	2
5	HOUSING, BEARING	533590-1	1
6	O-RING, BEARING HOUSING	533592	2
7	WASHER 6.4 ZC DIN 7349	F81053-13	2
8	BOLT M6X35 HH ZC 8.8 PT DIN 931	F81001-71	1
9	NUT M6 ZC 8 NYLOCK DIN 982 ISO 7040	F81031-2	1
10	WASHER 8.4 ZC DIN 126 ISO 7091	F81054-1	8
11	BOLT M8X45 HH ZC FT 8.8 DIN 933	F81002-14	4
12	NUT M8 ZC 8 NYLOCK DIN 982 ISO 7040	F81032-2	4
13	MOUNTING PLATE	536969-1	1
14	WASHER 8.4 ZC DIN 126 ISO 7091	F81054-1	4
15	NUT M8 ZC 8 NYLOCK DIN 982 ISO 7040	F81032-2	2
16	SCREW M8X25 SHCS ZC 8.8 DIN 912 ISO 4762	F81002-21	2

## 4.9 Helical Upper Cutter

THH360TC-S\_001  
 THH360TC-S

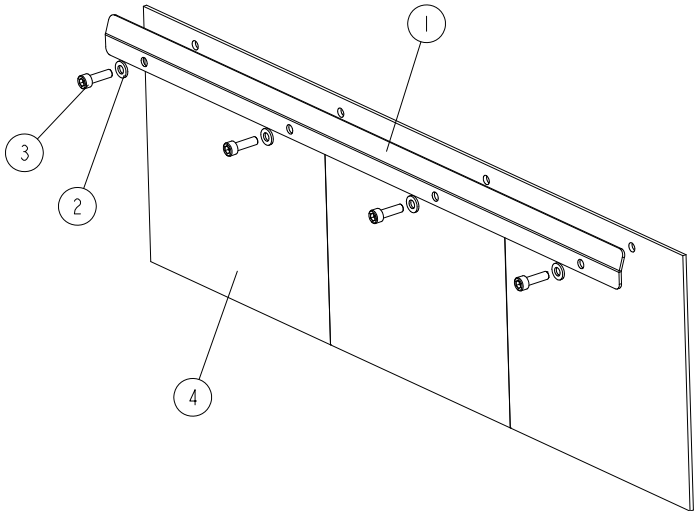


REF	DESCRIPTION (u indicates parts available in assemblies only)	PART #	QTY	
-	<b>KIT, MP360 HELICAL TOP CUTTERHEAD</b>	THH360TC-S	1	
-	CUTTERHEAD, HELICAL THH360TC	THH360TC	1	
1	INSERT, REPLACEMENT CARBIDE	TIK19HM	100	
2	SCREW, 10-32X1/2 FH BO; TORX PLUS	F05004-325	100	
3	BEARING, 6206 2RSR P6 ROLLING (FAG, NSK,	100787	2	
4	O-RING, BEARING HOUSING	533592	4	
5	HOUSING, BEARING	533590-1	2	



4.10 Guard

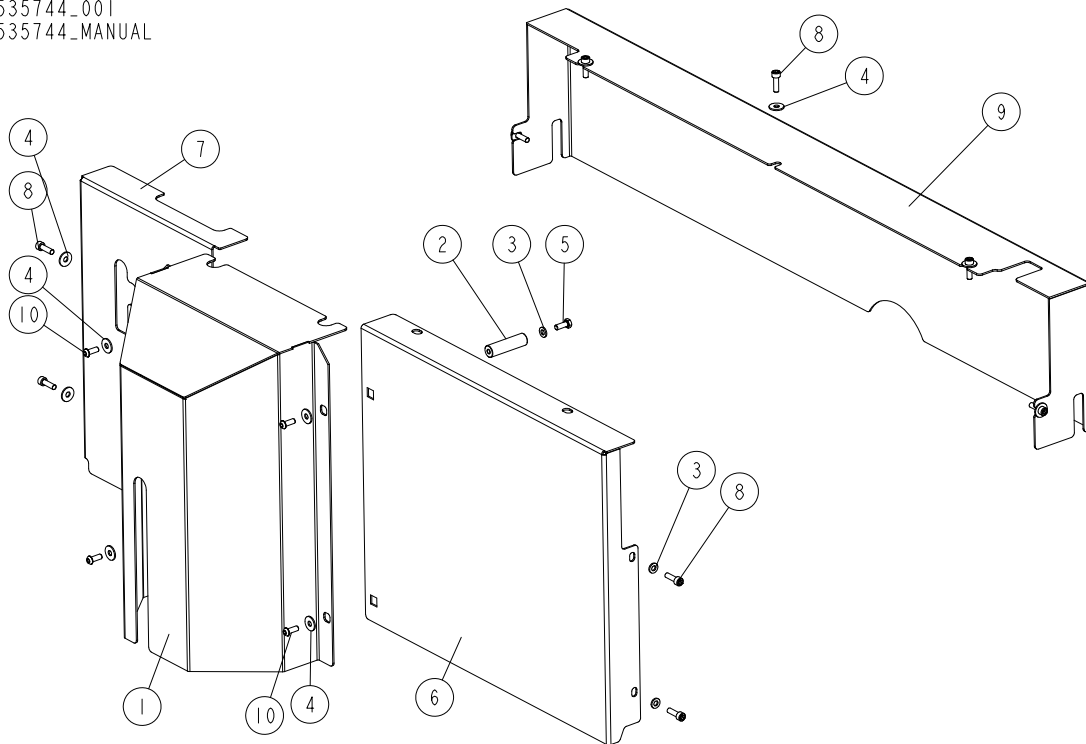
535850\_001  
535850\_MANUAL



REF	DESCRIPTION (* indicates parts available in assemblies only)	PART #	QTY	
-	<b>COMPLETE GUARD</b>	535850	1	
1	FLEXIBLE GUARD BRACKET	535849-1	1	
2	WASHER 6.4 ZC DIN 126 ISO 7091	F81053-1	4	
3	SCREW M6X20 SHCS ZC 8.8 DIN 912 ISO 4762	F81001-22	4	
4	FLEXIBLE GUARD	535851	1	

**4.11 Guard Set**

535744\_001  
535744\_MANUAL

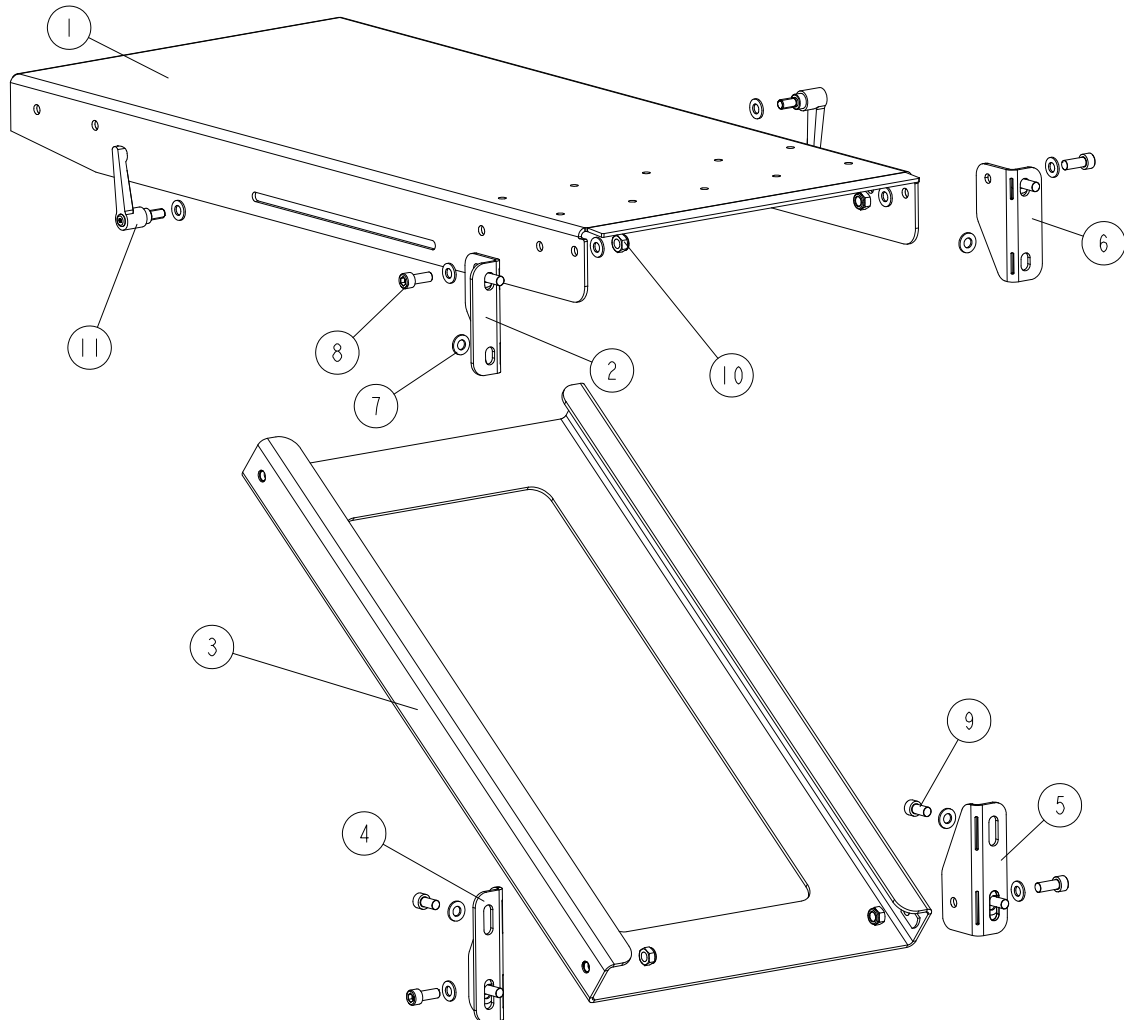


REF.	DESCRIPTION (* indicates parts available in assemblies only)	PART #	QTY
-	<b>GUARD SET</b>	535744	1
1	MIDDLE GUARD	535654-1	1
2	BUSHING M6/15-54	535743-1	2
3	WASHER 6.4 ZC DIN 126 ISO 7091	F81053-1	4
4	WASHER 6.5 ZC FENDER DIN 9021 ISO 7093	F81053-11	11
5	BOLT M6X16 HH ZC FT 8.8 DIN 933	F81001-15	2
6	FRONT RIGHT GUARD	535742-1	1
7	FRONT LEFT GUARD	535741-1	1
8	SCREW M6X20 SHCS ZC 8.8 DIN 912 ISO 4762	F81001-22	9
9	BACK GUARD	535632-1	1
10	HEX SOCKET BUTTON HEAD SCREW M6X16 ZC 10.9 ISO 7380-1	F81001-99	4

## SECTION 5 TABLES

### 5.1 Outfeed Table

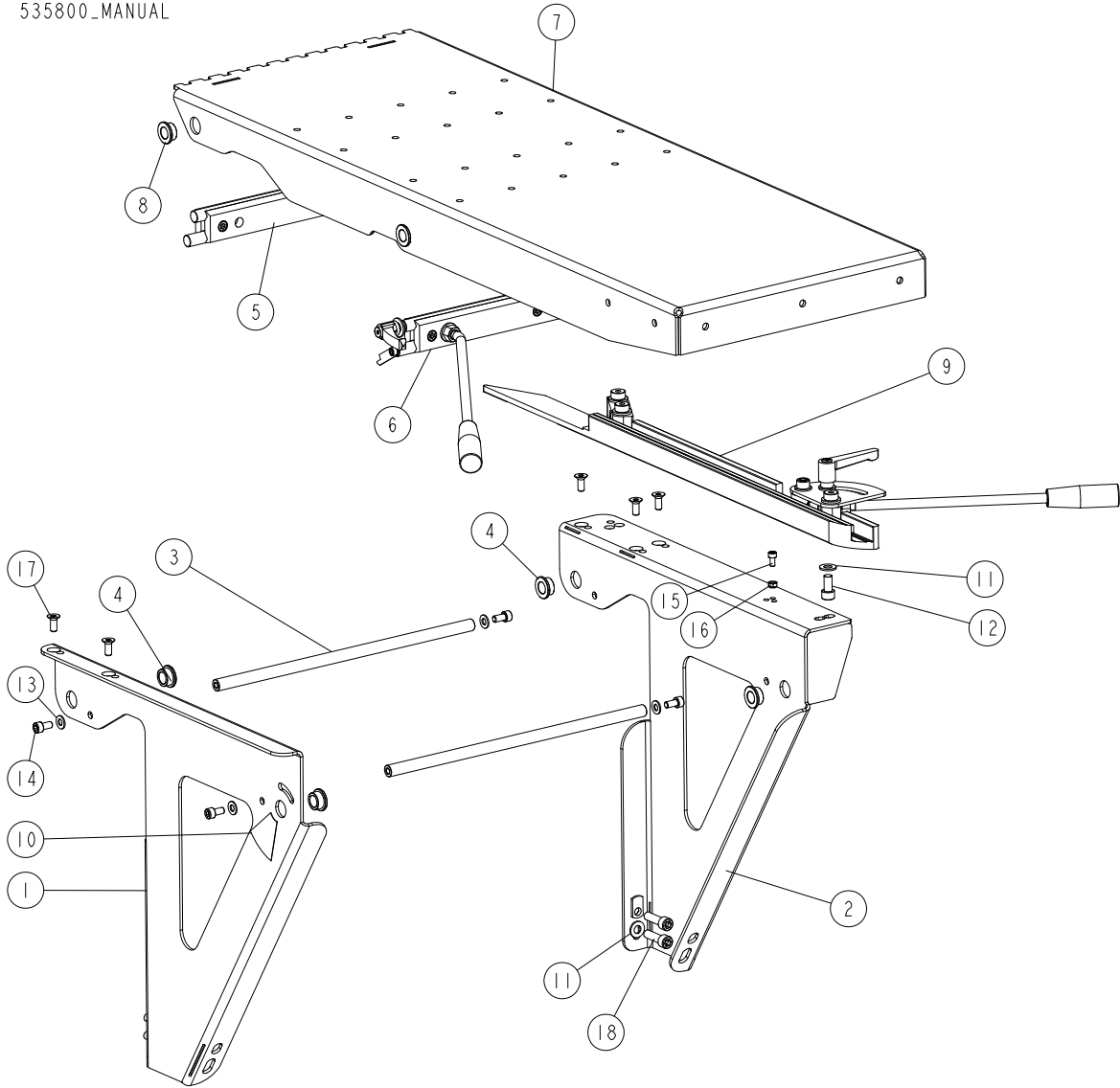
536974\_001  
536974\_MANUAL



REF.	DESCRIPTION (* indicates parts available in assemblies only)	PART #	QTY
-	<b>OUTFEED TABLE ASSEMBLY</b>	536974	1
1	OUTFEED TABLE TOP	536976-1	1
2	MOUNTING PLATE 2	536970-1	1
3	BRACKET WELDMENT	536977-1	1
4	MOUNTING PLATE 1	536967-1	1
5	MOUNTING PLATE 3	536978-1	1
6	MOUNTING PLATE 4	536979-1	1
7	WASHER, 10.5 ZC DIN 126 ISO 7091	F81055-1	16
8	SCREW, M10X25 SHCS ZC 8.8 DIN 912 ISO 4762	F81003-32	6
9	SCREW M10X20 SHCS ZC 8.8 DIN 912 ISO 4762	F81003-108	6
10	NUT, M10 ZC 8 NYLOCK DIN 982 ISO 7040	F81033-1	4
11	ADJUSTABLE LEVER GN 302-78-M10-20-SW	537518	2

## 5.2 Infeed Table

535800\_001  
535800\_MANUAL

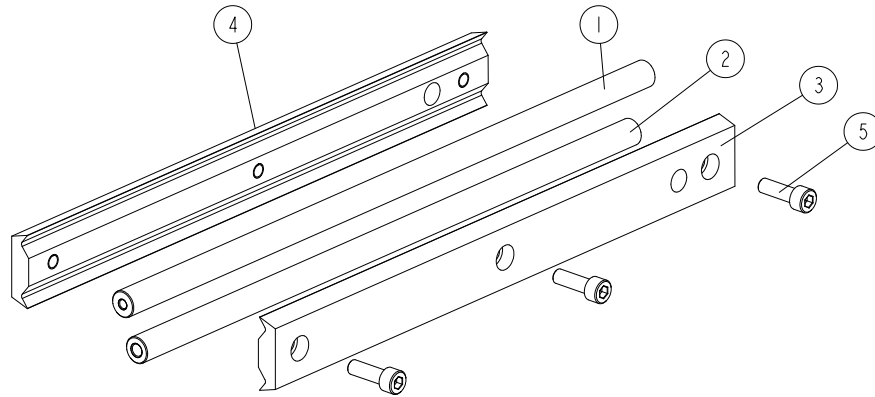


REF.	DESCRIPTION (* indicates parts available in assemblies only)	PART #	QTY
-	<b>INFEED TABLE - COMPLETE</b>	535800	1
1	SUPPORT PLATE 1 - COMPLETE	535764-1	1
2	SUPPORT PLATE 2 - COMPLETE	535816-1	1
3	SHAFT	535817-1	2
4	BUSHING 15/22-12 FLANGE 28-3	534359	4
5	REAR ADJUSTMENT RAIL ASSEMBLY <a href="#">See Section 5.3</a>	535820	1
6	FRONT ADJUSTMENT RAIL ASSEMBLY <a href="#">See Section 5.4</a>	537505	1
-	INFEED TABLE TOP PLATE - COMPLETE	535755	1
7	INFEED TABLE TOP PLATE WELDMENT	535754-1	1
8	BUSHING 15/22-12 FLANGED 28-3	534359	4
9	BOARD GUIDE FENCE 1 - COMPLETE <a href="#">See Section 5.5</a>	537516	1
10	LABEL	537504	1

REF.	DESCRIPTION (* indicates parts available in assemblies only)	PART #	QTY	
11	WASHER 10.5 ZC DIN 126 ISO 7091	F81055-1	3	
12	SCREW M10X20 SHCS ZC 8.8 DIN 912 ISO 4762	F81003-108	1	
13	WASHER 8.4 ZC DIN 126 ISO 7091	F81054-1	4	
14	SCREW M8X16 SHCS ZC 8.8 DIN 912 ISO 4762	F81002-39	4	
15	SCREW M6X12 SHCS ZC 8.8 DIN 912 ISO 4762	F81001-87	1	
16	NUT M6 ZC 8 NYLOCK DIN 982 ISO 7040	F81031-2	1	
17	SCREW M8X20 HSFHS ZC 8.8 DIN 7991 ISO 10642	F81002-70	5	
18	SCREW M10X35 SHCS ZC 8.8 DIN912 ISO 4762	F81003-56	4	

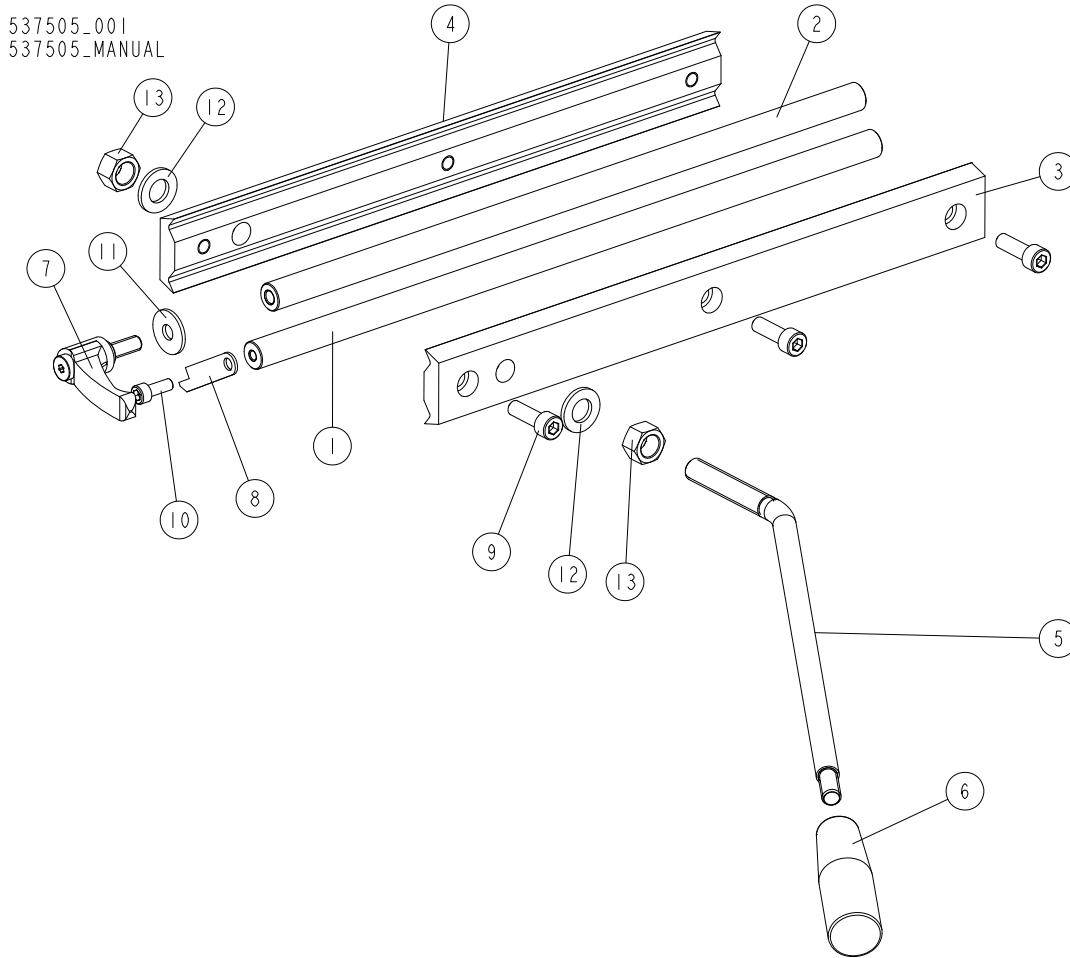
### 5.3 Rear Adjustment Rail

535820\_001  
535820\_MANUAL



REF.	DESCRIPTION (* indicates parts available in assemblies only)	PART #	QTY	
-	REAR ADJUSTMENT RAIL ASSEMBLY	535820	1	
1	ROD 1	535818	1	
2	ROD 2	535819	1	
3	RIGHT BRACKET	537501	1	
4	LEFT BRACKET	537502	1	
5	SCREW M8X25 SHCS ZC 8.8 DIN 912 ISO 4762	F81002-21	3	

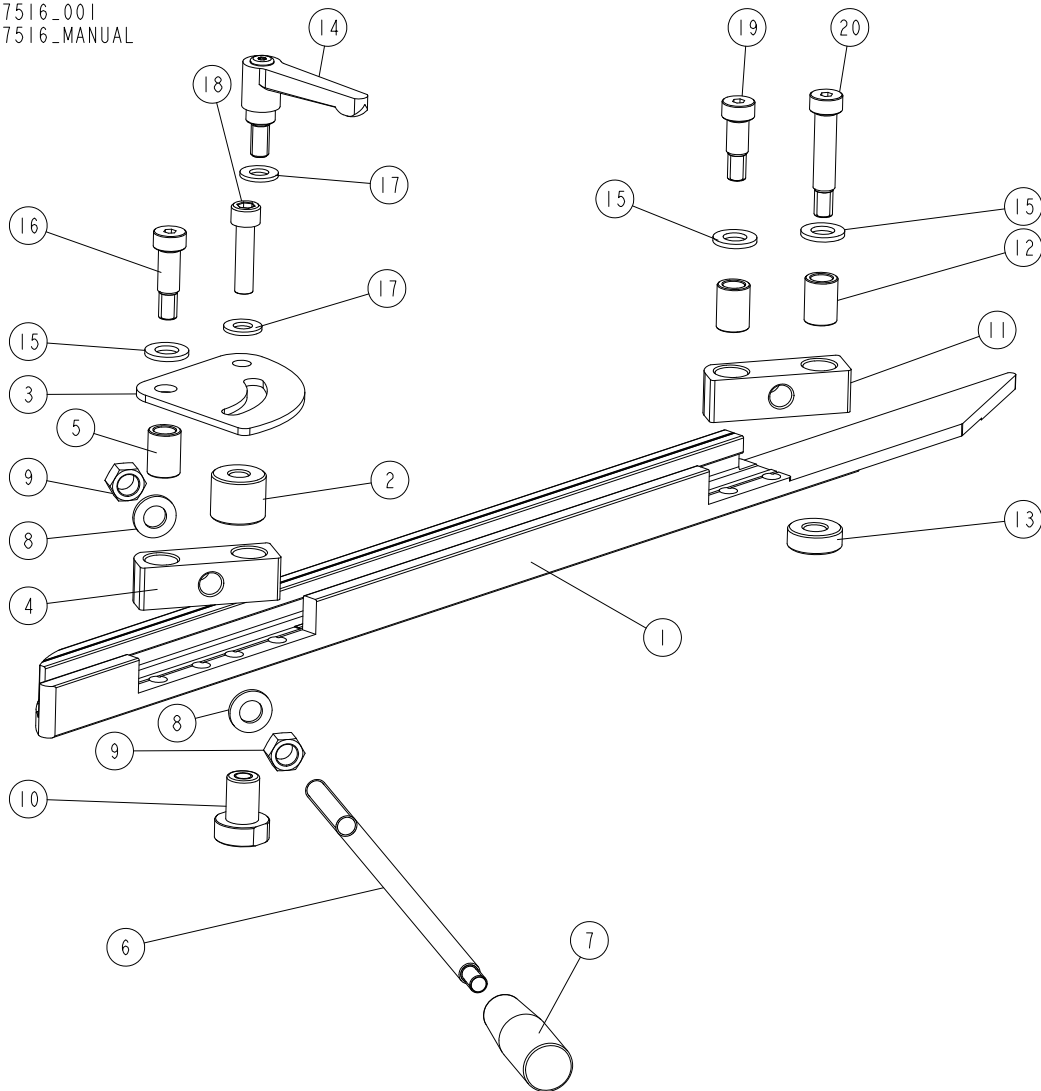
## 5.4 Front Adjustment Rail



REF.	DESCRIPTION (* indicates parts available in assemblies only)	PART #	QTY
-	<b>FRONT ADJUSTMENT RAIL ASSEMBLY</b>	537505	1
1	ROD 1	535818	1
2	ROD 2	535819	1
3	RIGHT BRACKET	537501	1
4	LEFT BRACKET	537502	1
5	ROD, M12	534379-1	1
6	GRIP, K1202.11028 TAPERED	534381	1
7	ADJUSTABLE HANDLE ERZ.63 P- M8X20	534378	1
8	SCALE INDICATOR	537503-1	1
9	SCREW M8X25 SHCS ZC 8.8 DIN 912 ISO 4762	F81002-21	3
10	SCREW M6X16 SHCS ZC 8.8 DIN 912 ISO 4762	F81001-21	1
11	WASHER 8.5 ZC FENDER DIN 9021 ISO 7093	F81054-11	1
12	WASHER 13 ZC DIN 126 ISO 7091	F81056-1	2
13	NUT M12 ZC 8 DIN 934	F81034-1	2

**5.5 Board Guide Fence 1**

537516\_001  
537516\_MANUAL



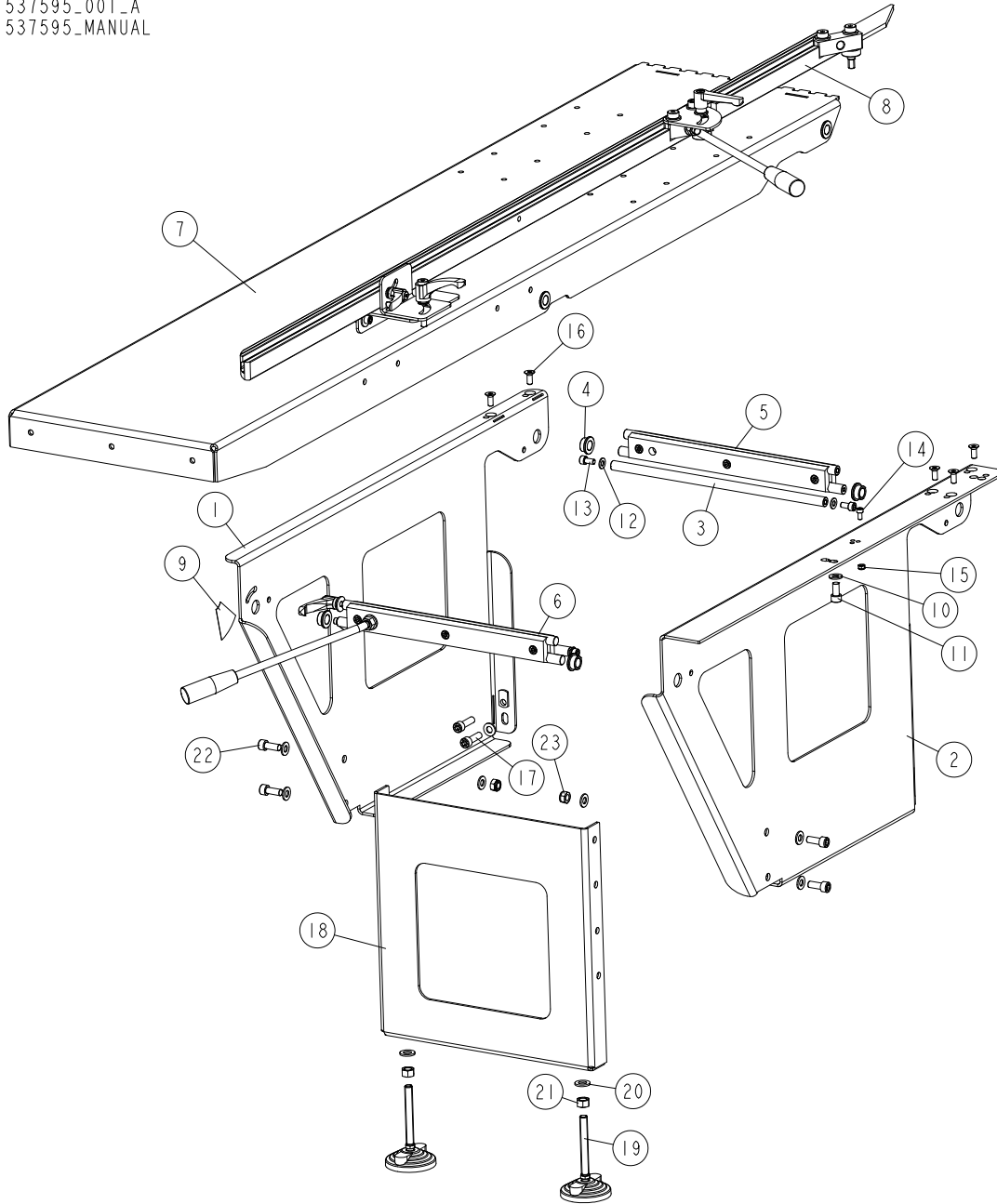
REF.	DESCRIPTION (* indicates parts available in assemblies only)	PART #	QTY
-	<b>BOARD GUIDE FENCE 1 - COMPLETE</b>	537516	1
1	FENCE 1	537514-1	1
2	BUSHING 10.5/30-25	537513-1	1
3	PLATE	537511-1	1
-	LEVER ASSEMBLY	537510	1
4	LEVER BLOCK	537506-1	1
5	BUSHING 12/18-25	537508	1
6	THREADED ROD	537507-1	1
7	GRIP, K1202.11028 C TAPERED	534381	1
8	WASHER 13 ZC DIN 126 ISO 7091	F81056-1	2
9	NUT M12 ZC 8 DIN 934	F81034-1	2
10	THREADED BUSHING	537512-1	1
-	COMPLETE BLOCK	537515	1
11	LEVER BLOCK	537506-1	1
12	BUSHING 12/18-25	537508	2



REF.	DESCRIPTION (* indicates parts available in assemblies only)	PART #	QTY	
13	BUSHING 12.5/30-11	537517-1	1	
14	ADJUSTABLE LEVER GN 302-78-M10-20-SW	537518	1	
15	WASHER 13 ZC DIN 126 ISO 7091	F81056-1	3	
16	BOLT 12/M10X25 ZC SHOULDER 12.9 DIN 9841 ISO 7379	F81003-84	1	
17	WASHER 10.5 ZC DIN 126 ISO 7091	F81055-1	2	
18	SCREW M10X40 SHCS ZC 8.8 DIN 912 ISO 4762	F81003-22	1	
19	BOLT 12/M10X20 SHOULDER 12.9 DIN 9814 ISO 7379	F81003-68	1	
20	BOLT 12/M10X45 ZC SHOULDER 12.9 DIN 9841 ISO 7379	F81003-152	1	

**5.6 Infeed Table 2m (Option)**

537595\_001\_A  
537595\_MANUAL

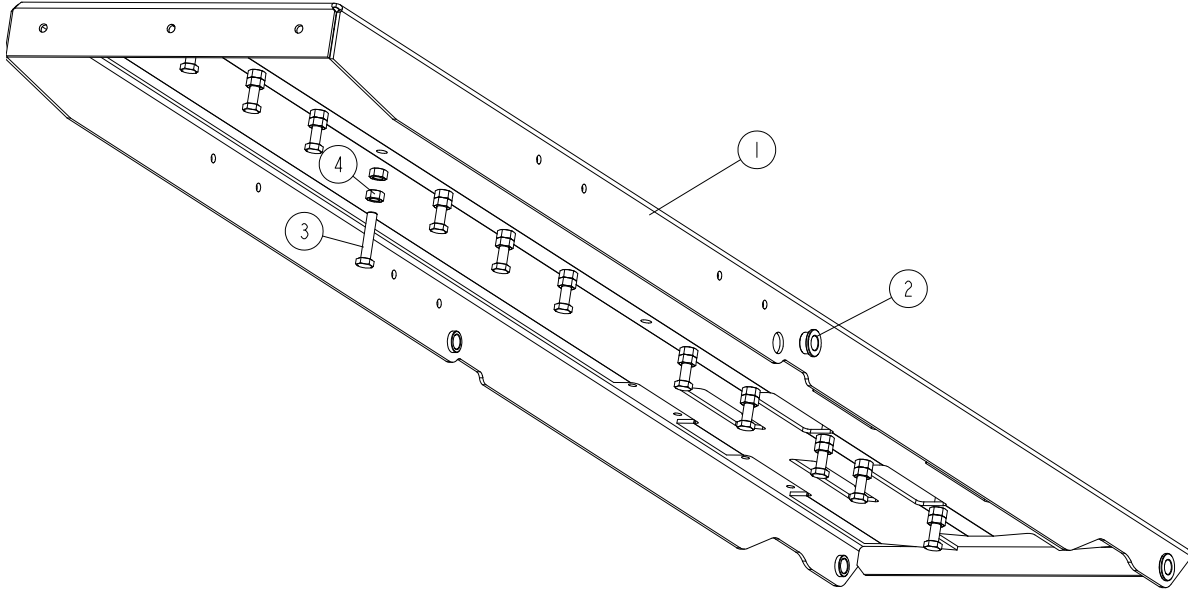


REF	DESCRIPTION (u indicates parts available in assemblies only)	PART #	QTY
-	<b>INFEEED TABLE COMPLETE</b>	537595	1
1	SUPPORT PLATE 1	542501-1	1
2	SUPPORT PLATE 2	542502-1	1
3	SHAFT	535817-1	2
4	BUSHING 15/22-12 FLANGED 28-3	534359	4
5	REAR GUIDE RAIL ASSEMBLY <a href="#">See Section 5.3</a>	535820	1
6	FRONT GUIDE RAIL ASSEMBLY <a href="#">See Section 5.4</a>	537505	1
7	INFEEED TABLE TOP COMPLETE <a href="#">See Section 5.7</a>	537590	1
8	BOARD GUIDE FENCE COMPLETE <a href="#">See Section 5.8</a>	537598	1

REF	DESCRIPTION (u indicates parts available in assemblies only)	PART #	QTY	
9	LABEL	537504	1	
10	WASHER 10,5 ZC DIN 126 ISO 7091	F81055-1	11	
11	SCREW M10X20 SHCS ZC 8.8 DIN 912 ISO4762	F81003-108	1	
12	WASHER, 8.4 FLAT ZINC	F81054-1	4	
13	SCREW, M8X16-8.8-HEX SOCKET HEAD CAP ZIN	F81002-39	4	
14	SCREW M6X12 SHCS ZC 8.8 DIN 912 ISO 4762	F81001-87	1	
15	NUT, M6-8-B HEX NYLON ZINC LOCK	F81031-2	1	
16	SCREW M8X20 HSFHS ZC 8.8 DIN 7991 ISO 1	F81002-70	5	
17	SCREW M10X35 SHCS ZC 8.8 DIN912 ISO 47	F81003-56	4	
-	FOOT, ASSEMBLY	537679	1	
18	FOOT, TABLE	537678-1	1	
19	FOOT, LV.F-80-14-M12X98	537813	2	
20	WASHER, 13 FLAT ZINC	F81056-1	2	
21	NUT, M12-8-B HEX ZINC	F81034-1	2	
22	SCREW M10X25 SHCS ZC 8.8 DIN 912 ISO 476	F81003-32	4	
23	NUT M10 ZC 8 NYLOCK DIN 982 ISO 7040	F81033-1	4	

**5.7 Infeed Table Top**

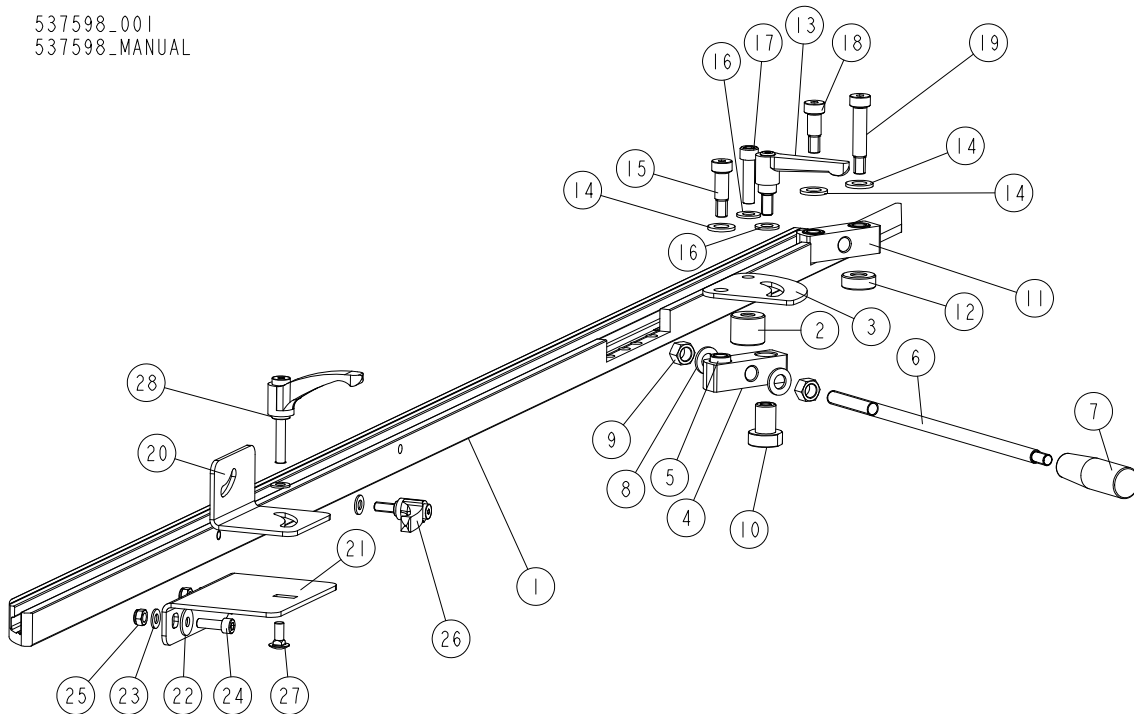
537590\_001  
 537590\_MANUAL



Ref	DESCRIPTION (* indicates parts available in assemblies only)	PART #	QTY
-	<b>INFEEED TABLE TOP COMPLETE</b>	537590	1
1	INFEEED TABLE TOP WELDMENT	537589-1	1
2	BUSHING 15/22-12 FLANGED 28-3	534359	4
3	BOLT M10X50 HH ZC FT 8.8 DIN 933	F81003-4	12
4	NUT M10 ZC 8 DIN 934	F81033-3	12

## 5.8 Board Guide Fence

537598\_001  
537598\_MANUAL



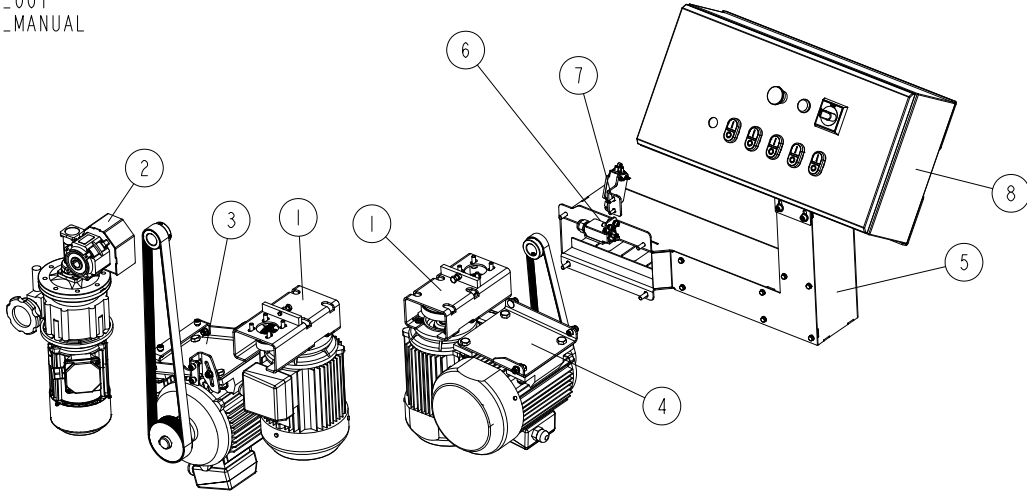
Ref	DESCRIPTION (* indicates parts available in assemblies only)	PART #	QTY
-	<b>BOARD GUIDE FENCE COMPLETE</b>	537598	1
1	FENCE	537597-1	1
2	BUSHING 10.5/30-25	537513-1	1
3	PLATE	537511-1	1
-	<b>LEVER ASSEMBLY</b>	537510	1
4	LEVER BLOCK	537506-1	1
5	BUSHING 12/18-25	537508	1
6	THREADED ROD	537507-1	1
7	GRIP, K1202.11028 C TAPERED	534381	1
8	WASHER 13 ZC DIN 126 ISO 7091	F81056-1	2
9	NUT M12 ZC 8 DIN 934	F81034-1	2
10	THREADED BUSHING	537512-1	1
11	COMPLETE BLOCK	537515	1
12	BUSHING 12.5/30-11	537517-1	1
13	ADJUSTABLE LEVER GN302-78-M10-20-SW	537518	1
14	WASHER 13 ZC DIN 126 ISO 7091	F81056-1	3
15	BOLT 12/M10X25 ZC SHOULDER 12.9 DIN 9841 ISO 7379	F81003-84	1
16	WASHER 10,5 ZC DIN 126 ISO 7091	F81055-1	2
17	SCREW M10X40 SHCS ZC 8.8 DIN 912 ISO 4762	F81003-22	1
18	BOLT, 12/M10X20 SHOULDER 12.9 DIN 9814 ISO 7379	F81003-68	1
19	BOLT 12/M10X45 ZC SHOULDER 12.9 DIN 9841 ISO 7379	F81003-152	1
20	PLATE	537594-1	1
21	PLATE	537596-1	1
22	WASHER 8,5 ZC FENDER DIN 9021 ISO 7093	F81054-11	2
23	WASHER 8,4 ZC DIN 126 ISO 7091	F81054-1	4

Ref	DESCRIPTION (* indicates parts available in assemblies only)	PART #	QTY	
24	SCREW M8X25 SHCS ZC 8.8 DIN 912 ISO 4762	F81002-21	2	
25	NUT M8 ZC 8 NYLOCK DIN 982 ISO 7040	F81032-2	2	
26	ADJUSTABLE HANDLE ERZ.63 P-M8X20	534378	1	
27	BOLT M8X20 CARRIAGE ZC 8.8 DIN603 ISO 8677	F81002-121	1	
28	HANDLE ERZ.63 A-M8	537599	1	

## SECTION 6 MOTOR KITS

### 6.1 Motor Kit for MP360 EH 3x400V CE

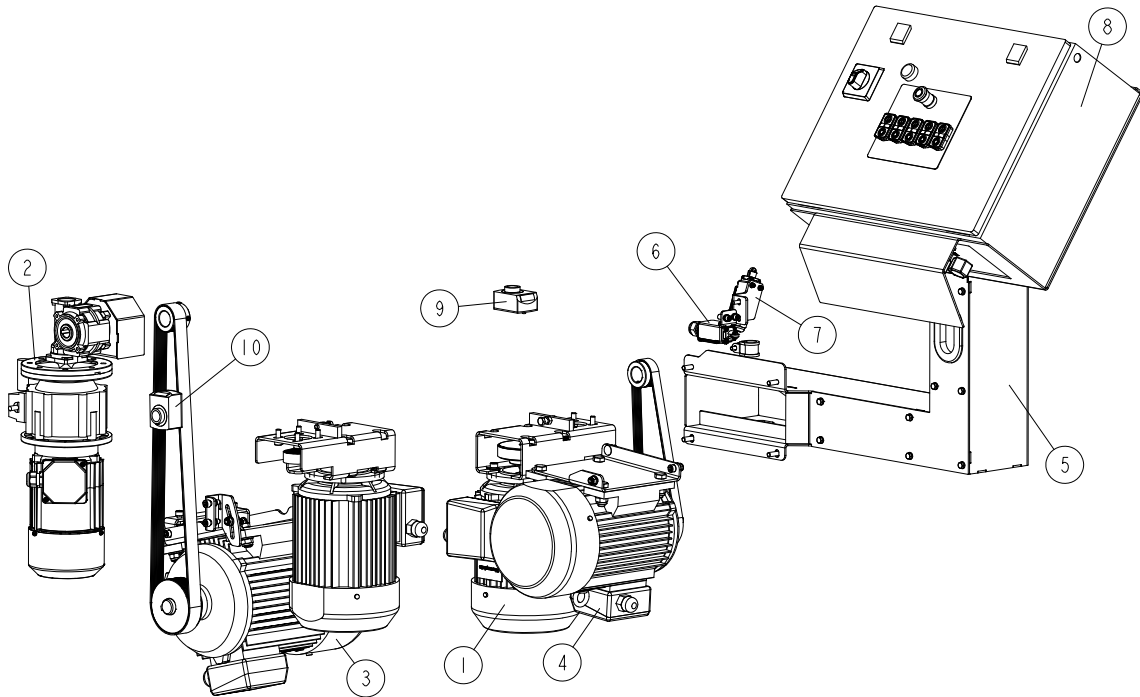
535745\_001  
535745\_MANUAL



REF.	DESCRIPTION (* indicates parts available in assemblies only)	PART #	QTY
-	<b>MOTOR KIT FOR MP360 EH 3x400V CE</b>	535745	1
-	<b>MOTOR KIT FOR MP360 EB 3x230V CE</b>	535745-2	1
1	SIDE CUTTER DRIVE <a href="#">See Section 6.5</a>	533647	2
2	MP360 FEED DRIVE <a href="#">See Section 6.6</a>	535802	1
3	HORIZONTAL UPPER CUTTER DRIVE <a href="#">See Section 6.7</a>	535810	1
4	HORIZONTAL BOTTOM CUTTER DRIVE <a href="#">See Section 6.8</a>	535728	1
5	ELECTRICAL BOX BRACKET - COMPLETE <a href="#">See Section 6.9</a>	535715	1
6	SAFETY SWITCH ASSEMBLY 1 <a href="#">See Section 6.11</a>	535840	1
7	SAFETY SWITCH ASSEMBLY 2 <a href="#">See Section 6.12</a>	535844	1
8	ELECTRICAL BOX MP360H <a href="#">See Section 6.13</a>	532800	1

**6.2 Motor Kit for MP360BU 3x230V UL**

535745-2U-US\_001  
535745-2U-US\_MANUAL

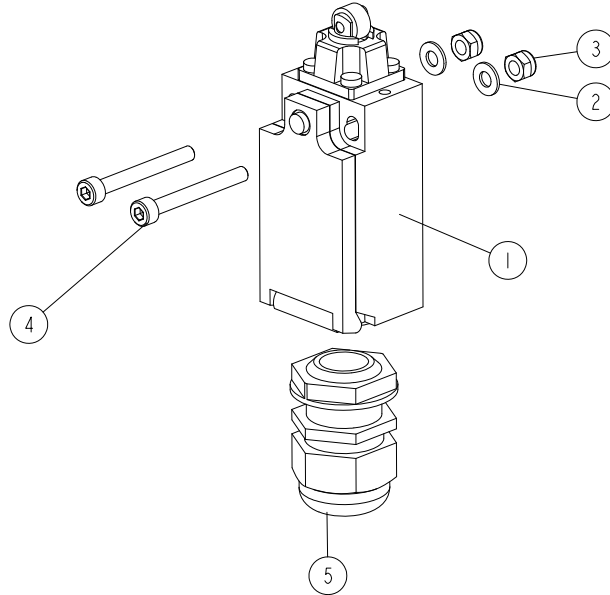


REF.	DESCRIPTION (* indicates parts available in assemblies only)	PART #	QTY
-	<b>MOTOR KIT FOR MP360EB16U</b>	535745-2U-US	1
1	SIDE CUTTER DRIVE <a href="#">See Section 6.5</a>	533647-U-US	2
2	MP360 FEED DRIVE <a href="#">See Section 6.6</a>	535802-U-US	1
3	HORIZONTAL UPPER CUTTER DRIVE <a href="#">See Section 6.7</a>	535810-U-US	1
4	HORIZONTAL BOTTOM CUTTER DRIVE <a href="#">See Section 6.8</a>	535728-U-US	1
5	ELECTRICAL BOX BRACKET - COMPLETE <a href="#">See Section 6.10</a>	577461	1
6	SAFETY SWITCH ASSEMBLY 1 <a href="#">See Section 6.11</a>	535840	1
7	SAFETY SWITCH ASSEMBLY 2 <a href="#">See Section 6.12</a>	535844	1
8	ELECTRICAL BOX MP360EB16U US	121321	1
9	POSITION INDICATOR, INCH SCALE	541150	1
10	ADJUSTABLE POSITION INDICATOR, INCH SCALE	541149	1



### 6.3 Safety Switch Assembly 4

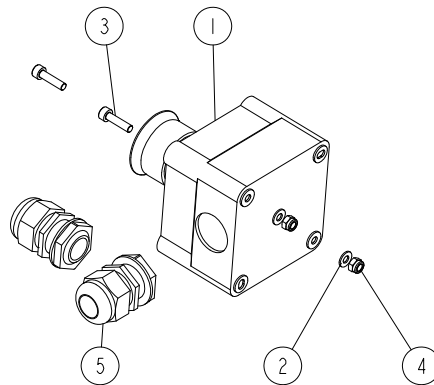
537383\_001  
 537383\_MANUAL



REF	DESCRIPTION (* indicates parts available in assemblies only)	PART #	QTY
-	<b>SAFETY SWITCH ASSEMBLY 4</b>	537383	1
1	SAFETY SWITCH D4N-4132	537641	1
2	WASHER 4,3 ZC DIN 126 ISO 7091	F81051-2	2
3	NUT M4 ZC 8 NYLOCK DIN 982 ISO 7040	F81029-1	2
4	BOLT M4X35 SHCS ZC PT 8.8 DIN 912 ISO 4762	F81011-34	2
5	ELECTRICAL GLAND 20 HML	F81096-41	1

## 6.4 Emergency Stop Assembly

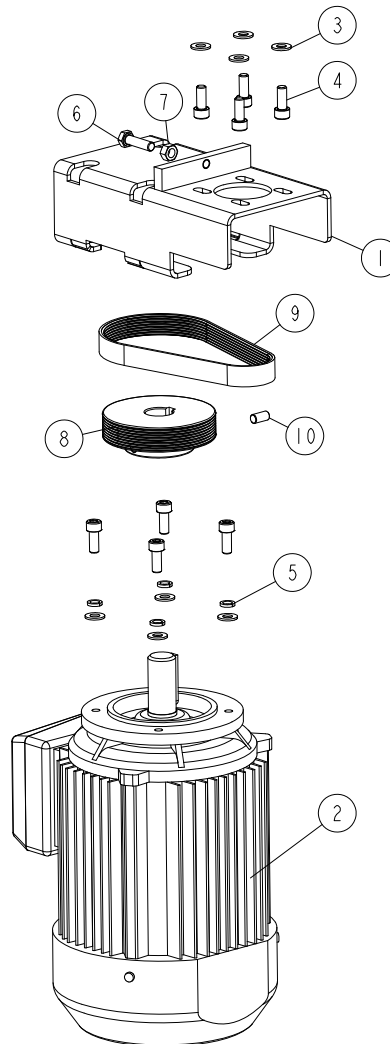
537384\_001  
537384\_MANUAL



REF	DESCRIPTION (* indicates parts available in assemblies only)	PART #	QTY	
-	<b>EMERGENCY STOP ASSEMBLY</b>	537384	1	
1	SWITCH, LPZ P1 B5 03 EMERGENCY STOP	536158	1	
2	WASHER 4,3 ZC DIN 126 ISO 7091	F81051-2	2	
3	SCREW M4X16 SHCS ZC 8.8 DIN 912 ISO 4762	F81011-56	2	
4	NUT M4 ZC 8 NYLOCK DIN 982 ISO 7040	F81029-1	2	
5	ELECTRICAL GLAND 20 HML	F81096-41	2	

## 6.5 Side Cutter Drive

533647\_001\_B  
533647\_MANUAL



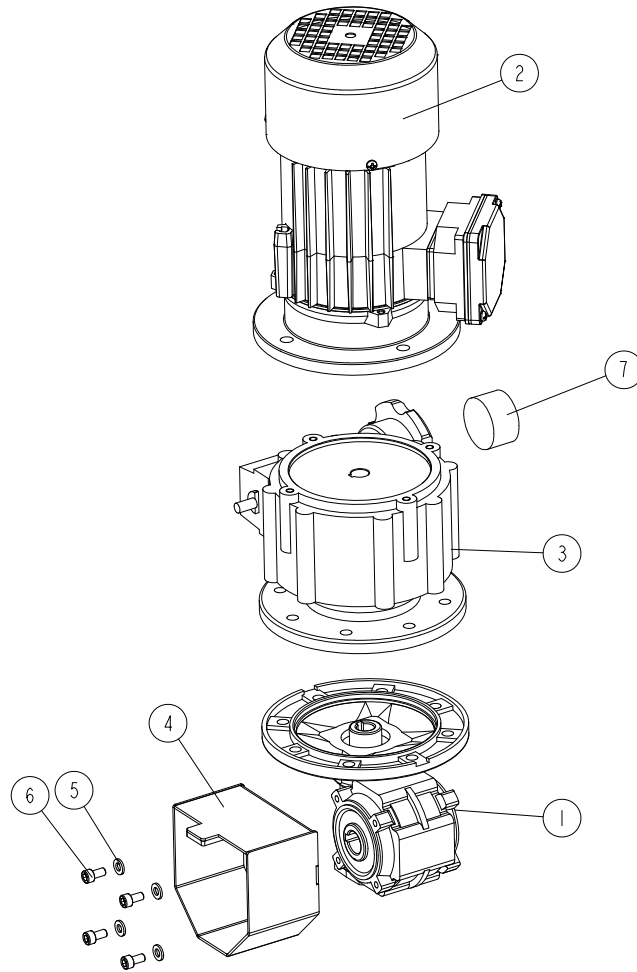
Ref	DESCRIPTION (* indicates parts available in assemblies only)	PART #	QTY
-	<b>SIDE CUTTER DRIVE</b>	533647	1
-	<b>SIDE CUTTER DRIVE US</b>	533647-U-US <sup>1</sup>	1
1	PLATE WELDMENT, MP200 MOTOR PAINTED MOUNT	533649-1	1
2	MOTOR 3SIEK90L2A, B14/C140, 3KW, 2900 R.P.M, 50HZ	537385	1
	MOTOR, INDUKTA 3SIEK90L2A 3KW IMV19 UL	537385-UL <sup>2</sup>	1
3	WASHER 8,4 ZC DIN 126 ISO 7091	F81054-1	8
4	SCREW M8X20 SHCS ZC 8.8 DIN 912 ISO 4762	F81002-30	8
5	WASHER 8,2 ZC SPRING LOCK DIN 127	F81054-4	4
6	BOLT M8X30 HH ZC FT 8.8 DIN 933	F81002-7	1
7	NUT M8 ZC 8 DIN 934	F81032-1	1
8	PULLEY, MULTI-GROOVE ALUMINIUM	533585	1
9	BELT, 8 PJ 457 MULTI-RIBBED	533680	1
10	SCREW M8X16 HSS W/FLAT POINT ZC 45H DIN	F81002-124	1

<sup>1</sup> Included in 535745-2U-US

<sup>2</sup> Included in 535745-2U-US

## 6.6 Feed Drive

535802\_001  
535802\_MANUAL



REF.	DESCRIPTION (* indicates parts available in assemblies only)	PART #	QTY
-	<b>MP360 FEED DRIVE</b>	535802	1
-	<b>MP360 US FEED DRIVE</b>	535802-U-US <sup>1</sup>	1
-	MOTOREDUCER KC40/P15 160/14+NF005+3SIEK 71X-2C/X	532808	1
-	MOTOREDUCER, KC 40/P15 160/14+NF005	532808-UL <sup>2</sup>	1
1	REDUCER KC40/P15 160/14 V6 H18	535749	1
2	MOTOR 3SIEK71X-2C/X 0.75kW, 2780/3340 r.p.m.	535747	1
	MOTOR 3SIEK71X-2C/X	535747-UL <sup>3</sup>	1
3	SPEED VARIATOR NF005 160/14 B5 V3	535748	1
	HANDLE VARIATOR NF003/005	546928-S	1
-	FEED GUARD - COMPLETE	535855	1
4	GUARD WELDMENT	535858-1	1
5	WASHER 6.4 ZC DIN 126 ISO 7091	F81053-1	4
6	SCREW M6X12 SHCS ZC 8.8 DIN 912 ISO 4762	F81001-87	4
7	INDICATOR, POSITION (GRAVITY DRIVE)	546884	1

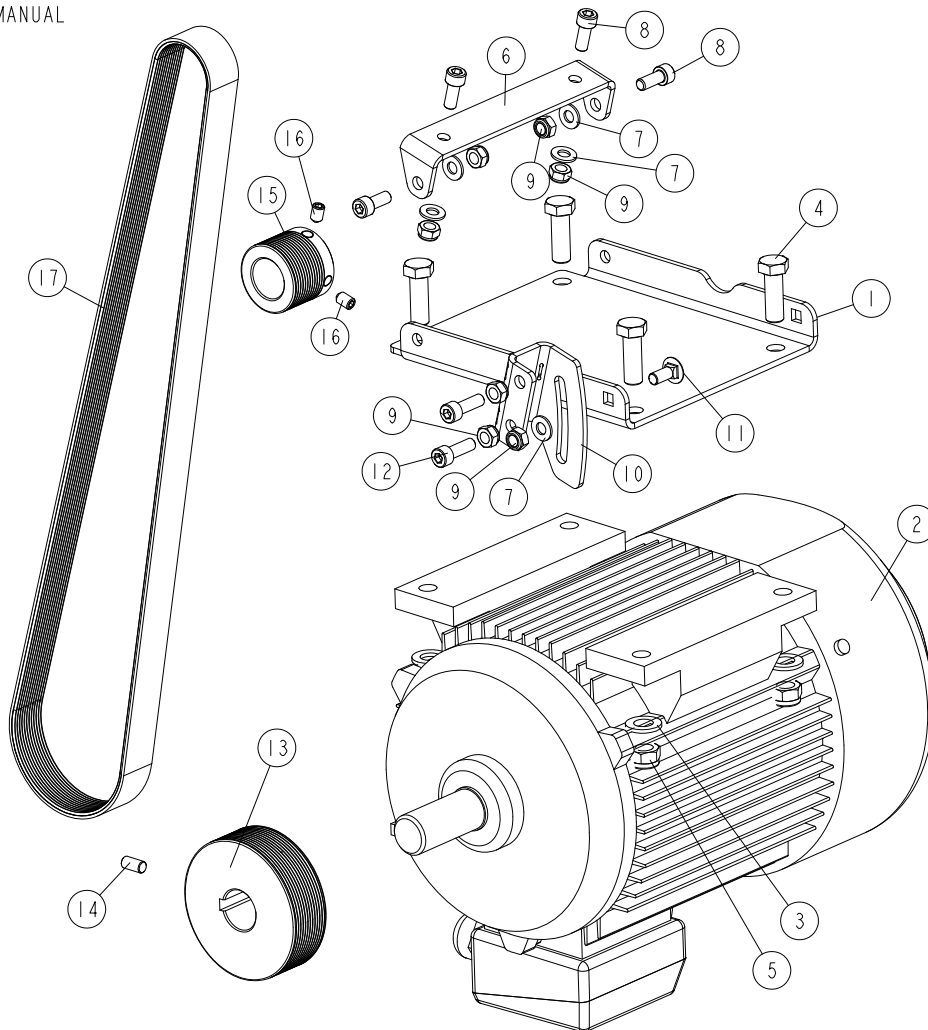
<sup>1</sup> Included in 535745-2U-US

<sup>2</sup> Included in 535745-2U-US

<sup>3</sup> Included in 535745-2U-US

## 6.7 Upper Horizontal Cutter Drive

535810\_001\_B  
535810\_MANUAL



REF.	DESCRIPTION (* indicates parts available in assemblies only)	PART #	QTY
-	<b>HORIZONTAL UPPER CUTTER DRIVE</b>	535810	1
-	<b>HORIZONTAL UPPER CUTTER DRIVE US</b>	535810-U-US 1	1
1	MOTOR MOUNTING PLATE	535806-1	1
2	MOTOR 3SIE112M2A, 5.5KW, 2900 R.P.M, 50HZ	537388	1
	MOTOR, INDUKTA 3SIE112M2A 5,5KW IMB3 UL	537388-UL <sup>2</sup>	1
3	WASHER 13 ZC DIN 126 ISO 7091	F81056-1	4
4	BOLT M12X35 HH ZC FT 8.8 DIN 933	F81004-24	4
5	NUT M12 ZC 8 NYLOCK DIN 982 ISO 7040	F81034-2	5
6	BRACKET	535807-1	1
7	WASHER 8,4 ZC DIN 126 ISO 7091	F81054-1	5
8	SCREW M8X20 SHCS ZC 8.8 DIN 912 ISO 4762	F81002-30	4
9	NUT M8 ZC 8 NYLOCK DIN 982 ISO 7040	F81032-2	7
10	BRACKET	535804-1	1



# MOTOR KITS

## Upper Horizontal Cutter Drive

---

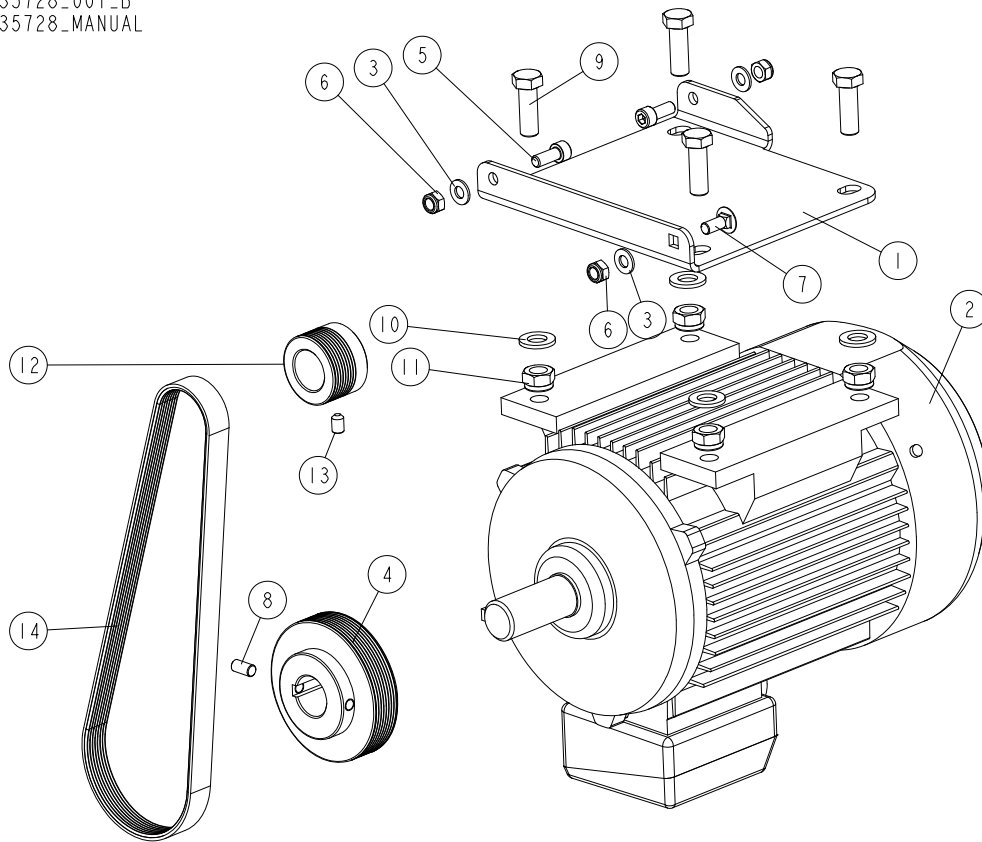
REF.	DESCRIPTION (* indicates parts available in assemblies only)	PART #	QTY	
11	BOLT M8X20 CARRIAGE ZC 8.8 DIN 603 ISO 8677	F81002-11	1	
12	SCREW M8X25 SHCS ZC 8.8 DIN 912 ISO 4762	F81002-21	2	
13	PULLEY MULTI-GROOVE ALUMINIUM	535808	1	
14	SCREW M8X16 HSS W/FLAT POINT ZC 45H DIN	F81002-124	1	
15	PULLEY MULTI-GROVE SMALL ALUMINIUM	535809	1	
16	SCREW M8X12 HSS W/CONE POINT ZC 45H DIN 914	F81002-105	2	
17	BELT MULTI-RIBBED PJ12 1301	547058	1	

<sup>1</sup> Included in 535745-2U-US

<sup>2</sup> Included in 535745-2U-US

## 6.8 Bottom Horizontal Cutter Drive

535728\_001\_B  
535728-MANUAL



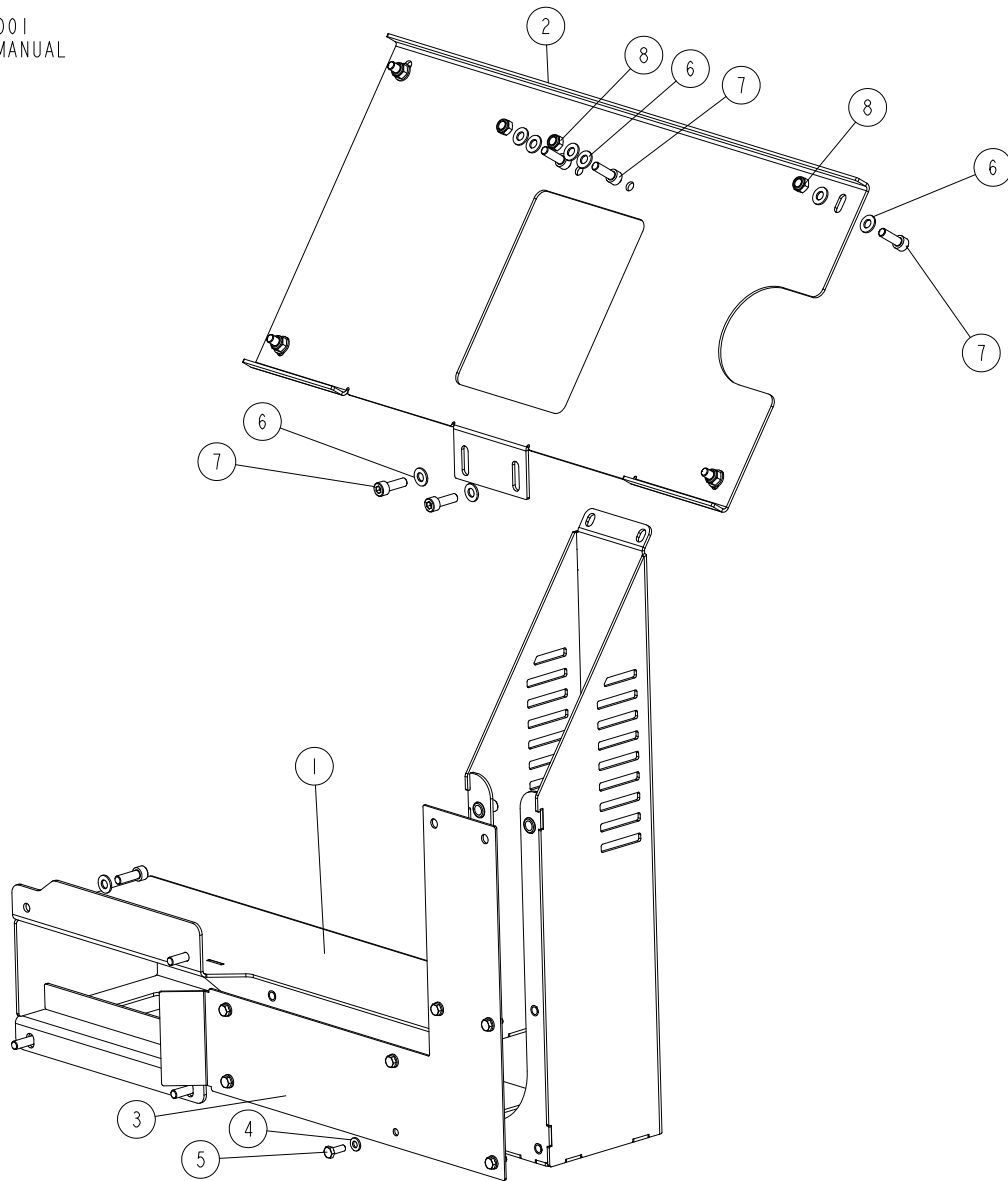
REF.	DESCRIPTION (* indicates parts available in assemblies only)	PART #	QTY
-	<b>HORIZONTAL BOTTOM CUTTER DRIVE</b>	535728	1
-	<b>HORIZONTAL BOTTOM CUTTER DRIVE US</b>	535728-U-US <sup>1</sup>	1
1	MOTOR MOUNTING PLATE	535727-1	1
2	MOTOR 3SIE100L2A, 4KW, 2900 R.P.M, 50HZ	537387	1
	MOTOR, INDUKTA 3SIE100L2A 4KW IMB3 UL	537387-UL <sup>2</sup>	1
3	WASHER 8,4 ZC DIN 126 ISO 7091	F81054-1	3
4	PULLEY, MULTI-GROOVE ALUMINIUM MP200 PRO	533585-P	1
5	SCREW M8X20 SHCS ZC 8.8 DIN 912 ISO 4762	F81002-30	2
6	NUT M8 ZC 8 NYLOCK DIN 982 ISO 7040	F81032-2	3
7	BOLT M8X20 CARRIAGE ZC 8.8 DIN 603 ISO 8677	F81002-11	1
8	SCREW M8X16 HSS W/FLAT POINT ZC 45H DIN	F81002-124	1
9	BOLT M12X35 HH ZC FT 8.8 DIN 933	F81004-24	4
10	WASHER 13 ZC DIN 126 ISO 7091	F81056-1	4
11	NUT M12 ZC 8 NYLOCK DIN 982 ISO 7040	F81034-2	4
12	PULLEY, MULTI-GROOVE SMALL ALUMINIUM	533586	1
13	SCREW M8X12 HSS W/CONE POINT ZC 45H DIN 914	F81002-105	1
14	BELT MULTI-RIBBED 8 PJ762	535803	1

<sup>1</sup> Included in 535745-2U-US

<sup>2</sup> Included in 535745-2U-US

## 6.9 Electrical Box Mount

535715\_001  
535715\_MANUAL

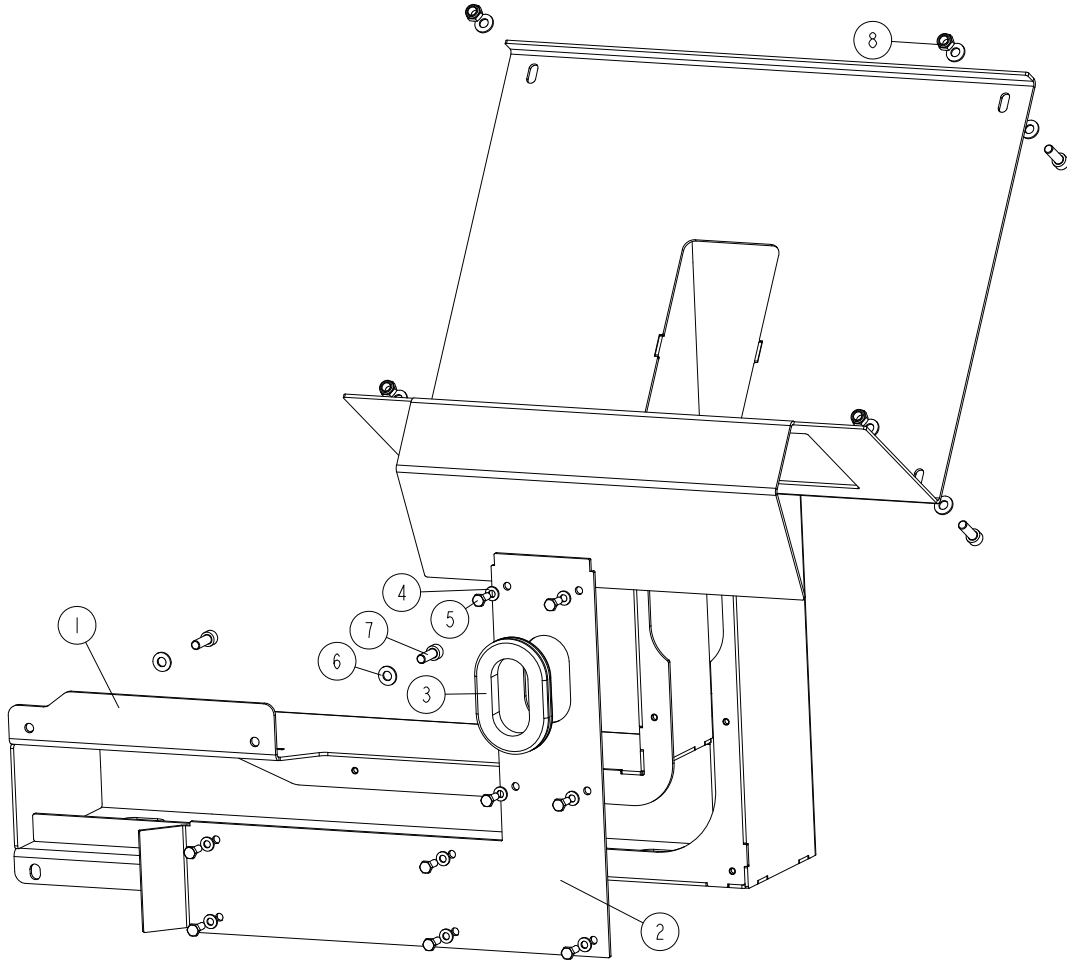


REF	DESCRIPTION (* indicates parts available in assemblies only)	PART #	QTY
-	<b>ELECTRICAL BOX MOUNT - COMPLETE</b>	535715	1
1	ELECTRICAL BOX MOUNT WELDMENT	535640-1	1
2	ELECTRICAL BOX PLATE	533713-1	1
3	COVER	535714-1	1
4	WASHER 6.4 ZC DIN 126 ISO 7091	F81053-1	7
5	BOLT M6X16 HH ZC FT 8.8 DIN 933	F81001-15	7
6	WASHER 8.4 ZC DIN 126 ISO 7091	F81054-1	18
7	SCREW M8X25 SHCS ZC 8.8 DIN 912 ISO 4762	F81002-21	12
8	NUT M8 ZC 8 NYLOCK DIN 982 ISO 7040	F81032-2	6



## 6.10 Electrical Box Mount - Complete

577461\_001  
 577461\_MANUAL

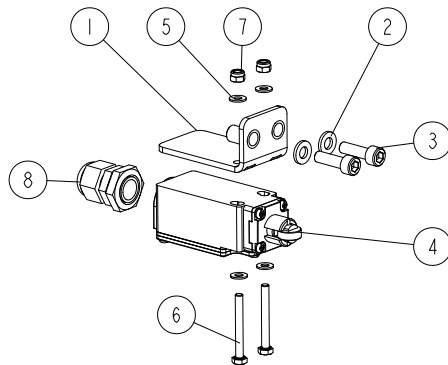


REF.	DESCRIPTION (* indicates parts available in assemblies only)	PART #	QTY
-	<b>ELECTRICAL BOX MOUNT - COMPLETE</b>	577461 <sup>1</sup>	1
1	ELECTRICAL BOX MOUNT WELDMENT	577462-1	1
2	COVER	577464-1	1
3	GROMMET, RUBBER	089532	1
4	WASHER, 6.4 FLAT ZINC	F81053-1	9
5	BOLT, M6X16-8.8 HEX HEAD FULL THREAD ZINC	F81001-15	9
6	WASHER, 8.4 FLAT ZINC	F81054-1	12
7	SCREW, M8X25 -8.8 HEX SOCKET HEAD CAP	F81002-21	8
8	NUT, M8-8-B HEX NYLON ZINC LOCK	F81032-2	4

<sup>1</sup> Included in 535745-2U-US

### 6.11 Safety Switch (1)

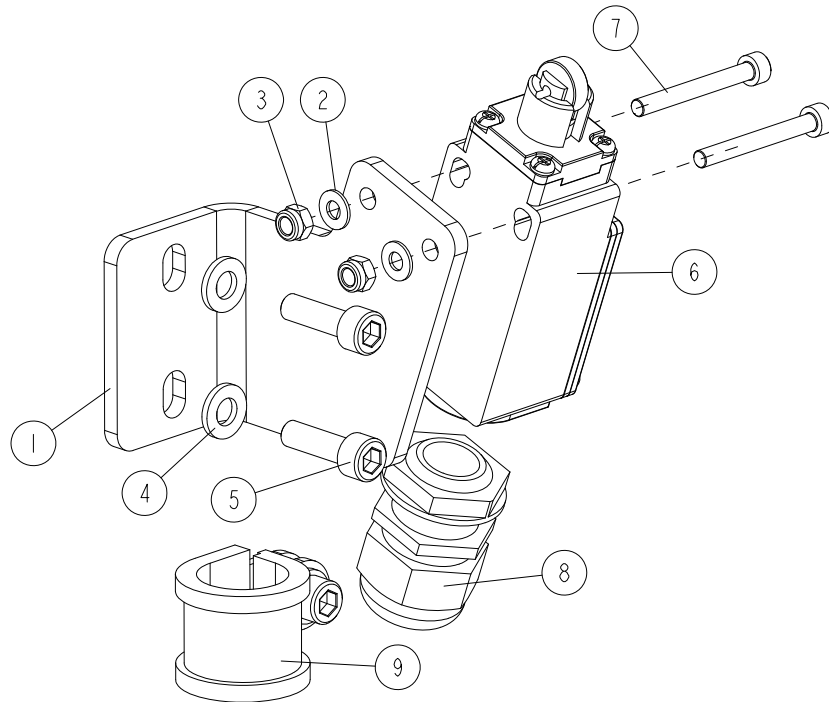
535840\_001  
535840\_MANUAL



REF.	DESCRIPTION (* indicates parts available in assemblies only)	PART #	QTY
-	<b>SAFETY SWITCH ASSEMBLY 1</b>	535840	1
1	SWITCH BRACKET - COMPLETE (1)	535842	1
2	WASHER 6.4 ZC DIN 126 ISO 7091	F81053-1	2
3	SCREW M6X20 SHCS ZC 8.8 DIN 912 ISO 4762	F81001-22	2
4	SWITCH, FA134 Z11 SAFETY	100910	1
5	WASHER 4.3 ZC DIN 126 ISO 7091	F81051-2	4
6	BOLT M4X35 HH ZC FT 8.8 DIN 933	F81011-7	2
7	NUT M4 ZC 8 NYLOCK DIN 982 ISO 7040	F81029-1	2
8	CABLE GLAND DP9/H	F81096-2	1

## 6.12 Safety Switch (2)

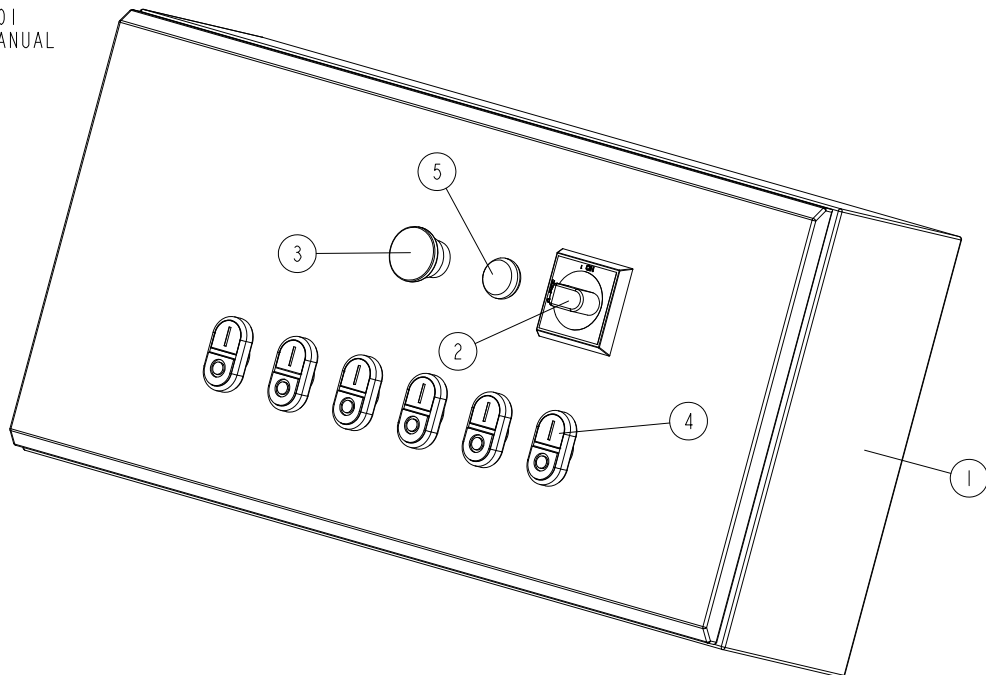
535844\_001  
535844\_MANUAL



REF.	DESCRIPTION (* indicates parts available in assemblies only)	PART #	QTY
-	<b>SAFETY SWITCH ASSEMBLY (2)</b>	535844	1
1	SWITCH BRACKET (2)	535843-1	1
2	WASHER 4.3 ZC DIN 126 ISO 7091	F81051-2	2
3	NUT M4 ZC 8 NYLOCK DIN 982 ISO 7040	F81029-1	2
4	WASHER 6.4 ZC DIN 126 ISO 7091	F81053-1	3
5	SCREW M6X20 SHCS ZC 8.8 DIN 912 ISO 4762	F81001-22	3
6	SWITCH, KMB2S11 SAFETY	100910	1
7	SCREW, M4X35 8.8 HEX SOCKET HEAD CAP ZINC	F81011-34	2
8	GLAND, DP 20 HML CABLE	F81096-41	1
9	CLIP, RSGU 1.20/20 RETAINING	F81087-2	1

### 6.13 MP360H Electrical Box

532800\_001  
532800\_MANUAL



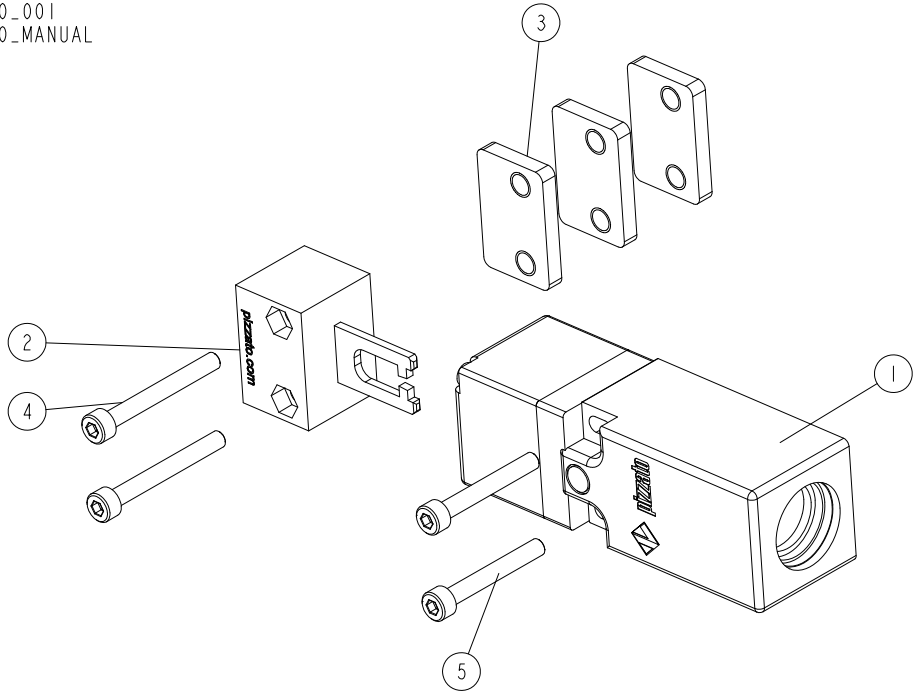
REF.	DESCRIPTION (* indicates parts available in assemblies only)	PART #	QTY
-	ELECTRICAL BOX MP360H - COMPLETE	532800 <sup>1</sup>	1
-	ELECTRICAL BOX MP360B - COMPLETE	532800-2 <sup>2</sup>	1
1	ELECTRICAL BOX MP360	532842	1
2	HANDLE, OHB S2A1 AB SWITCH	502312-1	1
3	BUTTON, EMERGENCY STOP	502315	1
4	SWITCH XB5AW331 M5	532796	6
5	LIGHT, XB7EV7BP WHITE CONTROL	519612	1

<sup>1</sup> Optional power supply kit (cable with plug) - 539809-5

<sup>2</sup> Optional power supply kit (cable with plug) - 539809-4

6.14 Safety Switch Assembly (3)

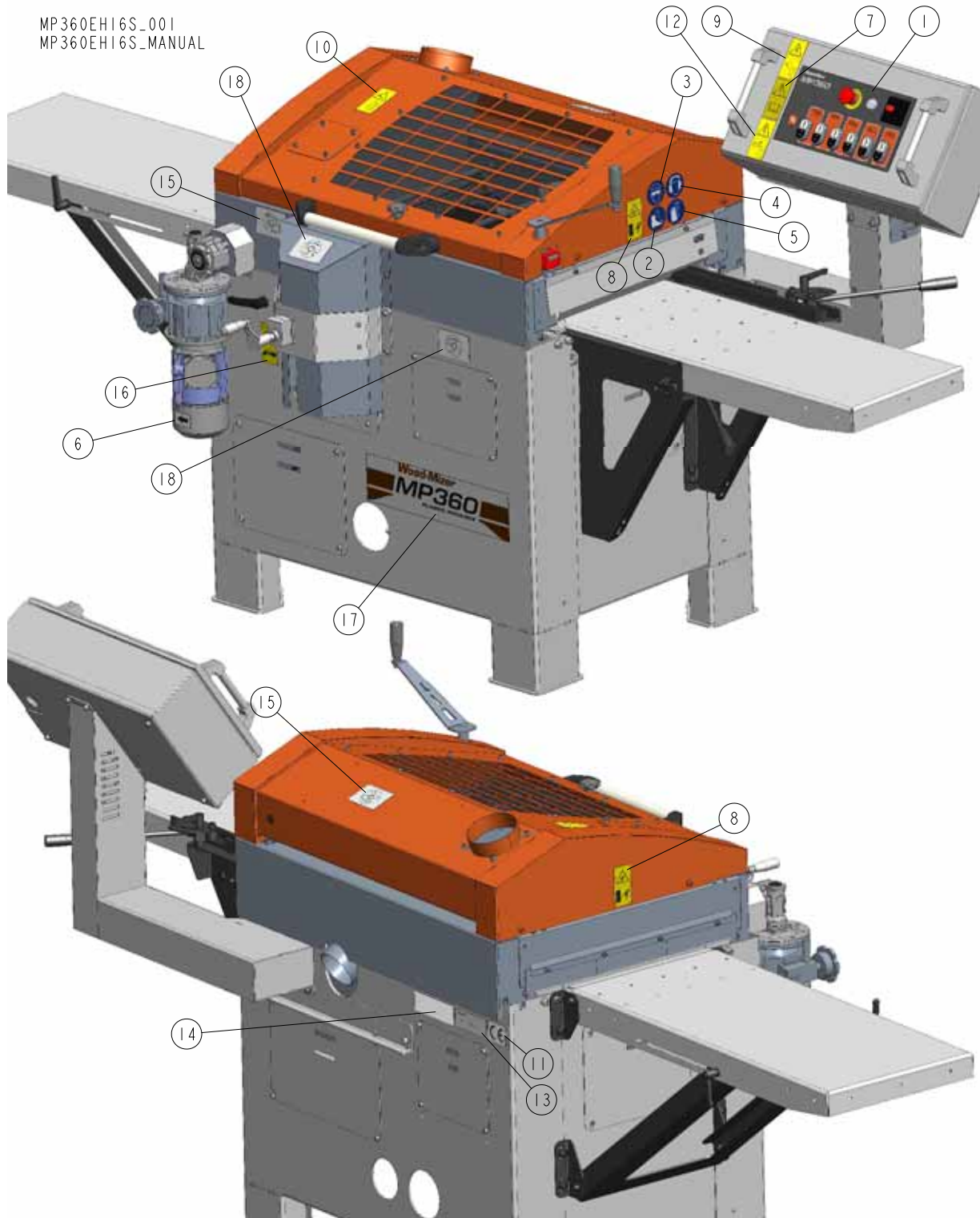
537620\_001  
537620\_MANUAL



REF.	DESCRIPTION (* indicates parts available in assemblies only)	PART #	QTY
-	<b>SWITCH ASSEMBLY, SAFETY (3)</b>	537620	1
1	SWITCH, FR 693-M2 SAFETY	537623	1
2	KEY- VF KEYD3	537622	1
3	PLATE	537621-1	3
4	SCREW, M4X35 8.8 HEX SOCKET HEAD CAP ZINC	F81011-34	2
5	SCREW, M4X30-8.8 DIN 912 ISO 4762 HEX SOCKET HEAD CAP ZINC	F81000-85	2

## SECTION 7 DECALS

### 7.1 Decals MP360



REF.	DESCRIPTION (* indicates parts available in assemblies only)	PART #	QTY
-	DECAL KIT, MP360	539446	1
1	DECAL, MP360 CONTROL PANEL	539447	1
2	DECAL, WEAR SAFETY BOOTS - PICTOGRAM (SMALL)	501465-1	1

REF.	DESCRIPTION (* indicates parts available in assemblies only)	PART #	QTY
3	DECAL, WEAR SAFETY GOGGLES - PICTOGRAM (SMALL)	S12004G-1	1
4	DECAL, WEAR PROTECTIVE EAR MUFFS - PICTOGRAM (SMALL)	S12005G-1	1
5	DECAL USE SAFETY GLOVES (SMALL)	512107-1	1
6	DECAL, MOTOR DIRECTION	S20097	1
7	DECAL, READ THE OPERATION MANUAL	096317	1
8	DECAL, KEEP A SAFE DISTANCE - PICTOGRAM	099221V	2
9	DECAL, HAZARDOUS VOLTAGE INSIDE THE ELECTRIC BOX (PICTOGRAM)	096316	1
10	DECAL, CLOSE GUARDS BEFORE OPERATING	099220	1
11	DECAL, CE CERTIFIED SAWMILL (SMALL)	P85070	1
12	DECAL, REMOVE THE PLUG BEFORE OPENING THE ELECTRIC BOX - PICTOGRAM	096319	1
13	DECAL, EUROPEAN HEADQUARTER ADDRESS	015841	1
14	DECAL, VIN	VIN	1
15	DECAL, SHAFT ROTATION DIRECTION	539444	2
16	DECAL, USE SPEED VARIATOR ONLY WHEN FEED IS TURNED ON	535252	1
17	DECAL MP360 PLANER TYPE	539445	1
18	DECAL, MP160 SHAFT ROTATION DIRECTION	536401	2