

Wood-Mizer®

Parts Manual

MP180 E6S

rev. A1.01

MP180 E7S-V

rev. A1.01



Safety is our #1 concern! Read and understand all safety information and instructions before operating, setting up or maintaining this machine.

Form #2181

Table of Contents

Section-Page

SECTION 1	GENERAL INFORMATION	1-1
1.1	How To Use the Parts List.....	1-1
1.2	Sample Assembly	1-1
SECTION 2	PLANER/MOULDER, MP180	2-1
2.1	Covers	2-1
2.2	Feed Assembly	2-2
2.3	Cutter Assembly 537687	2-3
2.4	Drive Shaft (533580)	2-4
2.5	Chain tensioner (537712)	2-5
2.6	Anti-Kickback Fingers. 533125	2-6
2.7	Upper Outfeed Table (No. 537690)	2-7
2.8	Belt Cover. 534394	2-8
2.9	Decals	2-9
2.10	Additional Part Kit	2-11
2.11	Guard. 537714	2-12
2.12	Rod. 537718	2-13
2.13	Cover. 537710	2-14
2.14	Protective Guard Adjustment Assembly. 537720	2-15
2.15	Slide Bearing Assembly (No. 533520)	2-17
2.16	Foot Set (No. 536996)	2-18
2.17	Cutter assembly 534785	2-19
2.18	Helical Top Cutter assembly THH180TC-S	2-21
2.19	Cutter Guard (No. 534220)	2-22
2.20	Bearing assembly 534225	2-23
2.21	Chip channel assembly 534218	2-24
2.22	Small guard assembly 534182	2-25
2.23	Mounting bar assembly 534357	2-26
2.24	Fence assembly 534185	2-27
2.25	Adjuster Assembly, Fence Panel (No. 534213)	2-29
2.26	Up/Down Assembly 537700	2-30
2.27	Knob and scale assembly 534760	2-32
2.28	Chain Tension assembly 533570	2-33
2.29	Bottom Table. 537705	2-34
2.30	Chip Breaker. 543554	2-36
2.31	Clamp Roller Assembly (No. 533550)	2-37
2.32	Fence Plate. 537715	2-38
2.33	Fence. 537674	2-39
2.34	Scale Indicator Assembly. 537738	2-40
2.35	Pusher 534166	2-41
2.36	Cutter protective cover assembly 534752	2-42
2.37	Chip Duct 534180	2-43
2.38	Upper infeed table 534355	2-44

Table of Contents

Section-Page

2.39	Front guide rail assembly 534375	2-45
2.40	Rear guide rail assembly 534376	2-46
2.41	Infeed table adjustment handle 534380	2-47

SECTION 3 MOTOR KITS, 537694, 537695

3-1

3.1	MP180 Motor Kits PRO 537694, ECO 537695	3-1
3.2	Cutting Head Drive 534196	3-3
3.3	Horizontal Cutter Drive 537728	3-5
3.4	Electrical Box Mount 537704	3-7
3.5	ECO Feed drive 533638	3-8
3.6	ECO Cover 537696	3-9
3.7	MP180 UL Cover 570008	3-10
3.8	MP180 UL Cover Service Kit	3-11
3.9	Electrical Box (Part No. 537670)	3-12
3.10	Side Cutter Drive 533647	3-13
3.11	Emergency stop switch assembly 535669	3-15
3.12	Safety switch assembly 537708	3-16
3.13	PRO Feed drive 533650	3-17

SECTION 1 GENERAL INFORMATION

1.1 How To Use the Parts List

- Use the index above to locate the assembly that contains the part you need.
- Go to the appropriate section and locate the part in the illustration.
- Use the number pointing to the part to locate the correct part number and description in the table.
- Parts shown indented under another part are included with that part.
- Parts marked with a diamond (◆) are only available in the assembly listed above the part.

See the sample table below. Sample Part #A01111 includes part F02222-2 and subassembly A03333. Subassembly A03333 includes part S04444-4 and subassembly K05555. The diamond (◆) indicates that S04444-4 is not available except in subassembly A03333. Subassembly K05555 includes parts M06666 and F07777-77. The diamond (◆) indicates M06666 is not available except in subassembly K05555.

1.2 Sample Assembly				
REF.	DESCRIPTION (◆ Indicates Parts Available In Assemblies Only)	PART #	QTY	
	Sample Assembly, Complete (Includes All Indented Parts Below)	A01111	1	
1	Sample Part	F02222-22	1	
	Sample Subassembly (Includes All Indented Parts Below)	A03333	1	
2	Sample Part (◆ Indicates Part Is Only Available With A03333)	S04444-4	1	◆
	Sample Subassembly (Includes All Indented Parts Below)	K05555	1	
3	Sample Part (◆ Indicates Part Is Only Available With K05555)	M06666	2	◆
4	Sample Part	F07777-77	1	

To Order Parts:

- From Europe call our European Headquarters and Manufacturing Facility in Kolo, Poland at **+48-63-2626000**. From the continental U.S., call our toll-free Parts hotline at **1-800-525-8100**. Have your customer number, vehicle identification number, and part numbers ready when you call. From other international locations, contact the Wood-Mizer distributor in your area for parts.

Office Hours:

Country	Monday - Friday	Saturday	Sunday
Poland	7-15	Closed	Closed
US	8 a.m.- 5 p.m.	8 a.m.- 12 p.m.	Closed

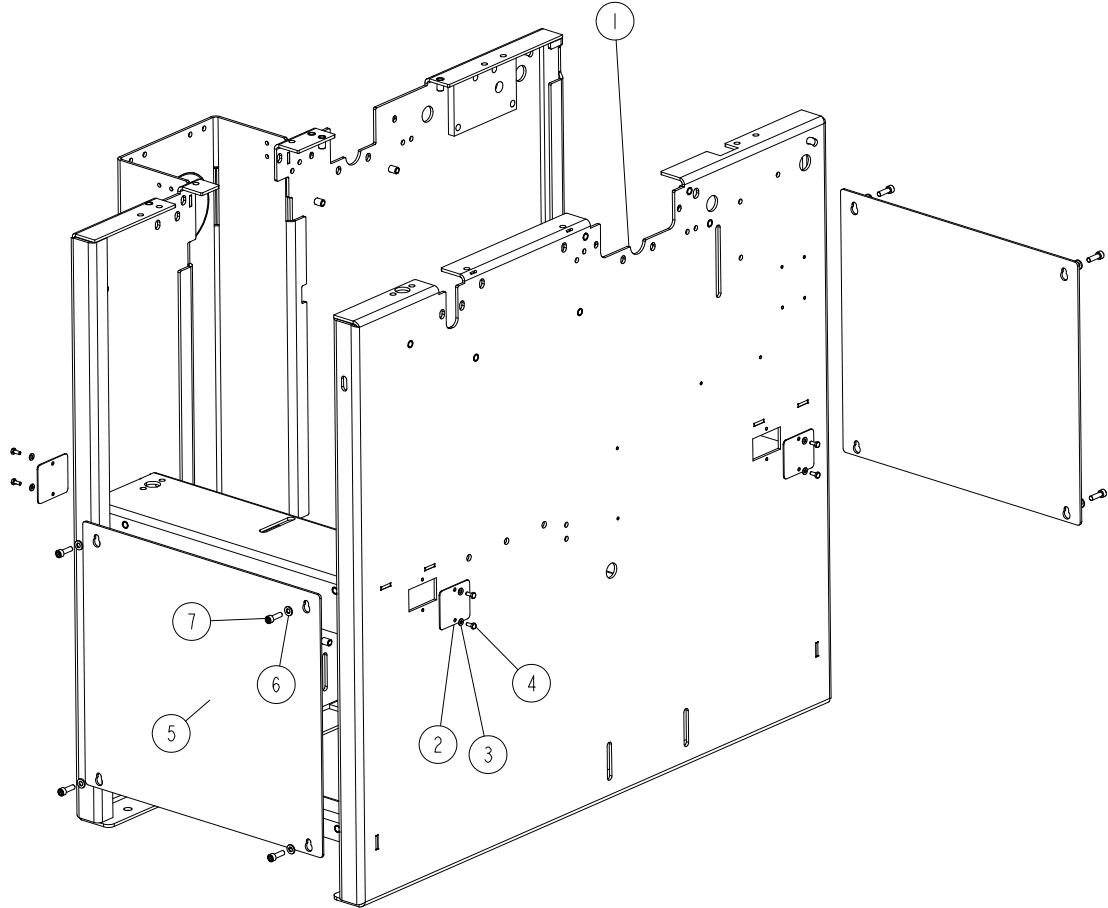


CAUTION! It is strongly recommended that only original spare parts be used.

SECTION 2 PLANER/MOULDER, MP180

2.1 Covers

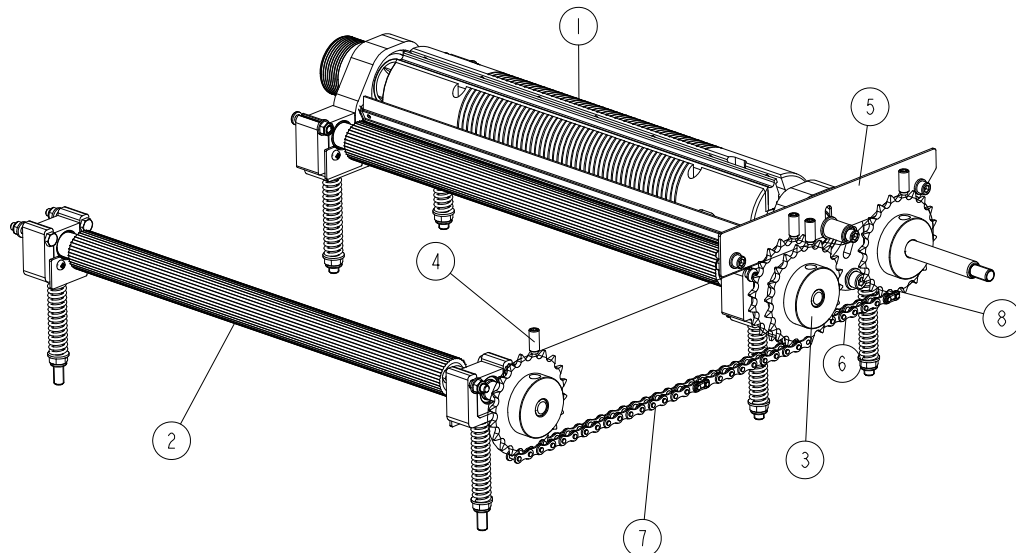
537800_001
537800_MANUAL



Ref	DESCRIPTION (* indicates parts available in assemblies only)	PART #	QTY
1	MP180 BODY WELDMENT	537680-1	1
2	VISION COVER	536995-1	4
3	WASHER 4,3 ZC DIN 126 ISO 7091	F81051-2	8
4	SCREW M4X10 DIN933(A2)/ISO 4017 STAINLES	F81000-27	8
5	PLATE, SIDE	533096-1	2
6	WASHER 6,4 ZC DIN 126 ISO 7091	F81053-1	8
7	SCREW M6X20 SHCS ZC 8.8 DIN 912 ISO 4762	F81001-22	8

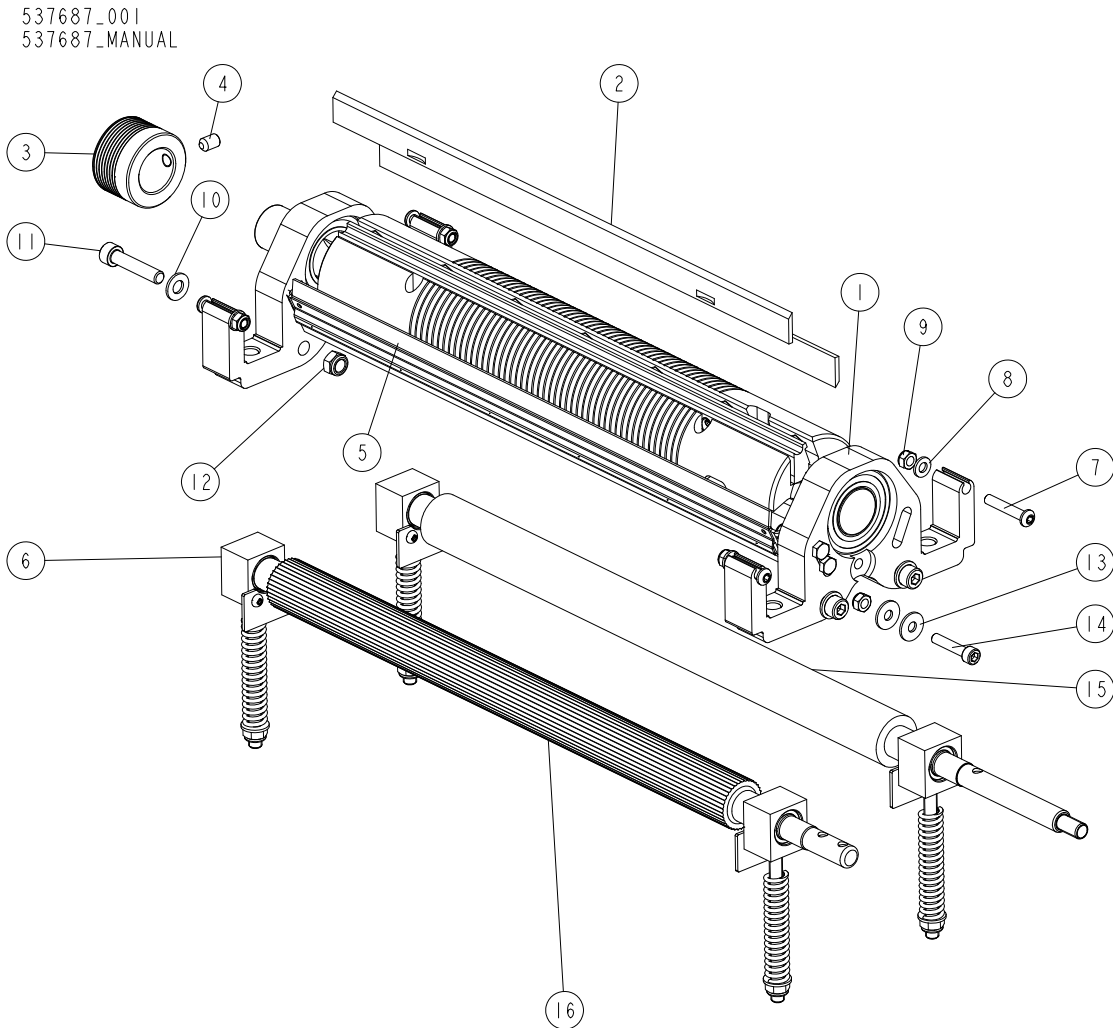
2.2 Feed Assembly

537688-001
537688_MANUAL



Ref	DESCRIPTION (* indicates parts available in assemblies only)	PART #	QTY
-	MP180 FEED ASSEMBLY	537688	1
1	CUTTER ASSEMBLY See Section 2.3	537687	1
2	DRIVE SHAFT ASSEMBLY See Section 2.5	533580	1
3	SPROCKET Z=20; 1/2"X 3/16" CHAIN 083-1)	533109	4
4	SCREW M8X20 HSS W/DOG POINT ZC 45H DIN 915 ISO 4028	F81002-77	4
5	CHAIN TENSIONER ASSEMBLY See Section 2.5	537712	1
6	CHAIN 083-1;P=1/2"; LENGHT=0.4953 M (39 LINKS)	534393	1
7	CHAIN 083-1;P=1/2"; LENGHT=0.8636 M (67 LINKS+1 OFFSET LINK)	537689	1
8	CONNECTING LINK FOR CHAIN 083-1	533128	2

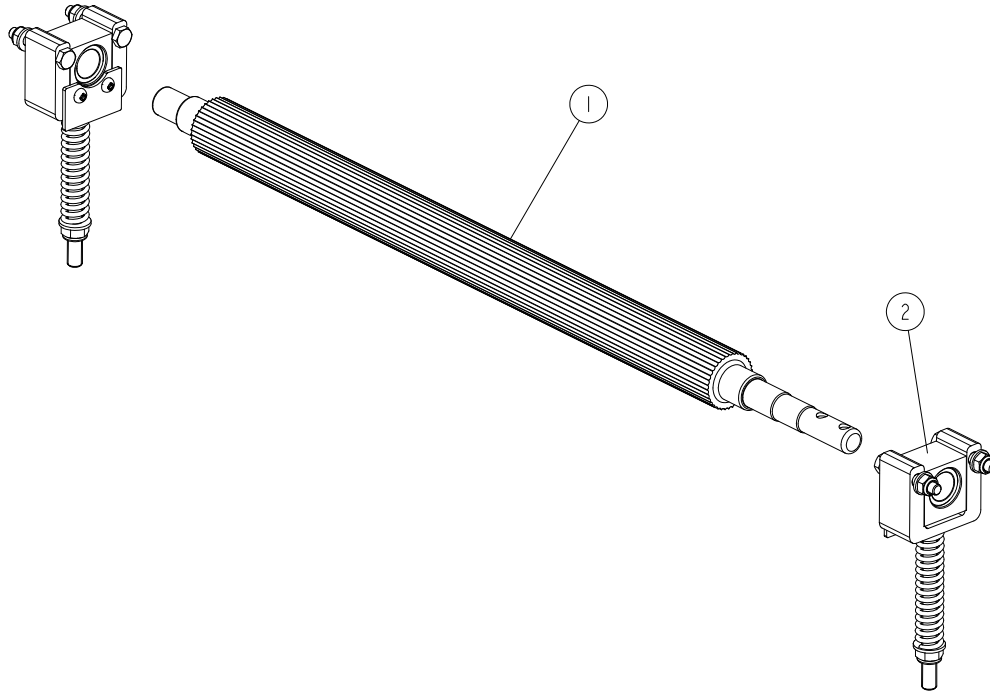
2.3 Cutter Assembly 537687



Ref	DESCRIPTION (* indicates parts available in assemblies only)	PART #	QTY
-	CUTTER ASSEMBLY	537687	1
1	CUTTER ASSEMBLY See Section 2.17	534785	1
2	PLANER KNIFE WITH NOTCHES	TPK410.20MP	2
3	PULLEY, MULTI-GROOVE SMALL ALUMINIUM	533586	1
4	SCREW M8X12 HSS W/CONE POINT ZC 45H DIN 914	F81002-105	1
5	MILLING COVER See Section 2.19	534220	1
6	SLIDE BEARING ASSEMBLY See Section 2.20	534225	4
7	HEXAGON SOCKET BUTTON HED SCROW M6X35 ZC 10.9 ISO 7380-1	F81001-91	4
8	WASHER 6,4 ZC DIN 126 ISO 7091	F81053-1	4
9	NUT M6 ZC 8 NYLOCK DIN 982 ISO 7040	F81031-2	6
10	WASHER 8,4 ZC DIN 126 ISO 7091	F81054-1	4
11	SCREW M8X40 SHCS ZC 8.8 DIN 912 ISO 4762	F81002-29	4
12	NUT M8 ZC 8 NYLOCK DIN 982 ISO 7040	F81032-2	4
13	WASHER 6,5 ZC FENDER DIN 9021 ISO 7093	F81053-11	4
14	SCREW M6X30 SHCS ZC 8.8 DIN 912 ISO 4762	F81001-42	2
15	SHAFT W/PROTECTIVE COVER	533512	1
16	SHAFT, STEEL DRIVE	533513-1	1

2.4 Drive Shaft (533580)

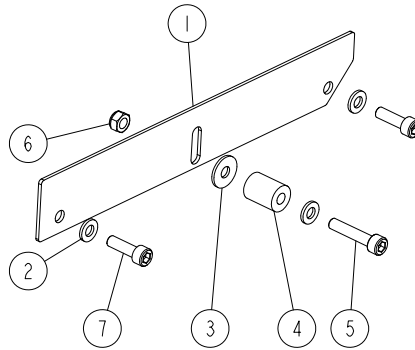
533580-001-A
 533580-MANUAL



REF	DESCRIPTION (* indicates parts available in assemblies only)	PART #	QTY	
-	DRIVE SHAFT ASSEMBLY	533580	1	
1	SHAFT, STEEL DRIVE	533513-1	1	
2	BEARING ASSEMBLY, SLIDE See Section 2.15	533520	2	

2.5 Chain tensioner (537712)

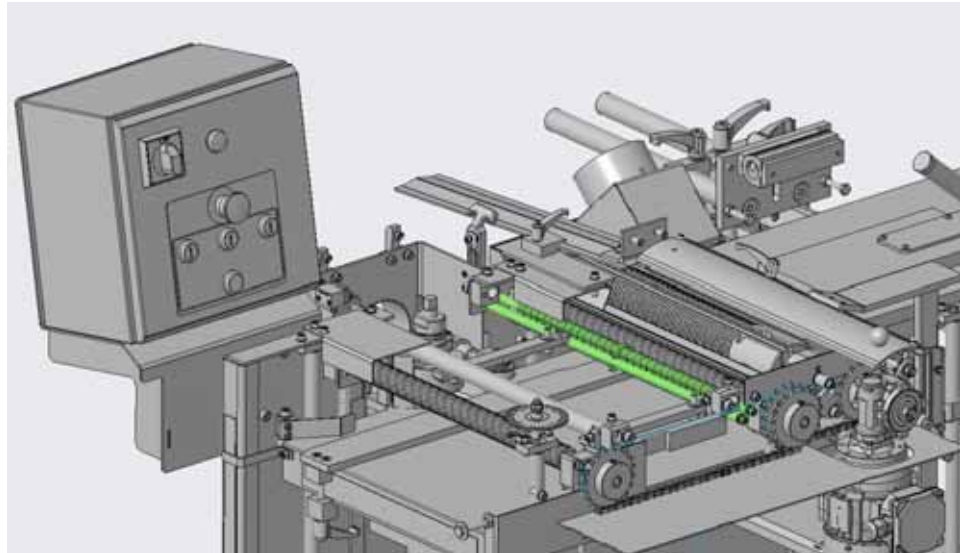
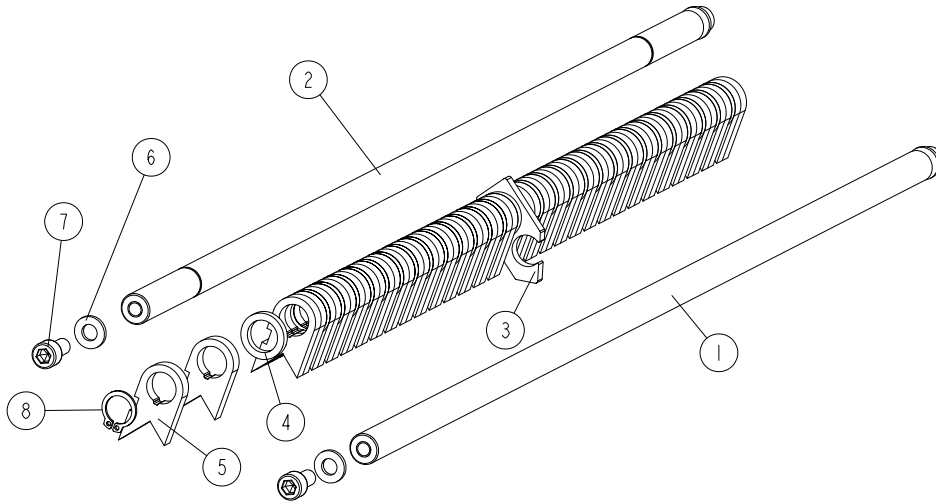
537712_001
537712_MANUAL



Ref	DESCRIPTION (* indicates parts available in assemblies only)	PART #	QTY
-	CHAIN TENSIONER ASSEMBLY	537712	1
1	CHAIN TENSIONER PLATE	537711-1	1
2	WASHER 6,4 ZC DIN 126 ISO 7091	F81053-1	3
3	WASHER 6,5 ZC FENDER DIN 9021 ISO 7093	F81053-11	1
4	BUSHING, SPACER	R80671-6	1
5	SCREW M6X30 SHCS ZC 8.8 DIN 912 ISO 4762	F81001-42	1
6	NUT M6 ZC 8 NYLOCK DIN 982 ISO 7040	F81031-2	1
7	SCREW M6X20 SHCS ZC 8.8 DIN 912 ISO 4762	F81001-22	2

2.6 Anti-Kickback Fingers. 533125

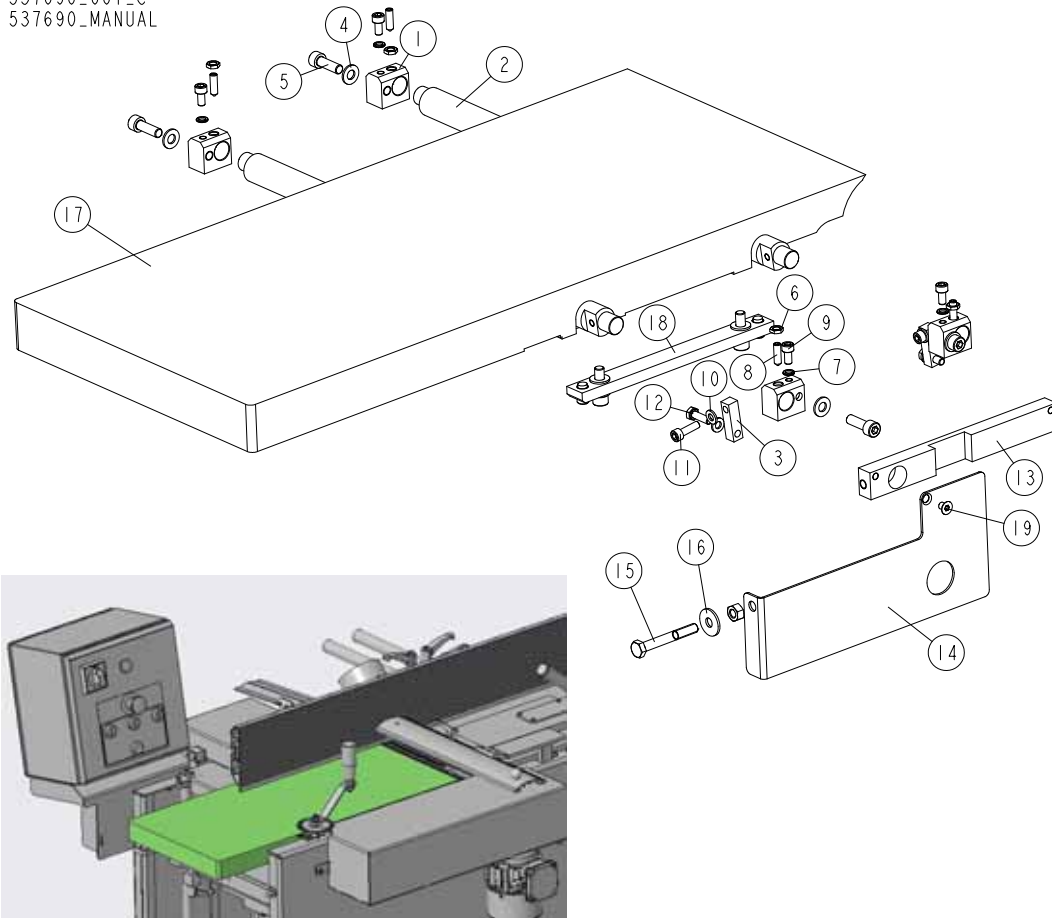
533125_001_B
 533125_MANUAL



Ref	DESCRIPTION (* indicates parts available in assemblies only)	PART #	QTY
-	ANTI-KICKBACK FINGERS ASSEMBLY	533125	1
1	SHAFT	533092-1	2
2	PLATE	533124-1	1
3	WASHER, DIA.1940	533123	30
4	ANTI-KICKBACK FINGER	533126	30
5	WASHER 6,4 ZC DIN 126 ISO 7091	F81053-1	4
6	SCREW M6X12 SHCS ZC 8.8 DIN 912 ISO 4762	F81001-87	4
7	RING RETAINING OR Z12 PN-81/M-85111 DIN 471	F81090-14	2

2.7 Upper Outfeed Table (No. 537690)

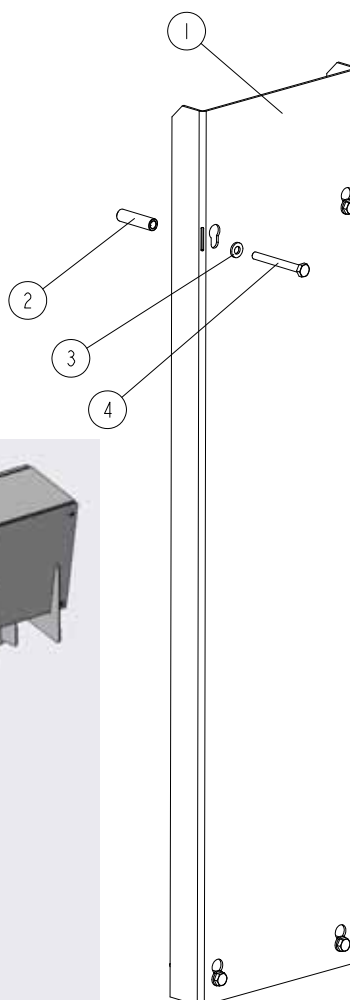
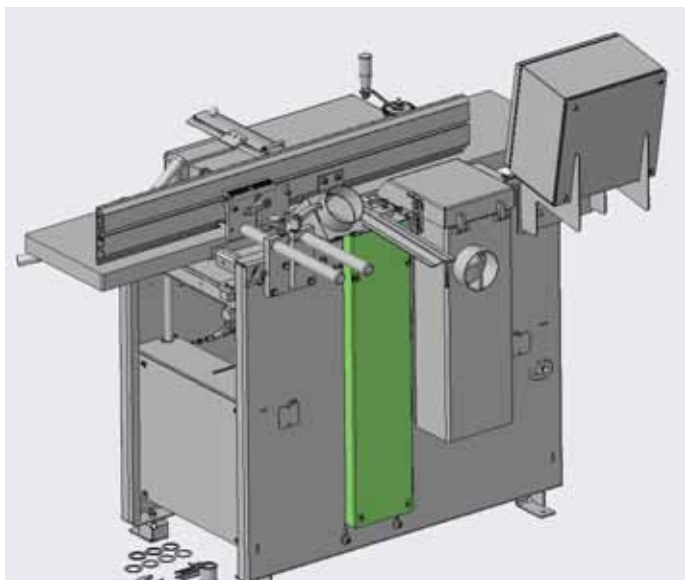
537690_001_C
537690_MANUAL



REF	DESCRIPTION (u indicates parts available in assemblies only)	PART #	QTY
-	UPPER OUTFEED TABLE - COMPLETE	537690	1
1	BLOCK	561711	4
2	SHAFT, ECCENTRIC	534204	2
3	BLOCK	534206-1	2
4	WASHER, 8.4 FLAT ZINC	F81054-1	4
5	SCREW, M8X25 -8.8 HEX SOCKET HEAD CAP	F81002-21	4
6	NUT, M8 DIN 439 ISO 4035 THIN	F81031-14	4
7	WASHER, Z 6.1 SPLIT LOCK ZINC	F81053-3	4
8	SCREW M6X20 45H PN84-M/82315	F81001-127	4
9	SCREW M6X12 SHCS ZC 8.8 DIN 912 ISO 4762	F81001-87	4
10	WASHER, 6.4 FLAT ZINC	F81053-1	4
11	SCREW, M6X20 8.8 HEX SOCKET HEAD CAP ZIN	F81001-22	2
12	BOLT, M6X20 8.8 HEX HEAD FULL THREAD ZIN	F81001-2	2
13	BAR	534207-1	1
14	PLATE WELDMENT	537693-1	1
15	BOLT, M8X60 8.8 HEX HEAD ZINC	F81002-54	1
16	WASHER, ISO 7093-1-8-200 HV-A2E	F81054-11	1
17	OUTPUT TABLE FOR MP160	537736-1	1
18	MOUNTING BAR ASSEMBLY	534357	2
19	SCREW, M6X8 HSFHS ZC 10.9 DIN7991	F81001-69	1

2.8 Belt Cover. 534394

534394_001
534394_MANUAL



Ref	DESCRIPTION (* indicates parts available in assemblies only)	PART #	QTY
-	BELT COVER, ASSEMBLY	534394	1
1	BELT TRANSMISSION COVER	534158-1	1
2	BUSHING 6.3/10-38	534209-1	4
3	WASHER 6,4 ZC DIN 126 ISO 7091	F81053-1	4
4	SCREW M6X55-8.8-FE/ZN5 ISO 4014	F81001-73	4

2.9 Decals

MP180EH6S_001_B
MP180EH6S_MANUAL



Ref	DESCRIPTION (* indicates parts available in assemblies only)	PART #	QTY
-	DECAL KIT, MP180	547601	1
1	DECAL, KEEP A SAFE DISTANCE PICTOGRAM	099221H	2
2	DECAL, WEAR SAFETY BOOTS PICTOGRAM, SMALL	501465-1	1
3	DECAL, WEAR SAFETY GOGGLES (PICTOGRAM) - SMALL	S12004G-1	1



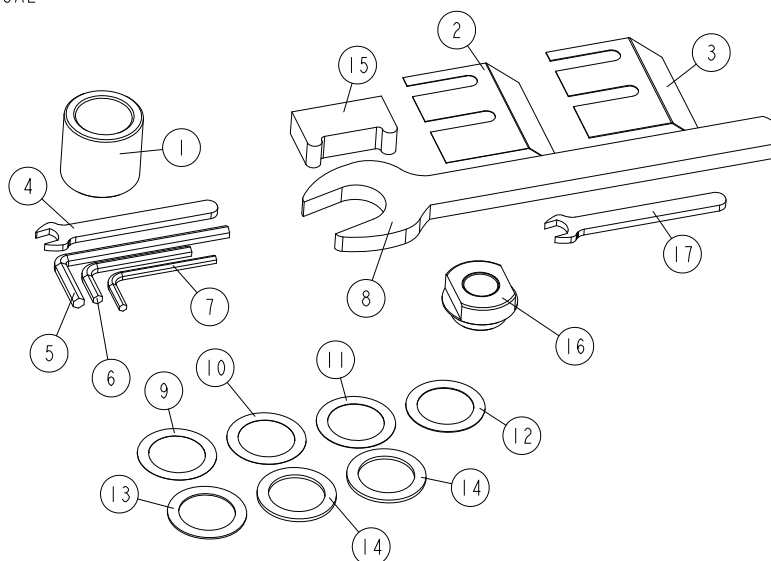
Planer/Moulder, MP180

Decals

Ref	DESCRIPTION (* indicates parts available in assemblies only)	PART #	QTY	
4	DECAL, WEAR PROTECTIVE EAR MUFFS (PICTOGRAM) SMALL	S12005G-1	1	
5	DECAL, MOTOR DIRECTION	S20097	1	
6	DECAL, READ THE OPERATOR MANUAL	096317	2	
7	DECAL, HAZARDOUS VOLTAGE INSIDE THE ELECTRIC BOX (PICTOGRAM)	096316	1	
8	DECAL, CLOSE GUARDS BEFORE OPERATING	099220	2	
9	DECAL, CE CERTIFIED SAWMILL - SMALL	P85070	1	
10	DECAL, REMOVE THE PLUG BEFORE OPENING THE ELECTRIC BOX (PIC-	096319	1	
11	DECAL, VIN	VIN	1	
12	DECAL, EUROPEAN HEADQUARTER ADDRESS	015841	1	
13	DECAL, USE THE CONTINUOUSLY VARIABLE TRANSMISSION WHEN THE	535252	1	
14	DECAL, MP180 TYPE	547602	1	
15	DECAL, ELECTRIC BOX	537676	1	
16	DECAL	534203	1	
17	DECAL, MP200 ROUND SCALE	533577	1	
18	DECAL, HORIZONTAL SCALE	537706	2	
19	DECAL, VERTICAL SCALE	533579	1	
20	DECAL, MAXIMUM CUTTING THICKNESS MP200	535155	1	
21	DECAL, MAXIMUM CUTTING THICKNESS MP180	535303	1	
22	DECAL, WARNING ROTATING SIDE CUTTER	551139	1	
23	DECAL, WEAR SAFETY GLOVES (PICTOGRAM) - SMALL	510080-1	1	
24	DECAL, MP160 SHAFT ROTATION DIRECTION	536401	1	

2.10 Additional Part Kit

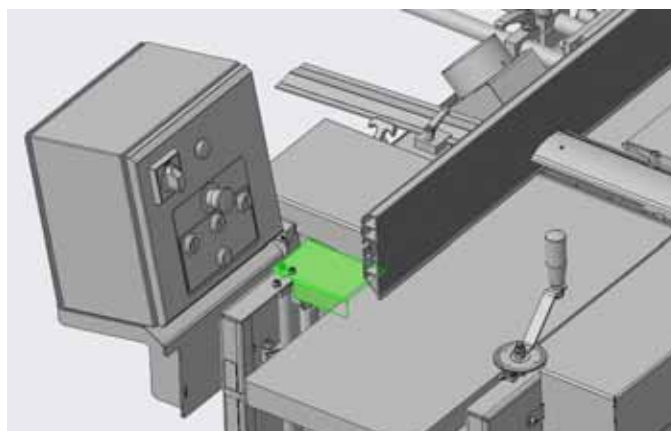
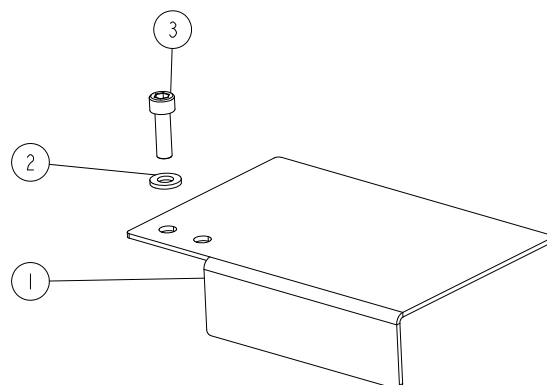
537668_001_EN_A
537668_MANUAL



LP.	OPIS (* wskazuje części dostępne jedynie w zespołach)	Nr części	Ilość
-	MP200 ADDITIONAL PART KIT	537668	1
1	BUSHING 30/42-40.2 ZINC-PLATED	535848-1	1
2	PLATE, 0.3 MM CHIP BREAKER	537648	1
3	PLATE, 0.5 MM CHIP BREAKER	533502	1
-	MP160 WRENCH KIT	535185	1
4	WRENCH, 10 FLAT	541315	1
5	WRENCH, 6MM ALLEN	535186	1
6	WRENCH, 5 ALLEN	092915	1
7	WRENCH, 4MM ALLEN	093368	1
8	WRENCH 30 DIN 894	537649	1
9	WASHER 30/42-0.1 ZC DIN 988	F81069-6	1
10	WASHER 30/42-0.2 ZC DIN 988	F81069-5	1
11	WASHER 30/42-0.3 ZC DIN 988	F81069-4	1
12	WASHER 30/42-0.5 ZC DIN 988	F81069-3	1
13	WASHER 30/42-1 ZC DIN 988	F81069-2	1
14	WASHER 30/42-2 ZC DIN 988	F81069-1	2
15	KNIFE ALIGNMENT TOOL	534770	1
16	NUT, M20X1.5 LEFT	542621-1	1
17	WRENCH, 12 FLAT	564873	1

2.11 Guard. 537714

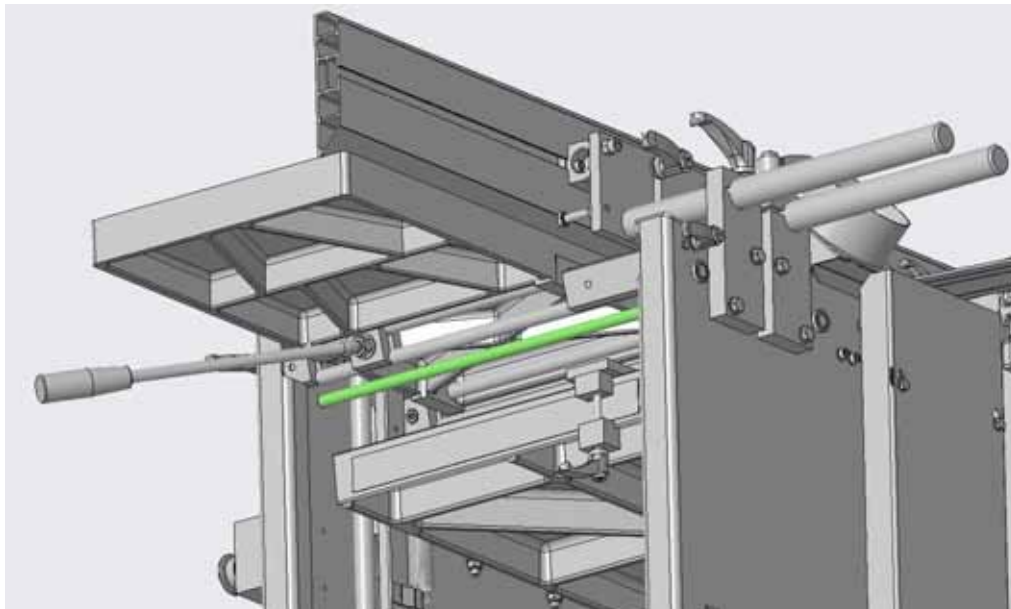
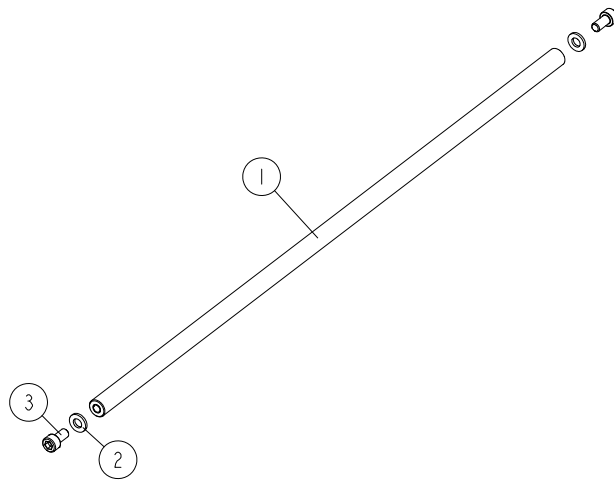
537714_001
537714_MANUAL



Ref	DESCRIPTION (* indicates parts available in assemblies only)	PART #	QTY
-	GUARD 1 ASSEMBLY	537714	1
1	GUARD 1	537713-1	1
2	WASHER 6,4 ZC DIN 126 ISO 7091	F81053-1	1
3	SCREW M6X20 SHCS ZC 8.8 DIN 912 ISO 4762	F81001-22	1

2.12 Rod. 537718

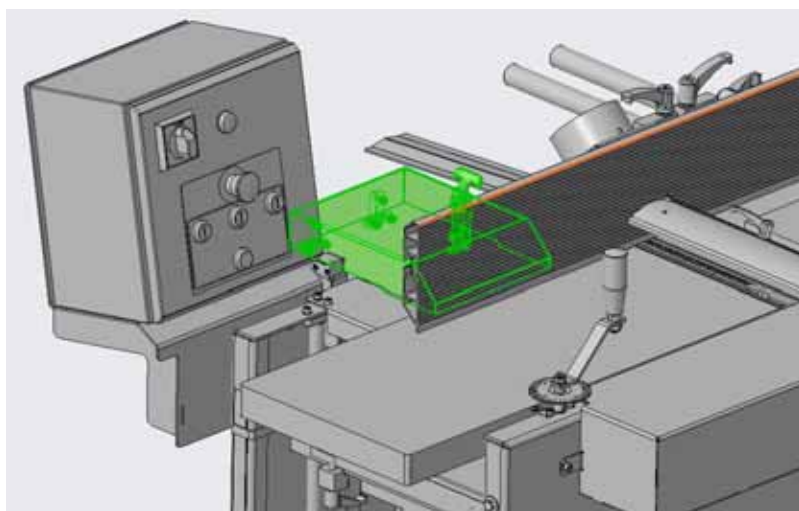
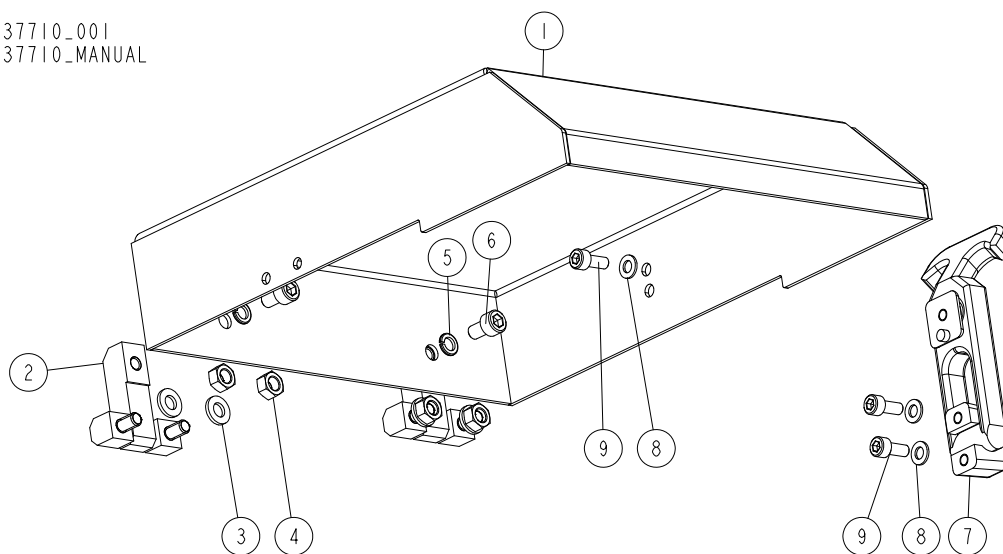
537718_001_A
537718_MANUAL



REF	DESCRIPTION (u indicates parts available in assemblies only)	PART #	QTY
-	COMPLETE ROD	537718	1
1	SHAFT	533092-1	1
2	WASHER, 6.4 FLAT ZINC	F81053-1	2
3	SCREW M6X12 SHCS ZC 8.8 DIN 912 ISO 4762	F81001-87	2

2.13 Cover. 537710

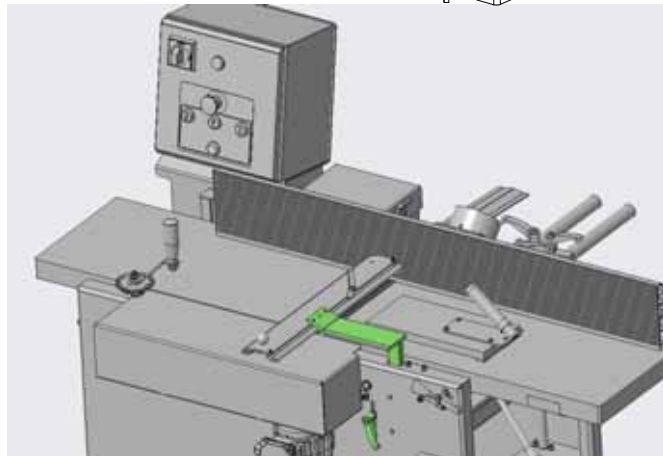
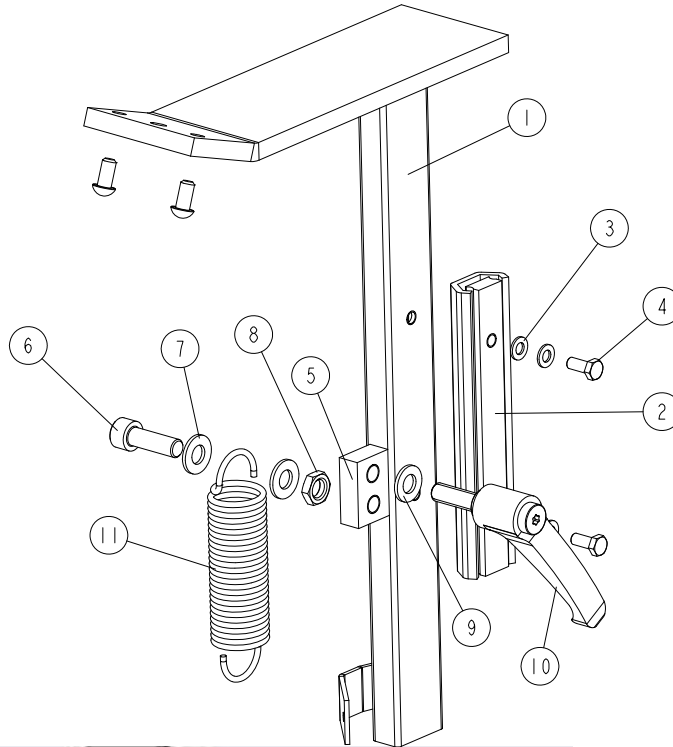
537710_001
537710_MANUAL



Ref	DESCRIPTION (* indicates parts available in assemblies only)	PART #	QTY
-	COMPLETE COVER	537710	1
1	COVER PLATE	537709-1	1
2	HINGE K1143.0630028 (KIPP)	537616	2
3	WASHER 6,4 ZC DIN 126 ISO 7091	F81053-1	2
4	NUT M6 ZC 8 DIN 934	F81031-1	2
5	WASHER 6,1 ZC SPRING LOCK DIN 127	F81053-3	2
6	BOLT M6X10 SHCS ZC PT 8.8 DIN 912 ISO 4762	F81001-12	2
7	SELF-ADJUSTING LATCH SOUTHCO NR ART.258-4825	537617	1
8	WASHER 5,3 ZC DIN 126 ISO 7091	F81052-1	3
9	SCREW M5X12 SHCS ZC 8.8 DIN 912 ISO 4762	F81000-53	3

2.14 Protective Guard Adjustment Assembly. 537720

537720_001_A
 537720_MANUAL



REF	DESCRIPTION (◆ indicates parts available in assemblies only)	PART #	QTY
-	PROTECTIVE GUARD ADJUSTMENT ASSEMBLY	537720	1
1	PROTECTIVE GUARD ADJUSTMENT ASSEMBLY	537723-1	1
2	LINEAR GUIDE	534167	1
3	WASHER, M5, FLAT ZINC	F81052-1	4
4	BOLT, M5X12-5.8 HEX HEAD FULL THREAD ZIN	F81000-5	2
5	BLOCK, HOUSING MOUNT ASSEMBLY	534168-1	1
6	SCREW M8X25 SHCS ZC 8.8 DIN 912 ISO 4762	F81002-21	1
7	WASHER, 8.4 FLAT, ZINC	F81054-1	2
8	NUT, M8-04-FE/ZN ISO4035 HEX THIN	F81032-8	1
9	WASHER, 8.4/16-1.6 PA66	546948	1

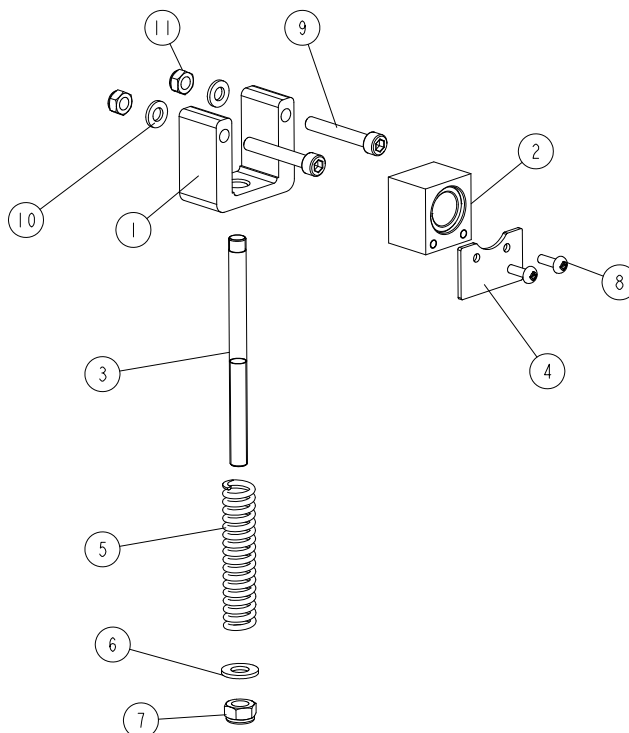


Planer/Moulder, MP180

Protective Guard Adjustment Assembly. 537720

REF	DESCRIPTION (◆ indicates parts available in assemblies only)	PART #	QTY	
10	ADJUSTABLE HANDLE, ERZ.63P-M8X25	533591	1	
11	SPRING, 25X105X2,5	534169	1	

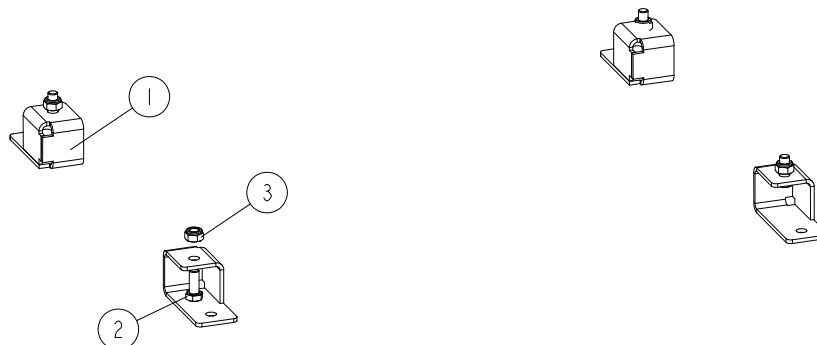
2.15 Slide Bearing Assembly (No. 533520)

533520_001_B
533520_MANUAL

REF	DESCRIPTION (◆ indicates parts available in assemblies only)	PART #	QTY
-	BEARING ASSEMBLY, SLIDE	533520	1
1	HOUSING, SLIDE BEARING	533514	1
2	SLIDE BLOCK ASSEMBLY	537575	1
3	ROD, SHAFT TENSION	546898-1	1
4	COVER, RUBBER	533516	1
5	SPRING	533519-1	1
6	WASHER, 8.4 FLAT,ZINC	F81054-1	1
7	NUT, M8-8-B HEX NYLON ZINC LOCK	F81032-2	1
8	SCREW M4X12 PHILLIPS ZC 5.8 DIN 7985	F81011-43	2
9	BOLT M6X40 HEX	F81001-124	2
10	WASHER, M6, FLAT,ZINC	F81053-1	2
11	NUT, M6-8-B HEX NYLON ZINC LOCK	F81031-2	2

2.16 Foot Set (No. 536996)

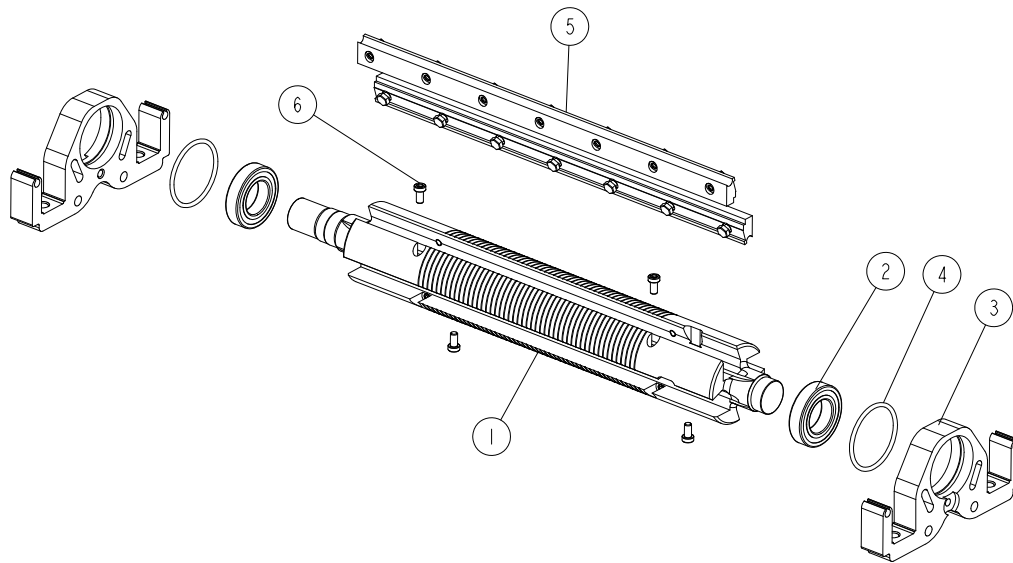
536996_001
536996_MANUAL



REF.	DESCRIPTION (* indicates parts available in assemblies only)	PART #	QTY
-	FOOT SET	536996	1
1	FOOT	535828-1	4
2	BOLT, M8X20MM, HEX HEAD,GR 5.8 ZINC,	F81002-4	4
3	NUT,M8-8-B,HEX,NYLON LOCK ZINC, NUT, M8-8-B HEX NYLON ZINC LOCK	F81032-2	4

2.17 Cutter assembly 534785

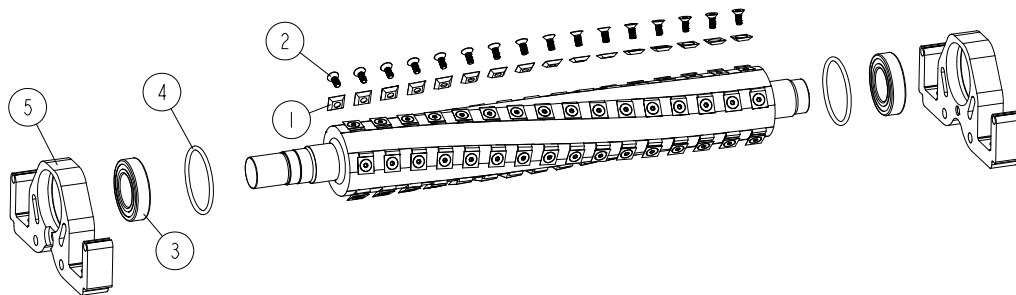
534785_001
534785_MANUAL



REF.	DESCRIPTION (* indicates parts available in assemblies only)	PART #	QTY	
-	CUTTER ASSEMBLY	534785	1	
1	SHAFT, MAIN	260-138	1	
2	BEARING, 6006 2RSR	096191	2	
3	HOUSING, CUTTER PLUMMER BLOCK	534222-1	2	
4	O-RING, BEARING HOUSING	534224	2	
5	WEDGE SET, MOUNTING	241-060	1	
6	SCREW, M6X12-10.9 DIN 7984 LOW HEX SOCKET HEAD CAP	F81001-80	4	

2.18 Helical Top Cutter assembly THH180TC-S

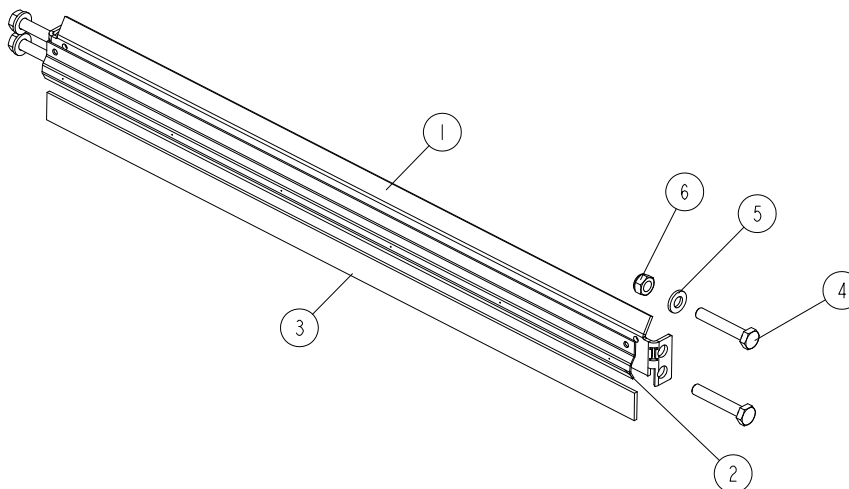
THH180TC-S_001
THH180TC-S



REF	DESCRIPTION (◆ indicates parts available in assemblies only)	PART #	QTY
-	KIT, MP180 HELICAL TOP CUTTERHEAD	THH180TC-S	1
-	CUTTERHEAD, HELICAL THH260TC	THH260TC	1
1	INSERT, REPLACEMENT CARBIDE	TIK19HM	80
2	SCREW, 10-32X1/2 FH BO; TORX PLUS	F05004-325	80
3	BEARING, 6006 2RSR	096191	2
4	O-RING, BEARING HOUSING	534224	2
5	HOUSING, CUTTER PLUMMER BLOCK	534222-1	2

2.19 Cutter Guard (No. 534220)

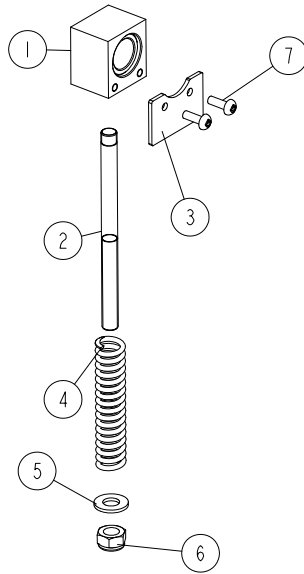
534220_001_A
534220_MANUAL



REF.	DESCRIPTION (* indicates parts available in assemblies only)	PART NO.	QTY
-	GUARD, CUTTER - COMPLETE	534220	1
	GUIDE ASSEMBLY, SAWDUST	535830	
	MOUNT ASSEMBLY, RUBBER STRIP	535827	
1	PLATE, RUBBER STRIP MOUNT	534159	1
2	PLATE, RUBBER STRIP CLAMP	534212	1
3	STRIP, RUBBER	534221	1
4	BOLT, M6x35-8.8 HEX HEAD ZINC	F81001-71	4
5	WASHER, 6.4 FLAT ZINC	F81053-1	4
6	NUT, M6-8-B HEX NYLON ZINC LOCK	F81031-2	4

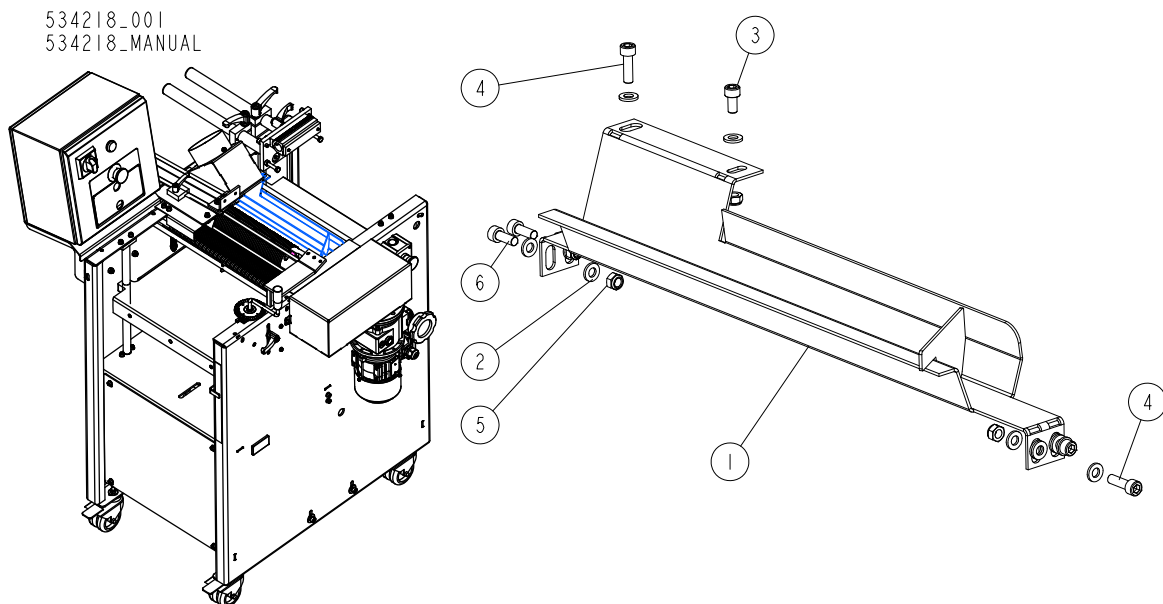
2.20 Bearing assembly 534225

534225_001_B
534225_MANUAL



REF	DESCRIPTION (◆ indicates parts available in assemblies only)	PART #	QTY	
-	SLIDE BEARING ASSEMBLY	534225	1	
1	SLIDE BLOCK ASSEMBLY	537575	1	
2	ROD, SHAFT TENSION	546898-1	1	
3	COVER, RUBBER	533516	1	
4	SPRING	533519-1	1	
5	WASHER, 8.4 FLAT,ZINC	F81054-1	1	
6	NUT, M8-8-B HEX NYLON ZINC LOCK	F81032-2	1	
7	SCREW M4X12 PHILLIPS ZC 5.8 DIN 7985	F81011-43	2	

2.21 Chip channel assembly 534218

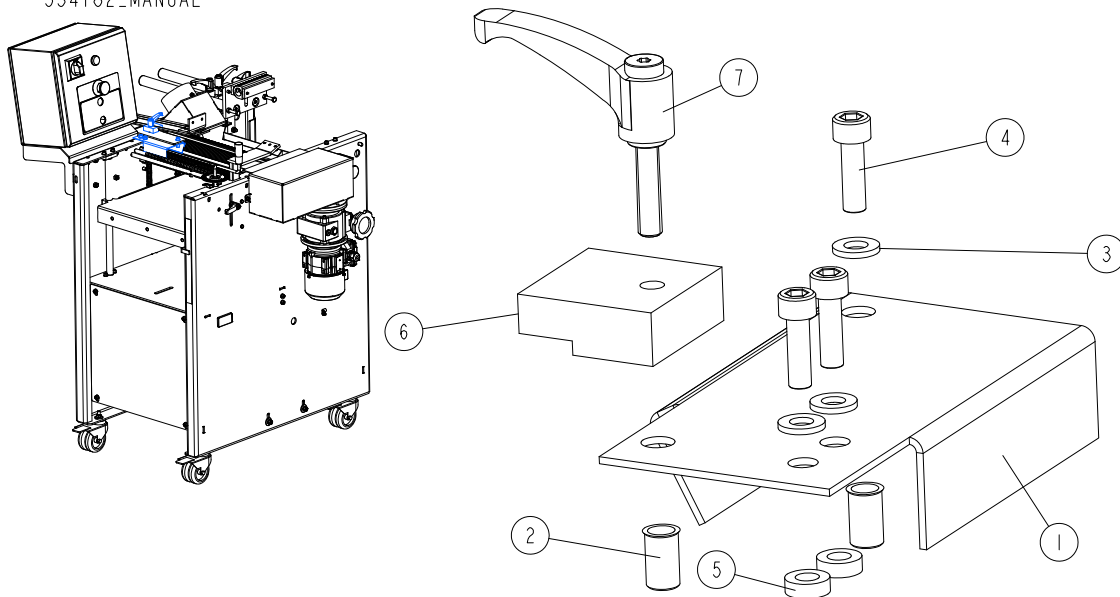


534218_001
534218_MANUAL

REF.	DESCRIPTION (* indicates parts available in assemblies only)	PART #	QTY
-	CHIP CHANNEL ASSEMBLY	534218	1
1	CHANNEL, CHIP W/PLATE	534217-1	1
2	WASHER, 6.4 FLAT ZINC	F81053-1	14
3	SCREW, ISO 4762-M6X12-8.8-A2E HEX SOCKET HEAD CAP	F81001-87	1
4	SCREW, M6X20 8.8 HEX SOCKET HEAD CAP ZINC	F81001-22	3
5	NUT, M6-8-B HEX NYLON ZINC LOCK	F81031-2	5
6	SCREW, M6X16 8.8 HEX SOCKET HEAD CAP ZINC	F81001-21	2

2.22 Small guard assembly 534182

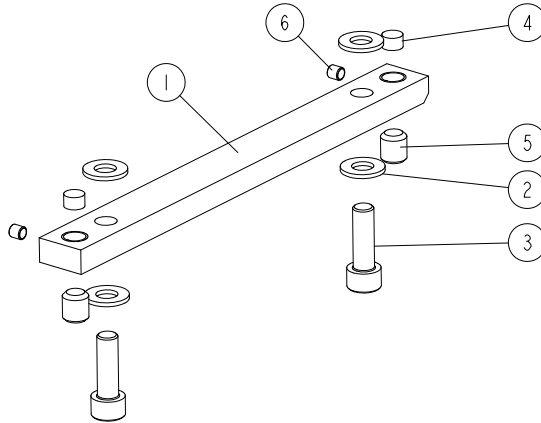
534182_001
534182_MANUAL



REF.	DESCRIPTION (* indicates parts available in assemblies only)	PART #	QTY
-	GUARD ASSEMBLY, SMALL	534182	1
1	GUARD, SMALL	534181-1	1
2	NUT, O-NIT-6-17-ZN RIVET	F81031-13	2
3	WASHER, 6.4 FLAT ZINC	F81053-1	3
4	SCREW, M6X20 8.8 HEX SOCKET HEAD CAP ZINC	F81001-22	3
5	WASHER, SPACER	534183	2
6	BLOCK, GUARD CLAMPING	534789-1	1
7	HANDLE, ERZ.44 P-M6X40 ADJUSTABLE	534790	1

2.23 Mounting bar assembly 534357

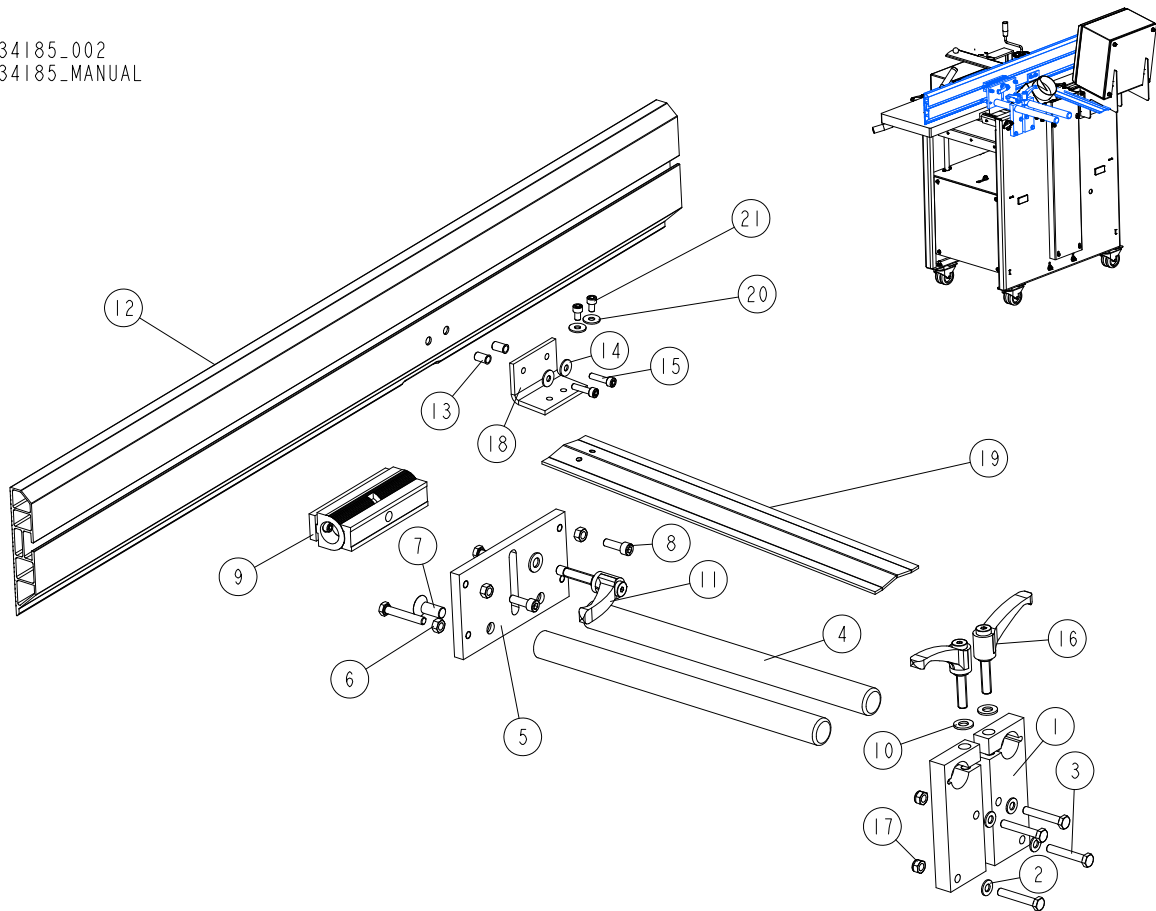
534357_001
534357_MANUAL



REF.	DESCRIPTION (* indicates parts available in assemblies only)	PART #	QTY
-	MOUNTING BAR ASSEMBLY	534357	1
1	BAR	534356-1	1
2	WASHER, 8.4 FLAT ZINC	F81054-1	4
3	SCREW, M8X25 8.8 HEX SOCKET HEAD CAP ZINC	F81002-21	2
4	PIN, ADJUSTMENT	534358	2
5	SCREW, M10X12-45H ZINC-PLATED SET	F81003-46	2
6	SCREW, M5X5-45H-DIN 916 HEX SOCKET SET WITH CUP POINT	F81000-92	2

2.24 Fence assembly 534185

534185_002
534185_MANUAL

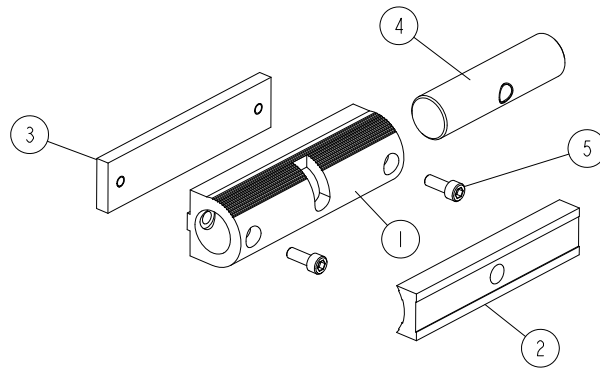


REF.	DESCRIPTION (* indicates parts available in assemblies only)	PART #	QTY
-	FENCE ASSEMBLY	534185	1
1	BRACKET, FENCE GUIDE MOUNTING	534184-1	2
2	WASHER, 8.4 FLAT ZINC	F81054-1	4
3	BOLT, M8X50 -8.8 HEX HEAD FULL THREAD ZINC	F81002-19	6
4	ROD	534187	2
5	PLATE, FENCE GUIDE	534186-1	1
6	NUT, M8-8-B HEX ZINC	F81032-1	4
7	SCREW, M12X30-10.9 FLAT SOCKET HEAD CAP	F81004-18	2
8	SCREW, M8X25 8.8 HEX SOCKET HEAD CAP ZINC	F81002-21	2
9	FENCE ADJUSTMENT ASSEMBLY See Section 2.25	534213	1
10	WASHER, 10.5 FLAT ZINC	F81055-1	3
11	HANDLE, ERZ.78 P-M10X50 ADJUSTABLE	534214	1
-	FENCE, GUIDE	534219	1
12	FENCE, GUIDE	534215	1
13	NUT, O-NIT-6-17-ZN RIVET	F81031-13	2
14	WASHER, 6.5 ZINC SPECIAL FLAT	F81053-11	2
15	SCREW, M6X25 -8.8-FE/ZN5 HEX SOCKET HEAD	F81001-41	2
16	HANDLE, ERZ.78 P-M10X40 ADJUSTABLE	533536	2
17	NUT, M8-8-B HEX NYLON ZINC LOCK	F81032-2	4

REF.	DESCRIPTION (* indicates parts available in assemblies only)	PART #	QTY	
18	BRACKET, RUBBER CONNECTING	534788	1	
19	PLATE, CUTTER COVER	534787-1	1	
20	WASHER, 6.5 ZINC SPECIAL FLAT	F81053-11	2	
21	SCREW, M6X10 8.8 HEX SOCKET HEAD CAP ZINC	F81001-12	2	

2.25 Adjuster Assembly, Fence Panel (No. 534213)

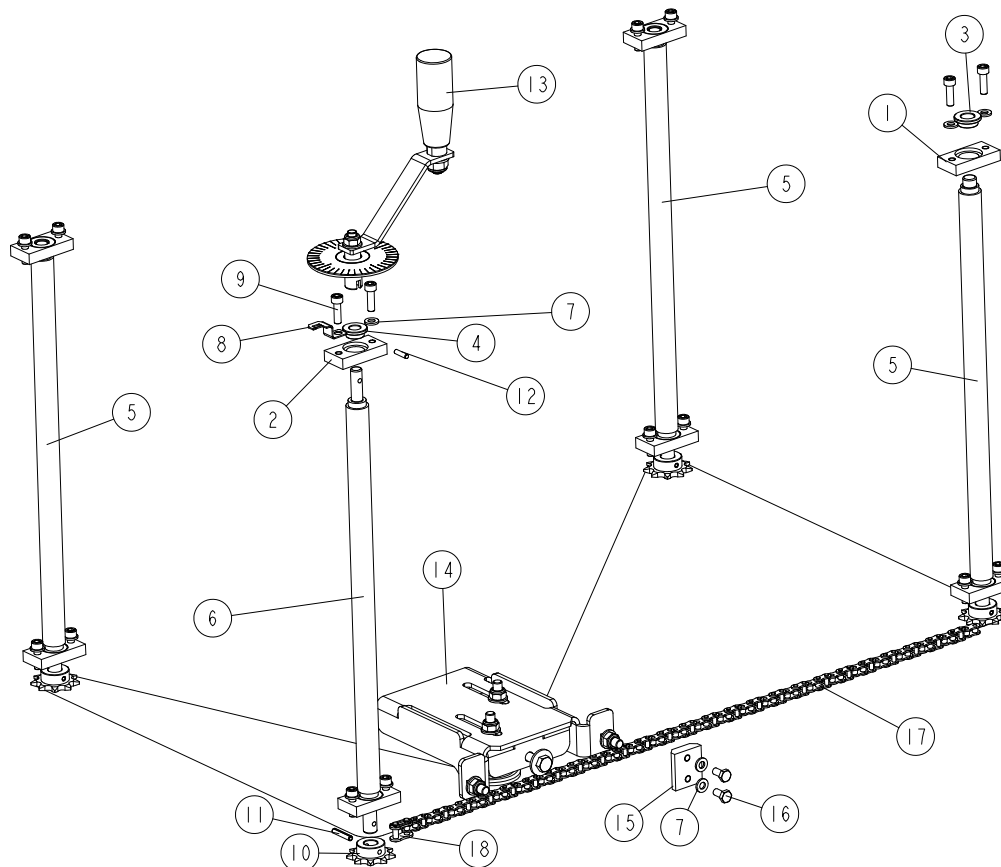
534213_001
534213_MANUAL



REF.	DESCRIPTION (* indicates parts available in assemblies only)	PART #	QTY
-	ADJUSTER ASSEMBLY, FENCE PANEL	534213	1
1	BLOCK, PANEL ADJUSTMENT (2)	534189	1
2	BLOCK, ANGLE ADJUSTMENT (1)	534188	1
3	PLATE, K3 PANEL ADJUSTMENT	534210-1	1
4	SHAFT, PANEL ADJUSTER	534211	1
5	SCREW, M6X16 8.8 HEX SOCKET HEAD CAP ZINC	F81001-21	2

2.26 Up/Down Assembly 537700

537700_001_A
537700_MANUAL

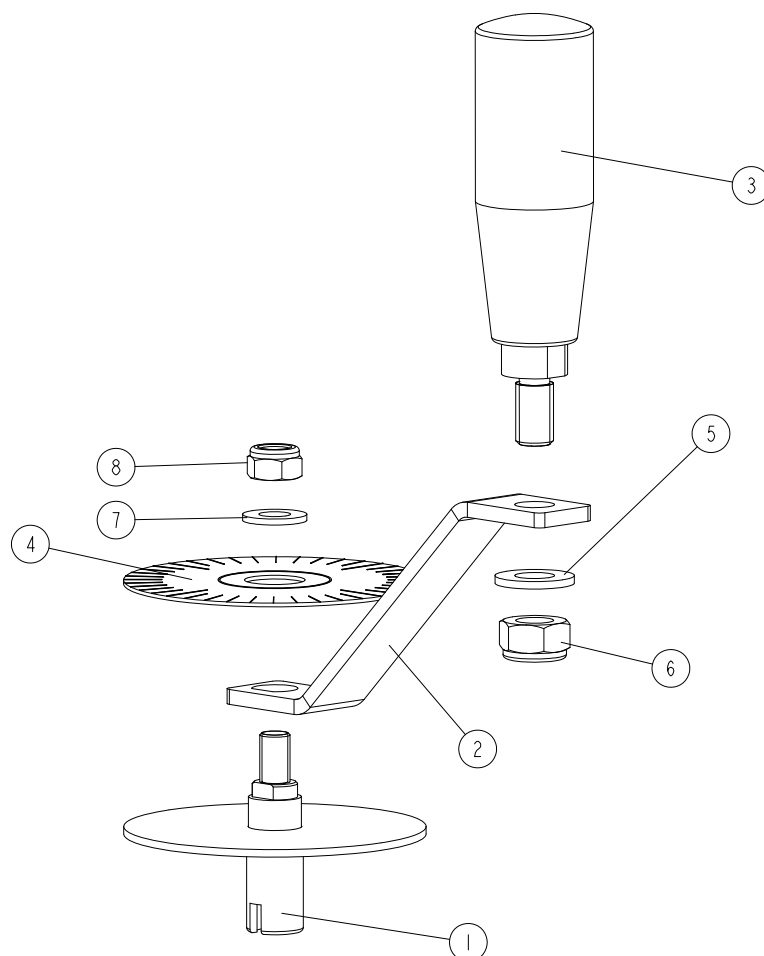


Ref	DESCRIPTION (* indicates parts available in assemblies only)	PART #	QTY
-	MP180 UP/DOWN ASSEMBLY	537700	1
1	BLOCK	533113-1	7
2	BLOCK 2	546903-1	1
3	BUSHING, 12/18-8 FLANGED 24-3	546901	7
4	BUSHING, 10/16-8 FLANGED 22-3	546902	1
5	SCREW, TR20X4 L=424 ACME	534386	3
6	SCREW, TR20X4 L=445 ACME	534387	1
7	WASHER 6,4 ZC DIN 126 ISO 7091	F81053-1	17
8	INDICATOR, SCALE	534395	1
9	SCREW M6X20 SHCS ZC 8.8 DIN 912 ISO 4762	F81001-22	16
10	SPROCKET, Z=9; 1/2"X 3/16"(CHAIN 083-1)	533111	4
11	PIN SPRING 4X24 ZC DIN 1481 ISO 8752	F81044-13	4
12	HARDENED PIN DIAM 4H6 X16-ST.	F81048-85	1
13	HANDLE WITH SHIELD See Section 2.27	534760	1
14	CHAIN TENSION ASSEMBLY See Section 2.28	533570	1
15	BLOCK, CHAIN SLIDE	533681	1

Ref	DESCRIPTION (* indicates parts available in assemblies only)	PART #	QTY	
16	BOLT M6X12 HH ZC FT 8.8 DIN 933	F81001-7	2	
17	CHAIN 083-1; P=1/2"; LENGTH=2.8702 M (225 LINKS+1 OFFSET LINK)	537701	1	
18	CONNECTING LINK FOR CHAIN 083-1	533128	1	

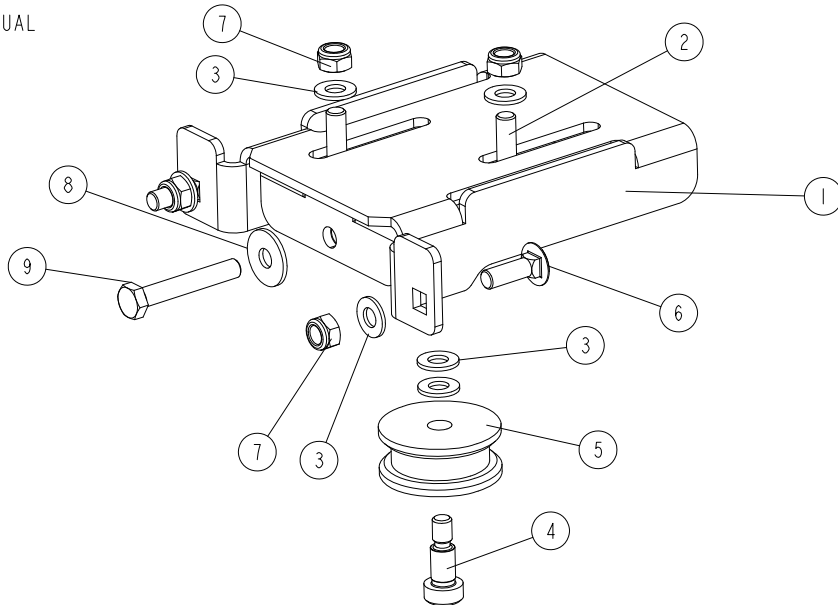
2.27 Knob and scale assembly 534760

534760_001_A
534760_MANUAL



Ref	DESCRIPTION (* indicates parts available in assemblies only)	PART #	QTY
-	HANDLE WITH SHIELD	534760	1
1	KNOB ASSEMBLY	534758-1	1
2	HANDLE PLATE	541457-1	1
3	REVOLVING GRIP	535974	1
4	DECAL, MP200 ROUND SCALE	533577	1
5	WASHER 10,5 ZC DIN 126 ISO 7091	F81055-1	1
6	NUT M10 ZC 8 NYLOCK DIN 982 ISO 7040	F81033-1	1
7	WASHER 8,4 ZC DIN 126 ISO 7091	F81054-1	1
8	NUT M8 ZC 8 NYLOCK DIN 982 ISO 7040	F81032-2	1

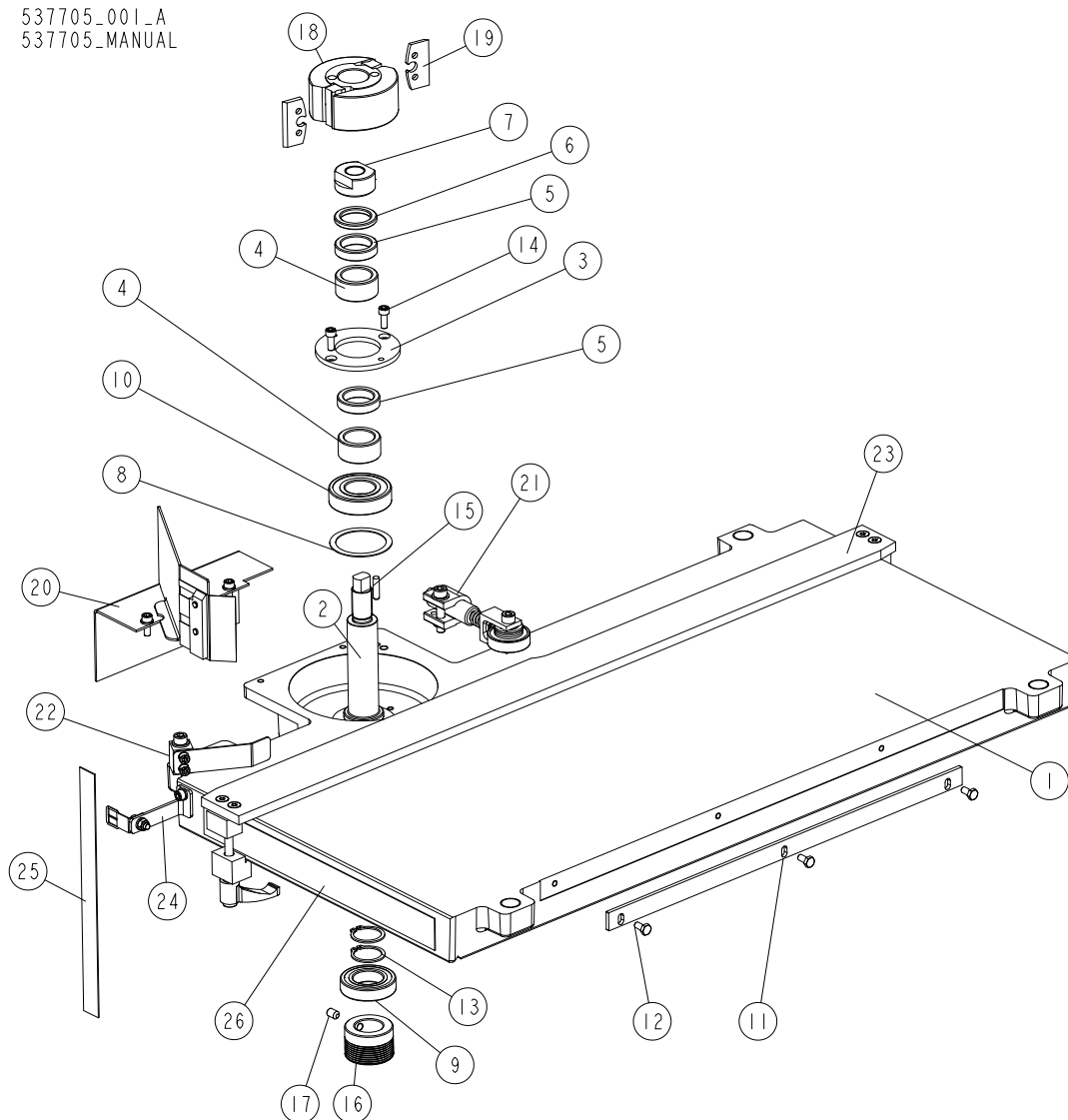
2.28 Chain Tension assembly 533570

533570_001
533570_MANUAL

Ref	DESCRIPTION (* indicates parts available in assemblies only)	PART #	QTY
-	CHAIN TENSION ASSEMBLY	533570	1
1	PLATE, CHAIN TENSIONER	533575-1	1
2	TENSIONER SLIDER	533572-1	1
3	WASHER 8,4 ZC DIN 126 ISO 7091	F81054-1	6
4	SHOULDER SCREW HSH -10-M8-16; 12,9	F81003-139	1
5	ROLLER, TENSIONER	533576	1
6	BOLT M8X25 CARRIAGE ZC 8.8 DIN603 ISO 8677	F81002-59	2
7	NUT M8 ZC 8 NYLOCK DIN 982 ISO 7040	F81032-2	4
8	WASHER 8,5 ZC FENDER DIN 9021 ISO 7093	F81054-11	1
9	BOLT M8X50 HH ZC FT 8.8 DIN 933	F81002-19	1

2.29 Bottom Table. 537705

537705_001_A
537705_MANUAL

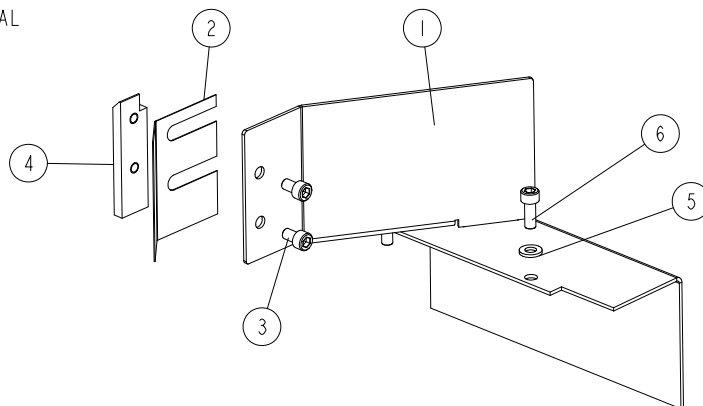


Ref	DESCRIPTION (* indicates parts available in assemblies only)	PART #	QTY
-	MP180 COMPLETE BOTTOM TABLE	537705	1
1	MP180 TABLE	546833-1	1
2	SHAFT	533537	1
3	PLATE, CLAMPING	533542-1	1
4	BUSHING, 30/42-20.2 ZINC-PLATED	533541-1	2
5	BUSHING, 30/42-10 ZINC-PLATED	533539-1	2
6	BUSHING, 30/42-5.2 ZINC-PLATED	533540-1	1
7	NUT, M20X1.5 LEFT	533538-1	1
8	WASHER 50X61.6X1	533543	1
9	BEARING, 6006 2RSR	096191	1
10	BEARING, 6206 2RSR P6 ROLLING (FAG, NSK, SKF)	100787	1
11	BAR	533546-1	1
12	BOLT M6X12 HH ZC FT 8.8 DIN 933	F81001-7	3

Ref	DESCRIPTION (* indicates parts available in assemblies only)	PART #	QTY
13	OUTSIDE RETAINING RING Z30 PN-M/85111 DIN 471	F81090-23	2
14	SCREW M6X16 SHCS ZC 8.8 DIN 912 ISO 4762	F81001-21	2
15	DOWEL PIN 6M6X12 DIN 7 ISO 2338	F81045-5	1
16	PULLEY, MULTI-GROOVE SMALL ALUMINIUM	533586	1
17	SCREW M8X12 HSS W/CONE POINT ZC 45H DIN 914	F81002-105	1
-	CUTTERHEAD	TG562K	1
18	CUTTERHEAD	533587	1
19	KNIFE, CUTTER	533588	2
20	MP180 CHIP BREAKER ASSEMBLY See Section 2.30	543554	1
21	CLAMP ROLLER ASSEMBLY II See Section 2.30	533550	1
22	FENCE PLATE ASSEMBLY See Section 2.32	537715	1
23	FENCE COMPLETE See Section 2.33	537674	1
24	SCALE INDICATOR ASSEMBLY See Section 2.34	537738	1
25	DECAL, VERTICAL SCALE	533579	1
26	DECAL, HORIZONTAL SCALE	537706	2
	KIT, ADJUSTMENT SHIMS	561712-S	1
	SHIM, 30/42-2 FE/ZN5 DIN 988	F81069-1	2
	SHIM, 30/42-1 FE/ZN5 DIN 988	F81069-2	2
	SHIM, 30/42-0.5 FE/ZN5 DIN 988	F81069-3	2
	SHIM, 30/42-0.3 FE/ZN5 DIN 988	F81069-4	2
	SHIM, 30/42-0.2 FE/ZN5 DIN 988	F81069-5	2
	SHIM, 30/42-0.1 FE/ZN5 DIN 988	F81069-6	2

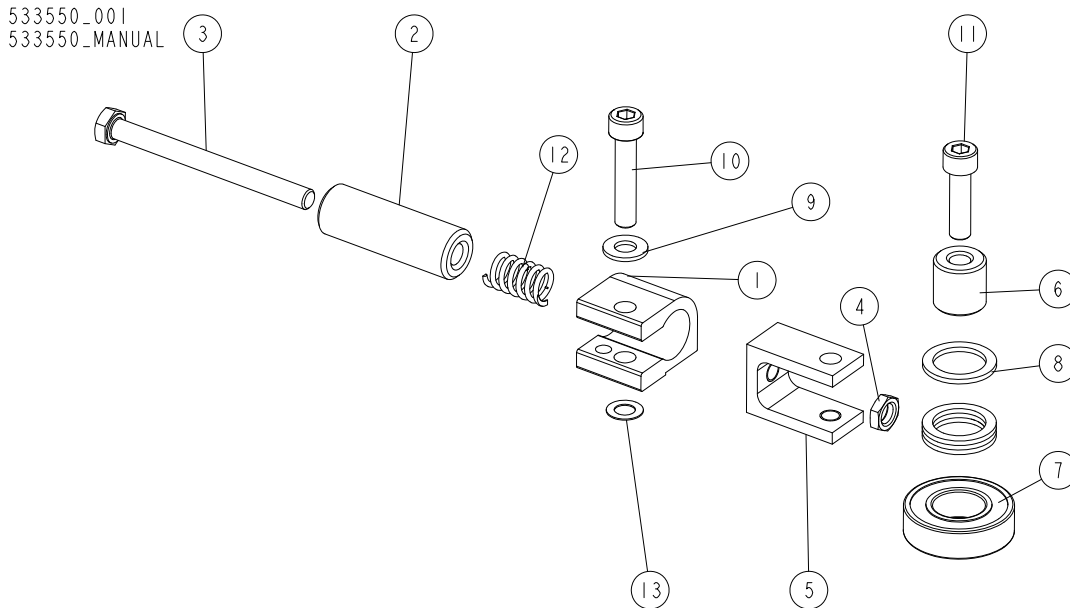
2.30 Chip Breaker. 543554

543554_001
543554_MANUAL



Ref	DESCRIPTION (* indicates parts available in assemblies only)	PART #	QTY
-	MP180 CHIP BREAKER ASSEMBLY	543554	1
1	GUARD, CUTTER	533501-1	1
2	PLATE, 0.5 MM CHIP BREAKER	533502	1
3	BOLT M6X10 SHCS ZC PT 8.8 DIN 912 ISO 4762	F81001-12	2
4	ASSEMBLY PLATE	543553-1	1
5	WASHER 6,4 ZC DIN 126 ISO 7091	F81053-1	2
6	SCREW M6X16 SHCS ZC 8.8 DIN 912 ISO 4762	F81001-21	2

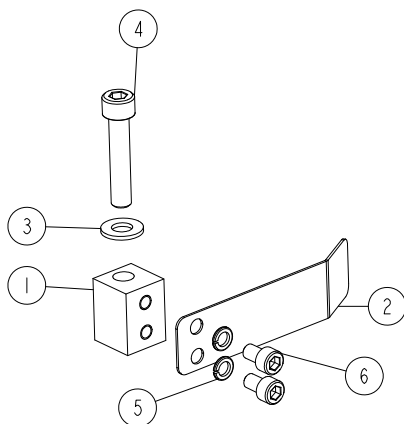
2.31 Clamp Roller Assembly (No. 533550)



REF.	DESCRIPTION (* indicates parts available in assemblies only)	PART #	QTY
-	CLAMP ROLLER ASSEMBLY II	533550	1
1	CONNECTOR, ALUMINIUM	533551-1	1
2	BUSHING, 8.5/20-60 ZINC-PLATED	533553-1	1
3	BOLT, M8X90-8.8 HEX HEAD FULL THREAD ZINC	F81002-16	1
4	NUT, M8-04-HEX THIN ZINC	F81032-8	1
5	CONNECTOR, ALUMINIUM	533552	1
6	BUSHING, 8.2/20-20	533554-1	1
7	BEARING, 6004 2RS CX ROLLING	093868	1
8	WASHER, 28/20-2	533555	4
9	WASHER, 8.4 FLAT ZINC	F81054-1	1
10	SCREW, M8X40-8.8 HEX SOCKET HEAD CAP ZINC	F81002-29	1
11	SCREW, M8X30-8.8 HEX SOCKET HEAD CAP ZINC	F81002-31	1
12	SPRING, 12X25XN2	533556	1
13	WASHER, 14/8-0.5 DIN 988 SPACER	F81055-16	1

2.32 Fence Plate. 537715

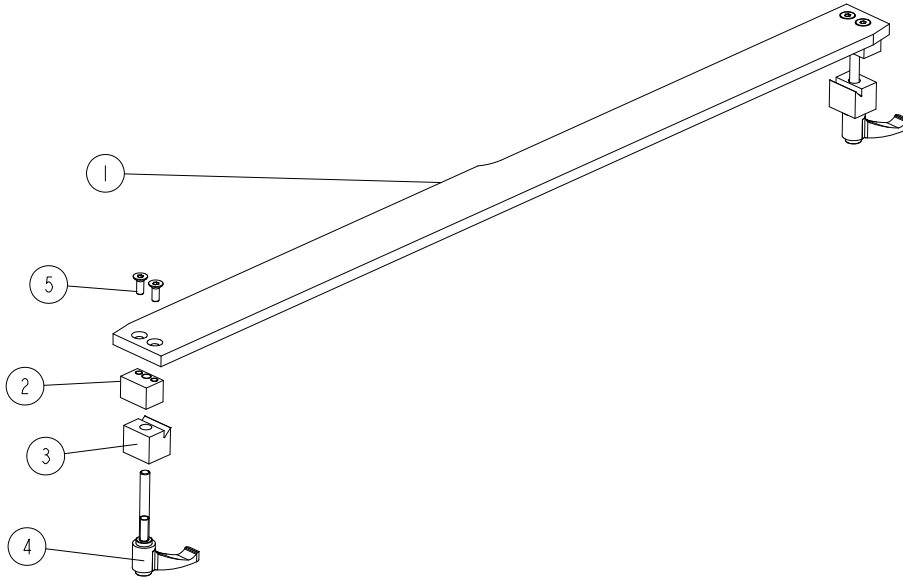
537715_001
537715_MANUAL



Ref	DESCRIPTION (* indicates parts available in assemblies only)	PART #	QTY
-	FENCE PLATE ASSEMBLY	537715	1
1	BLOCK	537716-1	1
2	FENCE PLATE	537717-1	1
3	WASHER 8,4 ZC DIN 126 ISO 7091	F81054-1	1
4	SCREW M8X40 SHCS ZC 8.8 DIN 912 ISO 4762	F81002-29	1
5	WASHER 6,1 ZC SPRING LOCK DIN 127	F81053-3	2
6	BOLT M6X10 SHCS ZC PT 8.8 DIN 912 ISO 4762	F81001-12	2

2.33 Fence. 537674

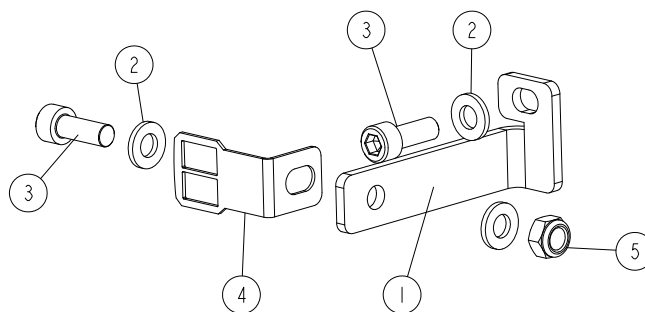
537674_001
537674_MANUAL



Ref	DESCRIPTION (* indicates parts available in assemblies only)	PART #	QTY	
-	FENCE COMPLETE	537674	1	
1	FENCE	537673-1	1	
2	CUBE II	537672-1	2	
3	CUBE I	537671-1	2	
4	ADJUSTABLE HANDLE ERZ.63 P-M8X63	537675	2	
5	SCREW M6X16 HSFHS ZC 10.9 DIN 7991	F81001-55	4	

2.34 Scale Indicator Assembly. 537738

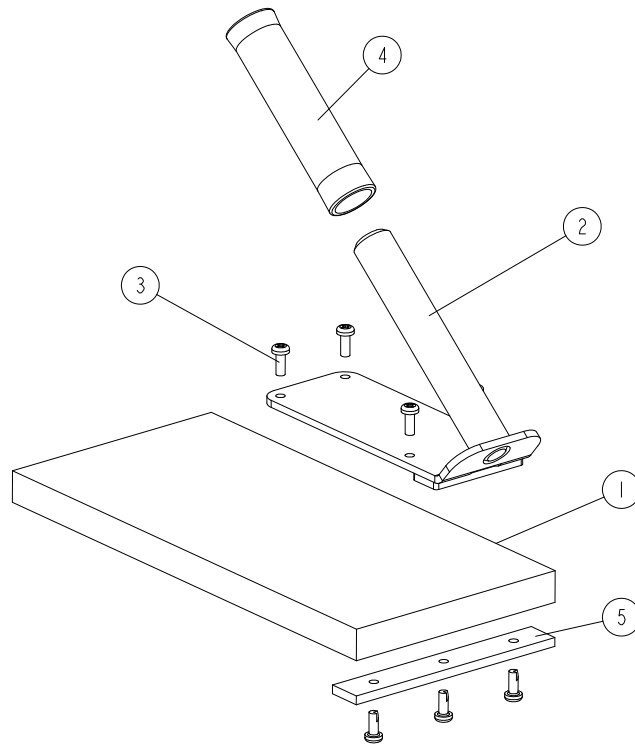
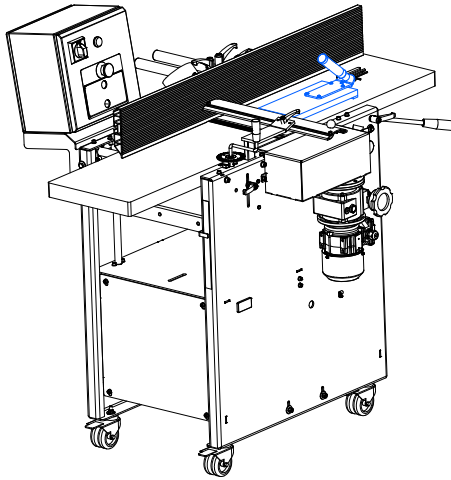
537738_001
537738_MANUAL



Ref	DESCRIPTION (* indicates parts available in assemblies only)	PART #	QTY
-	SCALE INDICATOR ASSEMBLY	537738	1
1	INDICATOR HANDLE	537737-1	1
2	WASHER 6,4 ZC DIN 126 ISO 7091	F81053-1	3
3	SCREW M6X16 SHCS ZC 8.8 DIN 912 ISO 4762	F81001-21	2
4	SCALE INDICATOR	533099	1
5	NUT M6 ZC 8 NYLOCK DIN 982 ISO 7040	F81031-2	1

2.35 Pusher 534166

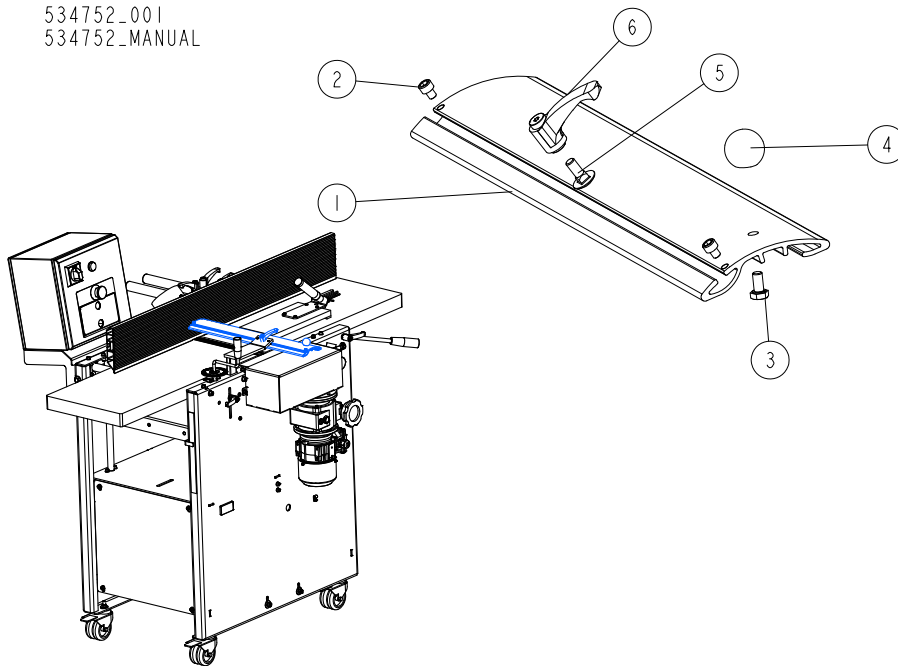
534166_001
534166_MANUAL



REF.	DESCRIPTION (* indicates parts available in assemblies only)	PART #	QTY	
-	PUSHER	534166	1	
1	PLATE, MANUAL CLAMP	534160	1	
2	MANUAL CLAMP ASSEMBLY	534165-1	1	
3	BOLT, #10-24X1/2 PH	F05015-17	7	
4	GRIP	086164	1	
5	PLATE, CLAMPING	534786-1	1	

2.36 Cutter protective cover assembly 534752

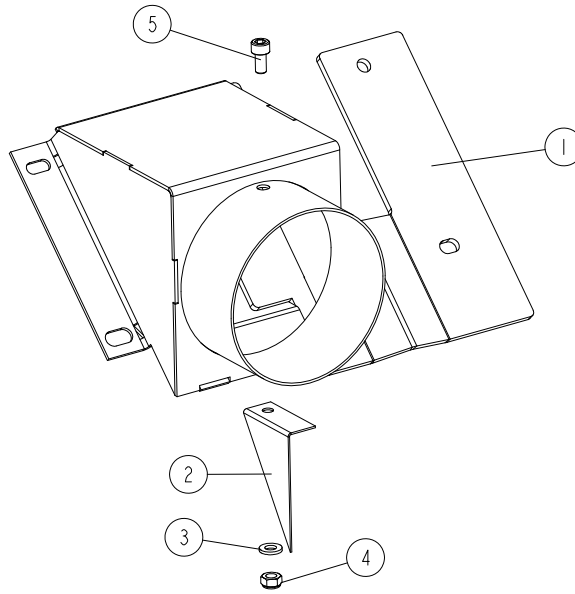
534752_001
534752_MANUAL



REF.	DESCRIPTION (* indicates parts available in assemblies only)	PART #	QTY
-	CUTTER PROTECTIVE COVER ASSEMBLY	534752	1
1	CUTTER PROTECTIVE COVER	534230	1
2	SCREW, M5X6 8.8 HEX SOCKET HEAD CAP ZINC	F81000-94	2
3	BOLT, M6X12 8.8 HEX HEAD FULL THREAD ZINC	F81001-7	1
4	KNOB, DIN 319-KU-25-M6-C ROUND	534769	1
5	BOLT, M6X16 -8.8 CARRIAGE ZINC	F81001-36	1
6	HANDLE, ERZ.44 A-M6 ADJUSTABLE	534751	1

2.37 Chip Duct 534180

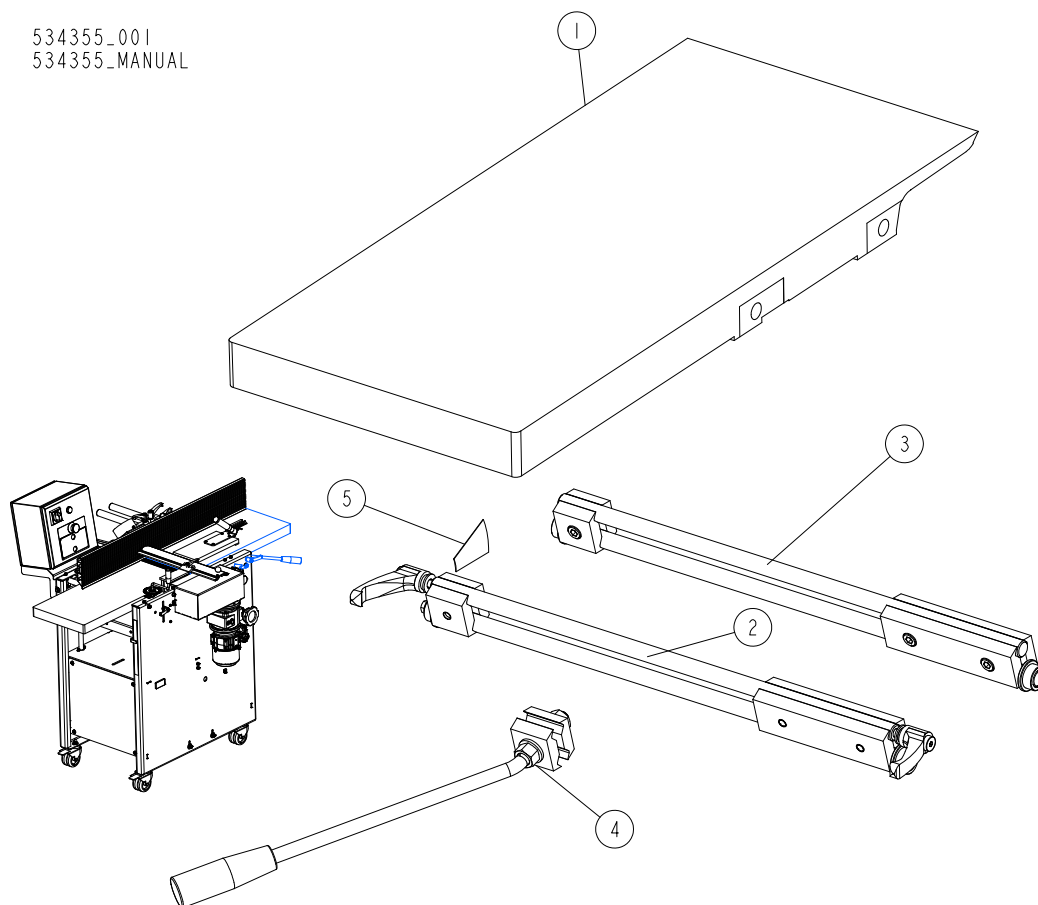
534180_001
534180_MANUAL



REF	DESCRIPTION (◆ indicates parts available in assemblies only)	PART #	QTY	
-	DUCT, CHIP	534180	1	
1	DUCT, CHIP	534175-1	1	
2	PLATE, CHIP DUCT	534179	1	
3	WASHER, 6.4 FLAT ZINC	F81053-1	1	
4	NUT, M6-8-B HEX NYLON ZINC LOCK	F81031-2	1	
5	SCREW M6X12 SHCS ZC 8.8 DIN 912 ISO 4762	F81001-87	1	

2.38 Upper infeed table 534355

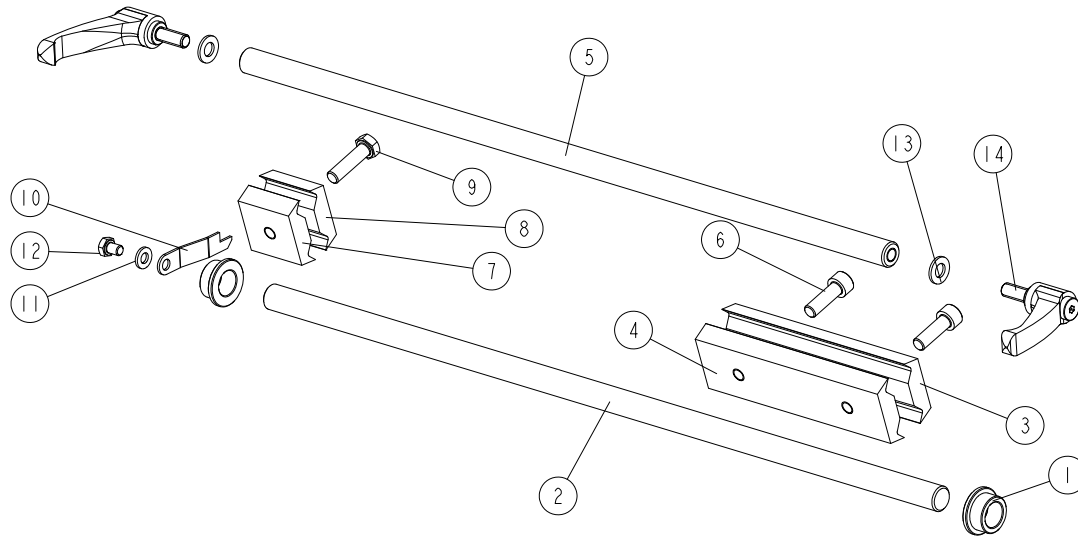
534355_001
534355_MANUAL



REF.	DESCRIPTION (* indicates parts available in assemblies only)	PART #	QTY
-	TABLE, UPPER INFEED - COMPLETE	534355	1
1	TABLE, MP160 INFEED	534353-1	1
2	FRONT GUIDE RAIL ASSEMBLY, COMPLETE See Section 2.39	534375	1
3	REAR GUIDE RAIL ASSEMBLY, COMPLETE See Section 2.40	534376	1
4	HANDLE, INFEED TABLE ADJUSTMENT See Section 2.41	534380	1
5	DECAL	534203	1

2.39 Front guide rail assembly 534375

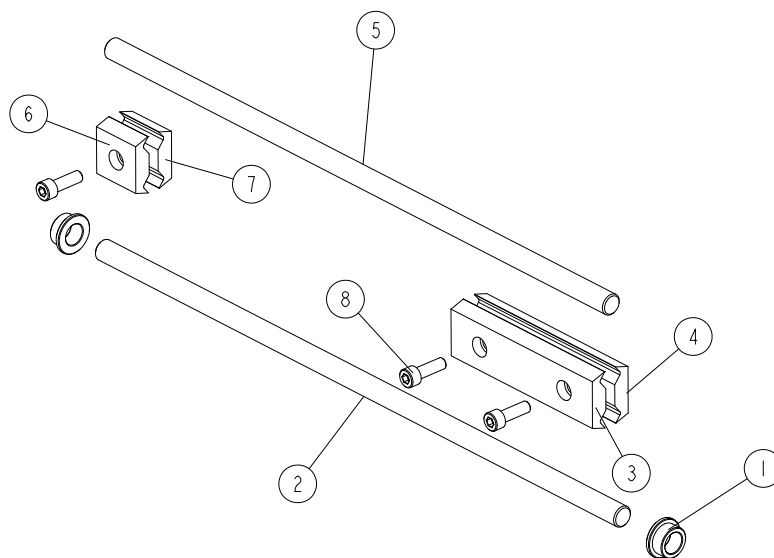
534375_001_A
534375_MANUAL



REF	DESCRIPTION (◆ indicates parts available in assemblies only)	PART #	QTY
-	FRONT GUIDE RAIL ASSEMBLY, COMPLETE	534375	1
1	BUSHING 15/22-12 FLANGED 28-3	534359	2
2	SHAFT, N15X512	534371	1
3	BRACKET, GUIDE RAIL RIGHT	534363-1	1
4	BRACKET, GUIDE RAIL RIGHT	534364-1	1
5	SHAFT, N15X492	534372	1
6	SCREW, M8X25 8.8 HEX SOCKET HEAD CAP ZINC	F81002-21	2
7	BRACKET, GUIDE RAIL	534362-1	1
8	BRACKET, GUIDE RAIL	534365-1	1
9	BOLT M8X30 HH ZC FT 8.8 DIN 933	F81002-7	1
10	INDICATOR, SCALE	534377-1	1
11	WASHER, M6, FLAT,ZINC	F81053-1	1
12	BOLT, M6X8-8.8 HEX HEAD FULL THREAD ZINC	F81001-33	1
13	WASHER, 8.4/16-1.6 PA66	546948	2
14	HAND LEVER, ERZ. 63P-M8X20 ADJUSTABLE	534378	2

2.40 Rear guide rail assembly 534376

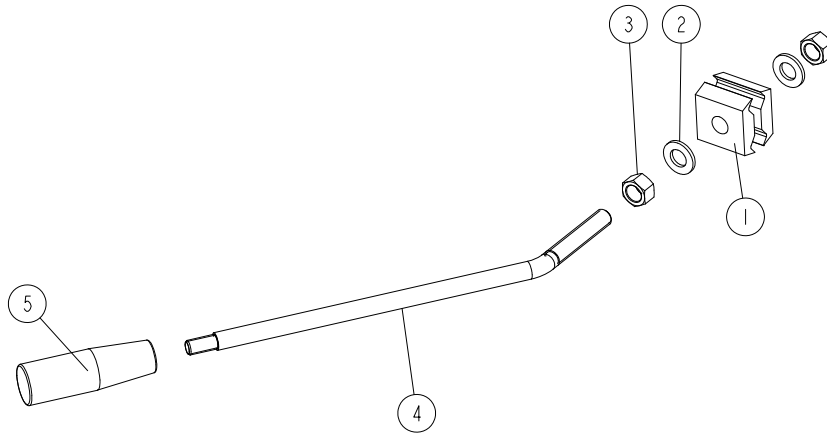
534376_001
534376_MANUAL



REF.	DESCRIPTION (* indicates parts available in assemblies only)	PART #	QTY
-	REAR GUIDE RAIL ASSEMBLY, COMPLETE	534376	1
1	BUSHING, 15/22-12 FLANGED 28-3	534359	2
2	SHAFT, LLN15X512	534374	1
3	BRACKET, GUIDE RAIL RIGHT	534363-1	1
4	BRACKET, GUIDE RAIL RIGHT	534364-1	1
5	SHAFT, LLN15X492	534373	1
6	BRACKET, GUIDE RAIL	534361-1	1
7	BRACKET, GUIDE RAIL	534362-1	1
8	SCREW, M8X25 8.8 HEX SOCKET HEAD CAP ZINC	F81002-21	3

2.41 Infeed table adjustment handle 534380

534380_001
534380_MANUAL

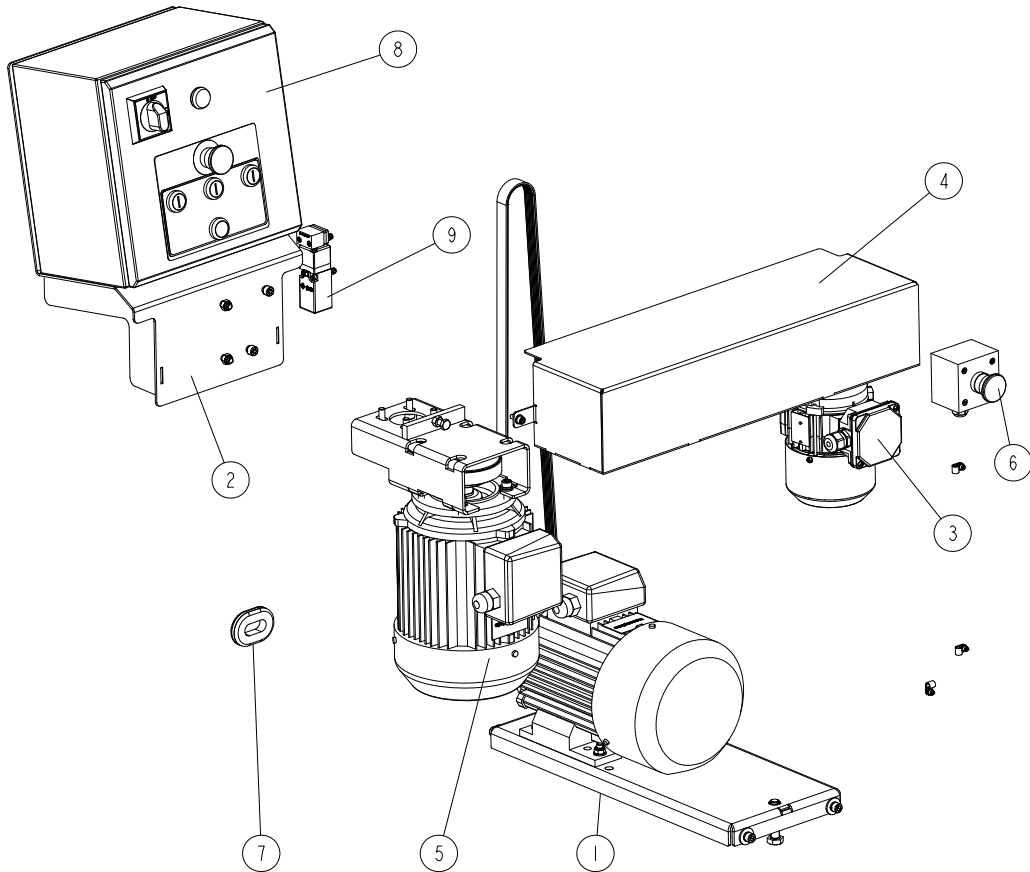


REF.	DESCRIPTION (* indicates parts available in assemblies only)	PART #	QTY	
-	INFEE TABLE ADJUSTMENT HANDLE, COMPLETE	534380	1	
1	BRACKET, HANDLE	534366-1	2	
2	WASHER, 13 FLAT ZINC	F81056-1	2	
3	NUT, M12-8 HEX ZINC	F81034-1	2	
4	ROD, M12	534379-1	1	
5	GRIP, K1202.11028 C TAPERED	534381	1	

SECTION 3 MOTOR KITS, 537694, 537695

3.1 MP180 Motor Kits PRO 537694, ECO 537695

537695_001
537695_MANUAL



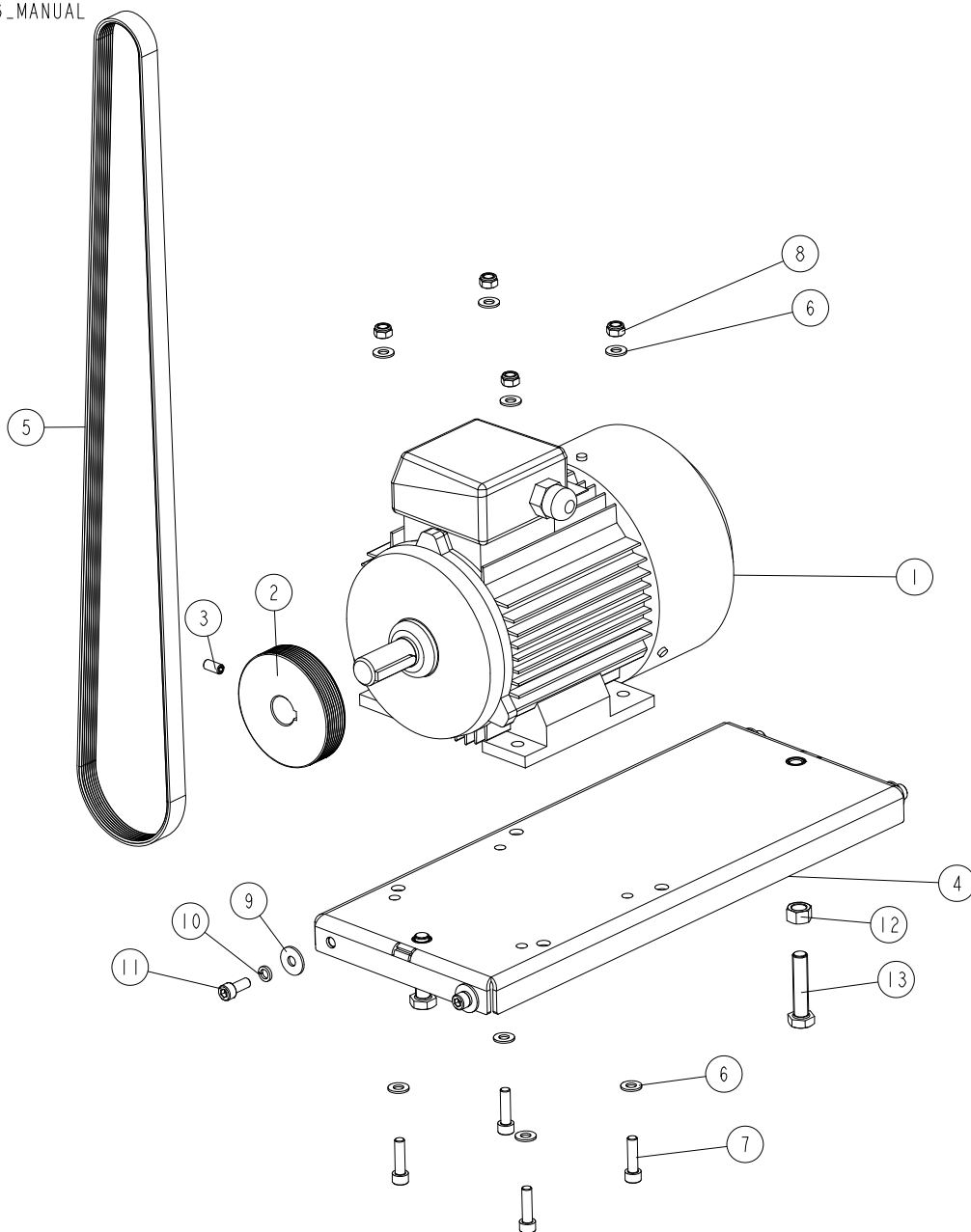
REF.	DESCRIPTION (* indicates parts available in assemblies only)	PART #	QTY
-	ECO MOTOR KIT FOR MP180	537695	1
-	PRO MOTOR KIT FOR MP180	537694	1
-	PRO MOTOR KIT FOR MP180A 1X230V UL	537694-6U ¹	1
-	PRO MOTOR KIT FOR MP180B 3x230V UL	537694-2U ²	1
1	CUTTING HEAD DRIVE See Section 3.2	534196	1
	CUTTING HEAD DRIVE AU	534196-6U ³	1
	HORIZONTAL CUTTER DRIVE See Section 3.3	537728 ⁴	1
	HORIZONTAL CUTTER DRIVE PRO UL	537728-UL ⁵	1
2	ELECTRICAL BOX MOUNT COMPLETE See Section 3.4	537704	1
3	ECO MOTION DRIVE F/B MP180 See Section 3.5	533638-180	1
	PRO MOTION DRIVE F/B MP180 See Section 3.13	533650-180 ⁶	1
	PRO MOTION DRIVE F/B MP180 AU	533650-180A U ⁷	1
	PRO MOTION DRIVE F/B MP180 UL	533650-180U ⁸	1
4	MP180 ECO COVER See Section 3.6	537696	1
	MP180 UL COVER ⁹ See Section 3.7	570008	1

REF.	DESCRIPTION (* indicates parts available in assemblies only)	PART #	QTY	
5	SIDE CUTTER DRIVE See Section 3.10	533647	1	
	SIDE CUTTER DRIVE 230V UL	533647-6U ¹⁰	1	
	SIDE CUTTER DRIVE UL	533647-U ¹¹	1	
6	EMERGENCY STOP ASSEMBLY, MP160 See Section 3.11	535669	1	
7	GROMMET, RUBBER, 1 X 1 3/4 OVAL	085613	1	
8	BOX, ELECTRIC - COMPLETE MP180EH 3X400V CE See Section 3.9	537670	1	
	BOX, ELECTRIC - COMPLETE MP180 AU	537670-6U ¹²	1	
	BOX, ELECTRIC - COMPLETE MP180 BU	537670-2U ¹³	1	
9	SAFETY SWITCH ASSEMBLY See Section 3.12	537708	1	

¹ American version only (MP180EA6U-V)
² American version only (MP180EB7U-V)
³ Included in 537694-6U
⁴ Included in 537694
⁵ Included in 537694-2U
⁶ Included in 537694
⁷ Included in 537694-6U
⁸ Included in 537694-2U
⁹ Included in 537694-6U, 537694-2U
¹⁰ Included in 537694-6U
¹¹ Included in 537694-2U
¹² Included in 537694-6U
¹³ Included in 537694-2U

3.2 Cutting Head Drive 534196

534196_001_B
534196_MANUAL



REF.	DESCRIPTION (* indicates parts available in assemblies only)	PART #	QTY
-	CUTTING HEAD DRIVE	534196	1
-	CUTTING HEAD DRIVE AU	534196-6U ¹	1
1	MOTOR 3SIE90L2A, 3KW, 2900 R.P.M, 50HZ	537386 ²	1
	MOTOR, SELHR90-2M2 IMB34/2 2,7KW 230V UL	533651-UL ³	1
2	PULLEY, MULTI-GROOVE ALUMINIUM	533585	1
3	SCREW M8X16 HSS W/FLAT POINT ZC 45H DIN	F81002-124	1
4	MOTOR PLATE WELDED / PAINT	534200-1	1
5	BELT, 8 PJ 1549 MULTI-RIBBED	534201	1
6	WASHER 8,4 ZC DIN 126 ISO 7091	F81054-1	8

REF.	DESCRIPTION (* indicates parts available in assemblies only)	PART #	QTY	
7	SCREW M8X30 SHCS ZC 8.8 DIN 912 ISO 4762	F81002-31	4	
8	NUT M8 ZC 8 NYLOCK DIN 982 ISO 7040	F81032-2	4	
9	WASHER 8,5 ZC FENDER DIN 9021 ISO 7093	F81054-11	4	
10	WASHER 8,2 ZC SPRING LOCK DIN 127	F81054-4	4	
11	SCREW M8X20 SHCS ZC 8.8 DIN 912 ISO 4762	F81002-30	4	
12	NUT M12 ZC 8 DIN 934	F81034-1	2	
13	BOLT M12X55 HH ZC FT 8.8 DIN 933	F81004-43	2	

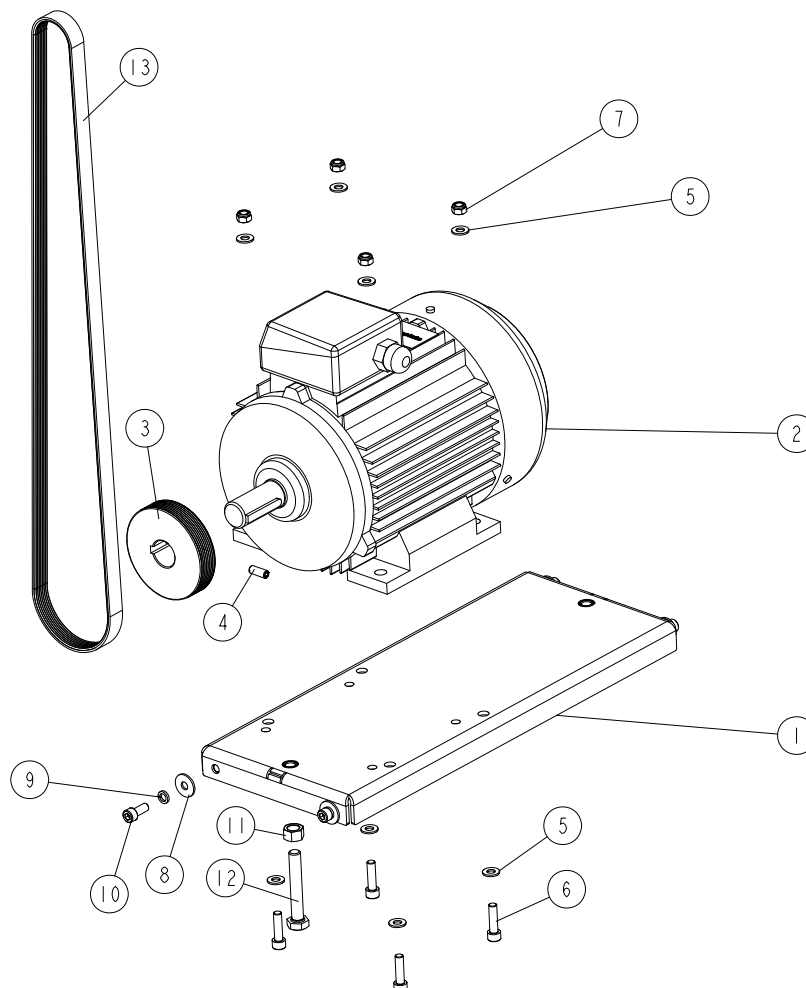
¹ American version only

² For other voltage version see motor's specification in the operation manual.

³ Included in 534196-6U

3.3 Horizontal Cutter Drive 537728

537728_001_A
537728_MANUAL



REF.	DESCRIPTION (* indicates parts available in assemblies only)	PART #	QTY
-	HORIZONTAL CUTTER DRIVE	537728	1
-	HORIZONTAL CUTTER DRIVE PRO UL	537728-UL ¹	1
1	MOTOR PLATE WELDED / PAINT	534200-1	1
2	MOTOR 3SIE100L2A, 4KW, 2900 R.P.M, 50HZ	537387 ²	1
	MOTOR, INDUKTA 3SIE100L2A 4KW IMB3 UL	537387-UL ³	1
3	PULLEY, MULTI-GROOVE ALUMINIUM MP200 PRO	533585-P	1
4	SCREW M8X20 HSS W/FLAT POINT ZC 45H DIN 913	F81002-103	1
5	WASHER 8,4 ZC DIN 126 ISO 7091	F81054-1	8
6	SCREW M8X30 SHCS ZC 8.8 DIN 912 ISO 4762	F81002-31	4
7	NUT M8 ZC 8 NYLOCK DIN 982 ISO 7040	F81032-2	4
8	WASHER 8,5 ZC FENDER DIN 9021 ISO 7093	F81054-11	4
9	WASHER 8,2 ZC SPRING LOCK DIN 127	F81054-4	4
10	SCREW M8X20 SHCS ZC 8.8 DIN 912 ISO 4762	F81002-30	4
11	NUT M12 ZC 8 DIN 934	F81034-1	2
12	BOLT M12X75 HH ZC FT 8.8 DIN 933	F81004-10	2

REF.	DESCRIPTION (* indicates parts available in assemblies only)	PART #	QTY	
13	BELT, 8 PJ 1473 MULTI-RIBBED	537729	1	

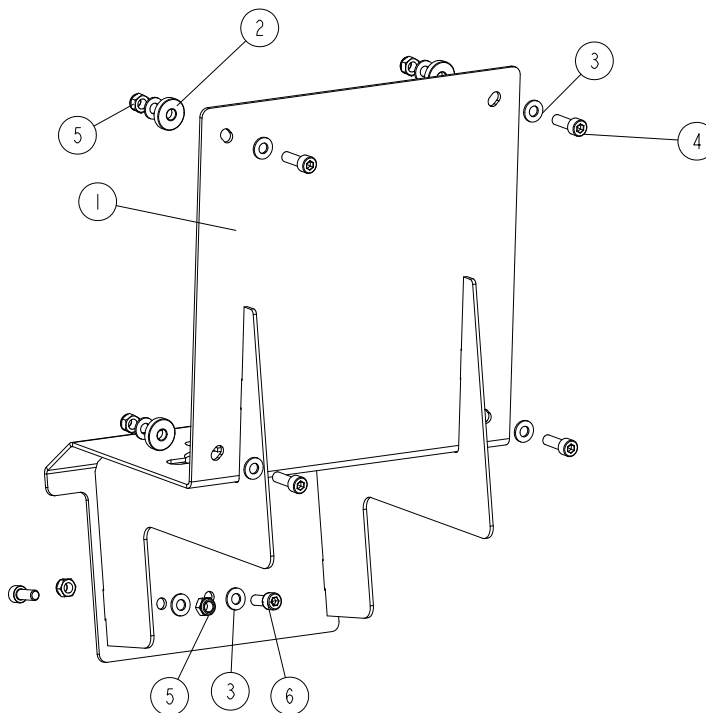
¹ American version only

² For other voltage version see motor's specification in the operation manual.

³ Included in 537728-UL

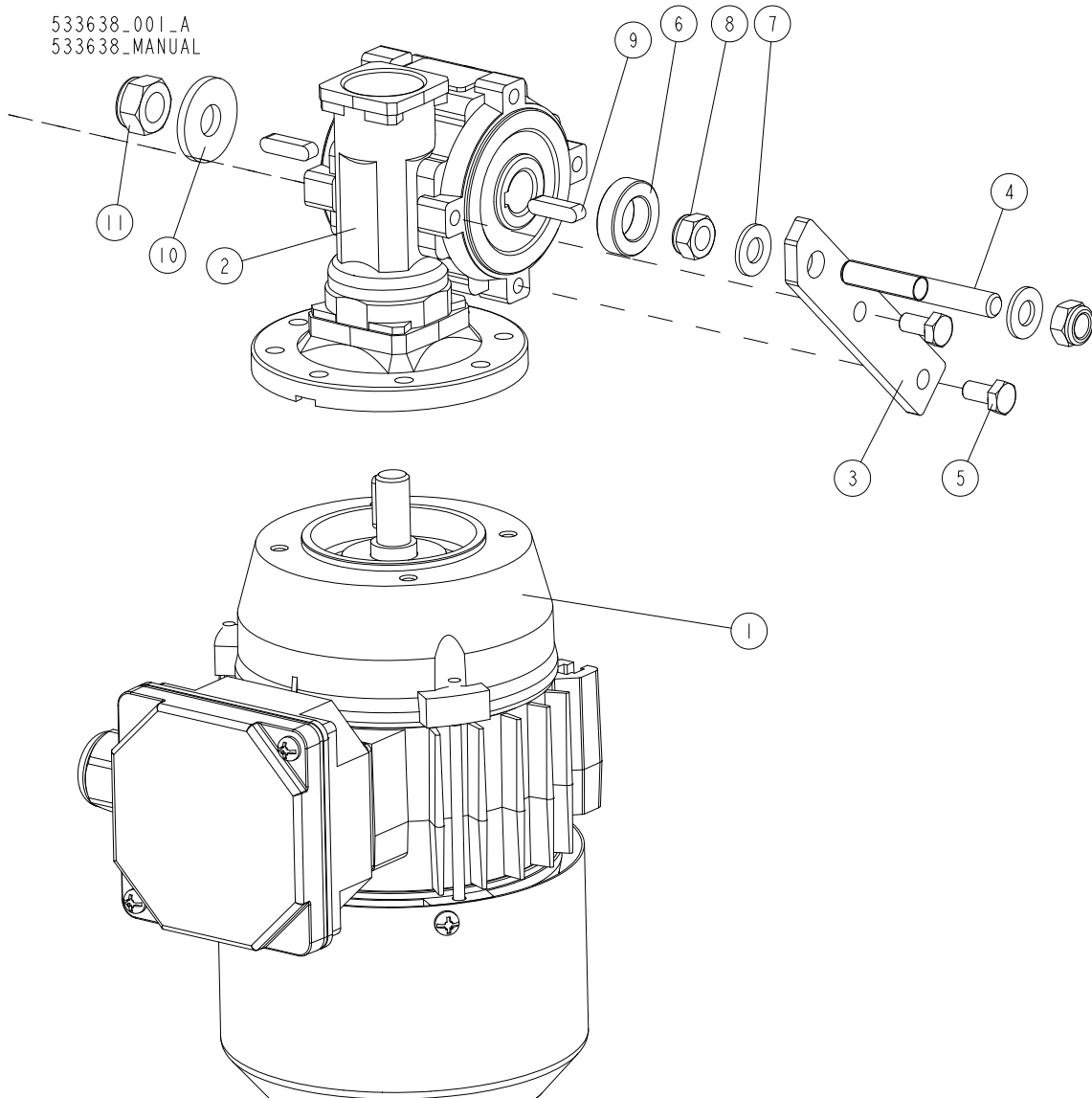
3.4 Electrical Box Mount 537704

537704_001
 537704_MANUAL



REF.	DESCRIPTION (* indicates parts available in assemblies only)	PART #	QTY
-	ELECTRICAL BOX MOUNT COMPLETE	537704	1
1	ELECTRICAL BOX MOUNT WELDMENT	537703-1	1
2	WASHER, 8.5/25-6 POLYAMIDE	523952	4
3	WASHER 8,4 ZC DIN 126 ISO 7091	F81054-1	12
4	SCREW M8X25 SHCS ZC 8.8 DIN 912 ISO 4762	F81002-21	4
5	NUT M8 ZC 8 NYLOCK DIN 982 ISO 7040	F81032-2	8
6	SCREW M8X20 SHCS ZC 8.8 DIN 912 ISO 4762	F81002-30	4

3.5 ECO Feed drive 533638

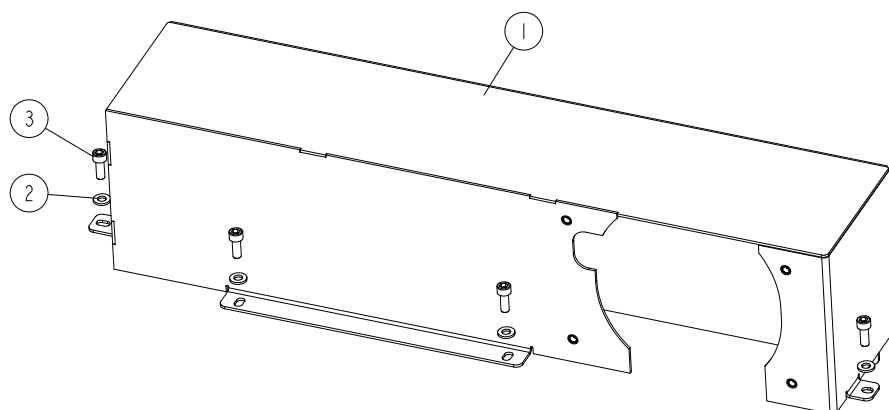


REF.	DESCRIPTION (* indicates parts available in assemblies only)	PART #	QTY
-	DRIVE, MP180 ECO FEED	533638-180	1
-	MOTOREDUCER, KC30/P30+SKH63-4B2/X	533639	1
1	MOTOR, SKH63-4B2 (0.18KW; 1370 R.P.M.)	532802 ¹	1
2	REDUCER, KC30/P30 90/11 V6	533637	1
3	ARM, TORQUE	533634-1	1
4	BOLT, M8	533635-1	1
5	BOLT M6X12 HH ZC FT 8.8 DIN 933	F81001-7	2
6	BUSHING, 14.3/25-7 ZINC-PLATED	533636-1	1
7	WASHER 8,4 ZC DIN 126 ISO 7091	F81054-1	2
8	NUT M8 ZC 8 NYLOCK DIN 982 ISO 7040	F81032-2	2
9	KEY, A5X5X20 PARALLEL	513320	2
10	WASHER 10,5 ZC FENDER DIN 9021 ISO 7093	F81055-6	1
11	NUT M10 ZC 8 NYLOCK DIN 982 ISO 7040	F81033-1	1

¹ For other voltage version see motor's specification in the operation manual.

3.6 ECO Cover 537696

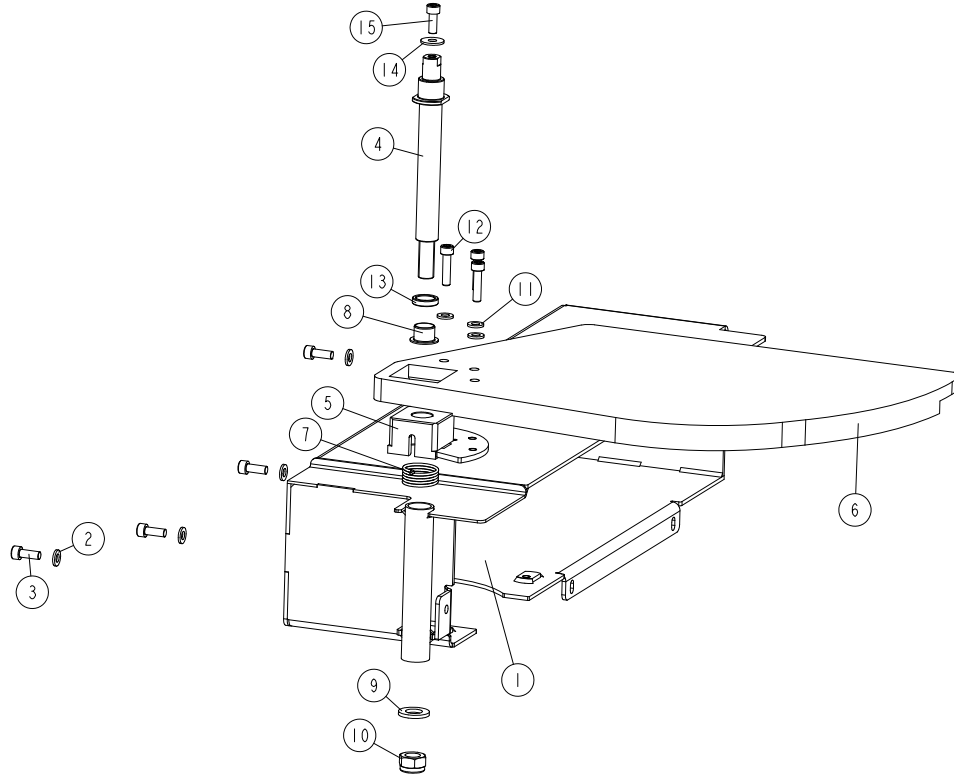
537696_001
 537696_MANUAL



REF.	DESCRIPTION (* indicates parts available in assemblies only)	PART #	QTY
-	MP180 ECO COVER	537696	1
1	GUARD WELDMENT	537697-1	1
2	WASHER 6,4 ZC DIN 126 ISO 7091	F81053-1	4
3	SCREW M6X16 SHCS ZC 8.8 DIN 912 ISO 4762	F81001-21	4

3.7 MP180 UL Cover 570008

570008_001
570008_MANUAL

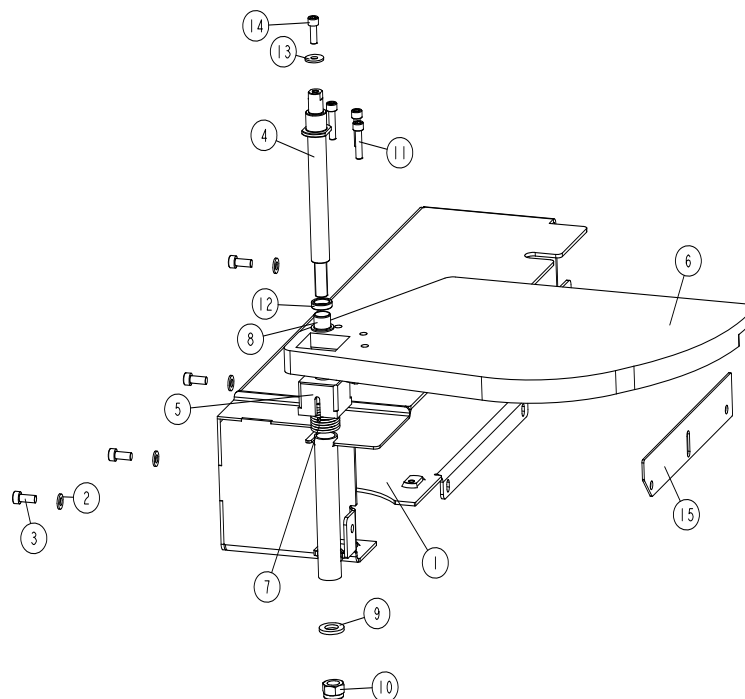


REF	DESCRIPTION (u indicates parts available in assemblies only)	PART #	QTY
-	MP180 UL COVER ¹	570008	1
-	UL COVER - COMPLETE	569020	1
1	COVER - WELDMENT	569015-1	1
2	WASHER 6.4 FE/ZN5 PN-78/M-82005	F81053-1	4
3	SCREW, M6X16 8.8 HEX SOCKET HEAD CAP ZIN	F81001-21	4
-	CUTTER COVER	569008	1
4	PIVOT	569007-1	1
5	BUSHING, MOUNTING	569011-1	1
6	COVER, MOVABLE	568419	1
7	SPRING, TENSION	569012	1
8	BUSHING, SLIDE IGUS: JFM_1416_12_1	569013	1
9	WASHER,13 FLAT ZINC	F81056-1	1
10	NUT, M12 8 HEX NYLON ZINC LOCK	F81034-2	1
11	WASHER 6.4 FE/ZN5 PN-78/M-82005	F81053-1	3
12	SCREW, M6X25-8.8 HEX SOCKET HEAD CAP ZIN	F81001-41	3
13	BUSHING, DISTANCE	570020-1	1
14	WASHER, 6.5 SPECIAL FLAT ZINC	F81053-11	1
15	SCREW, M6X16 8.8 HEX SOCKET HEAD CAP ZIN	F81001-21	1

¹ American version only

3.8 MP180 UL Cover Service Kit

570008-S_001
 570008-S_MANUAL

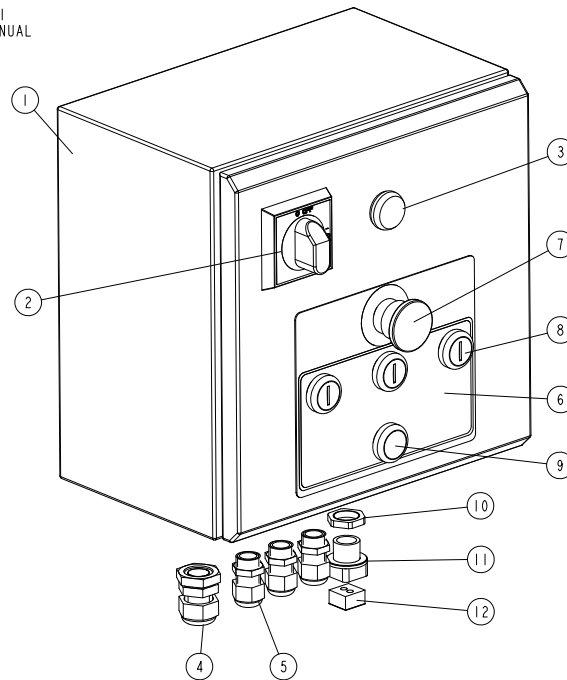


REF.	DESCRIPTION (◆ indicates parts available in assemblies only)	PART #	QTY
-	MP180 UL COVER - SERVICE KIT ¹	570008-S	1
-	UL COVER - COMPLETE	569020	1
1	COVER - WELDMENT	569015-1	1
2	WASHER, 6.4 FLAT ZINC	F81053-1	4
3	SCREW, M6X16 -8.8 HEX SOCKET HEAD CAP ZI	F81001-21	4
-	CUTTER COVER	569008	1
4	PIVOT	569007-1	1
5	BUSHING, MOUNTING	569011-1	1
6	COVER, MOVABLE	568419	1
7	SPRING, TENSION	569012	1
8	BUSHING, SLIDE IGUS: JFM_1416_12_1	569013	1
9	WASHER, 13 FLAT ZINC	F81056-1	1
10	NUT, M12-8 HEX NYLON ZINC LOCK	F81034-2	1
11	SCREW, M6X25 -8.8-HEX SOCKET HEAD CAP ZI	F81001-41	3
12	BUSHING, DISTANCE	570020-1	1
13	WASHER, 6.5 SPECIAL FLAT ZINC-PL.	F81053-11	1
14	SCREW, M6X16 -8.8 HEX SOCKET HEAD CAP ZI	F81001-21	1
15	CHAIN TENSIONER PLATE	537711-1	1

¹ American version only

3.9 Electrical Box (Part No. 537670)

537670_001
537670_MANUAL



REF.	DESCRIPTION (* indicates parts available in assemblies only)	PART #	QTY
-	BOX, MP180H ELECTRICAL - COMPLETE	537670 ¹	1
-	BOX, MP180B ELECTRICAL - COMPLETE	537670-2 ²	1
-	BOX, MP180EB3S-V ELECTRICAL - COMPLETE	537670-6 ³	1
	BOX, ELECTRIC - COMPLETE MP180 AU	537670-6U ⁴	1
	BOX, ELECTRIC - COMPLETE MP180 BU	537670-2U ⁵	1
1	BOX, MP 200 ELECTRICAL	533149	1
2	SWITCH SIRCO M1 3P 40A 22003004	535522	1
3	LIGHT, LPM LB7 WHITE CONTROL	536919	1
4	GLAND, DP16/H CABLE	F81096-7	1
5	GLAND, DW11/H CABLE	085388	3
6	DECAL, ELECTRICAL BOX	537676	1
7	BUTTON, LPCB6644 EMERGENCY STOP	535445-K	1
8	BUTTON, LPCBL1117 COMPLETE	535441-K	3
9	BUTTON, LPCB2102 COMPLETE	535437-K	1
10	NUT, M20X1.5 SPLIT CABLE GLAND	F81096-22	1
11	GLAND, QVT20 M20 GREY SPLIT CABLE	F81096-20	1
12	MODULE, QT2/5.5 GROMMET	F81096-25	1

¹ Optional power supply kit (cable with plug) - 539809-1

² Optional power supply kit (cable with plug) - 539809-2

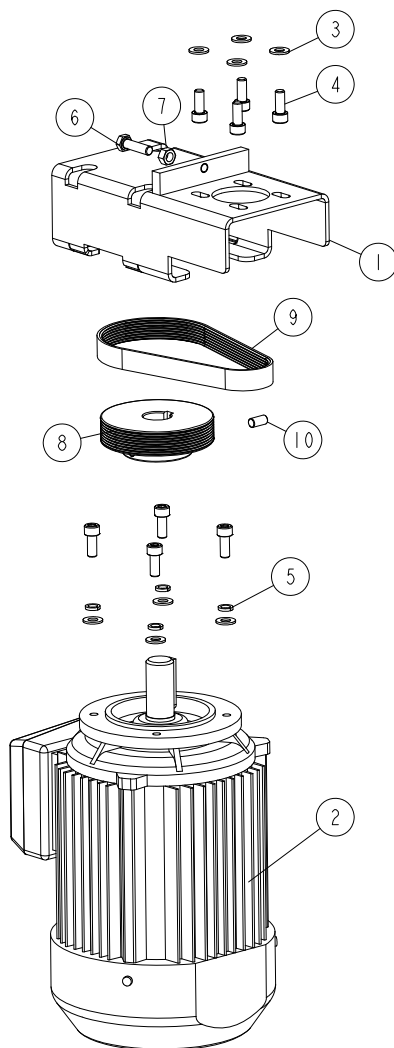
³ Optional power supply kit (cable with plug) - 539809

⁴ American version only

⁵ American version only

3.10 Side Cutter Drive 533647

533647_001_B
533647_MANUAL



Ref.	DESCRIPTION (* indicates parts available in assemblies only)	PART #	QTY
-	SIDE CUTTER DRIVE	533647	1
	SIDE CUTTER DRIVE 230V UL	533647-6U ¹	1
	SIDE CUTTER DRIVE UL	533647-U ²	1
1	PLATE WELDMENT, MP200 MOTOR PAINTED MOUNT	533649-1	1
2	MOTOR 3SIEK90L2A, B14/C140, 3KW, 2900 R.P.M, 50HZ	537385 ³	1
	MOTOR, SELHR90-2M2 IMB34/2 2,7KW 230V UL	533651-UL ⁴	1
	MOTOR, INDUKTA 3SIEK90L2A 3KW IMV19 UL	537385-UL ⁵	1
3	WASHER 8,4 ZC DIN 126 ISO 7091	F81054-1	8
4	SCREW M8X20 SHCS ZC 8.8 DIN 912 ISO 4762	F81002-30	8
5	WASHER 8,2 ZC SPRING LOCK DIN 127	F81054-4	4
6	BOLT M8X30 HH ZC FT 8.8 DIN 933	F81002-7	1
7	NUT M8 ZC 8 DIN 934	F81032-1	1
8	PULLEY, MULTI-GROOVE ALUMINIUM	533585	1
9	BELT, 8 PJ 457 MULTI-RIBBED	533680	1

Ref.	DESCRIPTION (* indicates parts available in assemblies only)	PART #	QTY	
10	SCREW M8X16 HSS W/FLAT POINT ZC 45H DIN	F81002-124	1	

¹ American version only

² American version only

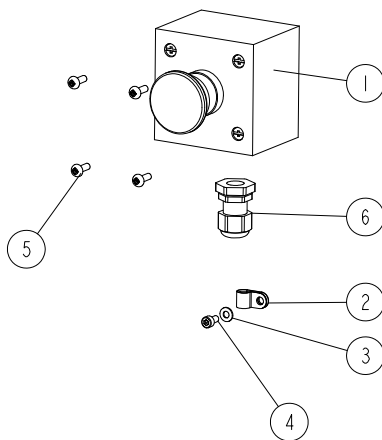
³ For other voltage version see motor's specification in the operation manual.

⁴ Included in 533647-6U

⁵ Included in 537385-UL

3.11 Emergency stop switch assembly 535669

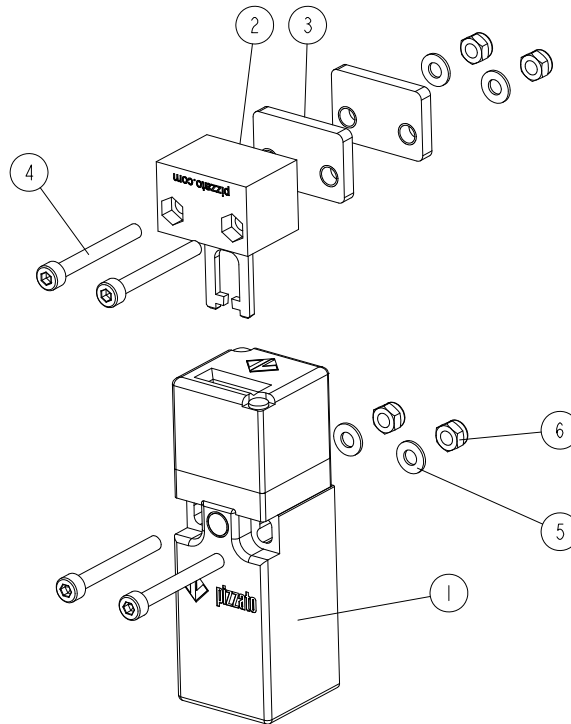
535669_001_A
535669_MANUAL



REF.	DESCRIPTION (* indicates parts available in assemblies only)	PART #	QTY
-	SWITCH ASSEMBLY, MP160 EMERGENCY STOP	535669	1
1	SWITCH, LPZ P1 B5 03 EMERGENCY STOP	536158	1
2	ELEMENT, EE63 MOUNTING	F81080-4	3
3	WASHER, 4.3 FLAT ZINC	F81051-2	3
4	SCREW, M4X8 8.8 HEX SOCKET HEAD CAP ZINC	F81011-36	3
5	SCREW, M4X12 -5,8-B CROSS RECESSED PAN HEAD ZINC	F81011-43	4
6	GLAND, DP 9/H CABLE	F81096-2	1

3.12 Safety switch assembly 537708

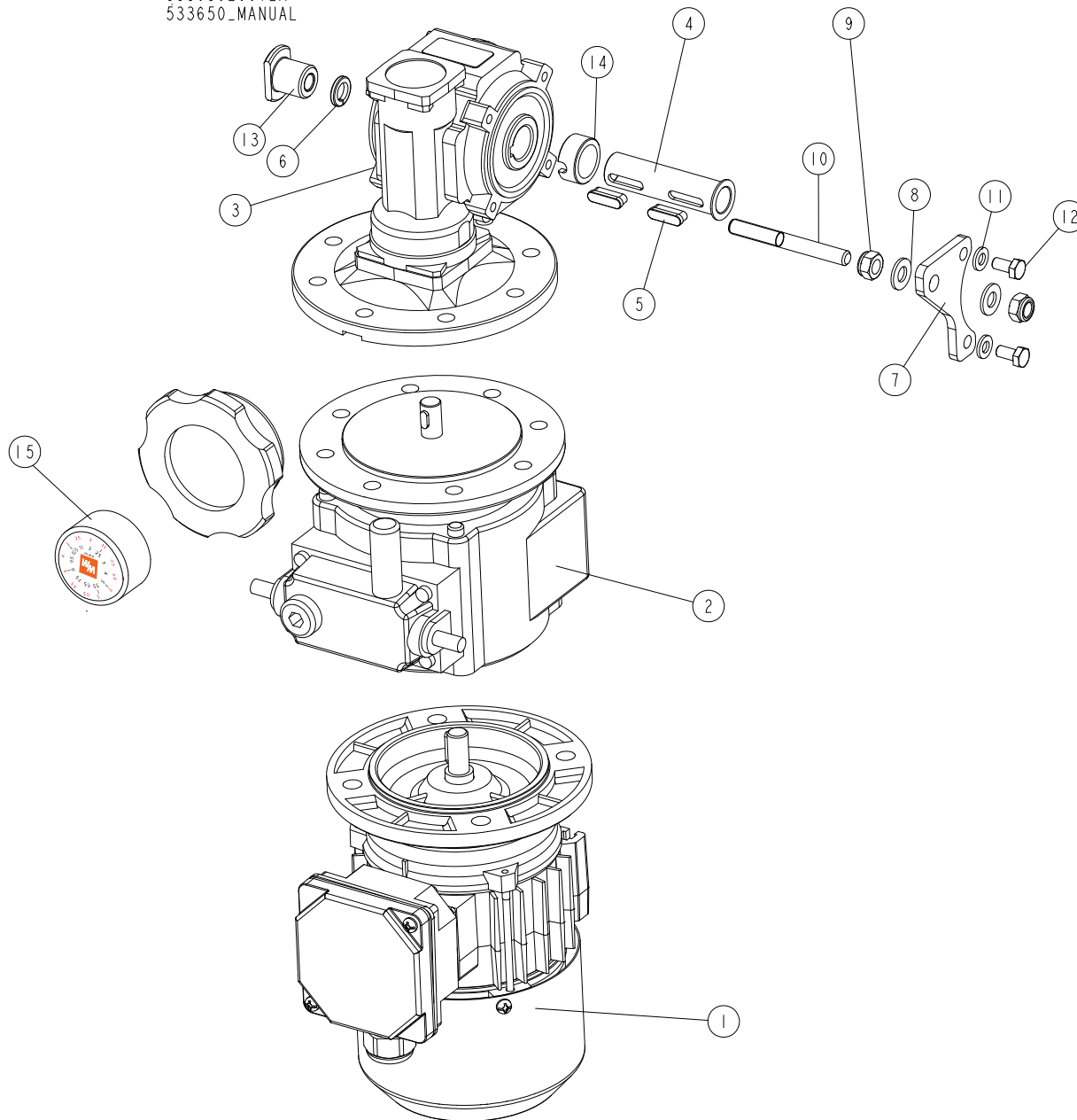
537708_001
537708_MANUAL



Ref	DESCRIPTION (* indicates parts available in assemblies only)	PART #	QTY
-	SAFETY SWITCH ASSEMBLY	537708	1
1	SAFETY SWITCH FR 693-M2	537623	1
2	KEY- VF KEYD3	537622	1
3	PLATE	537621-1	2
4	BOLT M4X35 SHCS ZC PT 8.8 DIN 912 ISO 4762	F81011-34	4
5	WASHER 4,3 ZC DIN 126 ISO 7091	F81051-2	4
6	NUT M4 ZC 8 NYLOCK DIN 982 ISO 7040	F81029-1	4

3.13 PRO Feed drive 533650

533650_001_A
533650_MANUAL



REF.	DESCRIPTION (* indicates parts available in assemblies only)	PART #	QTY
-	DRIVE, PRO FEED	533650	1
-	DRIVE, MP160 PRO FEED	533650-160	1
-	DRIVE, MP180 PRO FEED	533650-180	1
	PRO MOTION DRIVE F/B MP180 AU	533650-180AU ¹	1
	PRO MOTION DRIVE F/B MP180 UL	533650-180U ²	1
	REDUCER, PRO KC40/P15+NF003+SKH63-2C	533640	1
1	MOTOR SKH63-B (0.37 KW; 2800 REV/MIN)	533642 ³	1
1	MOTOR, SEMKH71-2C/X+NF005 160/14+KC40/P	532807-UL ⁴	1
1	MOTOREDUCER KC40/P 15+ NF003 + SKH63-2	533640-UL ⁵	1

REF.	DESCRIPTION (* indicates parts available in assemblies only)	PART #	QTY	
2	SPEED VARIATOR NF003 140/11 V3	533643	1	
3	REDUCER KC40 P15 63 B5 V6 H18 3D	533641	1	
4	BUSHING, REDUCER	533731	1	
5	KEY	533732	2	
6	WASHER, Z 10.2 SPLIT LOCK ZINC	F81055-2	1	
7	ARM, TORQUE	533734-1	1	
8	WASHER, 8.4 FLAT ZINC	F81054-1	2	
9	NUT, M8-8-B HEX NYLON ZINC LOCK	F81032-2	2	
10	BOLT, M8	533635-1-6U	1	
11	WASHER, 6.4 FLAT ZINC	F81053-1	2	
12	BOLT, M6X12 8.8 HEX HEAD FULL THREAD ZINC	F81001-7	2	
13	NUT, M10	533733-1-6U	1	
14	BUSHING, REDUCER	541449 ⁶	1	
15	INDICATOR, POSITION (GRAVITY DRIVE)	546883	1	

¹ American version only

² American version only

³ For other voltage version see motor's specification in the operation manual.

⁴ Included in 533650-180AU

⁵ Included in 533650-180U

⁶ Not Included In 533650-160